



Role of PSMA-ligands imaging in Renal Cell Carcinoma management: current status and future perspectives

Luca Urso^{1,2} · Angelo Castello³ · Giovanni Christian Rocca⁴ · Federica Lancia⁵ · Stefano Panareo⁶ · Corrado Cittanti^{1,2}  · Licia Uccelli^{1,2} · Luigia Florimonte³ · Massimo Castellani³ · Carmelo Ippolito⁴ · Antonio Frassoldati⁵ · Mirco Bartolomei²

Received: 19 January 2022 / Accepted: 14 February 2022
© The Author(s) 2022

Abstract

Background Renal masses detection is continually increasing worldwide, with Renal Cell Carcinoma (RCC) accounting for approximately 90% of all renal cancers and remaining one of the most aggressive urological malignancies. Despite improvements in cancer management, accurate diagnosis and treatment strategy of RCC by computed tomography (CT) and magnetic resonance imaging (MRI) are still challenging. Prostate-Specific Membrane Antigen (PSMA) is known to be highly expressed on the endothelial cells of the neovasculature of several solid tumors other than prostate cancer, including RCC. In this context, recent preliminary studies reported a promising role for positron emission tomography (PET)/CT with radiolabeled molecules targeting PSMA, in alternative to fluorodeoxyglucose (FDG) in RCC patients.

Purpose The aim of our review is to provide an updated overview of current evidences and major limitations regarding the use of PSMA PET/CT in RCC.

Methods A literature search, up to 31 December 2021, was performed using the following electronic databases: PubMed, SCOPUS, Web of Science, and Google Scholar.

Results The findings of this review suggest that PSMA PET/CT could represent a valid imaging option for diagnosis, staging, and therapy response evaluation in RCC, particularly in clear cell RCC.

Conclusions Further studies are needed for this “relatively” new imaging modality to consolidate its indications, timing, and practical procedures.

Keywords Renal Cell Carcinoma · Prostate-specific membrane antigen · Positron emission tomography · PSMA PET/CT · Clear cell Renal Cell Carcinoma · Renal neoplasms

Luca Urso and Angelo Castello have contributed equally to this work.

✉ Corrado Cittanti
ctc@unife.it

- ¹ Department of Translational Medicine, University of Ferrara, Via Aldo Moro 8, 44124 Ferrara, Italy
- ² Nuclear Medicine Unit, Oncological Medical and Specialists Department, University Hospital of Ferrara, Ferrara, Italy
- ³ Department of Nuclear Medicine, Fondazione IRCCS Ca' Granda, Ospedale Maggiore Policlinico, Milan, Italy
- ⁴ Urology Unit, Surgical Department, University Hospital of Ferrara, Ferrara, Italy
- ⁵ Oncological Medical and Specialists Department, Oncology Unit, University Hospital of Ferrara, Ferrara, Italy
- ⁶ Nuclear Medicine Unit, Oncology and Haematology Department, University Hospital of Modena, Modena, Italy

Introduction

Renal Cell Carcinoma (RCC) is the most common type of renal malignancy, with a worldwide incidence of approximately 400,000 cases per year (Bray et al. 2018; Ahn et al. 2019). In the last 50 years, a progressive increase of RCC diagnosis has been observed, in relation to the exposure to “modern” risk factors (e.g., obesity and alcohol consumption) and to the increased detection by new imaging modalities (Padala et al. 2020; Tung and Sahu 2021). Indeed, kidneys are one of the most frequent sites of incidental findings, of which a non-negligible percentage is diagnosed as malignancies few years later (O'Connor et al. 2012; Ballard and Guzman 2021).

RCC includes two main subtypes, namely clear cell RCC (ccRCC) and non-clear cell RCC (nccRCC), with this latter

comprehending a minimum of 15 histotypes, including papillary (pRCC) and chromophobe (chrRCC) (Tung and Sahu 2021). ccRCC, pRCC and chrRCC, respectively, account for 75–80%, 10–15% and 5% of all RCC (Evangelista et al. 2020). As reported by several literature evidences, 20–30% of RCC present with metastatic disease at diagnosis, with a correlated poor prognosis of approximately 10–20% survival rate at 5-year (Ljungberg et al. 2011; Dabestani et al. 2016; Ahn et al. 2019; Tung and Sahu 2021). Currently, partial or radical nephrectomy remains the mainstay of treatment for renal malignancies (Liu 2016).

Imaging modalities of first choice for the characterization of primary RCC are contrast-enhanced computed tomography (ceCT) and magnetic resonance imaging (MRI). On the contrary, [^{18}F]-Fluorodeoxyglucose (FDG) Positron Emission Tomography/Computed Tomography (PET/CT) has a limited role in primary RCC evaluation. This is due to the physiological renal excretion of FDG and the expression of different enzymes across RCC subtypes. In particular, the expression of fructose 1,6-bisphosphatase 1, a key enzyme in the gluconeogenesis pathway, appears to be inversely correlated with FDG avidity in ccRCC, resulting with FDG images characterized by low tumor-to-background ratio (Aide et al. 2003; Liu 2016; Chen et al. 2019; Pozzessere et al. 2019).

In the metastatic disease, evaluation by ceCT represents the gold standard imaging modality, while FDG PET/CT is carving out a role in case of inconclusive radiological findings and for treatment surveillance (Aide et al. 2003; Pozzessere et al. 2019). However, several studies reported a potential advantage for FDG PET/CT in comparison to the conventional imaging in RCC restaging, in particular for the detection of early metastatic disease and musculoskeletal metastases, although lesions' size and low tumor grade can be associated with false-negative results (Park et al. 2009; Wang et al. 2012; Bertagna et al. 2013; Alongi et al. 2015; Liu 2016).

Due to the above-mentioned FDG PET/CT limits, there is a raising interest for the identification of new PET radiotracers able to study RCC. For example, mutations in von Hippel–Lindau (VHL) gene play a primary role in ccRCC pathogenesis, determining a reduction of Hypoxia-inducible factors (HIF) degradation and simulating a hypoxic state (pseudohypoxia). As a result, HIF accumulates and translocates into the cell nucleus where it promotes the transcription of neoangiogenic and growth factors (Chachami et al. 2009; Frew and Moch 2015; Wohlrab et al. 2018; Lopez et al. 2020). This molecular pathway has leading to the discover of hypoxia-related radiotracers, such as [^{18}F]-Fluoromisonidazole (FMISO) and [^{18}F]-Fluoroazomycin Arabinoside (FAZA) (Carlin et al. 2014). However, these radiotracers did not meet the expectations in RCC. For example, a recent study by Capitanio

et al. (Capitanio et al. 2021) assessed the possible role of FAZA PET/CT in the identification of lymph-node metastases in RCC. Nevertheless, no nodal metastasis showed positive FAZA uptake, suggesting that VHL-induced pseudohypoxia phenomenon in RCC is not feasible to be studied with hypoxia-related radiotracers, as it does not represent a real hypoxic state.

Moreover, in the recent years, PET/CT using prostate-specific membrane antigen (PSMA), labeled with ^{68}Ga or ^{18}F , has revolutionized the imaging of prostate cancer. In fact, PSMA is a transmembrane glycoprotein significantly overexpressed on the epithelial cells of prostate cancers, particularly in those with aggressive biology, high Gleason score, and advanced stages (Bravaccini et al. 2018; Ahn et al. 2019). However, PSMA is also overexpressed on the endothelial cells of the neovasculature of several other solid tumors, including RCC, paving the way to evaluate a possible role of PSMA PET/CT beyond the conventional application in prostate cancer (Chang et al. 2001; Baccala et al. 2007; Demirci et al. 2014; Siva et al. 2020).

In this narrative review, we summarize the current evidences regarding PSMA PET/CT in RCC, highlighting both the usefulness and the limits, and drawing possible future perspectives.

Methods

A literature search was performed using the following electronic databases: PubMed, SCOPUS, Web of Science, and Google Scholar. The last search was run on 31 December 2021. The following keywords were used: “Renal Cell Carcinoma” AND “PSMA PET/CT”, and “renal cancer” AND “PSMA PET/CT”. Only articles in English were selected. Case reports, letters to the editor, and original articles were also included. The references of each article were checked to retrieve any additional paper meeting the inclusion criteria.

PSMA-ligands imaging

During the last decade, PSMA-ligand PET/CT widespread as a reliable tool in prostate cancer (Ozgül Ekmekcioglu et al. 2019). Several PSMA-ligands have been evaluated over time, labeled with different radionuclides, mainly ^{68}Ga and ^{18}F .

[^{68}Ga]-PSMA11 is one of the most used radiotracers and the most evaluated in available literature data regarding RCC. It binds to the extracellular domain of the PSMA receptor, being consequently internalized into the cell. Due to its high receptor affinity and to its low molecular weight, [^{68}Ga]-PSMA11 demonstrates an excellent tissue penetration into solid lesions, including bone metastases (Afshar-Oromieh et al. 2016). [^{68}Ga]-labeled PSMA-ligands are

administered intravenously with a recommended activity of 2 MBq/Kg of body weight (Schwarzenboeck et al. 2017). Image acquisition is recommended 1 h after injection, even though some reports described an increased tumor-to-background ratio (TBR) 3 h after injection (Afshar-Oromieh et al. 2016; Schwarzenboeck et al. 2017). PSMA is physiologically expressed in several tissues, such as lacrimal and salivary glands, kidneys, liver and spleen, bowel and bladder (Fig. 1A–D).

^{18}F -labeled radiotracers addressing PSMA have a great relevance today, with ^{18}F -PSMA-1007 and ^{18}F -DCFPyL recently evaluated also in RCC (Chen et al. 2011; Foley et al. 2020). Indeed, ^{18}F has cyclotron production and longer half-life in comparison to ^{68}Ga (110 vs. 68 min, respectively), and may therefore allow to ship the radiotracer to a greater number of Nuclear Medicine centers and to perform more daily exams (Foley et al. 2020). Moreover, literature evidences report that ^{18}F -labeled radiotracers addressing PSMA have a lower urinary clearance within the first 2 h after injection in comparison to ^{68}Ga ones (Schwarzenboeck et al. 2017). In particular, ^{18}F -labeled radiotracers addressing PSMA are eliminated by the liver and this characteristic may potentially increase the TBR for evaluating renal masses (Giesel et al. 2018; Foley et al. 2020) (Fig. 1E–H). As for ^{68}Ga -PSMA11, ^{18}F -based-PSMA radiotracers' imaging acquisition is recommended 1 h after 200–250 MBq intravenous injection, with a possible late scan 2–3 h after injection to optimize image interpretation (Chen et al. 2011; Giesel et al. 2018; Foley et al. 2020).

PSMA PET/CT in RCC diagnosis and staging

Despite an increasing interest in PSMA PET/CT in patients with RCC, the current literature still lacks robust evidence in this context, being confined mainly to single case reports and few reviews (Van De Wiele et al. 2019; Evangelista et al. 2020; Uijen et al. 2021). Moreover, prospective studies are

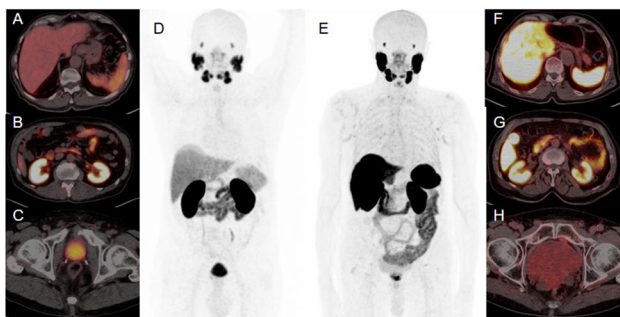


Fig. 1 Physiological distribution of ^{68}Ga -PSMA11 PET/CT (A–D) and ^{18}F -PSMA-1007 PET/CT (E–H). ^{18}F -PSMA-1007 has a lower urinary clearance in comparison to ^{68}Ga -PSMA11 (C vs. H), but a higher hepatic elimination (A vs. F)

rare; therefore, drawing some generalized conclusions is premature. Current evidences are listed in Table 1.

One of the main limitations for clinical use of PSMA PET/CT in non-metastatic ccRCC is related to the high tracer uptake of normal kidney parenchyma owing to physiological expression in the proximal convoluted tubules and renal excretion of the radiotracer (Siva et al. 2020), although this latter aspect could be overcome with ^{18}F -PSMA radiotracers, which have biliary excretion rather than urinary clearance as ^{68}Ga -PSMA (Giesel et al. 2016; Pianou et al. 2019; Siva et al. 2020). Indeed, in a recent case report, Marafi et al. (Marafi et al. 2020) showed an intense ^{18}F -PSMA concentration in a renal mass, which was proven to be a grade 3 ccRCC. On the other hand, a previous pilot study on the role of ^{68}Ga -PSMA PET/CT in the initial staging demonstrated not significant radiotracer uptake in the primary renal lesions with a mean of TBR-SUVmax of only 0.2 ± 0.3 due to high uptake in the surrounding renal parenchyma (Sawicki et al. 2017). In a recent retrospective study by Raveenthiran and colleagues (Raveenthiran et al. 2019), ^{68}Ga -PSMA PET/CT imaging performed in patients with various RCC histotypes (8 ccRCC, 6 unknown, 1 pRCC, and 1 oncocytoma) showed metastases not identified by standard CT scans in 2 patients. Moreover, PSMA PET/CT did not demonstrate significant uptake in regional lymph nodes of 6 patients that were considered pathologic by standard CT, and identified new synchronous primaries in three cases. Furthermore, patient management was changed in 7 out of 16 RCC patients (43.8%) who performed ^{68}Ga -PSMA/CT for primary staging with respect to the initial stage according to CT features. In addition, Siva et al. (Siva et al. 2017) compared the diagnostic performance of ^{68}Ga -PSMA PET/CT with the conventional CT and FDG PET/CT in a small cohort of 8 RCC patients (7 ccRCC and 1 pRCC). In particular, ^{68}Ga -PSMA and FDG PET findings were concordant in 6 out of 8 patients, although ^{68}Ga -PSMA showed higher uptake in two additional lesions that changed patient's management from stereotactic radiotherapy to systemic chemotherapy. Likewise, ^{68}Ga -PSMA and FDG PET/CT were mostly concordant for evaluation of primary tumor and metastatic disease in another study with 11 RCC patients (Tariq et al. 2021). Furthermore, dual tracer PET/CT outperformed the conventional imaging in 5 out of 11 patients (45%), detecting more lesions in 2 patients and refuting positive lesions with conventional imaging in another 3 patients. FDG uptake better characterized renal vein thrombus compared to ^{68}Ga -PSMA as also showed in a recent case report, suggesting that friable tumor thrombus with minimal neovasculature may be imaged better with FDG (Saadat et al. 2018).

As we have observed from above-mentioned studies, PSMA PET might have a role in the assessment of lymph-node status and in the detection of occult metastases.

Table 1 Summary of PSMA PET/CT studies in RCC patients

Authors	Num-ber of patients	PSMA-ligand	Study type	Setting	Histology	Comments
Marafi et al. (2020)	1	¹⁸ F-PSMA-1007	Case report	Staging	ccRCC	¹⁸ F-PSMA-1007 PET/CT showed intense of primary renal tumor and bilateral lung nodules
Sawicki et al. (2017)	6	⁶⁸ Ga-PSMA-11	Retrospective	Staging	4 ccRCC, 1 pRCC, 1 chrRCC	5/6 primary RCC showed PSMA uptake but TBR-SUV _{max} was low. 8/16 metastases were PSMA positive with a high MBR-SUV _{max} . All PSMA negative metastasis were subcentimetric lung nodules
Raveenthiran et al. (2019)	38	⁶⁸ Ga-PSMA-11	Retrospective	Staging and Restaging	Staging: 8 ccRCC, 1 pRCC, 1 oncocytoma, 6 unknown; Restaging: 20 ccRCC, 1 chrRCC, 1 transitional cell carcinoma	Staging: 16 patients enrolled. 75% showed primary avid lesions. Management was changed for the 43.8%. PSMA PET/CT and ceCT agreed only in the 37.5%. Restaging: 22 patients enrolled. Management was changed in 40.9%. PSMA PET/CT and ceCT agreed only in the 36.4%. Management was changed due to the identification of new sites of suspected metastasis and/or detection of synchronous primaries
Siva et al. (2017)	8	⁶⁸ Ga-PSMA-11, ¹⁸ F-FDG	Retrospective	Staging and therapy response evaluation	7 ccRCC, 1 pRCC	PSMA uptake is typically more intense than FDG in RCC. The 2 radiotracers are concordant for detection of sites of disease except in 2 cases (1 of which was papillary carcinoma). ¹⁸ F-FDG PET demonstrated a more rapid response to treatment, but both PET/CT demonstrated responses earlier than the conventional imaging
Tariq et al. (2021)	11	⁶⁸ Ga-PSMA-11, ¹⁸ F-FDG	Retrospective	Staging and Restaging	10 ccRCC, 1 unclassified	For primary tumor assessment, ⁶⁸ Ga-PSMA-11 and ¹⁸ F-FDG were concordant in 2 patients, and discordant in 3. For metastatic disease, dual tracers were concordant in 9/11 patients. In 3 patients, change was determined a change in clinical management

Table 1 (continued)

Authors	Num-ber of patients	PSMA-ligand	Study type	Setting	Histology	Comments
Saadat et al. (2018)	1	Not reported	Case report	Staging mRCC	ccRCC	¹⁸ F-FDG seems superior to PSMA PET/CT in detecting RCC associated tumor thrombus
Rhee et al. (2016)	10	⁶⁸ Ga-PSMA-11	Prospective	Staging	8 ccRCC, 1 pRCC, 1 unclassified RCC	PSMA PET/CT detected multiple histologically proven RCC metastases undetected by ceCT, changing patient's management
Gao et al. (2020)	36	⁶⁸ Ga-PSMA-11	Retrospective	Pre-operative	ccRCC	SUVmax could differentiate WHO/ISUP grade (3–4 vs. 1–2), pT stage and adverse pathology (benign vs. malign) with a cut-off value of 16.4
Golan et al. (2021)	27	⁶⁸ Ga-PSMA-11	Prospective	Pre-operative	18 ccRCC, 4 pRCC, 2 chrRCC, 2 Oncocytoma, 2 Angiomyolipoma, 1 Mixed Epithelial and Stromal Tumor	29 renal masses were evaluated. Malignant masses (24/29) had median SUVmean and SUVmax significantly higher than benign, a lower wash-out coefficient (K2) and were associated with a positive PSMA staining (20/24)
Rowe et al. (2015)	5	¹⁸ F-DCFPyL	Prospective	Recurrence	ccRCC	Sites of putative metastatic disease were readily identifiable by abnormal ¹⁸ F-PSMA uptake in each of the 5 patients studied, with overall more lesions detected than on the conventional imaging
Yin et al. (2019)	8	¹⁸ F-DCFPyL	Prospective	Staging/Restaging	nccRCC: 3 pRCC, 2 chrRCC, 2 unclassified RCC, 1 Xp11 translocation RCC	PSMA PET/CT seems not appropriate to image nccRCC
Meyer et al. (2019)	14	¹⁸ F-DCFPyL	Prospective	Restaging	ccRCC	17/21 (81.0%) metastatic lesions detected on the conventional imaging had radiotracer uptake. 3/3 primary ccRCC had PSMA uptake. In 4 (28.6%) patients, 12 more lesions were identified on PSMA PET/CT than the conventional imaging and 3 of those were no longer considered oligometastatic

Table 1 (continued)

Authors	Num-ber of patients	PSMA-ligand	Study type	Setting	Histology	Comments
Guhne et al. (2021)	9	⁶⁸ Ga-PSMA-11	Retrospective	Recurrency	ccRCC	Among 12 PSMA-positive lesions evaluated, 11 were ccRCC metastases and 1 prostate carcinoma at histology. Molecular PSMA expression was detected in all lesions, but intensity and distribution did not correlate with PET parameters (particularly in small lung nodules) Highly diverging results emerged between PSMA PET/CT and ceCT therapy response evaluation. PSMA PET/CT might allow more precise response assessment to systematic treatment especially for patients showing SD at ceCT
Mittlmeier et al. (2021)	11	¹⁸ F-PSMA-1007	Prospective	Therapy response evaluation	ccRCC	⁶⁸ Ga-PSMA-PET is a promising imaging for early prediction of response to systemic treatment in ccRCC
Seront et al. (2021)	2	⁶⁸ Ga-PSMA-11	Retrospective	Therapy response evaluation	ccRCC	

18F-FDG, ¹⁸F-Fluorodeoxyglucose, *ccRCC* clear cell Renal Cell Carcinoma, *ceCT* contrast-enhanced computed tomography, *chrRCC* chromophobe Renal Cell Carcinoma, *MBR* metastasis-to-background, *mRCC* metastatic Renal Cell Carcinoma, *nccRCC* non-clear cell Renal Cell Carcinoma, *PET/CT* positron emission tomography/computed tomography, *pRCC* papillary Renal Cell Carcinoma, *PSMA* prostate-specific membrane antigen, *RCC* Renal Cell Carcinoma, *SD* stable disease, *TBR* tumor-to-background ratio

Similarly, Rhee and colleagues (Rhee et al. 2016) demonstrated the superiority of [^{68}Ga]-PSMA PET/CT able to depict 4/10 regional lymph nodes compared to only 2 classified as metastatic by ceCT. Overall, PSMA PET reported a sensitivity of 92% vs. 67% of ceCT scan with a positive likelihood ratio of 35 and 3, respectively.

More recently, Gao et al. (Gao et al. 2020) investigated the role of [^{68}Ga]-PSMA PET/CT for characterizing pathological features of primary tumors in a cohort of 36 ccRCC patients who underwent surgery. SUVmax was significantly different according to histologic grade, pT stage, and adverse pathology (tumor necrosis or sarcomatoid or rhabdoid feature), while Hounsfield values did not show any significant difference. Of note, SUVmax could effectively differentiate WHO/ISUP grade (3–4 vs. 1–2) and adverse pathology (positive vs. negative), with AUC 0.89 (95% CI, 0.81–0.98, $p < 0.001$), cut-off 16.4, sensitivity 100%, and specificity 71% and AUC 0.92 (95% CI, 0.85–0.99, $p < 0.001$), cut-off 18.5, sensitivity 94%, and specificity 87%, respectively. Interestingly, another recent study by Golan and colleagues (Golan et al. 2021) evaluated the diagnostic performance of dynamic [^{68}Ga]-PSMA PET/CT in a prospective case series of patients with primary renal mass (18 ccRCC, 4 pRCC, 2 chrRCC, and 5 benign lesions). In their study, the median SUVmean and SUVmax were significantly different between benign and malignant lesions (2.3 vs. 6.8 for SUVmean, respectively, $p < 0.01$; 3.8 vs. 9.4 for SUVmax, respectively, $p < 0.01$). Likewise, the median wash-out coefficient (K2) was significantly lower in malignant lesions than in benign lesions (0.17 vs. 0.70, $p = 0.02$). Increased [^{68}Ga]-PSMA tracer uptake and intratumoral retention correlated with PSMA expression in malignant renal tumors compared with benign renal masses, supporting further assessment of dynamic PSMA as a potential tool for evaluating localized renal masses.

Despite growing interest in the clinical use of PSMA PET imaging for improved detection of RCC lesions, some limitations should be mentioned. In particular, small liver lesions below the resolution power of PET/CT (5 mm) as well as small lung metastases, due to free-breathing PET/CT acquisitions, might be overlooked (Ljungberg et al. 2011; O'Connor et al. 2012). However, novel technical improvements might overcome such limitations.

PSMA PET/CT in RCC recurrence and therapy response evaluation

A few more experiences have been reported in literature regarding the use of PSMA PET for restaging RCC. The first study was reported in 2015 by Rowe et al. (Rowe et al. 2015), who prospectively imaged 5 patients with metastatic ccRCC (mccRCC), comparing [^{18}F]-PSMA PET/CT with either ceCT or MRI. Overall, 28 out of 29 lesions were

detected by PET/CT, while only 18 were described on conventional imaging. The only lesion that did not show uptake on PSMA PET/CT was a small (6 mm) hepatic lesion, probably undetectable both due to the small size and to the physiological hepatic uptake. On the contrary, the majority of the lesions detected on PSMA PET/CT, but not on conventional imaging, were small mediastinum and retroperitoneum lymph nodes, but also pancreatic, lung, bone and brain metastasis, as well as uncommon sites of disease (paraspinal musculature and subcutaneous soft tissues). SUVmax of detected lesions ranged between 1.6 and 19.3.

In 2017, Siva et al. (Siva et al. 2017) performed a direct comparison between FDG PET and [^{68}Ga]-PSMA PET/CT in a cohort of 8 patients with oligometastatic RCC (7 ccRCC and 1 pRCC) before and after treatment, i.e., surgery or stereotactic ablative body radiation. Despite detecting the same sites of disease in 6 patients, PSMA avidity resulted higher than FDG (mean SUVmax 11.4 [5.3–26.5] and 4.4 [3.1–7.0], respectively). However, the two radiotracers showed different response to radiotherapy, with FDG treatment-induced changes coming faster (3–4 months) than on PSMA PET/CT (6–12 months).

The first experience with PSMA PET/CT in nccRCC was published by Yin and colleagues in 2019 (Yin et al. 2019). In their prospective study, the authors imaged 8 patients with metastatic nccRCC (3 pRCC, 2 chrRCC, 1 Xp11 translocation RCC, and 2 unclassified) by [^{18}F]-PSMA PET/CT and using either ceCT or MRI as standard of reference. Overall, 10/73 metastatic lesions demonstrated PSMA uptake, while 14 had an equivocal uptake and 49 were defined as non-PSMA avid. In 3 cases, the primary renal tumor was in place, but none of them showed significant PSMA uptake. Therefore, these results suggested that PSMA PET/CT was not appropriate to image nccRCC.

Again, using [^{18}F]-PSMA PET/CT, Meyer et al. (Meyer et al. 2019) analysed 14 patients with oligometastatic ccRCC (<3 lesions on conventional imaging). PET/CT scan detected all 3 renal primary tumors and 29 metastatic localizations, whereas 21 were reported on conventional imaging, represented by CT or MRI. As a consequence, 3 patients were no longer considered oligometastatic after PSMA PET/CT. Only 4 lesions detected on conventional imaging did not show radiotracer uptake (2 retroperitoneal lymph nodes, 1 adrenal gland, and 1 mediastinum localization). The reported detection rates of PSMA PET/CT and conventional imaging were 88.9% and 66.7%, respectively.

Similarly, in 2019, Raveenthiran et al. (Raveenthiran et al. 2019) performed PSMA PET/CT for staging and restaging patients with RCC. Twenty-two out of 38 patients performed [^{68}Ga]-PSMA PET/CT for suspected RCC recurrency (20 ccRCC, 1 chrRCC, and 1 transitional cell carcinoma). PSMA PET/CT identified new disease localizations in 9 cases, refuted suspicious lesions in 7 cases, and changed clinical

management in 9 patients (40.9%). Moreover, 4 patients had a new synchronous primary neoplasm diagnosis compatible with prostate cancer. Only in 8/22 cases (36%), diagnostic CT and [⁶⁸Ga]-PSMA PET/CT were concordant. Although the study was retrospective and limited by the lack of consistent histological correlation, it suggests a possible utility for [⁶⁸Ga]-PSMA PET/CT in the management of RCC.

More recently, Guhne and colleagues (Gühne et al. 2021) correlated [⁶⁸Ga]-PSMA PET/CT uptake and histopathological findings in 9 patients with suspect metastatic recurrence of ccRCC. Eleven PSMA-positive lesions were confirmed as metastases from RCC, while 1 lesion resulted from prostate cancer. Median SUV_{max} and SUV_{mean} were 3.1 and 2.0, respectively, with lung metastases showing lower tracer uptakes in comparison to other localizations. No correlation was found between PSMA PET/CT uptake and microvasculature PSMA expression or tumor grade on histopathology.

The first evidence in therapy response assessment was reported by Mittlmeier et al. (2021) in 2021. Eleven patients with mcrRCC performed [¹⁸F]-PSMA PET/CT before starting Tyrosine Kinase Inhibitors (TKI) or Immune Checkpoints Inhibitors (ICI) and after 8 weeks of therapy. Despite all patients were PSMA positive at baseline, 3 patients showed a complete response, 3 a partial response, 4 a stable disease, and 1 a progressive disease at follow-up, according to a modified PERCIST response criteria (Seitz et al. 2018). On the contrary, patient's responses according to RECIST criteria were 0 complete responses, 1 partial response, 9 stable disease, and 1 progressive disease, respectively. Therefore, the authors concluded suggesting a potential role for [¹⁸F]-PSMA PET/CT in early therapy response assessment, in particular for patients showing SD at ceCT. Similarly, a recent case report confirmed the potential utility of PSMA PET/CT in the evaluation of response to TKI-ICI therapy in a mcrRCC patient (Seront et al. 2021).

Discussion and future perspectives

The main dilemma in front of incidental renal masses is to distinguish between benign vs. malignant lesions. Nevertheless, in several cases, CT and MRI are unable to reliably distinguish the nature of a renal mass, particularly between avidly enhancing malignant ccRCC and benign oncocytomas (Pierorazio et al. 2013; Pozzessere et al. 2019). As a consequence, a non-negligent percentage of indeterminate findings hesitates in over-treatment and, potentially, in avoidable nephrectomies (Rowe et al. 2017). In this context, the role of molecular imaging for the assessment of renal masses would be of great impact. While FDG PET/CT failed in this subset of patients (Özülker et al. 2011), promising results were reported using ^{99m}Tc-sestamibi SPECT/CT in a few experimental studies (Gormley et al. 1996; Hendrikse et al.

1998; Rowe et al. 2017). In particular, oncocytomas seem to have more mitochondrial content in comparison to ccRCC and may therefore show an increased ^{99m}Tc-sestamibi uptake. Anyhow, patients studied with ^{99m}Tc-sestamibi are a small number and some renal masses are reported to show an intermediate behaviour, in particular chrRCC. Moreover, this imaging is not in the current clinical practice and experimental protocol is needed. Although a relative low number of evidences regarding PSMA PET/CT in RCC are currently available, preliminary results are encouraging both for staging and response assessment, as well as for PSMA-targeted therapy. If preliminary results, such as the higher uptake and the different wash-out kinetics in tumors with more aggressive histologies or pT stage, were confirmed in larger prospective cohorts, PSMA PET/CT would open the way for its clinical routinely use to correctly identify the renal masses that really deserve surgical treatment (Gao et al. 2020; Golan et al. 2021). These papers on the role of molecular imaging with PSMA PET/CT strengthen previous clinico-pathological evidences, such as the study of Spatz et al. (Spatz et al. 2018). This study demonstrated an increased PSMA expression in ccRCC (82.5%) in comparison to other RCC subtypes, and reported higher endothelial PSMA expression in tumor vessels of higher grade and stage, and metastatic and lethal ccRCC. The same Authors also reported a stronger association between PSMA expression and overall survival in comparison to established clinical parameters, highlighting a prognostic relevance of PSMA expression in ccRCC. However, future clinical trials are necessary, to correlate PSMA PET/CT avidity with genetic and biologic tumor characteristics, as well as with radiomics features. The analysis of all these factors could potentially contribute to better stratify patients' disease, providing a powerful prognostic tool for the oncologists, at least in ccRCC and chrRCC, which seem to be the prevalent PSMA expressing RCC subtypes (Baccala et al. 2007; Spatz et al. 2018; Toyama et al. 2021). On the contrary, PSMA expression is reported to be typically low in pRCC (Baccala et al. 2007; Spatz et al. 2018; Yin et al. 2019), although pRCC is well imaged with FDG PET/CT (Hou et al. 2021).

In staging and restaging setting, ceCT is currently the gold standard, even though false negatives are common in case of small metastatic localizations (Ahn et al. 2019; Pozzessere et al. 2019). FDG PET/CT has demonstrated good sensitivity and specificity (respectively, 86% and 88%) in a meta-analysis by Ma et al. (Ma et al. 2017), despite RCC is not a typical "Warburg" tumor (Lindenberg et al. 2019). Few papers have recently compared FDG and PSMA PET/CT in staging RCC. PSMA-avid lesions seem to show higher uptake compared to those FDG-avid, even though vein thrombus seem to be better detectable on FDG PET/CT (Siva et al. 2017; Saadat et al. 2018). PSMA PET/CT looks particularly promising in detecting oligometastatic disease,

in particular small retroperitoneal lymph nodes, which do not reach CT dimensional criteria for disease localizations, changing the therapeutic decision in a non-negligible percentage of patients (Rowe et al. 2015; Rhee et al. 2016; Raveenthiran et al. 2019). Therefore, patients with locally advanced RCC, particularly ccRCC, and uncertain conventional imaging findings could ideally benefit of PSMA PET/CT to better stage their disease and to decide the best treatment option available. Table 2 illustrates ongoing clinical trials with PSMA PET/CT in patients with RCC. Among the reported studies, it is of particular interest a prospective single centre trial (NCT04987086), that is currently recruiting 300 patients for staging locally advanced RCC with [⁶⁸Ga]-PSMA PET/CT, with results available in a couple of years.

In patients with metastatic disease, PSMA PET/CT has demonstrated a very high detection rate (Rowe et al. 2015; Meyer et al. 2019; Raveenthiran et al. 2019; Gühne et al. 2021). In this subset of patients, a possible future role for PSMA imaging may be in the therapy response evaluation. In oligometastatic disease, stereotactic ablative body radiation is a valid therapeutic option, but preliminary evidences report a slower response on PSMA PET/CT when compared to that detectable with FDG (Siva et al. 2017). Antiangiogenic drugs, such as TKI and Mammalian Target of Rapamycin Inhibitors, as well as Immune Checkpoints Inhibitors, are the standard of care for mRCC systemic treatment (Pichler

and Heidegger 2017; Escudier et al. 2019; Pozzessere et al. 2019; Powles et al. 2021). As PSMA is expressed in the neovasculature of RCC, this feature could help in the selection of patients with increased intrarenal tumor-driven angiogenesis, who could potentially benefit from antiangiogenic drugs (Toyama et al. 2021). Moreover, providing an in vivo readout of neovascular density in RCC lesions, PSMA PET/CT could be a valid tool to assess response to treatment and to define the correct timing for stopping systemic therapy (Evangelista et al. 2020). Such a help could be of great utility to identify patients in pseudo-progression after target therapies. This phenomenon consists of a transient increase in tumor volume and represents an important limit of conventional imaging for discriminating it from true progression (Pozzessere et al. 2019). A preliminary work from Mittlmeier et al. (Mittlmeier et al. 2021) provides a good starting point for future works on this perspective, particularly in patients with SD at RECIST 1.1 on ceCT. Future trials should also focus on the analysis of the relationships between PSMA PET/CT changes in therapy response assessment and overall survival.

In mRCC patients with high PSMA avidity, another future perspective is represented by Radioligand Therapy. In a theranostic approach, mRCC could be first imaged with PSMA PET/CT and subsequently treated with PSMA labeled with β -emitting (such as ¹⁷⁷Lu or ⁹⁰Y) or α -emitting (such as ²²⁵Ac) radionuclides, as it happens today for neuroendocrine

Table 2 Summary of the ongoing clinical trials with PSMA PET/CT (source: <https://clinicaltrials.gov/>)

Trial identifier number	Phase	status	PSMA tracer	Aim
NCT04987086	NA	Recruiting	⁶⁸ Ga-PSMA-11	(1) To evaluate the diagnostic efficacy of ⁶⁸ Ga-PSMA PET in metastatic lesions of locally advanced and advanced RCC, and to compare with that of ceCT. (2) To evaluate whether ⁶⁸ Ga-PSMA PET can change the treatment decision of patients with locally advanced and advanced RCC.
NCT05170555	NA	Recruiting	⁶⁸ Ga-PSMA-11	(1) To evaluate the uptake of ⁶⁸ Ga-PSMA in RCC compared to 18F-FDG. (2) To assess the feasibility of ¹⁷⁷ Lu-EB-PSMA-617 treatment in patients with the advanced RCC.
NCT03427476	I	Completed	¹⁸ F-CTT1057	To test a novel diagnostic PET imaging agent, binding PSMA expressing tumors, for safety and biodistribution.
NCT03387514	II	Completed	¹⁸ F-DCFPyL	To assess response to systemic therapy (anti-angiogenesis and/or immune-based therapies) in patients with mRCC comparing PSMA imaging with the conventional RECIST 1.1 criteria and histopathological endpoints (including isolation, enumeration, and staining of circulating tumor cells).
NCT03073395	I	Recruiting	⁶⁸ Ga-P16-093	(1) To evaluate the uptake of ⁶⁸ Ga-P16-093 in metastatic prostate and renal cancer. (2) Measurement of the whole-body biodistribution of ⁶⁸ Ga-P16-093 in prostate cancer patients to generate human radiation dosimetry data.
NCT04147494	Early I	Recruiting	⁶⁸ Ga-PSMA-11, ⁶⁸ Ga-FAPI-46	(1) To define the biodistribution of radiotracers in normal and cancer tissues of patients with various non-prostate malignancies, including RCC. (2) To evaluate whether ⁶⁸ Ga-PSMA-11 uptake correlates with the amount PSMA in excised cancer tissue.

ceCT contrast-enhanced Computed Tomography, mRCC metastatic Renal Cell Carcinoma, NA not applicable, PET/CT positron emission tomography/computed tomography, PSMA prostate-specific membrane antigen, Recist 1.1 Response Evaluation Criteria In Solid Tumors version 1.1., RCC Renal Cell Carcinoma

Table 3 Current utility and future perspectives of PSMA-ligands imaging and ^{18}F -FDG PET/CT in the different subtypes of RCC (–, +, ++ for low, intermediate and high utility of the imaging, respectively; values between brackets represent future perspectives)

Histotype	PSMA-ligands Imaging			RLT	^{18}F -FDG PET/CT		
	Staging	Restaging	Therapy Response assessment		Staging	Restaging	Therapy Response assessment
ccRCC	++	+++	+(+)	(++)	+	+	+
chrRCC	+	++	(++)	(+)	–	–	–
pRCC	–	–	–	–	++	++	++

^{18}F -FDG ^{18}F -Fluorodeoxyglucose, *ccRCC* clear cell Renal Cell Carcinoma, *chrRCC* chromophobe Renal Cell Carcinoma, *PET/CT* positron emission tomography/computed tomography, *pRCC* papillary Renal Cell Carcinoma, *PSMA* prostate-specific membrane antigen, *RLT* Radioligand Therapy with radiolabelled PSMA-ligands

tumors and prostate cancer (Zhang et al. 2021; Uccelli et al. 2021). This approach could be particularly useful in chrRCC, where PSMA expression is usually high and therapeutic options are limited (Baccala et al. 2007; Spatz et al. 2018; Toyama et al. 2021). Moreover, as radioligand therapy is usually a well-tolerated treatment, future evidences are welcome also in patients with suboptimal clinical conditions and limited therapeutic opportunities. Table 3 summarizes current evidences and future opportunities of PSMA-ligands imaging in the new oncological field of RCC.

The main limitations to this work are represented by the relative low number of RCC patients studied with PSMA PET/CT and the retrospective nature of most of the studies reported. Moreover, RCC comprehends a spectrum of very heterogeneous histotypes, which complicate a unitary and homogeneous analysis of the literature. Finally, the use of different PSMA radiotracers available, some labeled with ^{18}F and some with ^{68}Ga , represents an additional confounding factor. In fact, despite having multiple radiotracers is a good prospect for the future use of this imaging modality, the lack, at present, of robust papers directly comparing currently available radiotracers undoubtedly represents a limitation in the analysis of literature data.

Conclusions

This work emerges that PSMA PET/CT has the credentials to represent a valid imaging option in RCC. The main limitations of its current use in clinical practice are the relative low number of patients investigated and the high heterogeneity of RCC. Despite these drawbacks, the premises are encouraging for staging and restaging locally advanced, oligometastatic, and mRCC, in particular ccRCC. Undefined renal masses evaluation and therapy response assessment (TKI, mTOR and ICI in particular) are other promising indications, that should be further explored in the near future. Finally, in a theranostic approach, PSMA-based RLT could represent a future treatment option in mRCC expressing PSMA at PET imaging.

Author contributions Conceptualization, LU and AC; bibliography research, LU, AC, GCR, and FL; writing—original draft preparation, LU and AC; writing—review and editing, SP, CC, LU, MC, CI, AF, and MB; image preparation, SP and LF. All authors have read and agreed to the published version of the manuscript.

Funding No funding was received by the authors of this review.

Data availability Not applicable.

Code availability Not applicable.

Declarations

Conflict of interest The authors declare that they have no competing interests.

Ethics approval Not applicable.

Consent to participate Not applicable.

Consent for publication The authors give their consent to publish this review article.

Open Access This article is licensed under a Creative Commons Attribution 4.0 International License, which permits use, sharing, adaptation, distribution and reproduction in any medium or format, as long as you give appropriate credit to the original author(s) and the source, provide a link to the Creative Commons licence, and indicate if changes were made. The images or other third party material in this article are included in the article's Creative Commons licence, unless indicated otherwise in a credit line to the material. If material is not included in the article's Creative Commons licence and your intended use is not permitted by statutory regulation or exceeds the permitted use, you will need to obtain permission directly from the copyright holder. To view a copy of this licence, visit <http://creativecommons.org/licenses/by/4.0/>.

References

Afshar-Oromieh A, Babich JW, Kratochwil C et al (2016) The rise of PSMA ligands for diagnosis and therapy of prostate cancer. *J Nucl Med.* <https://doi.org/10.2967/jnumed.115.170720>

- Ahn T, Roberts MJ, Abduljabar A et al (2019) A review of prostate-specific membrane antigen (PSMA) positron emission tomography (PET) in Renal Cell Carcinoma (RCC). *Mol Imaging Biol* 21:799–807
- Aide N, Cappele O, Bottet P et al (2003) Efficiency of [18F]FDG PET in characterising renal cancer and detecting distant metastases: a comparison with CT. *Eur J Nucl Med Mol Imaging* 30(30):1236–1245. <https://doi.org/10.1007/S00259-003-1211-4>
- Alongi P, Picchio M, Zattoni F et al (2015) Recurrent Renal Cell Carcinoma: clinical and prognostic value of FDG PET/CT. *Eur J Nucl Med Mol Imaging* 43(43):464–473. <https://doi.org/10.1007/S00259-015-3159-6>
- Baccala A, Sercia L, Li J et al (2007) Expression of prostate-specific membrane antigen in tumor-associated neovasculature of renal neoplasms. *Urology* 70:385–390
- Bertagna F, Motta F, Bertoli M et al (2013) Role of F18-FDG-PET/CT in restaging patients affected by renal carcinoma. *Nucl Med Rev* 16:3–8. <https://doi.org/10.5603/NMR.2013.0002>
- Bravaccini S, Puccetti M, Bocchini M et al (2018) PSMA expression: a potential ally for the pathologist in prostate cancer diagnosis. *Sci Rep*. <https://doi.org/10.1038/s41598-018-22594-1>
- Ballard BD, Guzman N (2021) Renal Mass. *StatPearls*
- Bray F, Ferlay J, Soerjomataram I et al (2018) Global cancer statistics 2018: GLOBOCAN estimates of incidence and mortality worldwide for 36 cancers in 185 countries. *CA Cancer J Clin* 68:394–424. <https://doi.org/10.3322/CAAC.21492>
- Capitanio U, Pepe G, Incerti E et al (2021) The role of 18F-FAZA PET/CT in detecting lymph node metastases in Renal Cell Carcinoma patients: a prospective pilot trial. *Eur J Nucl Med Mol Imaging* 48:554–560. <https://doi.org/10.1007/s00259-020-04936-2/Publi shed>
- Carlin S, Zhang H, Reese M et al (2014) A comparison of the imaging characteristics and microregional distribution of 4 hypoxia PET tracers. *J Nucl Med* 55:515–521. <https://doi.org/10.2967/jnumed.113.126615>
- Chachami G, Paraskeva E, Mingot JM et al (2009) Transport of hypoxia-inducible factor HIF-1 α into the nucleus involves importins 4 and 7. *Biochem Biophys Res Commun* 390:235–240. <https://doi.org/10.1016/J.BBRC.2009.09.093>
- Chang SS, Reuter VE, Heston WDW, Gaudin PB (2001) Metastatic Renal Cell Carcinoma neovasculature expresses prostate-specific membrane antigen. *Urology* 57:801–805. [https://doi.org/10.1016/S0090-4295\(00\)01094-3](https://doi.org/10.1016/S0090-4295(00)01094-3)
- Chen Y, Pullambhatla M, Foss CA et al (2011) 2-(3-(1-Carboxy-5-[(6-[18 F]fluoro-pyridine-3-carbonyl)-amino]-pentyl)-ureido)-pentanedioic acid, [18 F]DCFPyL, a PSMA-based PET imaging agent for prostate cancer. *Clin Cancer Res*. <https://doi.org/10.1158/1078-0432.CCR-11-1357>
- Chen R, Zhou X, Huang G, Liu J (2019) Bisphosphatase 1 expression reduces 18 F-FDG uptake in clear cell Renal Cell Carcinoma. *Res Artic Fruct* 1:6. <https://doi.org/10.1155/2019/9463926>
- Dabestani S, Thorstenson A, Lindblad P et al (2016) (2016) Renal Cell Carcinoma recurrences and metastases in primary non-metastatic patients: a population-based study. *World J Urol* 34(34):1081–1086. <https://doi.org/10.1007/S00345-016-1773-Y>
- Demirci E, Ocak M, Kabasakal L et al (2014) 68Ga-PSMA PET/CT imaging of metastatic clear cell Renal Cell Carcinoma. *Eur J Nucl Med Mol Imaging* 41:1461–1462. <https://doi.org/10.1007/s00259-014-2766-y>
- Escudier B, Porta C, Schmidinger M et al (2019) Renal Cell Carcinoma: ESMO Clinical Practice Guidelines for diagnosis, treatment and follow-up. *Ann Oncol* 30:706–720. <https://doi.org/10.1093/ANNONC/MDZ056>
- Evangelista L, Basso U, Maruzzo M, Novara G (2020) The role of radiolabeled prostate-specific membrane antigen positron emission tomography/computed tomography for the evaluation of renal cancer. *Eur Urol Focus* 6:146–150. <https://doi.org/10.1016/J.EUF.2018.08.004>
- Foley RW, Redman SL, Graham RN et al (2020) Fluorine-18 labelled prostate-specific membrane antigen (PSMA)-1007 positron-emission tomography–computed tomography: normal patterns, pearls, and pitfalls. *Clin Radiol* 75:903–913. <https://doi.org/10.1016/J.CRAD.2020.06.031>
- Frew IJ, Moch H (2015) A clearer view of the molecular complexity of clear cell Renal Cell Carcinoma. *Annu Rev Pathol Mech Dis* 10:263–289. <https://doi.org/10.1146/ANNURV-PATHOL-012414-040306>
- Gao J, Xu Q, Fu Y et al (2020) Comprehensive evaluation of 68Ga-PSMA-11 PET/CT parameters for discriminating pathological characteristics in primary clear-cell Renal Cell Carcinoma. *Eur J Nucl Med Mol Imaging* 48(2):561–569. <https://doi.org/10.1007/S00259-020-04916-6>
- Giesel FL, Hadaschik B, Cardinale J et al (2016) F-18 labelled PSMA-1007: biodistribution, radiation dosimetry and histopathological validation of tumor lesions in prostate cancer patients. *Eur J Nucl Med Mol Imaging*. <https://doi.org/10.1007/s00259-016-3573-4>
- Giesel FL, Will L, Paddubny K et al (2018) [18F]PSMA-1007 PET improves the diagnosis of local recurrence and lymph node metastases in a prostate cancer patient with a history of bilateral hip arthroplasty. *Clin Genitourin Cancer* 16:111–114. <https://doi.org/10.1016/j.clgc.2017.11.008>
- Golan S, Aviv T, Groshar D et al (2021) Dynamic 68Ga-PSMA-11 PET/CT for the primary evaluation of localized renal mass: a prospective study. *J Nucl Med* 62:773–778. <https://doi.org/10.2967/jnumed.120.251272>
- Gormley TS, Van Every MJ, Moreno AJ (1996) Renal oncocyoma: preoperative diagnosis using technetium 99m sestamibi imaging. *Urology* 48:33–39. [https://doi.org/10.1016/S0090-4295\(96\)00095-7](https://doi.org/10.1016/S0090-4295(96)00095-7)
- Gühne F, Seifert P, Theis B et al (2021) PSMA-PET/CT in patients with recurrent clear cell Renal Cell Carcinoma: histopathological correlations of imaging findings. *Diagnostics*. <https://doi.org/10.3390/diagnostics11071142>
- Hendrikse NH, Franssen EJ, van der Graaf WT et al (1998) 99mTc-sestamibi is a substrate for P-glycoprotein and the multidrug resistance-associated protein. *Br J Cancer* 77:353. <https://doi.org/10.1038/BJC.1998.57>
- Hou G, Zhao D, Jiang Y et al (2021) Clinical utility of FDG PET/CT for primary and recurrent papillary Renal Cell Carcinoma. *Cancer Imaging* 21:25. <https://doi.org/10.1186/S40644-021-00393-8>
- Lindenberg L, Mena E, Choyke PL, Bouchelouche K (2019) PET imaging in renal cancer. *Curr Opin Oncol* 31:216–221. <https://doi.org/10.1097/CCO.0000000000000518>
- Liu Y (2016) The place of FDG PET/CT in Renal Cell Carcinoma: value and limitations. *Front Oncol*. <https://doi.org/10.3389/FONC.2016.00201>
- Ljungberg B, Campbell SC, Cho HY et al (2011) The epidemiology of Renal Cell Carcinoma. *Eur Urol* 60:615–621. <https://doi.org/10.1016/J.EURURO.2011.06.049>
- Lopez C, Egalini F, Caputo M et al (2020) Il versante endocrinologico della sindrome di von Hippel-Lindau (vHLs). *L'endocrinologo* 21:332–337. <https://doi.org/10.1007/s40619-020-00776-2>
- Ma H, Shen G, Liu B et al (2017) Diagnostic performance of 18F-FDG PET or PET/CT in restaging Renal Cell Carcinoma: a systematic review and meta-analysis. *Nucl Med Commun* 38:156–163. <https://doi.org/10.1097/MNM.0000000000000618>
- Marafi F, Sasikumar A, Al-Terki A, Alfeeli M (2020) F-PSMA 1007 in suspected Renal Cell Carcinoma. *Clin Nucl Med* 45:377–378. <https://doi.org/10.1097/RLU.00000000000003002>
- Meyer AR, Carducci MA, Denmeade SR et al (2019) Improved identification of patients with oligometastatic clear cell Renal Cell

- Carcinoma with PSMA-targeted 18F-DCFPyL PET/CT. *Ann Nucl Med* 33:617–623. <https://doi.org/10.1007/s12149-019-01371-8>
- Mittlmeier LM, Unterrainer M, Rodler S et al (2021) 18F-PSMA-1007 PET/CT for response assessment in patients with metastatic Renal Cell Carcinoma undergoing tyrosine kinase or checkpoint inhibitor therapy: preliminary results. *Eur J Nucl Med Mol Imaging*. <https://doi.org/10.1007/s00259-020-05165-3/Published>
- O'Connor SD, Pickhardt PJ, Kim DH et al (2012) Incidental finding of renal masses at unenhanced CT: prevalence and analysis of features for guiding management. *Am J Roentgenol* 197:139–145. <https://doi.org/10.2214/AJR.10.5920>
- Ozgül Ekmekcioglu L, Busstra M, Klass ND, Verzijlbergen F (2019) Bridging the imaging gap: PSMA PET/CT has a high impact on treatment planning in prostate cancer patients with biochemical recurrence—a narrative review of the literature. *J Nucl Med* 60:1394–1398. <https://doi.org/10.2967/jnumed.118.222885>
- Özülker T, Özülker F, Özbek E, Özpaçacı T (2011) A prospective diagnostic accuracy study of F-18 fluorodeoxyglucose-positron emission tomography/computed tomography in the evaluation of indeterminate renal masses. *Nucl Med Commun* 32:265–272. <https://doi.org/10.1097/MNM.0B013E3283442E3B>
- Padala SA, Padala SA, Barsouk A et al (2020) Epidemiology of Renal Cell Carcinoma. *World J Oncol* 11:79–87. <https://doi.org/10.4021/wjon.v11i3.1279>
- Park JW, Jo MK, Lee HM (2009) Significance of 18F-fluorodeoxyglucose positron-emission tomography/computed tomography for the postoperative surveillance of advanced Renal Cell Carcinoma. *BJU Int* 103:615–619. <https://doi.org/10.1111/J.1464-410X.2008.08150.X>
- Pianou NK, Stavrou P, Vlontzou E et al (2019) More advantages in detecting bone and soft tissue metastases 18 from prostate cancer using F-PSMA PET/CT 1 1 1 1. *Hell J Nucl Med* 106:6–9
- Pichler R, Heidegger I (2017) Novel concepts of antiangiogenic therapies in metastatic renal cell cancer. *MEMO*. <https://doi.org/10.1007/s12254-017-0344-2>
- Pierorazio PM, Hyams ES, Tsai S et al (2013) Multiphasic enhancement patterns of small renal masses (≤ 4 cm) on preoperative computed tomography: utility for distinguishing subtypes of Renal Cell Carcinoma, angiomyolipoma, and oncocytoma. *Urology*. <https://doi.org/10.1016/j.urology.2012.12.049>
- Powles T, Albiges L, Bex A et al (2021) ESMO Clinical Practice Guideline update on the use of immunotherapy in early stage and advanced Renal Cell Carcinoma. *Ann Oncol* 32:1511–1519. <https://doi.org/10.1016/J.ANNONC.2021.09.014>
- Pozzessere C, Bassanelli M, Ceribelli A et al (2019) Renal Cell Carcinoma: the oncologist asks, can PSMA PET/CT answer? *Curr Urol Rep* 20:1
- Raveenthiran S, Esler R, Yaxley J, Kyle S (2019) The use of 68Ga-PET/CT PSMA in the staging of primary and suspected recurrent Renal Cell Carcinoma. *Eur J Nucl Med Mol Imaging* 46:2280–2288. <https://doi.org/10.1007/s00259-019-04432-2>
- Rhee H, Blazak J, Tham CM et al (2016) Pilot study: use of gallium-68 PSMA PET for detection of metastatic lesions in patients with renal tumour. *EJNMMI Res*. <https://doi.org/10.1186/S13550-016-0231-6>
- Rowe SP, Gorin MA, Hammers HJ et al (2015) Imaging of metastatic clear cell Renal Cell Carcinoma with PSMA-targeted 18F-DCFPyL PET/CT. *Ann Nucl Med* 29:877–882. <https://doi.org/10.1007/s12149-015-1017-z>
- Rowe SP, Gorin MA, Solnes LB et al (2017) Correlation of 99mTc-sestamibi uptake in renal masses with mitochondrial content and multi-drug resistance pump expression. *EJNMMI Res*. <https://doi.org/10.1186/S13550-017-0329-5>
- Saadat S, Tie B, Wood S et al (2018) Imaging tumour thrombus of clear cell Renal Cell Carcinoma: FDG PET or PSMA PET? Direct in vivo comparison of two technologies. *Urol Case Rep* 16:4. <https://doi.org/10.1016/J.EUCR.2017.09.010>
- Sawicki LM, Buchbender C, Boos J et al (2017) Diagnostic potential of PET/CT using a 68Ga-labelled prostate-specific membrane antigen ligand in whole-body staging of Renal Cell Carcinoma: initial experience. *Eur J Nucl Med Mol Imaging* 44:102–107. <https://doi.org/10.1007/s00259-016-3360-2>
- Schwarzenboeck SM, Rauscher I, Bluemel C et al (2017) PSMA ligands for PET imaging of prostate cancer. *J Nucl Med*. <https://doi.org/10.2967/jnumed.117.191031>
- Seitz AK, Rauscher I, Haller B et al (2018) Preliminary results on response assessment using 68Ga-HBED-CC-PSMA PET/CT in patients with metastatic prostate cancer undergoing docetaxel chemotherapy. *Eur J Nucl Med Mol Imaging* 45:602–612. <https://doi.org/10.1007/S00259-017-3887-X/FIGURES/1>
- Seront E, Lhommel R, Tombal B (2021) Case report: early 68 Ga-PSMA-PET metabolic assessment and response to systemic treatment for first-line metastatic clear cell Renal Cell Carcinoma; about two clinical cases. *Front Oncol*. <https://doi.org/10.3389/fonc.2021.782166>
- Siva S, Callahan J, Pryor D et al (2017) Utility of 68Ga prostate specific membrane antigen—positron emission tomography in diagnosis and response assessment of recurrent Renal Cell Carcinoma. *J Med Imaging Radiat Oncol* 61:372–378. <https://doi.org/10.1111/1754-9485.12590>
- Siva S, Udovicich C, Tran B et al (2020) Expanding the role of small-molecule PSMA ligands beyond PET staging of prostate cancer. *Nat Rev Urol* 17(17):107–118. <https://doi.org/10.1038/s41585-019-0272-5>
- Spatz S, Tolkach Y, Jung K et al (2018) Comprehensive evaluation of prostate specific membrane antigen expression in the vasculature of renal tumors: implications for imaging studies and prognostic role. *J Urol* 199:370–377. <https://doi.org/10.1016/J.JURO.2017.08.079>
- Tariq A, Kwok M, Pearce A et al (2021) The role of dual tracer PSMA and FDG PET/CT in Renal Cell Carcinoma (RCC) compared to conventional imaging: a multi-institutional case series with intra-individual comparison. *Urol Oncol Semin Orig Investig*. <https://doi.org/10.1016/J.UROLONC.2021.11.006>
- Toyama Y, Werner RA, Ruiz-Bedoya CA et al (2021) Current and future perspectives on functional molecular imaging in nephrology: theranostics on the horizon. *Theranostics* 11:6105–6119
- Tung I, Sahu A (2021) Immune checkpoint inhibitor in first-line treatment of metastatic Renal Cell Carcinoma: a review of current evidence and future directions. *Front Oncol*. <https://doi.org/10.3389/FONC.2021.707214>
- Uccelli L, Boschi A, Cittanti C et al (2021) 90Y/177Lu-DOTATOC: from preclinical studies to application in humans. *Pharmaceutics*. <https://doi.org/10.3390/PHARMACEUTICS13091463>
- Uijen MJM, Derks YHW, Merks RJJ et al (2021) PSMA radioligand therapy for solid tumors other than prostate cancer: background, opportunities, challenges, and first clinical reports. *Eur J Nucl Med Mol Imaging* 48:4350. <https://doi.org/10.1007/S00259-021-05433-W>
- Van De Wiele C, Sathekge M, De Spiegeleer B et al (2019) Molecular sciences PSMA-targeting positron emission agents for imaging solid tumors other than non-prostate carcinoma: a systematic review. *Int J Mol Sci*. <https://doi.org/10.3390/ijms20194886>
- Wang HY, Ding HJ, Chen JH et al (2012) Meta-analysis of the diagnostic performance of [18F]FDG-PET and PET/CT in Renal Cell Carcinoma. *Cancer Imaging* 12:464–474
- Wohlrab C, Vissers MCM, Phillips E et al (2018) The association between ascorbate and the hypoxia-inducible factors in human Renal Cell Carcinoma requires a functional von Hippel-Lindau protein. *Front Oncol*. <https://doi.org/10.3389/FONC.2018.00574>

Yin Y, Campbell SP, Markowski MC et al (2019) Inconsistent detection of sites of metastatic non-clear cell Renal Cell Carcinoma with PSMA-targeted [18F]DCFPyL PET/CT. *Mol Imaging Biol* 21:567–573. <https://doi.org/10.1007/s11307-018-1271-2>

Zhang H, Koumna S, Pouliot F et al (2021) PSMA theranostics: current landscape and future outlook. *Cancers (basel)*. <https://doi.org/10.3390/CANCERS13164023>

Publisher's Note Springer Nature remains neutral with regard to jurisdictional claims in published maps and institutional affiliations.