

LETTER TO EDITOR

Multicohort and cross-platform validation of a prognostic Wnt signature in colorectal cancer

Dear Editor,

Deregulation of the Wnt pathway is a hallmark of colorectal cancer (CRC). Nevertheless, the clinical implications of aberrant β -catenin-driven gene transcription remain elusive.¹

We herein present a transcriptional WNT signature predicting survival outcomes in metastatic CRC (mCRC). Wnt was studied in a discovery cohort (94 mCRC patients treated with first-line therapy at Regina Elena National Cancer Institute, IRE cohort, Table S1) by combining targeted RNA-Seq (expression levels of 93 Wnt-associated genes, Illumina TruSeq Targeted RNA Expression Wnt Panel) and targeted DNA sequencing.² Given the molecular communication between Wnt and the DNA damage repair (DDR) system,³ as well as the Hippo pathway,⁴ immunohistochemistry (IHC) in tissue microarrays (TMAs) was used for studying protein-level markers (pRPA32, pATR, pCHK1, pWEE1, γ H2AX, pATM, pCHK2, YAP, and TAZ).

For external validation, we considered three independent and publically available datasets (N = 1366) previously used for developing the consensus molecular subtype⁵: TCGA, N = 576 (RNA-Seq)⁶; GSE39582, N = 558,⁷ and GSE17538, N = 232 (Affymetrix microarrays).⁸

In our analytical workflow, eight genes were selected relying on their association with survival outcomes (progression-free survival [PFS], overall survival [OS], and best overall response [BOR]). These genes were combined into a transcriptional signature exploiting their co-expression pattern: Wnt (+) tumors were defined as tumors with overexpression of at least four genes, whereas those samples that did not fulfill this criterion were defined as Wnt (-) (0-3 overexpressed genes). Individual transcripts were considered as high and low using the highest tertile as the cutoff point, even though for exploratory analyses (IRE cohort) the median value was also evaluated. Immunogenomic features were investigated through the

CRI iAtlas Portal.⁹ The workflow of this study is illustrated in Figure S1.

In the IRE cohort, we first performed an unsupervised hierarchical clustering that included the entire set of transcripts and the mutational status of Wnt genes (Figure 1A). Given that we did not observe any clear clustering, clinically focused differential gene expression analyses were performed to identify differences between outlier patients (fast vs slow progressors, short- vs long-term survivors, and good vs poor responders). (Figures 1B and S2). Afterward, differentially expressed genes were tested for their relationship with the respective clinical outcome (Figure 1C and 1D). On this basis, eight genes were selected to generate a transcriptional signature (APC, KREMEN, SFRP1, SFRP2, CSNK1A1, PRICKLE1, SOX17, and DKK1).

Except for tumor sidedness, we did not record any significant association between the Wnt signature and baseline characteristics of the patients in the IRE cohort (Figure 2A). The Wnt (+) model was significantly overrepresented in rapidly progressing tumors (Figure 2B), and patients with Wnt (+) tumors had significantly shorter PFS and OS as compared to their negative counterparts (log-rank $P = .002$ and $P = .003$, respectively; Figures 2C and 2D). Multivariate Cox regression models demonstrated that the Wnt (+) signature is an independent predictor (Figure S3). The robustness of the model was confirmed in the TCGA cohort, where patients with Wnt (+) tumors had a significant shorter survival than their negative counterparts (log rank $P = .017$; Figure 3A; multivariate Cox regression model presented in Figure S4).

In microarray-based gene expression studies (GSE17538 and GSE39582), patients with Wnt (+) disease had shorter survival (log-rank $P < .001$ and $P = .037$, respectively) (Figures 3B and 3C). Notably, we used largely overlapping probesets selected on the basis of the Pearson correlation coefficient (Figure S5). In order to better estimate the connection between the model and OS, survival analysis

This is an open access article under the terms of the [Creative Commons Attribution](https://creativecommons.org/licenses/by/4.0/) License, which permits use, distribution and reproduction in any medium, provided the original work is properly cited.

© 2020 The Authors. *Clinical and Translational Medicine* published by John Wiley & Sons Australia, Ltd on behalf of Shanghai Institute of Clinical Bioinformatics

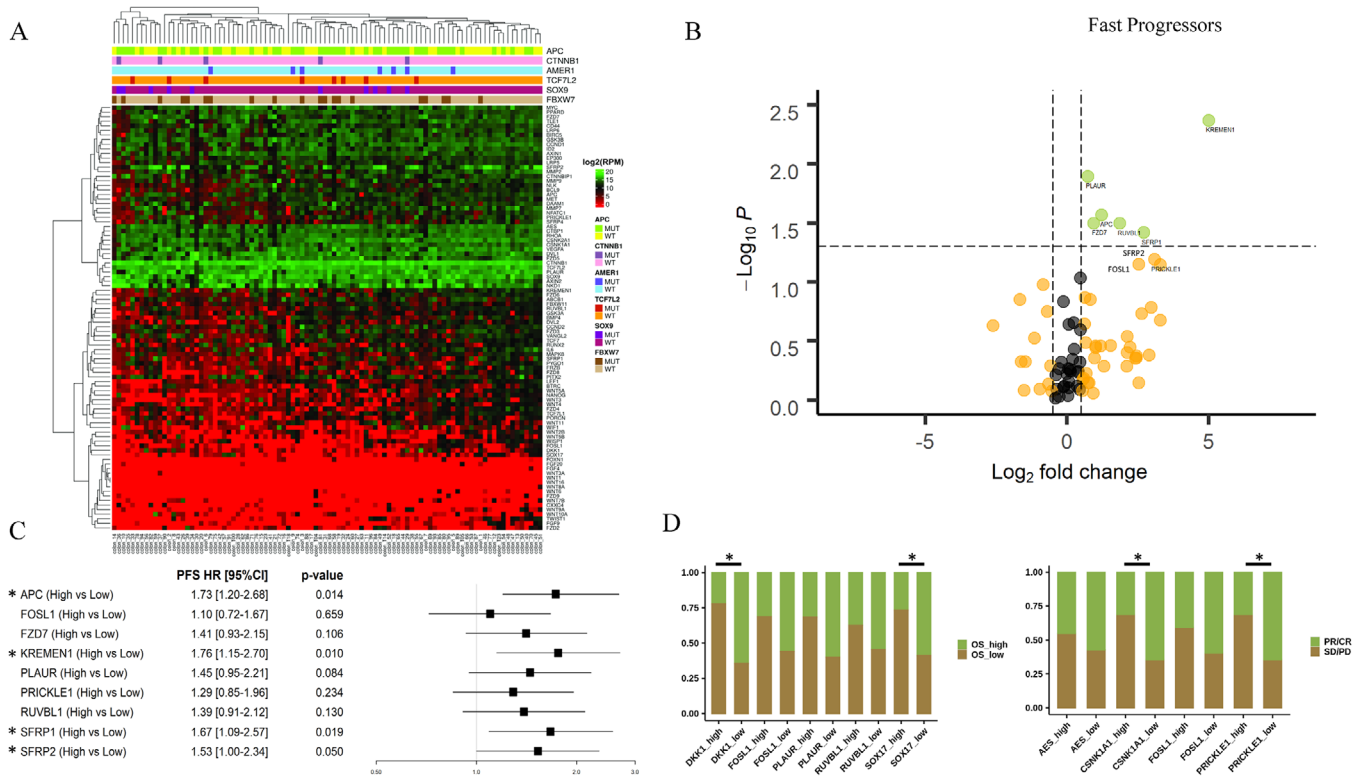


FIGURE 1 **A**, Heatmap showing unsupervised clustering analysis of Wnt genes in the IRE cohort. Targeted DNA- and RNA-Seq were employed to evaluate the mutational status of six Wnt pathway components (*APC*, *CTNNB1*, *AMER1*, *TCF7L2*, *FBXW7*, and *SOX9*) along with the expression of 93 WNT pathway genes. Genes: rows; tissue samples: columns. **B**, Volcano plot of Wnt genes differently expressed when comparing fast and slow progressors. **C**, Forest plot illustrating univariate Cox regression analyses for progression-free survival (PFS). **D**, Bar charts illustrating the distribution of individual genes in the highest/lowest quartile of overall survival (left) and in responders/non-responders (right). Transcripts are classified as high and low using the highest tertile as cutoff point. Asterisks indicate statistical significance (univariate Cox regressions in panel C and Chi2 test in panel D)

Abbreviations: CR, complete response; OS, overall survival; PD, progressive disease; PR, partial response; SD, stable disease.

was carried out in a metadataset containing the TCGA, GSE17538, and GSE39582 studies (log-rank $P < .001$; Figure S6).

Regarding the connection between our signature and driver mutations (*APC*, *TP53*, *KRAS*, *PI3KCA*, and *BRAF*, available in the IRE and TCGA cohorts), we did not observe any clear association, with the exception of *PIK3CA* mutations in the IRE cohort (Figure 3D).

As aforementioned, protein-level biomarkers related to the DDR and Hippo pathways have been evaluated in our IRE cohort (IHC on TMAs; Figure S7). The expression levels of DDR markers were similar between Wnt (+) and WNT (-) cases (Figure S8A). Consistently, in the TCGA study neither microsatellite instability nor the homologous repair deficiency signature was associated with Wnt (+) tumors (Figures S8B and S8C). To a similar extent, protein-level expression of YAP/TAZ and mRNA expression levels of the YAP/TAZ target genes *BIRC5* and *CCND1* (genes included in our targeted RNA-Seq panel) were comparable between WNT (+) and WNT (-) tumors (Figures S8D and S8E).

Finally, we investigated a possible link between the Wnt signature and core immune signatures used for generating the immune subtyping of cancers.⁹ Differences were recorded between WNT (+) and WNT (-) tumors for all the tested immune-related features (Figure 8F), suggesting a different immunological background.

This is the first report describing a multi-level and clinically focused analysis of the pathway and cross-talking networks. Two earlier reports supported a prognostic/predictive role for *APC* mutations exclusively within the frame of specific genomic contexts.^{2,10} We acknowledge the intrinsic limitation of a retrospective design. Nevertheless, we analyzed a significant number of patients, and exploiting an analytical workflow conceived to take into account three relevant clinical endpoints (PFS, OS, and BOR).

Our results suggest that (a) the co-expression pattern of eight Wnt genes identifies mCRC undergoing an unexpectedly rapid disease progression, (b) the relationship between the signature and survival outcomes seems unrelated to common genomic alterations, mechanisms

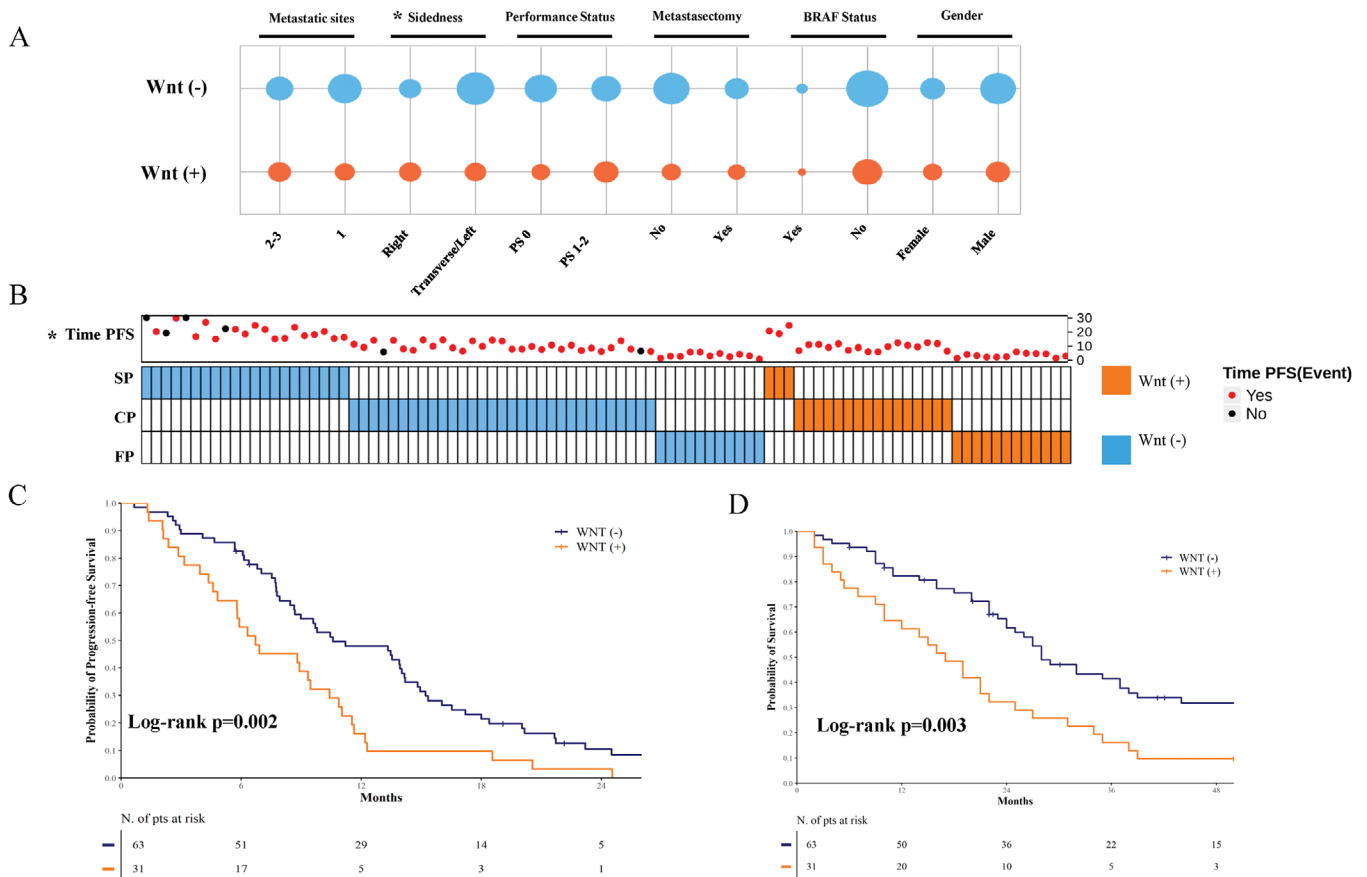


FIGURE 2 **A**, Bubble chart illustrating the associations between the Wnt signature and standard clinical-pathological features of mCRC patients included in the IRE cohort. **B**, Oncoprint illustrating the distribution of the Wnt signature according to the three different patterns of disease progression. SP: slow progressors (highest quartile of PFS), CP: conventional progressors (intermediate quartiles of PFS), FP: fast progressors (lowest quartile of PFS). Asterisks in panels **A** and **B** indicate statistical significance (χ^2 , $P < .05$). **C** and **D**, Kaplan-Meier survival curves of progression-free survival (PFS) and overall survival (OS) in the IRE cohort

that protect the mammalian genome from genotoxic cues, and YAP/TAZ, and (c) WNT (+) and WNT (-) tumors plausibly harbor a different immunological repertoire.

Collectively, our data indicate that the transcriptional WNT signature holds the potential to predict survival outcomes in mCRC. Moreover, the reproducibility of our findings in four independent studies leveraging two different gene expression technologies (RNA-Seq and microarrays) suggests the robustness of the signature.

ACKNOWLEDGMENT

We thank Tania Merlino for technical support and administrative assistance.

FUNDING INFORMATION

This study was supported by an intramural research grant to the "Gastrointestinal Tumors Translational Research Group" (MM-S and MF). MM-S is supported by a Young Investigator Grant (GR Italian Minister of Health) and

My First AIRC Grant (AIRC, Associazione Italiana per la Ricerca sul Cancro).

AUTHOR CONTRIBUTIONS

MM-S, GC, MF, IV, and RDM conceived and designed the study. FG, FDN, and LC carried out RNA-Seq and DNA-sequencing. MP, FS, IT, SS, ES, and MB performed bioinformatic and statistical analyses. LP, DS, AA, GP, BC, EG, CAA, PV, SB, MGD, EP, EK, DM, MM, and GLG acquired and reviewed clinical and pathological data. All authors have been involved in drafting the manuscript. MM-S wrote the final version of the manuscript. All authors read and approved the final version of the manuscript and agree to be accountable for all aspects of the work.

DATA AVAILABILITY STATEMENT

The data that support the findings of this study are available from the corresponding author upon reasonable request.

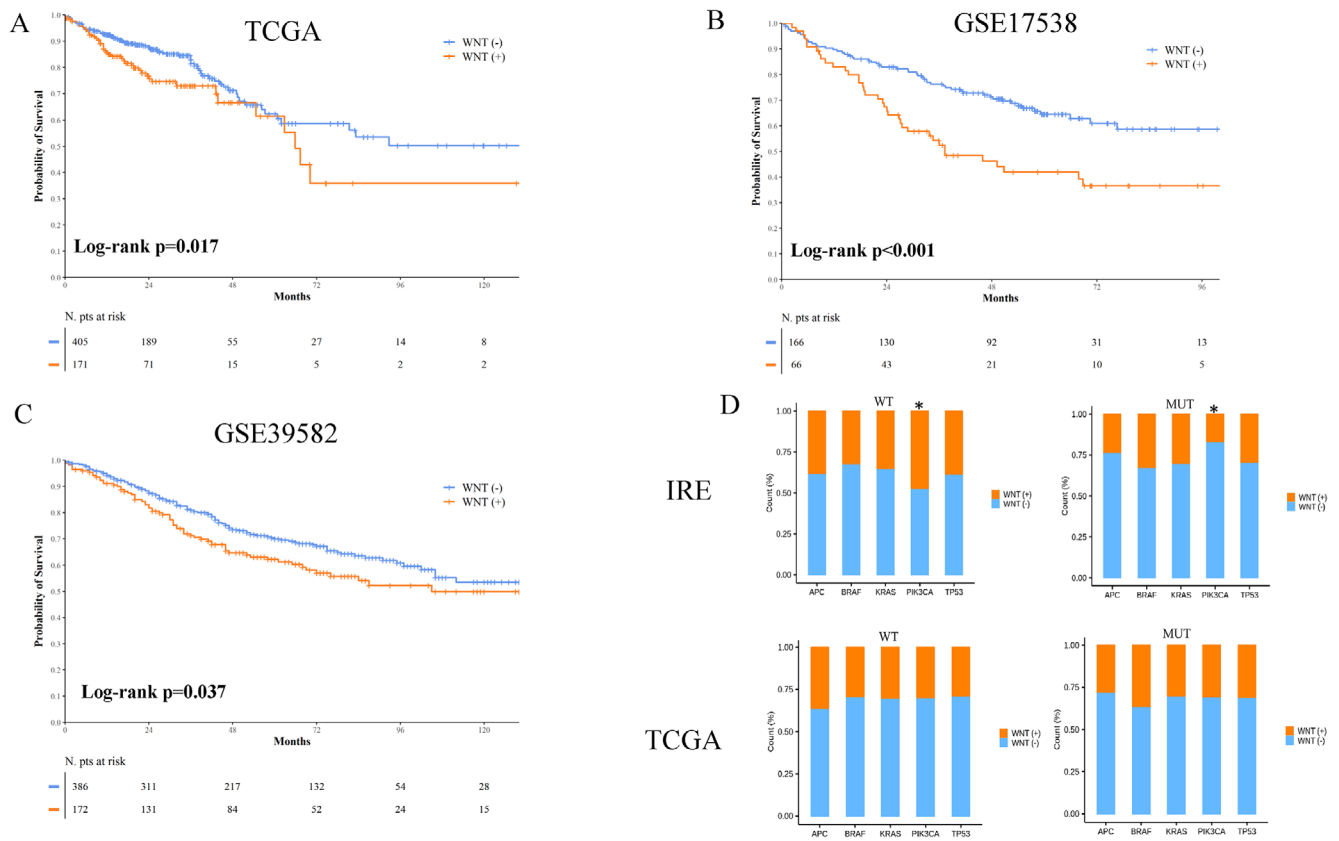


FIGURE 3 Kaplan-Meier survival curves of overall survival (OS) in the TCGA (A), GSE17538 (B), and GSE39582 (C) studies. D, Bar charts illustrating the distribution of the Wnt signature according to the mutational status of *APC*, *TP53*, *KRAS*, *PIK3CA*, and *BRAF* in the IRE and TCGA studies. Asterisk indicates statistical significance (χ^2 , $P < .05$)

CONFLICT OF INTERESTS

LP received travel grants from Eisai, Roche, Pfizer, and Novartis and speaker fees from Roche, Pfizer, Novartis, and Gentili. DS received travel grants from Roche, Pharma Mar, and Astra Zeneca and personal fees from Roche. PV received travel grants from Eisai, Roche, Pfizer, and Novartis; speaker fees/advisory boards from Roche, Pfizer, Novartis, and Gentili. RDM declares to be a scientific advisory board member at Exosomics SpA (Siena IT), Hiber-cell Inc (New York, NY, USA), Kiromic Inc (Houston, TX, USA), and at Exiris Inc (Rome, Italy). The other authors declare no conflict of interest.

Frauke Goeman¹
 Francesca De Nicola²
 Carla Azzurra Amoreo³
 Stefano Scalera²
 Daniele Marinelli⁴
 Francesca Sperati⁵
 Marco Mazzotta⁶
 Irene Terrenato⁷
 Matteo Pallocca²
 Ludovica Ciuffreda²
 Eleonora Sperandio²

Maddalena Barba⁶
 Laura Pizzuti⁶
 Domenico Sergi⁶
 Antonella Amodio⁶
 Giancarlo Paoletti⁶
 Eriseld Krasniqi⁶
 Patrizia Vici⁶
 Beatrice Casini³
 Enzo Gallo³
 Simonetta Buglioni³
 Maria Grazia Diodoro³
 Edoardo Pescarmona³
 Ilio Vitale^{8,9}
 Ruggero De Maria^{10,11}
 Gian Luca Grazi¹²
 Gennaro Ciliberto¹³
 Maurizio Fanciulli²
 Marcello Maugeri-Saccà⁶ 

¹ *Oncogenomic and Epigenetic Unit, IRCCS “Regina Elena” National Cancer Institute, Rome, Italy*

² *SAFU Laboratory, Department of Research, Advanced Diagnostic, and Technological Innovation, IRCCS “Regina Elena” National Cancer Institute, Rome, Italy*

³ Department of Pathology, IRCCS “Regina Elena”
National Cancer Institute, Rome, Italy

⁴ Medical Oncology Unit, Department of Clinical and
Molecular Medicine, Sant’Andrea Hospital, “Sapienza”
University of Rome, Rome, Italy

⁵ Biostatistics Unit, San Gallicano Dermatological Institute
IRCCS, Rome, Italy

⁶ Division of Medical Oncology 2, IRCCS “Regina Elena”
National Cancer Institute, Rome, Italy

⁷ Biostatistics-Scientific Direction, IRCCS “Regina Elena”
National Cancer Institute, Rome, Italy

⁸ Italian Institute for Genomic Medicine (IIGM), IRCCS
Candiolo, Turin, Italy

⁹ Candiolo Cancer Institute, FPO - IRCCS, Turin, Italy

¹⁰ Institute of General Pathology, Catholic University of the
Sacred Heart, Rome, Italy

¹¹ Institute of General Pathology, IRCCS Fondazione
Policlinico Universitario Agostino Gemelli, Rome, Italy

¹² Hepato-Pancreato-Biliary Surgery, IRCCS “Regina
Elena” National Cancer Institute, Rome, Italy

¹³ Scientific Direction, IRCCS “Regina Elena” National
Cancer Institute, Rome, Italy

Correspondence

Marcello Maugeri-Saccà, Division of Medical Oncology 2,
IRCCS Regina Elena National Cancer Institute, Via Elio
Chianesi 53, 00144 Rome, Italy.
Email: maugeri.marcello@gmail.com

Frauke Goeman, Francesca De Nicola, Carla Azzurra
Amoreo, Stefano Scalera, Daniele Marinelli, Francesca
Sperati, and Marco Mazzotta contributed equally to this
work.

ORCID

Marcello Maugeri-Saccà  <https://orcid.org/0000-0003-2287-9581>

REFERENCES

- Zhan T, Rindtorff N, Boutros M. Wnt signaling in cancer. *Oncogene*. 2017;36(11):1461-1473.
- De Nicola F, Goeman F, Pallocca M, et al. Deep sequencing and pathway-focused analysis revealed multigene oncodriver signatures predicting survival outcomes in advanced colorectal cancer. *Oncogenesis*. 2018;7(7):55.
- Karimaian A, Majidinia M, Bannazadeh Baghi H, Yousefi B. The crosstalk between Wnt/ β -catenin signaling pathway with DNA damage response and oxidative stress: implications in cancer therapy. *DNA Repair*. 2017;51:14-19.
- Maugeri-Saccà M, De Maria R. The Hippo pathway in normal development and cancer. *Pharmacol Ther*. 2018;186:60-72.
- Guinney J, Dienstmann R, Wang X, et al. The consensus molecular subtypes of colorectal cancer. *Nat Med*. 2015;21(11):1350-1356.
- Cancer Genome Atlas Network. Comprehensive molecular characterization of human colon and rectal cancer. *Nature*. 2012;487(7407):330-337.
- Marisa L, de Reyniès A, Duval A, et al. Gene expression classification of colon cancer into molecular subtypes: characterization, validation, and prognostic value. *PLoS Med*. 2013;10(5):e1001453.
- Smith JJ, Deane NG, Wu F, et al. Experimentally derived metastasis gene expression profile predicts recurrence and death in patients with colon cancer. *Gastroenterology*. 2010;138(3):958-968.
- Thorsson V, Gibbs DL, Brown SD, et al. The immune landscape of cancer. *Immunity*. 2018;48(4):812-830.e14.
- Schell MJ, Yang M, Teer JK, et al. A multigene mutation classification of 468 colorectal cancers reveals a prognostic role for APC. *Nat Commun*. 2016;7:11743.

SUPPORTING INFORMATION

Additional supporting information may be found online in the Supporting Information section at the end of the article.