

# Spontaneous Breathing Patterns During Maximum Extracorporeal CO<sub>2</sub> Removal in Subjects With Early Severe ARDS

Elena Spinelli, Tommaso Mauri, Alfredo Lissoni, Stefania Crotti, Thomas Langer, Marco Albanese, Carlo Alberto Volta, Carla Fornari, Paola Tagliabue, Giacomo Grasselli, and Antonio Pesenti

**BACKGROUND:** Switching patients affected by early severe ARDS and undergoing extracorporeal membrane oxygenation (ECMO) from controlled ventilation to spontaneous breathing can be either beneficial or harmful, depending on how effectively the breathing pattern is controlled with ECMO. Identifying the factors associated with ineffective control of spontaneous breathing with ECMO may advance our pathophysiologic understanding of this syndrome. **METHODS:** We conducted a prospective study in subjects with severe ARDS who were on ECMO support  $\leq 7$  d. Subjects were switched to minimal sedation and pressure-support ventilation while extracorporeal CO<sub>2</sub> removal was increased to approximate the subject's total CO<sub>2</sub> production ( $\dot{V}_{CO_2}$ ). We calculated the rapid shallow breathing index (RSBI) as breathing frequency divided by tidal volume. We explored the correlation between certain characteristics recorded during pretest controlled ventilation and the development of apnea (ie, expiratory pause lasting  $> 10$  s;  $n = 3$ ), normal breathing pattern (ie, apnea to RSBI  $\leq 105$  breaths/min/L;  $n = 6$ ), and rapid shallow breathing (RSBI  $> 105$  breaths/min/L;  $n = 6$ ) that occurred during the test study. **RESULTS:** The ratio of extracorporeal CO<sub>2</sub> removal to the subjects'  $\dot{V}_{CO_2}$  was  $>90\%$  in all 15 subjects, and arterial blood gases remained within normal ranges. Baseline pretest Sequential Organ Failure Assessment score, total  $\dot{V}_{CO_2}$  and ventilatory ratio increased steadily, whereas  $P_{aO_2}/F_{IO_2}$  was higher in subjects with apnea compared to intermediate RSBI  $\leq 105$  breaths/min/L and elevated RSBI  $>105$  breaths/min/L. In subjects with rapid shallow breathing, baseline lung weight measured with quantitative computed tomography scored higher, as well. **CONCLUSIONS:** In early severe ARDS, the factors associated with rapid shallow breathing despite maximum extracorporeal CO<sub>2</sub> extraction include less efficient CO<sub>2</sub> and O<sub>2</sub> exchange by the natural lung, higher severity of organ failure, and greater magnitude of lung edema. *Key words:* ARDS; computed tomography; ECMO; spontaneous breathing; ventilatory response. [Respir Care 2020;65(7):911–919. © 2020 Daedalus Enterprises]

## Introduction

In patients affected by ARDS, spontaneous breathing can result in multiple physiological benefits, such as

---

Drs Spinelli, Mauri, Lissoni, Crotti, Langer, Tagliabue, Grasselli, and Pesenti are affiliated with the Department of Anesthesia, Critical Care and Emergency, Fondazione IRCCS Ca' Granda Ospedale Maggiore Policlinico, Milan, Italy. Drs Mauri, Langer, Grasselli, and Pesenti are affiliated with the Department of Pathophysiology and Transplantation, University of Milan, Milan, Italy. Drs Albanese and Volta Fornari are affiliated with the Department of Morphology, Surgery and Experimental Medicine, Section of Anesthesia and Intensive Care, University of Ferrara, Italy. Ms Fornari is affiliated with the Department of Medicine and Surgery, Research Centre on Public Health, University of Milan-Bicocca, Monza, Italy.

improved ventilation-perfusion matching, preserved respiratory muscle function, and decreased need for sedatives.<sup>1</sup> However, during the early acute phase of severe ARDS, the patient's breathing pattern might be overactivated by a variety of factors, including derangement of arterial blood gases, activation of lung receptors by excessive edema, or

---

Dr Grasselli has disclosed relationships with Getinge, Draeger Medical, Fisher & Paykel, Pfizer, and Biotest. Dr Pesenti has disclosed relationships with Maquet, Novalung/Xenios, Baxter, and Boehringer Ingelheim. This work was supported in part by institutional funding from the Department of Anesthesia, Critical Care and Emergency, Fondazione IRCCS Ca' Granda Ospedale Maggiore Policlinico, Milan, Italy. The remaining authors have disclosed no conflicts of interest.

non-physiological displacement of the chest wall.<sup>2,3</sup> A combination of these conditions may cause an uncontrolled breathing pattern, which increases the risk of lung and diaphragm injury.<sup>4,5</sup> In severe ARDS, early switching to spontaneous respiratory activity while monitoring the breathing pattern may provide the physiological benefits described above and also avoid additional injury.<sup>6</sup>

---

SEE THE RELATED EDITORIAL ON PAGE 1057

---

Extracorporeal membrane oxygenation (ECMO) is widely used in patients with severe ARDS who are unresponsive to conventional treatment.<sup>7,8</sup> In addition to improving oxygenation, ECMO allows effective removal of CO<sub>2</sub>, which is expected to control the respiratory drive and facilitate protective spontaneous breathing.<sup>9-11</sup> Previous studies have reported that ECMO can reduce the breathing frequency to apnea in healthy lungs or to quiet breathing in subjects recovering from severe ARDS.<sup>11,12</sup> On the other hand, pilot observations have noted that subjects affected by early severe ARDS might not achieve a safe spontaneous breathing pattern despite the presence of ECMO support.<sup>13,14</sup> None of the studies performed during early ARDS explored the correlation between pretest physiology and the breathing pattern during maximum extracorporeal CO<sub>2</sub> removal, nor did they describe the relationship between control of the breathing pattern by CO<sub>2</sub> removal and clinical outcomes.

In this prospective pilot study, we analyzed the spontaneous breathing pattern during maximum extracorporeal CO<sub>2</sub> removal in intubated subjects with early severe ARDS on ECMO, with the purpose of identifying subjects in whom spontaneous breathing pattern was poorly controlled with ECMO, describing pretest physiological characteristics associated with failure of breathing control, and exploring associations between breathing control and clinical outcomes.

Our hypothesis was that subjects with poor control over their breathing pattern might be characterized by more severe baseline lung injury and worse clinical outcomes.<sup>13</sup> If proven true, our findings might inform a larger clinical study aimed at establishing a safe protocol to switch to spontaneous breathing in subjects affected by early severe ARDS undergoing ECMO.

---

Correspondence: Tommaso Mauri MD, Department of Anesthesia, Critical Care and Emergency, Fondazione IRCCS Ca' Granda Ospedale Maggiore Policlinico, Via F. Sforza 35, 20122 Milan, Italy. E-mail: [tommaso.mauri@unimi.it](mailto:tommaso.mauri@unimi.it)

DOI: 10.4187/respcare.07391

## QUICK LOOK

### Current knowledge

Extracorporeal membrane oxygenation provides oxygenation and allows CO<sub>2</sub> removal, which could control the respiratory pattern of patients with ARDS. However, pilot observations indicate that, in subjects with early severe ARDS, CO<sub>2</sub> removal may fail to control the spontaneous breathing pattern.

### What this paper contributes to our knowledge

In subjects with early severe ARDS, maximum CO<sub>2</sub> removal led to high interindividual variability in terms of spontaneous breathing pattern. The factors associated with poor control of the respiratory pattern during pretest baseline conditions were P<sub>aO<sub>2</sub></sub>/F<sub>IO<sub>2</sub></sub>, ventilatory ratio, the SOFA score, the subject's total CO<sub>2</sub> production, and the lung weight measured with computed tomography. All of these factors indicated more severe lung injury and greater systemic involvement.

## Methods

### Population

The study was conducted within the intensive care unit of Fondazione IRCCS Ca' Granda Ospedale Maggiore Policlinico, in Milan, Italy. It was approved by the Institutional Ethics Committee (reference number 1496). Informed consent was obtained from each subject according to local regulations. All consecutive, intubated, sedated, and paralyzed patients with severe ARDS on venovenous ECMO were screened for enrollment in the study between October 2016 and February 2018. Paralysis is a usual practice in our center for patients with severe ARDS during the first days they are connected to ECMO.

Subjects with severe ARDS on venovenous ECMO support (Maquet CARDIOHELP device with HLS Set Advanced or Maquet PLS membrane oxygenator with Rotaflow pump and console; Getinge Italia, Cinisello Balsamo, Italy) for at least 48 h and ≤ 7 d were included. Patients with > 7 d of intubation before ECMO start, hemodynamic instability (mean arterial blood pressure < 60 mm Hg despite vasoactive drugs), pulmonary plasma leakage, alveolar bleeding, moribund status, or refusal by the physician in charge were excluded.

### Data Collection

The following data were collected under clinical settings before starting (ie, pretest conditions): demographic data, ARDS etiology, Sequential Organ Failure Assessment

(SOFA) score, controlled mechanical ventilation and ECMO settings, respiratory mechanics, arterial and mixed venous blood gases, and intrapulmonary shunt fraction according to standard equation. Physiological dead space was also calculated pretest, using the Enghoff modification of the Bohr equation.<sup>15,16</sup> A modified ventilatory ratio<sup>17</sup> was calculated as:

$$\frac{[(\text{Minute ventilation (mL/min)} + \text{ECMO sweep gas flow (mL/min)}) \times P_{a\text{CO}_2} \text{ (mm Hg)}] / [\text{predicted body weight} \times 100 \text{ (mL/min)} \times 37.5 \text{ (mm Hg)}]}$$

Lung CT scans performed between intubation and enrollment for clinical reasons were quantitatively analyzed to measure total and regional lung weight as previously described.<sup>18</sup> Regional quantitative analysis of the dependent and nondependent regions of the lung was performed by dividing in half each contoured area of the CT scan sectional images.

Lastly, the total number of days on ventilation, days spent on controlled mechanical ventilation until day 28 from intubation, total ECMO duration, and hospital mortality were collected.

### Study Protocol

A nasogastric tube equipped with an integrated esophageal balloon (Nutrivent, Sidam, Mirandola, Italy) was used to measure esophageal pressure ( $P_{\text{es}}$ ) by the standard method.<sup>19-21</sup> A combined infrared  $\text{CO}_2$  and flow sensor was inserted between the Y-piece of the circuit ventilator and the endotracheal tube. This sensor was connected to a volumetric capnograph ( $\text{CO}_2\text{SMO Plus}$ , Novamatrix Medial, Wallington, Connecticut) to measure natural lung  $\dot{V}_{\text{CO}_2}$ . Hemodynamics (invasive arterial pressure and heart rate), peripheral oxygen saturation and  $\dot{V}_{\text{CO}_2}$  of the natural lung were monitored at all times.  $\dot{V}_{\text{CO}_2}$  removed with ECMO was calculated by multiplying the mean  $\text{CO}_2$  concentration in the gas exiting the membrane lung by the rate of sweep gas flow.<sup>13</sup> Each subject's total  $\dot{V}_{\text{CO}_2}$  was calculated as the sum of the  $\dot{V}_{\text{CO}_2}$  of the natural lung and  $\dot{V}_{\text{CO}_2}$  removed with ECMO).<sup>12,13</sup>

The study consisted of 5 phases. First, sedative drugs and neuromuscular blocking agents were discontinued. The subject achieved a stable grade on the Richmond Agitation Sedation Scale between  $-2$  and  $0$ . Evidence of inspiratory trigger and no residual paralysis could be then ascertained. Second, subjects were switched to pressure-support ventilation ( $5 \text{ cm H}_2\text{O}$  or  $10 \text{ cm H}_2\text{O}$  in subjects with tidal volume  $< 100 \text{ mL}$ ) while maintaining clinical PEEP and  $F_{\text{IO}_2}$ .

Third, ECMO sweep gas flow with  $F_{\text{IO}_2}$   $1.0$  was steadily increased to reach  $\dot{V}_{\text{CO}_2}$  of the natural lung  $\leq 20 \text{ mL/}$

min as measured with the volumetric capnography monitor. This value was identified as a suitable working compromise for the high probability of obtaining maximum  $\text{CO}_2$  removal by ECMO (ie,  $\dot{V}_{\text{CO}_2}$  removed with ECMO  $> 90\%$  of total  $\dot{V}_{\text{CO}_2}$ ). Fourth, the selected gas flow was maintained for  $15 \text{ min}$ , and, finally, data collection was performed.

During phase 5, the waveforms of  $P_{\text{es}}$ , airway pressure with an end-expiratory hold, and flow were recorded. Arterial blood gas analysis,  $\dot{V}_{\text{CO}_2}$  of the natural lung, and  $\dot{V}_{\text{CO}_2}$  removed with ECMO were measured. The following data were gathered from offline analysis: tidal volume, breathing frequency (measured as the number of negative deflections of  $P_{\text{es}}$  in a minute), the presence of pauses in the breathing frequency  $> 10 \text{ s}$ , minute ventilation, airway-occlusion pressure  $0.1 \text{ s}$  after the start of inspiration against an occluded airway, and driving transpulmonary pressure. After data collection, deep sedation, paralysis, pretest controlled ventilation, and ECMO settings were promptly restored.

### Characteristics of the Breathing Pattern

For each subject, using the data measured offline, we calculated the rapid shallow breathing index (RSBI) as the ratio between breathing frequency and tidal volume.<sup>22</sup> Subjects were grouped into 3 categories:

- (1) Subjects developing apnea (ie, absence of inspiratory  $P_{\text{es}}$  deflections for  $> 10 \text{ s}$ );
- (2) Subjects with normal breathing pattern (ie,  $\text{RSBI} \leq 105 \text{ breaths/min/L}$ );
- (3) Subjects with rapid shallow breathing (ie,  $\text{RSBI} > 105 \text{ breaths/min/L}$ ).

### Statistical Analysis

Categorical variables are reported as frequency (percentage); continuous variables are reported as median (interquartile range). Comparisons between groups were performed with the chi-square or Fisher exact test for categorical variables, and with the Kruskal-Wallis nonparametric test for continuous variables. To disclose baseline pretest variables associated with increasingly unphysiological breathing patterns, the Spearman correlation coefficient was calculated. The sample size was similar to previous studies.<sup>12,13</sup>  $P$  values  $< .05$  were considered statistically significant.

## Results

### Population

We screened 23 consecutive patients between October 2016 and February 2018, and 15 subjects were enrolled in

SPONTANEOUS BREATHING PATTERNS ON ECMO IN ARDS

Table 1. Baseline Pretest Characteristics of the Study Population

Parameter	All Subjects
Age, y	53 (48–60)
Female	8 (53)
ARDS etiology	
Extrapulmonary infectious	1 (6)
Pulmonary infectious	10 (67)
Pulmonary noninfectious	4 (27)
Duration of ECMO, d	3 (2–6)
SOFA score	8 (6–10)
Intrapulmonary shunt, %	43.3 (33.0–53.0)
Physiological dead space	0.7 (0.6–0.8)
Ventilatory ratio	1.8 (1.3–21.1)
Baseline pretest controlled ventilation settings	
PEEP, cm H <sub>2</sub> O	15 (12–18)
Tidal volume, mL/kg predicted body weight	5.1 (4.5–6.1)
Driving pressure, cm H <sub>2</sub> O	10 (9–13)
Plateau pressure, cm H <sub>2</sub> O	27 (25–28)
Breathing frequency, breaths/min	8 (8–10)
Respiratory system compliance, mL/cm H <sub>2</sub> O	30.0 (21.5–44.4)
F <sub>IO<sub>2</sub></sub>	0.50 (0.40–0.70)
P <sub>aO<sub>2</sub></sub> , mm Hg	68.6 (60.0–77.0)
Arterial pH	7.41 (7.30–7.44)
P <sub>aCO<sub>2</sub></sub> , mm Hg	45.7 (44.0–48.0)
ECMO blood flow, L/min	3.2 (2.9–3.8)
ECMO gas flow, L/min	5.5 (3.5–8.0)
Total CO <sub>2</sub> production, mL/min	236 (189–274)

Data are presented as median (interquartile range) and *n* (%). *N* = 15 subjects.  
 ECMO = extracorporeal membrane oxygenation  
 SOFA = Sequential Organ Failure Assessment

the study. Eight patients were excluded due to hemodynamic instability (*n* = 3), pulmonary plasma leakage (*n* = 2), alveolar bleeding (*n* = 1), or organizational reasons (*n* = 2). Characteristics, clinical severity, baseline ventilation, and ECMO settings of the enrolled subjects before commencement of the study protocol are reported in Table 1. Subjects were enrolled after a median of 5 d (4–8) from intubation and 3 d (–6) of ECMO. Total duration of ECMO support was 13 d (6–9), and hospital mortality was 20% (*n* = 3 subjects).

Dynamic Respiratory Response to Maximum  $\dot{V}_{CO_2}$  Removal With ECMO

Ventilation settings, gas exchange, and breathing pattern during phase 5 are reported in Table 2. A single, well-defined breathing pattern was recognized in each subject. Despite maximum  $\dot{V}_{CO_2}$  removal with ECMO [ie, median ratio of  $\dot{V}_{CO_2}$  removed with ECMO to total  $\dot{V}_{CO_2}$ , obtained during study phase 4 was 99.7% (98.0–100) with ECMO gas flow of 12.0 L/min (8.5–17.5)] and almost normal levels of P<sub>aCO<sub>2</sub></sub>, pH, and P<sub>aO<sub>2</sub></sub>, apnea occurred only in 3 of 15 subjects (20%). Six subjects (40%) presented normal breathing pattern with RSBI ≤ 105 breaths/min/L, and 6 subjects (40%) developed rapid shallow breathing with RSBI > 105 bpm/L. Among the variables measured during the test, only respiratory frequency increased in subjects with less physiological control over breathing (Table 2). Remarkably, during the test, the ratio between  $\dot{V}_{CO_2}$  extraction with the ECMO system and the subject’s total  $\dot{V}_{CO_2}$  stayed constant across the 3 groups.

Table 2. Parameters Measured During Spontaneous Breathing and Maximum Extracorporeal  $\dot{V}_{CO_2}$  Removal With ECMO

Parameter	All Subjects	Apnea	RSBI ≤ 105	RSBI > 105	<i>P</i> *
P <sub>aO<sub>2</sub></sub> , mm Hg	74.7 (61.4–92.8)	84.7 (60.1–132.0)	72.4 (69.5–84.6)	71.1 (60.2–92.8)	.79
Arterial pH	7.43 (7.38–7.45)	7.45 (7.45–7.46)	7.43 (7.39–7.44)	7.41 (7.34–7.45)	.27
P <sub>aCO<sub>2</sub></sub> , mm Hg	42.7 (39.9–46.7)	39.9 (38.6–41.3)	43.4 (41.4–46.7)	46.4 (42.7–56.6)	.12
Base excess, mmol/L	4.3 (2.3–4.9)	4.3 (2.9–4.9)	3.0 (0.6–4.5)	4.7 (2.9–5.4)	.46
Natural lung $\dot{V}_{CO_2}$ , mL/min	1.0 (0.0–7.0)	0.0 (0.0–0.0)	3.0 (1.0–12.0)	3.5 (0.0–7.0)	.15
ECMO $\dot{V}_{CO_2}$ , mL/min	290 (253–315)	290 (235–315)	307 (285–320)	271 (253–290)	.60
ECMO $\dot{V}_{CO_2}$ /total $\dot{V}_{CO_2}$ , %	99.7 (98.0–100.0)	100.0 (100.0–100.0)	100.0 (96.3–99.7)	99.8 (98.0–100.0)	.43
Tidal volume, mL/kg predicted body weight	2.6 (1.8–3.9)	3.2 (0.0–3.9)	3.7 (2.0–5.5)	2.05 (1.6–2.6)	.17
Breathing frequency, breaths/min	15 (8–23)	4 (0–7)	11 (10–16)	21 (17–25)	.01
Minute ventilation, L/min	1.7 (3.2–1.4)	0.9 (0.0–1.3)	2.1 (1.3–6.5)	2.6 (1.3–3.4)	.09
P <sub>0.1</sub> , cm H <sub>2</sub> O	0.5 (0.4–1.1)	0.2 (0.0–1.0)	0.6 (0.4–0.8)	0.75 (0.4–1.5)	.37
Driving transpulmonary pressure, cm H <sub>2</sub> O	7.3 (7.0–9.0)	6.5 (5.0–9.0)	7.1 (7.0–8.0)	10.0 (7.0–12.0)	.24

Data are presented as median (interquartile range). All subjects: *N* = 15; Apnea: *n* = 3; RSBI ≤ 105: *n* = 6; RSBI > 105: *n* = 6.  
 \*Kruskal-Wallis nonparametric test.  
 ECMO = extracorporeal membrane oxygenation  
 RSBI = rapid shallow breathing index  
 ECMO  $\dot{V}_{CO_2}$  =  $\dot{V}_{CO_2}$  removed with ECMO  
 P<sub>0.1</sub> = airway-occlusion pressure 0.1 s after the start of inspiration against an occluded airway

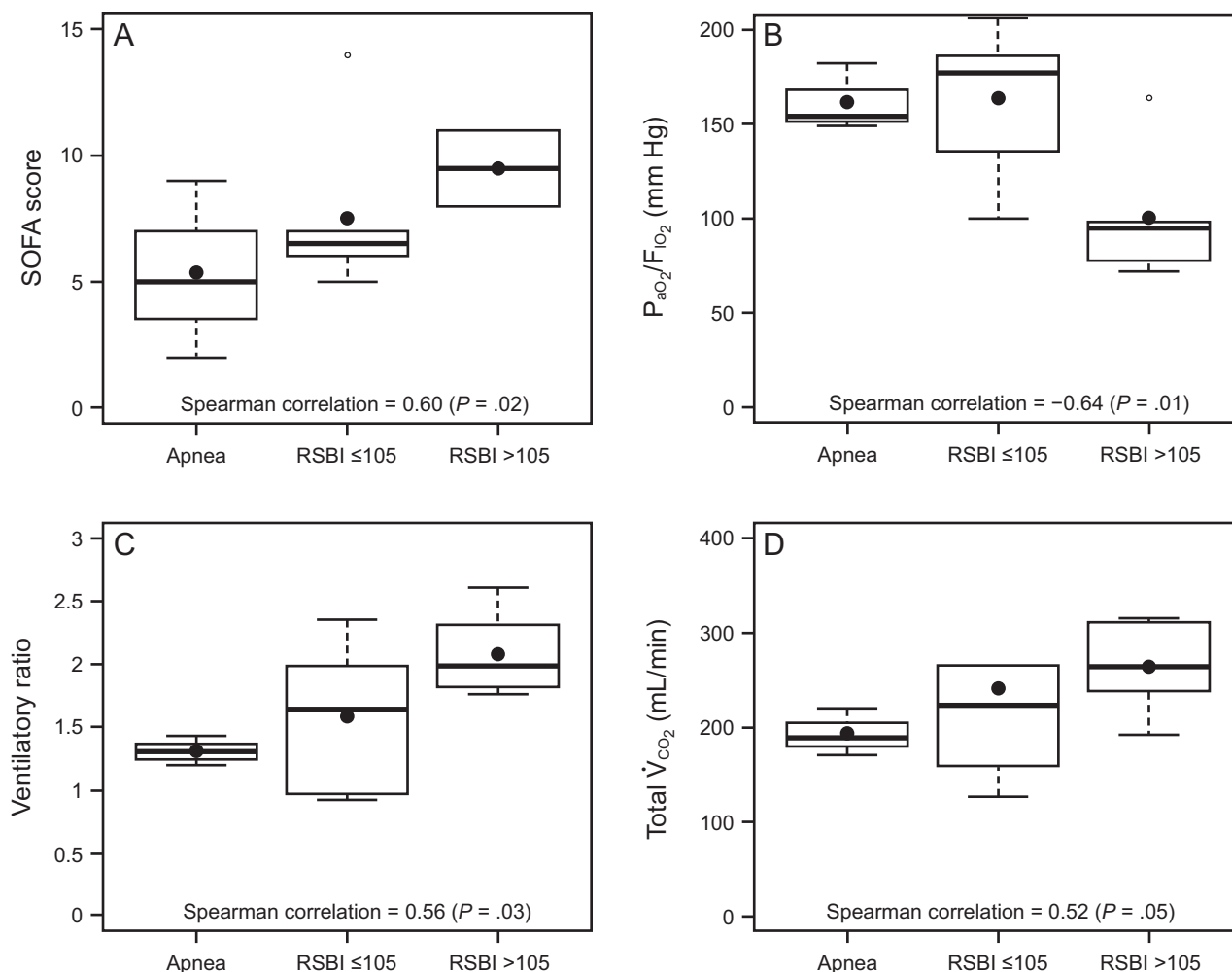


Figure 1. During maximal extra-corporeal  $CO_2$  extraction, (from left to right) in subjects developing apnea, with a normal breathing pattern and  $RSBI \leq 105$ , and with rapid shallow breathing and  $RSBI > 105$  (see text for details), the SOFA score and the total subjects  $CO_2$  production increased (both indicating worse clinical severity), the  $P_{aO_2}/F_{iO_2}$  ratio decreased and the ventilatory ratio increased (indicating less efficient lung function). Data are presented as 10th, 25th, 50th, 75th, and 90th percentiles with box plots. Correlations were tested with Spearman nonparametric coefficients. SOFA = Sequential Organ Failure Assessment; RSBI = rapid shallow breathing index.

### Pretest Baseline Variables Correlated with Spontaneous Breathing Patterns

The correlations between baseline characteristics collected during controlled ventilation before the start of the study protocol and the 3 spontaneous breathing patterns were evaluated. Variables showing worse values in subjects with higher RSBI (Fig. 1) were the SOFA score and the subject's total  $CO_2$  production (both indicating greater clinical severity);  $P_{aO_2}/F_{iO_2}$ ; and the ventilatory ratio (2 indexes of less efficient oxygenation and elimination of  $CO_2$  by the diseased lungs). Moreover, in the CT scan analysis ( $n = 12$ ), subjects with rapid shallow breathing showed greater total lung weight due to excessive edema in the nondependent regions (Fig. 2). Interestingly, traditional indexes of ARDS severity, such as lower respiratory system compliance, higher

driving pressure, higher dead space, and larger intrapulmonary shunt, weren't correlated with the development of a more rapid shallow breathing pattern ( $P > .05$  for all).

### Clinical Outcomes

The median number of days free from controlled mechanical ventilation at day 28 was 23 d (0–26) in subjects with apnea, 18 d (14–23) in subjects with  $RSBI \leq 105$  breaths/min/L, and 2 d (0–13) in subjects with rapid shallow breathing ( $P = .10$ ). The total duration of mechanical ventilation was 19 d (10–55) versus 14 d (11–48) versus 39 d (28–61) for apnea versus  $RSBI \leq 105$  breaths/min/L versus  $RSBI > 105$  breaths/min/L ( $P = .43$ ); duration of ECMO support was 7 d (5–17) versus 10 d (6–39) versus 28 d (10–47) for apnea versus  $RSBI \leq 105$  breaths/min/L



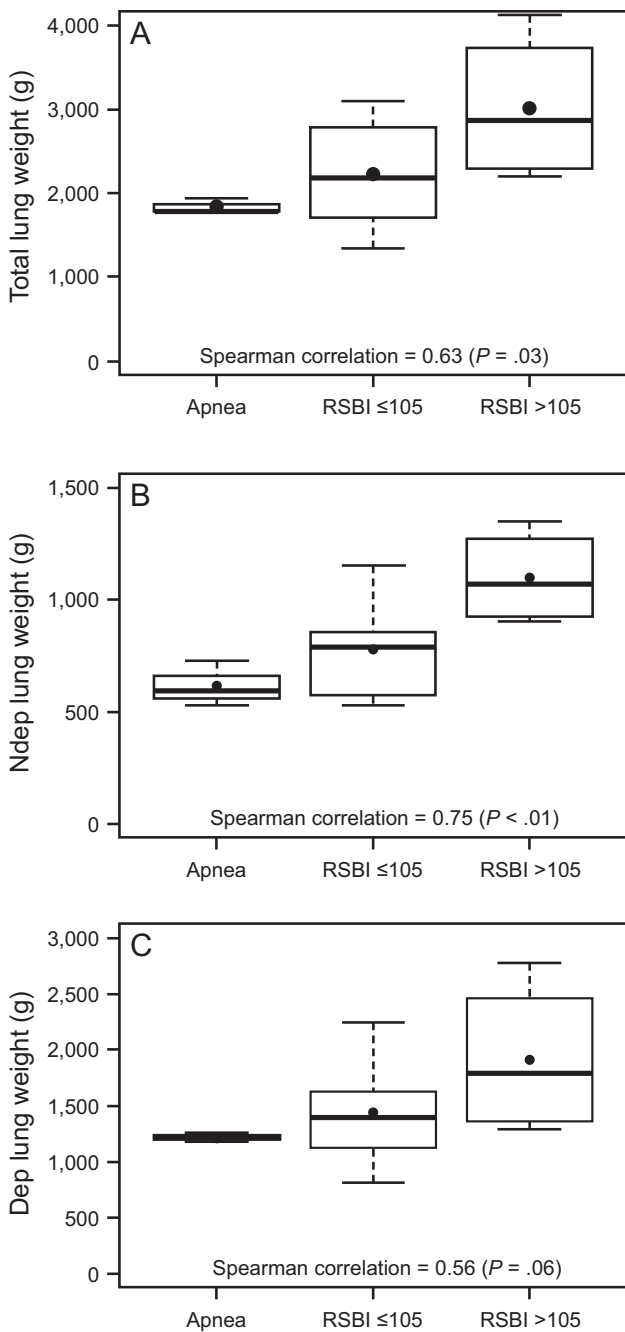


Figure 2. Global and regional lung weight measured with computed tomography in subjects with complete, partial, or poor control of breathing by CO<sub>2</sub> removal. Subjects developing apnea showed lower lung weight in comparison to subjects with RSBI ≤ 105, and subjects with RSBI > 105 showed the highest lung weight. Notably, difference in lung weight was more evident in the nondependent lung regions. Data are presented as 10th, 25th, 50th, 75th, and 90th percentiles by box plots. Correlations were tested with Spearman nonparametric coefficients. RSBI = rapid shallow breathing index.

versus RSBI > 105 breaths/min/L ( $P = .36$ ). Lastly, 12 (80%) subjects were successfully disconnected from ECMO, completed weaning, and survived. Hospital mortality rates within the study population were 0 of 3 (0%) subjects versus 0 of 6 (0%) subjects versus 3 of 6 (50%) subjects for apnea versus RSBI ≤ 105 breaths/min/L versus RSBI > 105 breaths/min/L ( $P = .17$ ).

**Discussion**

The key findings of this pilot study can be summarized as follows: subjects with early severe ARDS undergoing maximum  $\dot{V}_{CO_2}$  removal with ECMO exhibit extremely high interindividual variability in terms of spontaneous breathing pattern, with a group developing uncontrolled rapid shallow breathing. During baseline controlled ventilation, poor control of spontaneous breathing despite maximum  $\dot{V}_{CO_2}$  removal may be predicted by faulty O<sub>2</sub> and CO<sub>2</sub> exchange by the natural lung, more severe systemic involvement, or greater lung weight on CT scan analysis. Subjects with poor control of spontaneous breathing by  $\dot{V}_{CO_2}$  removal may have increased mortality and may not tolerate early transition to assisted breathing.

The risk of developing additional self-inflicted lung injury hinders spontaneous breathing in patients affected by early severe ARDS. Indeed, in cases of severe ARDS, controlled mechanical ventilation is recommended to avoid the risk of high respiratory drive, which worsens lung injury through uncontrolled spontaneous breathing patterns.<sup>5</sup> Fine tuning of the spontaneous respiratory pattern by  $\dot{V}_{CO_2}$  removal is an appealing alternative approach to protect the severe ARDS lung because maximum  $\dot{V}_{CO_2}$  removal could theoretically allow a safe spontaneous breathing pattern.<sup>23</sup> However, accumulating evidence indicates that the inverse linear relationship between extracorporeal  $\dot{V}_{CO_2}$  removal with ECMO and minute ventilation might be impaired in patients with early severe ARDS. Preclinical data in an animal model of severe ARDS indicated that a subgroup of animals had only a minimal decrease of their minute ventilation despite the  $\dot{V}_{CO_2}$  removed with ECMO being ≥90% of total  $\dot{V}_{CO_2}$ .<sup>24</sup> In clinical settings, ECMO allowed almost linear control of the spontaneous breathing pattern in subjects recovering from severe ARDS<sup>12,25,26</sup>; however, persistently heightened respiratory frequency and increased effort despite substantial  $\dot{V}_{CO_2}$  removal with ECMO were described in subjects with early severe ARDS.<sup>13,14</sup> Thus, in the present study, we further explored full breathing control in subjects with early severe ARDS through maximum  $\dot{V}_{CO_2}$  extraction with ECMO, confirming the high degree of interindividual variability. The range of respiratory breathing patterns was extremely wide despite similarly

high ECMO support and normal arterial blood gases: only 3 subjects reached apnea, 40% of subjects exhibited a normal breathing pattern, and 40% of subjects developed uncontrolled rapid shallow breathing. The fact that rapid shallow breathing resulted mostly from high respiratory frequency may indicate that poor respiratory system mechanics and muscular weakness limited the subjects' ability to increase tidal volume.<sup>6</sup> Lack of control of the spontaneous breathing pattern with ECMO most likely highlights our limited understanding of severe ARDS patho-physiology, because radically different phenotypes might coexist under the same diagnosis.<sup>27-30</sup>

To account for the intrinsic heterogeneity of early severe ARDS, pretest identification of subjects for whom ECMO could allow effective control of spontaneous breathing may be clinically crucial because an early switch to assisted breathing might be dangerous in non-responders and beneficial in responders. In this study, increasingly nonphysiologic breathing patterns during maximum ECMO support were associated with lower pretest oxygenation efficiency, higher weighted minute ventilation needed to maintain normal CO<sub>2</sub> levels (ie, the ventilatory ratio), more severe organ dysfunction, more intense systemic metabolic activation, and more extensive and diffuse lung edema. Our findings suggest 2 directions on the pathophysiological understanding of severe ARDS.

On one hand, the intrinsic severity of lung injury could represent a direct and independent trigger for respiratory drive. Whereas P<sub>aO<sub>2</sub></sub>/F<sub>I<sub>O<sub>2</sub></sub> is a stratification factor in ARDS by definition, ventilatory ratio is a relatively new and interesting marker of ARDS severity.<sup>15,31</sup> In the early phase of ARDS, poor efficiency of CO<sub>2</sub> extraction by the natural lung is mainly due to diffuse microvascular injury and occlusion of ventilated units deriving from overactivation of coagulation by the inflammatory processes.<sup>32,33</sup> Likewise, an increase in lung weight as measured with CT is a direct quantification of the spreading of alveolar inflammatory lung edema, which is probably the most sensitive measure of the "core" extent of ARDS severity.<sup>18,34,35</sup> The nondependent lung is usually spared the most from consolidations (ie, the baby lung), and it seems reasonable that our finding of higher lung edema in this region indicates more severe lung injury.<sup>18</sup> In this context, the exaggerated activation of pulmonary receptors due to increasingly severe forms of ARDS could be responsible for an uncontrolled respiratory pattern independent of CO<sub>2</sub> removal.<sup>34-37</sup></sub>

On other hand, systemic involvement deriving from the spread of pulmonary inflammation could limit the role of arterial blood gas values in controlling respiratory drive.<sup>38</sup> In our subjects, greater involvement of systemic

organs quantified by the SOFA score and higher total  $\dot{V}_{CO_2}$  (ie, a hypermetabolic state, as suggested also by a higher ventilatory ratio) could indicate that ARDS wasn't "compartmentalized" enough, suggesting a link between severity of lung injury and the systemic spread of detrimental lung mediators, which has already been described.<sup>39</sup> In this context, derangements of regional pH and tissue CO<sub>2</sub> values could have overridden the respiratory drive to develop nonphysiologic breathing patterns. Lastly, our exploratory observation that subjects developing rapid shallow breathing exhibited a delayed switch to assisted ventilation and a higher mortality rate may suggest that the proposed test can identify a more critical subgroup of patients with early severe ARDS. This reasoning should be considered as hypothesis-generating, given the pilot nature of our study and considering the limited experience and experimental data available on the topic, as well as the wide reported interindividual variability. Still, a brief test of spontaneous breathing under maximum extracorporeal  $\dot{V}_{CO_2}$  removal could be proposed as a screening test to assess control of spontaneous breathing pattern in individual subjects.

This study has several limitations. First, the short duration of the study protocol presented safety advantages, but it may limit its validity because spontaneous breathing patterns might have been affected by residual sedation and too little time to reach stable physiological conditions. Nevertheless, arterial gas exchange already reached normal values, thus limiting the influence of the hypoxic and hypercapnic drive during the test. Second, the study protocol was performed under pressure-support ventilation, but other modes of assisted ventilation (eg, proportional modes) could have affected breathing patterns differently.<sup>12,37</sup> Third, volumetric capnography is currently the most widely used method to measure the  $\dot{V}_{CO_2}$  of the natural lung, but we must acknowledge that the dynamic nature of the measurements we took with very small and variable tidal volumes might underestimate the  $\dot{V}_{CO_2}$  exhaled through the natural lung.

## Conclusions

Response to maximum extracorporeal  $\dot{V}_{CO_2}$  removal with ECMO in terms of control of spontaneous breathing in subjects with early severe ARDS presented high interindividual variability, with a subgroup clearly characterized by uncontrolled rapid shallow breathing. Failure to control the breathing pattern with CO<sub>2</sub> removal might be associated with less efficient O<sub>2</sub> delivery and CO<sub>2</sub> elimination by the natural lung, more serious organ failure, and systemic metabolic activation, as well as by increased lung weight.

REFERENCES

1. Putensen C, Zech S, Wrigge H, Zinserling J, Stüber F, Von Spiegel T, Mutz N. Long-term effects of spontaneous breathing during ventilatory support in patients with acute lung injury. *Am J Respir Crit Care Med* 2001;164(1):43-49.
2. Trenchard D, Gardner D, Guz A. Role of pulmonary vagal afferent nerve fibres in the development of rapid shallow breathing in lung inflammation. *Clin Sci* 1972;42(3):251-263.
3. Lin S, Walker J, Xu L, Gozal D, Yu J. Behaviours of pulmonary sensory receptors during development of acute lung injury in the rabbit. *Exp Physiol* 2007;92(4):749-755.
4. Yoshida T, Uchiyama A, Matsuura N, Mashimo T, Fujino Y. The comparison of spontaneous breathing and muscle paralysis in two different severities of experimental lung injury. *Crit Care Med* 2013;41(2):536-545.
5. Brochard L, Slutsky A, Pesenti A. Mechanical ventilation to minimize progression of lung injury in acute respiratory failure. *Am J Respir Crit Care Med* 2017;195(4):438-442.
6. Mauri T, Cambiaghi B, Spinelli E, Langer T, Grasselli G. Spontaneous breathing: a double-edged sword to handle with care. *Ann Transl Med* 2017;5(14):292.
7. Combes A, Brodie D, Bartlett R, Brochard L, Brower R, Conrad S, et al. Position paper for the organization of extracorporeal membrane oxygenation programs for acute respiratory failure in adult patients. *Am J Respir Crit Care Med* 2014;190(5):488-496.
8. Combes A, Pesenti A, Ranieri VM. Fifty years of research in ARDS. Is extracorporeal circulation the future of acute respiratory distress syndrome management? *Am J Respir Crit Care Med* 2017;195(9):1161-1170.
9. Hoeper MM, Wiesner O, Hadem J, Wahl O, Suhling H, Duesberg C, et al. Extracorporeal membrane oxygenation instead of invasive mechanical ventilation in patients with acute respiratory distress syndrome. *Intensive Care Med* 2013;39(11):2056-2057.
10. Kurihara C, Walter JM, Singer BD, Cajigas H, Shayan S, Al-Qamari A, et al. Extracorporeal membrane oxygenation can successfully support patients with severe acute respiratory distress syndrome in lieu of mechanical ventilation. *Crit Care Med* 2018;46(11):e1070-e1073.
11. Crotti S, Bottino N, Spinelli E. Spontaneous breathing during venovenous extracorporeal membrane oxygenation. *J Thorac Dis* 2018;10(Suppl 5):S661-S669.
12. Mauri T, Grasselli G, Suriano G, Eronia N, Spadaro S, Turrini C, et al. Control of respiratory drive and effort in extracorporeal membrane oxygenation patients recovering from severe acute respiratory distress syndrome. *Anesthesiology* 2016;125(1):159-167.
13. Crotti S, Bottino N, Ruggeri GM, Spinelli E, Tubiolo D, Lissoni A, et al. Spontaneous breathing during extracorporeal membrane oxygenation in acute respiratory failure. *Anesthesiology* 2017;126(4):678-687.
14. Mauri T, Langer T, Zanella A, Grasselli G, Pesenti A. Extremely high transpulmonary pressure in a spontaneously breathing patient with early severe ARDS on ECMO. *Intensive Care Med* 2016;42(12):2101-2103.
15. Nuckton TJ, Alonso JA, Kallet RH, Daniel BM, Pittet JF, Eisner MD, Matthay MA. Pulmonary dead-space fraction as a risk factor for death in the acute respiratory distress syndrome. *N Engl J Med* 2002;346(17):1281-1286.
16. Nunn JF, Holmdahl MH. Henrik Enghoff and the volumen inefficax. *Ups J Med Sci* 1979;84(2):105-108.
17. Sinha P, Calfee CS, Beitler JR, Soni N, Ho K, Matthay MA, Kallett RH. Physiologic analysis and clinical performance of the ventilatory ratio in acute respiratory distress syndrome. *Am J Respir Crit Care Med* 2019;199(3):333-341.
18. Gattinoni L, Caironi P, Pelosi P, Goodman LR. What has computed tomography taught us about the acute respiratory distress syndrome? *Am J Respir Crit Care Med* 2001;164(9):1701-1711.
19. Mojoli F, Chiumello D, Pozzi M, Algieri I, Bianzina S, Luoni S, et al. Esophageal pressure measurements under different conditions of intrathoracic pressure: an in vitro study of second generation balloon catheters. *Minerva Anestesiologica* 2015;81(8):855-864.
20. Mauri T, Yoshida T, Bellani G, Goligher EC, Carreaux G, Rittayamai N, et al. Esophageal and transpulmonary pressure in the clinical setting: meaning, usefulness and perspectives. *Intensive Care Med* 2016;42(9):1360-1373.
21. Akoumianaki E, Maggiore SM, Valenza F, Bellani G, Jubran A, Loring SH, et al. The application of esophageal pressure measurement in patients with respiratory failure. *Am J Respir Crit Care Med* 2014;189(5):520-531.
22. Yang KL, Tobin MJ. A prospective study of indexes predicting the outcome of trials of weaning from mechanical ventilation. *N Engl J Med* 1991;324(21):1445-1450.
23. Langer T, Santini A, Bottino N, Crotti S, Batchinsky AI, Pesenti A, Gattinoni L. "Awake" extracorporeal membrane oxygenation (ECMO): pathophysiology, technical considerations, and clinical pioneering. *Crit Care* 2016;20(1):150.
24. Langer T, Vecchi V, Belenkiy SM, Cannon JW, Chung KK, Cancio LC, et al. Extracorporeal gas exchange and spontaneous breathing for the treatment of acute respiratory distress syndrome: an alternative to mechanical ventilation? *Crit Care Med* 2014;42(3):e211-e220.
25. Marcolin R, Mascheroni D, Pesenti A, Bombino M, Gattinoni L. Ventilatory impact of partial extracorporeal CO2 removal (PECOR) in ARF patients. *ASAIO Trans* 1986;32(1):508-510.
26. Mauri T, Bellani G, Grasselli G, Confalonieri A, Rona R, Patroniti N, Pesenti A. Patient-ventilator interaction in ARDS patients with extremely low compliance undergoing ECMO: a novel approach based on diaphragm electrical activity. *Intensive Care Med* 2013;39(2):282-291.
27. Ranieri VM, Rubenfeld GD, Thompson BT, Ferguson ND, Caldwell E, Fan E, et al. Acute respiratory distress syndrome: the Berlin definition. *JAMA* 2012;307(23):2526-2533.
28. Calfee CS, Delucchi K, Parsons PE, Thompson BT, Ware LB, Matthay MA, NHLBI ARDS Network. Subphenotypes in acute respiratory distress syndrome: latent class analysis of data from two randomized controlled trials. *Lancet Respir Med* 2014;2(8):611-620.
29. Famous KR, Delucchi K, Ware LB, Kangelaris KN, Liu KD, Thompson BT, Calfee CS, ARDS Network. Acute respiratory distress syndrome subphenotypes respond differently to randomized fluid management strategy. *Am J Respir Crit Care Med* 2017;195(3):331-338.
30. Calfee CS, Delucchi KL, Sinha P, Matthay MA, Hackett J, Shankar-Hari M, et al. Acute respiratory distress syndrome subphenotypes and differential response to simvastatin: secondary analysis of a randomized controlled trial. *Lancet Respir Med* 2018;6(9):691-698.
31. Kallet RH, Zhuo H, Liu KD, Calfee CS, Matthay MA, National Heart Lung and Blood Institute ARDS Network Investigators. The association between physiologic dead-space fraction and mortality in subjects with ARDS enrolled in a prospective multi-center clinical trial. *Respir Care* 2014;59(11):1611-1618.
32. Tomashefski JF, Jr., Davies P, Boggis C, Greene R, Zapol WM, Reid LM. The pulmonary vascular lesions of the adult respiratory distress syndrome. *Am J Pathol* 1983;112(1):112-126.
33. Idell S, Mazar AP, Bitterman P, Mohla S, Harabin AL. Fibrin turnover in lung inflammation and neoplasia. *Am J Respir Crit Care Med* 2001;163(2):578-584.
34. Gattinoni L, Caironi P, Valenza F, Carlesso E. The role of CT-scan studies for the diagnosis and therapy of acute respiratory distress syndrome. *Clin Chest Med* 2006;27(4):559-570.
35. Gattinoni L, Caironi P, Cressoni M, Chiumello D, Ranieri VM, Quintel M, et al. Lung recruitment in patients with the acute



## SPONTANEOUS BREATHING PATTERNS ON ECMO IN ARDS

- respiratory distress syndrome. *N Engl J Med* 2006;354(17):1775-1786.
36. Kubin L, Alheid GF, Zuperku EJ, McCrimmon DR. Central pathways of pulmonary and lower airway vagal afferents. *J Appl Physiol* (1985) 2006;101(2):618-627.
37. Georgopoulos D, Xirouchaki N, Tzanakis N, Younes M. Driving pressure during assisted mechanical ventilation: is it controlled by patient brain? *Respir Physiol Neurobiol* 2016;228:69-75.
38. Jacono FJ, Mayer CA, Hsieh YH, Wilson CG, Dick TE. Lung and brainstem cytokine levels are associated with breathing pattern changes in a rodent model of acute lung injury. *Respir Physiol Neurobiol* 2011;178(3):429-438.
39. Ranieri VM, Suter PM, Tortorella C, De Tullio R, Dayer JM, Brienza A, et al. Effect of mechanical ventilation on inflammatory mediators in patients with acute respiratory distress syndrome: a randomized controlled trial. *JAMA* 1999;282(1):54-61.

This article is approved for Continuing Respiratory Care Education credit. For information and to obtain your CRCE (free to AARC members) visit [www.rcjournal.com](http://www.rcjournal.com)

