



This is a repository copy of *Crack path and fracture analysis in FSW of small diameter 6082-T6 aluminium tubes under tension-torsion loading*.

White Rose Research Online URL for this paper:  
<http://eprints.whiterose.ac.uk/99017/>

Version: Accepted Version

---

**Article:**

Maggiolini, E., Tovo, R., Susmel, L. et al. (2 more authors) (2016) Crack path and fracture analysis in FSW of small diameter 6082-T6 aluminium tubes under tension-torsion loading. *International Journal of Fatigue*, 92 (2). pp. 478-487. ISSN 0142-1123

<https://doi.org/10.1016/j.ijfatigue.2016.02.043>

---

Article available under the terms of the CC-BY-NC-ND licence  
(<https://creativecommons.org/licenses/by-nc-nd/4.0/>)

**Reuse**

Unless indicated otherwise, fulltext items are protected by copyright with all rights reserved. The copyright exception in section 29 of the Copyright, Designs and Patents Act 1988 allows the making of a single copy solely for the purpose of non-commercial research or private study within the limits of fair dealing. The publisher or other rights-holder may allow further reproduction and re-use of this version - refer to the White Rose Research Online record for this item. Where records identify the publisher as the copyright holder, users can verify any specific terms of use on the publisher's website.

**Takedown**

If you consider content in White Rose Research Online to be in breach of UK law, please notify us by emailing [eprints@whiterose.ac.uk](mailto:eprints@whiterose.ac.uk) including the URL of the record and the reason for the withdrawal request.



[eprints@whiterose.ac.uk](mailto:eprints@whiterose.ac.uk)  
<https://eprints.whiterose.ac.uk/>

Crack path and fracture analysis in FSW of small diameter 6082 aluminium tubes under tension-torsion loading

E Maggiolini <sup>1</sup>, R Tovo <sup>1</sup>, L Susmel <sup>2</sup>, M N James <sup>3,4</sup> and D G Hattingh <sup>4</sup>

**Abstract**

This paper reports part of the work done in a research project aimed at developing an optimised process to join 38 mm diameter tubes of 6082-T6 aluminium alloy using friction stir welding (FSW), and then to determine the fatigue performance under tension, torsion and tension-torsion loading conditions. The final outcome of the project is intended to be guidance for fatigue design of small diameter aluminium tubes joined by FSW, and this paper presents information on crack path and defects under the various loading conditions. Crack path analysis was performed using both low magnification stereo microscopy and scanning electron microscopy, in order to identify crack initiation sites, the direction of crack propagation and the interrelated influence of microstructure and weld geometry on the crack initiation path.

**Keywords**

Friction stir welding; multiaxial fatigue; tension-torsion; 6082-T6 aluminium; small diameter tube; crack path.

**Introduction**

Welding is the most common joining process in structural design and general manufacturing, and is statistically reliable provided that joint design adheres to codified guidelines. Nonetheless, cracking problems are often observed to be associated with the weld zone, arising from microstructural changes due to the weld thermal cycle, residual stresses induced by differential heating and cooling, and defects introduced in the weld zone either by local geometry changes (stress concentration points) or from the welding process (particularly in fusion welding, which is a casting process). Hence a major challenge faced in fatigue design is

---

<sup>1</sup> Department of Engineering, University of Ferrara, Ferrara, Italy  
<sup>2</sup> Department of Civil & Structural Engineering, University of Sheffield, Sheffield, England  
<sup>3</sup> School of Marine Science & Engineering, University of Plymouth, Plymouth, England  
<sup>4</sup> Department of Mechanical Engineering, Nelson Mandela Metropolitan University, Port Elizabeth, South Africa

1 that of determining an optimum welding process and parameters that leads to efficient and  
2 reliable joints. However, when deploying newer solid-state friction stir welding processes to  
3 innovative applications, e.g. joining of small diameter tubes such as might be used in structural  
4 design for ground vehicles, there are currently no agreed guidelines that can be applied to  
5 fatigue design. The overall objective in this research project was therefore the identification of  
6 suitable fatigue design techniques for small diameter friction stir welded (FSW) tubular  
7 structures. This paper reports that part of the project that was aimed at characterising crack  
8 initiation sites and the subsequent crack path.  
9

10 Friction stir welding is a solid-state process that was developed at TWI in Cambridge [1]) and it  
11 offers high quality welds [2], low residual stresses transverse to the weld joint [3], [4], high  
12 fatigue strength [5], a fine grained weld nugget compared with other welding techniques [6],  
13 along with minimal joint preparation and a low requirement for post-weld dressing.  
14 Disadvantages of the FSW technique include the keyhole left after tool withdrawal, the  
15 requirement for a large downwards forging force and rigid clamping along with a lower weld  
16 traverse rate than some fusion welding techniques (although FSW rates of 2 m/min have been  
17 reported [7]). FSW has therefore been deployed across many areas of manufacturing, including  
18 the space industry [7], ships [8], aircraft [9] and ground transportation [10].  
19

20 Whilst it is easy to join flat plate with FSW, it can be difficult to extend its applications to include  
21 tubes, in particular small diameter tubes, and other complex geometries. Friction stir welding of  
22 tubes has particular challenges in terms of pin plunge depth and support for the material during  
23 welding and also in terms of arranging tool pin retraction as a weld is completed, in a manner  
24 that does not to leave the typical plunge hole in the joint line. A friction stir welding process was  
25 specifically developed for this project at Nelson Mandela Metropolitan University in South Africa  
26 to join extruded 6082-T6 aluminium alloy tubes with an approximate outer diameter (OD) of 38  
27 mm and a wall thickness of approximately 3.5 mm (giving an inner diameter (ID) of some 31  
28 mm).  
29  
30  
31  
32  
33  
34  
35  
36  
37  
38  
39  
40  
41  
42  
43  
44  
45  
46  
47  
48  
49  
50  
51  
52  
53  
54  
55  
56  
57  
58  
59  
60  
61  
62  
63  
64  
65

1 An MTS I-STIR™ Process Development System provided the foundation for this work, which  
2 involved coupling a worm gear motor with a tube support system for the welding process, and  
3 integrating the drive system control with that of the I-STIR platform (see Figure 1). As noted  
4 above, it is important in FSW of small diameter tubes, where provision for run-on and run-off  
5 tabs cannot be provided, not to leave any hole in the joint line after extracting the tool at the end  
6 of the welding process; the resulting hole in the joint would act as a very significant weld defect,  
7 given the relative sizes of the tool pin, tube diameter and tube wall thickness. A tool with a self-  
8 retracting pin was therefore also designed and developed for this particular FSW application.  
9

10 This is one of very first applications of FSW to small diameter tubular geometries to be reported  
11 in the open literature. Peterson et al [11] filed a US patent application in 2011 for a process to  
12 friction stir weld casing and small diameter tubing or pipe, although they defined ‘small’ diameter  
13 as an ID  $\approx$  228 mm. Lammlein et al [12] have published work dealing with the development of a  
14 process for FSW of 6061-T6 aluminium tubes 107 mm in diameter and with a wall thickness of  
15 approximately 5.8 mm. Both of these cases deal with substantially larger diameters than the 38  
16 mm tube used in the present work and this smaller size was chosen to be representative of the  
17 dimensions that might be used in space frame chassis design for ground vehicles. Chen et al  
18 [13] have also published work on the development of a FSW process for joining 19 mm  
19 diameter pipes of 3003 aluminium alloy to pure copper with a 1 mm wall thickness. They made  
20 the welds on an adapted lathe and performed tensile tests but did not consider fatigue data.  
21  
22

23 In contrast, a wealth of data is available for FSW in plates and weld performance has been well  
24 characterised in terms of process optimisation and residual stresses [14], static and dynamic  
25 mechanical properties [15-16], the influence of weld tool travel speed [17] and weld thermal  
26 modelling [18-19].  
27  
28

### 29 **The welding process**

30 A number of individual tasks had to be accomplished with respect to process development,  
31 before the tube specimens required for the multiaxial fatigue testing could be manufactured in  
32  
33  
34  
35  
36  
37  
38  
39  
40  
41  
42  
43  
44  
45  
46  
47  
48  
49  
50  
51  
52  
53  
54  
55  
56  
57  
58  
59  
60  
61  
62  
63  
64  
65

1  
2 the number required for the test programme (circa 100) with confidence that their properties  
3 would be sufficiently consistent to provide reliable fatigue data. These major tasks included:

- 4  
5 a) To design and build the worm gear drive and clamping system for welding;  
6  
7  
8 b) Electronic integration of this drive into the control software of the I-STIR process  
9 development system;  
10  
11  
12 c) Design and validation of the retracting pin tool used in the welding process;  
13  
14  
15 d) Determination of suitable welding process parameters to achieve the required weld  
16 quality;  
17  
18  
19 e) Production of 200 mm long welded test specimens for initial microstructural and  
20 mechanical property characterisation of the joint.  
21  
22  
23  
24  
25

26 Figure 2 shows details of the clamping system and the various components are identified as  
27 given below:  
28  
29

- 30  
31 1. Precision locknut  
32  
33  
34 2. Fenlock cone clamp  
35  
36  
37 3. Flange connecting motor to tube drive shaft  
38  
39  
40 4. Support bearings  
41  
42  
43 5. Tube to shaft coupling  
44  
45  
46 6. Motor keyway lock bolt  
47  
48

49 The process of aligning the tubes and clamping them in position for welding is quite time-  
50 consuming and any extension of this process into industry would require an increased level of  
51 automation to be introduced into the process compared with this prototype process. Key issues  
52 in the clamping operation include achieving accurate alignment which is fundamental to  
53 achieving a high quality weld; heat retention during welding of multiple tube specimens, which  
54 makes it increasingly difficult to release the cone clamps (probably because of expansion of the  
55  
56  
57  
58  
59  
60  
61  
62  
63  
64  
65

1 threads on the release bolts which necessitated replacement of a number of these bolts during  
2 the production run of 100 specimens); difficulty in achieving an even clamping force on the  
3 tubes caused by differences in ID of the tubes and by different out-of-round measurements both  
4 of which lead to distortion of the tube during setup. The sequence of events during welding is  
5 outlined in Figure 3 and it should be noted that it was found necessary to machine the tube OD  
6 to 37.5 mm to improve the tube alignment during set-up.  
7  
8  
9  
10  
11  
12

13 The weld process used force control on a small diameter tool shoulder of 10 mm rotating at 600  
14 rpm, an optimised rotational tube feed rate of 50 mm/min, and a tool pitch angle of 2°. It was  
15 found necessary to weld the tube through a rotation of 720°, i.e. two complete revolutions, in  
16 order to achieve a good surface finish; the first pass improves the uniformity of shoulder contact  
17 and hence the second pass improves the surface finish. In optimising the tool geometry, the pin  
18 penetration depth was initially set to approximately 85% of the nominal tube wall thickness and  
19 the quality of the resulting weld was evaluated via metallographic examination after welding. A  
20 pin length of 2.45 mm was found to work very effectively with a plunge depth of 2.5 mm to  
21 ensure adequate shoulder contact. Figure 4 and the associated information on weld process  
22 parameters in Table 1 demonstrate the influence of the tool rotational feed rate, tool rotational  
23 speed and number of complete revolutions of the tube on the quality of weld surface finish,  
24 which is a key controlling factor in fatigue performance. Full details of the development and  
25 optimisation of the welding process will be reported elsewhere.  
26  
27  
28  
29  
30  
31  
32  
33  
34  
35  
36  
37  
38  
39  
40  
41  
42

43 One hundred fatigue specimens were manufactured by joining two 110 mm lengths of 6082-T6  
44 aluminium tube with friction stir welding, as shown in Figure 5. The chemical composition of this  
45 alloy is given in Table 2. Once the samples had been manufactured in South Africa, they were  
46 sent to the University of Sheffield and the University of Ferrara for the mechanical testing part of  
47 the programme. Tensile fatigue testing was carried out in Ferrara with a load ratios of  $R = 0.1$   
48 and  $R = -1$ , while torsion fatigue and biaxial tension-torsion testing were carried out in Sheffield  
49 with load ratios of  $R = 0$  and  $R = -1$ . The tensile fatigue testing used a 250kN MTS  
50 servohydraulic fatigue testing machine and a Schenk servohydraulic tension-torsion fatigue  
51  
52  
53  
54  
55  
56  
57  
58  
59  
60  
61  
62  
63  
64  
65

1 testing machine was used for the tension-torsion work. Biaxial fatigue testing used both in-  
2 phase (IPh) and out-of-phase (OPh) constant amplitude sinusoidal loading. Table 3 gives the  
3 relevant data on the testing programme where the biaxiality stress ratio  $\lambda = \frac{\sigma_a}{\tau_a}$ , with  $\sigma_a$  being  
4 the tensile stress amplitude and  $\tau_a$  is the torsional stress amplitude in the fatigue cycling, while  
5  $\Theta$  is the phase angle between tension and torsion loading.  
6  
7  
8  
9  
10  
11  
12

13 After testing, the fractured specimens were sent to the University of Plymouth for fractographic  
14 and metallographic analysis of the fracture surfaces and crack paths. This part of the work  
15 entailed acquiring data from light and scanning electron microscopy, polarised light  
16 metallography and electron backscatter diffraction of specific crack initiation regions. The aim  
17 was to develop a compendium of fractographs and crack initiation sites, along with relevant  
18 microstructural information, as underpinning information for the fatigue life prediction and  
19 improvement aspects of the project.  
20  
21  
22  
23  
24  
25  
26  
27  
28  
29  
30  
31  
32

### 33 **Monotonic mechanical properties**

34  
35 The tensile properties of a welded joint are a reasonable first order indicator of the joint quality  
36 and 'joint efficiency' (defined as the ratio of tensile strength of the weld to that of the parent  
37 plate) is often used to describe the mechanical performance of welded joints. In the present  
38 case the tensile strength was measured on complete tubes and on microtensile specimens.  
39 Tests on the microtensile specimens, with a cross-section of 2 mm by 3 mm (Figure 6) were  
40 intended as trials of the viability of using a Gatan Microtest 2000EW test module in a scanning  
41 electron microscope (SEM) whilst performing microstructural characterisation under load via  
42 electron backscatter diffraction (EBSD). Very consistent tensile strength values were recorded  
43 from both types of tensile test, and mechanical property data in tension and in torsion are  
44 shown in Table 4. The welded joint efficiency is 0.55; this value compares well with the figure of  
45 0.67 reported for FS welds in 3 mm thick plates of 6082-T6 [15]. The microtensile specimens  
46 were polished in order to observe where failure occurred and this was found to be in the weld  
47  
48  
49  
50  
51  
52  
53  
54  
55  
56  
57  
58  
59  
60  
61  
62  
63  
64  
65

1 zone on the tool retreating side. The tube specimens failed at the tool shoulder undercut on  
2 either the advancing or retreating sides of the weld, which represents a stress concentrating  
3 feature.  
4  
5

### 6 7 **Fatigue crack path analysis** 8

9  
10 Once the fatigue tests had been completed the tube specimens were pulled apart to reveal the  
11 fracture surfaces and an analysis of the crack initiation site and crack path was performed on  
12 each specimen. This entailed identifying and recording the test conditions for each specimen,  
13 determining whether the crack lay on the advancing or retreating side of the weld, or was in the  
14 weld itself, the circumferential position at which the crack had initiated relative to the stop-start  
15 position for those specimens where this was possible, recording the fractographic appearance  
16 of the crack using both low magnification light microscopy and scanning electron microscopy  
17 and, in certain cases, using optical metallography or electron backscatter diffraction to follow the  
18 crack path through the microstructure at the initiation site.  
19  
20  
21  
22  
23  
24  
25  
26  
27  
28

29  
30 To assist in this fractographic analysis, crack initiation sites were defined in terms of their  
31 angular position relative to the stop-start position in the weld, given as  $0^\circ$  in Figure 7 where the  
32 advancing side of the weld is towards the top in the figure, and the retreating side is towards the  
33 bottom. The procedure adopted in documenting the crack path and defects was to record the  
34 entire fracture surface using digital images and then to identify crack initiation points and any  
35 other interesting features for closer inspection using scanning electron microscopy. Crack  
36 initiation was primarily closely associated with the slight undercut at the edge of the weld zone  
37 arising from the tool shoulder, but could occur on either the advancing or retreating side of the  
38 weld, which exhibit individual variations in values of hardness and residual stress. Table 5  
39 gives the location of crack initiation for all the specimens tested in tensile fatigue. In the two  
40 specimens that were left intact (W117: 709,775 cycles and W121: 476,829 cycles) cracking had  
41 initiated along the middle plane of the weld zone and one specimen fractured through the  
42 middle of the weld (W118: 1,247,627 cycles). As is usually the case with welded specimens,  
43 the fatigue life can be quite variable at specific values of applied stress range and this reflects  
44  
45  
46  
47  
48  
49  
50  
51  
52  
53  
54  
55  
56  
57  
58  
59  
60  
61  
62  
63  
64  
65



1 the presence on the weld surface of tool marks (arising from the tool advance in each tool  
2 revolution), the tool shoulder undercut and any near-surface defects. In the majority of the  
3 specimens (58%) cracking initiated at the advancing side of the weld, at the retreating side in  
4 27% of the specimens and in other locations in 15% of specimens. It is likely that the slight  
5 increase often observed on the advancing side of the weld in the value of tensile residual stress  
6 in the direction transverse to a friction stir weld [4] underlies this predilection for crack initiation  
7 on the advancing side under a tensile load.  
8  
9

10  
11 Table 6 presents the data for the torsional specimens, and it should be noted that the torsional  
12 loading damages the fracture surfaces and usually makes impossible post-hoc determination of  
13 the crack initiation point around the circumference. The torsional data indicates a significant  
14 influence of both stress ratio  $R$  and shear stress amplitude on the position and crack path  
15 associated with crack initiation. Thus under torsional fatigue loading with  $R = 0$ , crack initiation  
16 occurred on the retreating side in all welds examined, whilst under reversed loading with  $R = -1$   
17 crack initiation predominantly occurs on the advancing side. Under torsional loading, at the two  
18 lowest shear stress ranges used in both  $R = 0$  and  $R = -1$  loading, the crack path does not  
19 follow the undercut zone at the sides of the weld, but instead shows a more classical shear  
20 crack initiation at an angle of approximately  $45^\circ$  (see the two images given in Figure 8).  
21  
22  
23  
24  
25  
26  
27  
28  
29  
30  
31  
32  
33  
34  
35  
36  
37  
38  
39  
40  
41

42 The fatigue data and information on initiation location is given in Table 7 for the in-phase and  
43 out-of-phase tension-torsion testing. It is clear that cracks can initiate with approximately equal  
44 facility on either the advancing or retreating side of the weld which implies that the local  
45 multiaxial strain state is more important than the effects of hardness changes or residual stress  
46 induced in the friction stir welding process. An interesting observation is that in a number of  
47 tests the crack moved from the advancing to the retreating side during growth although this  
48 does not seem to have any relationship with load parameters (Figure 9). In the case of the  
49 torsion specimens, multiple crack initiation sites along the retreating side of the weld were  
50 observed under  $R = 0$  loading across the range of applied stress values, e.g. T23 (92 MPa), T16  
51  
52  
53  
54  
55  
56  
57  
58  
59  
60  
61  
62  
63  
64  
65

1 (67 MPa). Figures 10 and 11 show examples of such multiple initiation sites. It can also be  
2 observed that the number of cracks initiated appears to increase as the applied shear stress  
3 decreases and hence the fatigue life increases. A problem with those specimens that displayed  
4 multiple crack initiation but that did not completely fracture, was that the primary initiation site  
5 could not be determined because of the difficulty in separating the specimen at the appropriate  
6 place, e.g. Figure 11.  
7  
8  
9  
10  
11  
12  
13  
14

15 Certain of the in-phase tension-torsion specimens, e.g. IPh8 and the torsion specimens, e.g. T4  
16 exhibited crack initiation coincident with the stop-start position, as shown in Figures 12 and 8a,  
17 respectively. Torsion fatigue specimens occasionally showed classic shear crack bifurcation  
18 under torsion loading with  $R = -1$  and Figure 13 shows an example of this type of cracking  
19 where crack initiation has also occurred at the stop-start position. Table 8 summarises the crack  
20 location information for all specimens and shows that for the 62 specimens where this  
21 information was obtained, 50% of cracks initiated at the advancing side, 39% at the retreating  
22 side and 11% at other positions in the weld.  
23  
24  
25  
26  
27  
28  
29  
30  
31  
32  
33  
34

35 In specimens that had not experienced significant surface damage during torsion or reversed  
36 tension loading, it was generally straightforward to locate the primary crack initiation site,  
37 although where multiple cracks of similar size had occurred the fracture surfaces could not be  
38 easily exposed. Crack initiation generally occurred at the surface undercut caused by the tool  
39 shoulder at either advancing or retreating sides of the weld, and this is demonstrated in Figure  
40 14 (tensile fatigue specimen W121) where ratchet marks are present on the fracture surface  
41 that correspond with the tool shoulder marks, and a small fatigue crack has initiated between  
42 these marks (indicated with an arrow). Occasional wormhole defects, which are a relatively  
43 common form of FSW defect, were observed on the fracture surface (see the tensile fatigue  
44 specimen W117 shown in Figure 15). The mechanism by which such defects are formed  
45 reflects the details of the plastic mixing process during friction stir welding and has been  
46 described in reference [20] which also summarises other forms of FSW defect.  
47  
48  
49  
50  
51  
52  
53  
54  
55  
56  
57  
58  
59  
60  
61  
62  
63  
64  
65

1  
2 The specimens tested under biaxial tension-torsion loading were more interesting, as although  
3 parts of the fracture surfaces had suffered damage from contact during crack growth, certain  
4 specimens indicated that although the primary crack had initiated at the outside of the tube (in-  
5 phase tension-torsion specimen IPh2 - Figure 16), smaller secondary cracks had sometimes  
6 formed at the inner surface later in the fatigue process (IPh2 - Figure 17). Figure 17 also  
7 demonstrates that the formation of this secondary crack occurred at a late stage in the fatigue  
8 process because the fracture surface fairly quickly starts to reflect the underlying 'onionskin'  
9 structure in the weld zone, reflecting high levels of applied load and hence high growth rates.  
10 Where fracture surfaces were undamaged, the mechanism of fatigue crack growth could be  
11 observed to be ductile striation formation as shown in Figure 18 (tension fatigue specimen  
12 W130).  
13  
14  
15  
16  
17  
18  
19  
20  
21  
22  
23  
24  
25  
26  
27  
28

## 29 **Metallography**

30  
31 Ultimately, it is intended to evaluate the microstructure and crack path using polarised light  
32 microscopy and electron back-scatter diffraction (EBSD) in a scanning electron microscope, but  
33 this work has not yet been completed. Figure 19 shows a polarised light metallographic  
34 montage that shows the complete weld zone for the torsion specimen T6. Individual regions of  
35 the microstructure can be examined at higher magnification (Figure 21). This can also be done  
36 for cracked specimens, although it entails polishing back the surface to provide a flat region for  
37 etching, and the etching process trends to attack crack edges preferentially. This is where  
38 EBSD has a distinct advantage over light microscopy, although it also requires a flat surface in  
39 order to adequately index the microstructure and the plastic deformation that surrounds cracks  
40 can therefore lead to a loss of resolution. Figure 21 shows a typical EBSD image of the crack  
41 tip region in specimen T6 at 2,000x magnification and a fairly good resolution of the  
42 microstructure has been obtained to within a distance of about 10  $\mu\text{m}$  from the crack edge. The  
43 interesting point that this image does not make clear is whether grain refinement has occurred  
44 due to plastic strain in the zone near to the crack tip, or whether this apparent effect merely  
45  
46  
47  
48  
49  
50  
51  
52  
53  
54  
55  
56  
57  
58  
59  
60  
61  
62  
63  
64  
65

1 reflects a loss of data in this heavily deformed region. The EBSD image shown in Figure 22  
2 contains the crack initiation region in specimen IPh-1, looking at the crack growing down  
3 through the tube thickness. The crack has initiated and grown along the tool shoulder undercut  
4 on the advancing side of the weld and the grain structure reflects the heat-affected zone (HAZ)  
5 on the parent plate side of the crack. The direction of crack growth through the tube thickness  
6 is shown by the arrows in the top image.  
7  
8  
9  
10  
11  
12  
13

## 14 **Conclusions**

15  
16 The work described in this paper has summarised some of the crack path observations made  
17 during a major three-year research project that has had four international partners working in  
18 synergy on developing both a new FSW process for joining small diameter tubes and on  
19 characterising the fatigue performance of the tubes under tension, torsion and biaxial tension-  
20 torsion loading. In this project the first year was spent developing the FSW technology to  
21 successfully join small diameter tubes and optimising the process conditions to achieve  
22 consistent mechanical properties (Nelson Mandela Metropolitan University). The next 18  
23 months entailed a complementary programme of fatigue testing at Universities in two countries  
24 (Universities of Sheffield and Ferrara), with the fatigued specimens finally being delivered to the  
25 University of Plymouth in the last 6 months of the project for fractographic and metallographic  
26 characterisation.  
27  
28  
29  
30  
31  
32  
33  
34  
35  
36  
37  
38  
39  
40

41 It can be concluded that:

- 42 1. Small diameter tubes can be successfully welded and can deliver similar values of joint  
43 efficiency (0.55) to those observed with flat plates joined by FSW. The main problems  
44 arise from designing a process with a retractable tool, obtaining an optimised process,  
45 alignment of out-of-round tubes with small wall thickness and heating of the clamping  
46 arrangement during a production run.  
47  
48  
49  
50  
51  
52  
53  
54
- 55 2. The welding process would need to be automated in order to be taken out into industry,  
56 but the pilot project has indicated considerable potential for deployment in the ground  
57 vehicle industry.  
58  
59  
60  
61  
62  
63  
64  
65

- 1  
2  
3  
4  
5  
6  
7  
8  
9  
10  
11  
12  
13  
14  
15  
16  
17  
18  
19  
20  
21  
22  
23  
24  
25  
26  
27  
28  
29  
30  
31  
32  
33  
34  
35  
36  
37  
38  
39  
40  
41  
42  
43  
44  
45  
46  
47  
48  
49  
50  
51  
52  
53  
54  
55  
56  
57  
58  
59  
60  
61  
62  
63  
64  
65
3. The loading conditions do not affect the location of crack initiation in any significant way in terms of fatigue design, although small variations were observed in, for example, tensile fatigue at stress ratios of either 0.1 or -1. Variations were limited to a move from advancing to retreating side of the weld with crack initiation still generally confined to the undercut groove that occurs at the edge of the tool shoulder.

### Acknowledgment

Support for this work from the Leverhulme Trust through the award of International Network Grant IN-2012-107 is gratefully acknowledged.

### References

- [1] Thomas W.M., Nicholas E.D., Needham J.C., Murch M.G., Temple-Smith P., Dawes C.J.: "Friction welding.", (1991), PCT/GB92/02203.
- [2] Hussein, S.A., Tahir, A.S.M., Hadzley, A.B.: "Characteristics of aluminum-to-steel joint made by friction stir welding: A review", (2015) *Materials Today Communications*, Vol. 5, pp. 32-49.
- [3] Ji, P., Yang, Z., Zhang, J., Zheng, L., Ji, V., Klosek, V.: "Residual stress distribution and microstructure in the friction stir weld of 7075 aluminum alloy", (2015) *Journal of Materials Science*, Vol. 50, 22, pp. 7262-7270.
- [4] James, M.N., Hughes, D.J., Hattingh, D.G., Bradley, G.R., Mills, G. and Webster, P.J. (2004), "Synchrotron diffraction measurement of residual stresses in friction stir welded 5383-H321 aluminium butt joints and their modification by fatigue cycling", *Fatigue and Fracture of Engineering Materials and Structures*, Vol. 27 pp.187-202.
- [5] Polezhayeva H., Toumpis A.I., Galloway A.M., Molter L., Ahmad B., Fitzpatrick M.E.: "Fatigue performance of friction stir welded marine grade steel", (2015) *International Journal of Fatigue*, Vol. 81, pp. 162-170.
- [6] Krasnowski, K., Hamilton, C. and Dymek, S.: "Influence of tool shape and weld configuration on microstructure and mechanical properties of the AL 6082 alloy FSW joints", (2015) *Archives of Civil and Mechanical Engineering*, Vol. 15 pp. 133-141.
- [7] Shah, S., and Tosunoglu, S.: "Friction stir welding: current state of the art and future prospects", (2012) 16<sup>th</sup> World Multi-Conference on Systemics, Cybernetics and Informatics, Orlando, FL, July 17-20, 2012.

- 1  
2  
3  
4  
5  
6  
7  
8  
9  
10  
11  
12  
13  
14  
15  
16  
17  
18  
19  
20  
21  
22  
23  
24  
25  
26  
27  
28  
29  
30  
31  
32  
33  
34  
35  
36  
37  
38  
39  
40  
41  
42  
43  
44  
45  
46  
47  
48  
49  
50  
51  
52  
53  
54  
55  
56  
57  
58  
59  
60  
61  
62  
63  
64  
65
- [8] Kolligan, K. J.: "Friction stir welding for ship construction", (2004) Article prepared under contract N0014-06-D-0048 for the Office of Naval Research, by Concurrent Technologies Corporation, Harrisburg, PA, 2004.
  - [9] Burford, D., Widener, C. and Tweedy, B.: "Advances in friction stir welding for aerospace application", *Airframer*, Issue 14, pp. 3-7, November (2006), Proceedings of the 6<sup>th</sup> AIAA Aviation Technology, Integration and Operations Conference, Wichita, Kansas, September 25-27, 2006.
  - [10] Nicholas, W. M. Thomas and E. D.: "Friction stir welding for the transportation industries", (1997) *Materials and Design*, Vol. 18, Nos. 4/6, pp. 269-273.
  - [11] Peterson, J., Hall, J., Steel, R.J., Babb, J., Collier, M. and Packer, S.M. : "Out of position friction stir welding of casing and small diameter tubing or pipe, (2011) Patent Application WO 2011053361 A2, May 2011.
  - [12] Lammlein, D.H., Gibson, B.T., DeLapp, D.R., Cox, C., Strauss, A.M. and Cook, G.E.: "Friction stir welding of small diameter pipe: an experimental and numerical proof of concept for automation and manufacturing", (2012) Proceedings of the Institution of Mechanical Engineers, Part B: Journal of Engineering Manufacture, Vol. 226 no. 3 pp. 383-398.
  - [13] Binxi Chen, Ke Chen, Wei Hao, Zhiyuan Liang, Junshan Yao, Lanting Zhang and Aidang Shan: "Friction stir welding of small-dimension Al3003 and pure Cu pipes, (2015) Journal of Materials Processing Technology, 223 pp. 48-57.
  - [14] H. Lombard, D.G. Hattingh, A. Steuwer and M.N. James: "Effect of process parameters on the residual stresses in AA 5083-H321 friction stir welds, (2009) *Materials Science and Engineering A* 501 pp. 119-124.
  - [15] Moreira, P.M.G.P., Santos, T., Tavares, S.M.O., Richter-Trummer, V., Vilaça, P. and de Castro, P.M.S.T.: "Mechanical and metallurgical characterization of friction stir welding joints of AA6061-T6 with AA6082-T6", (2009), *Materials and Design*, Vol. 30, pp. 180-187.
  - [16] Liu, H.J., Fujii, H., Maeda, M., Nogi, K.: "Tensile properties and fracture locations of friction-stir-welded joints of 2017-T351 aluminum alloy", (2003), *Journal of Materials Processing Technology*, Vol. 142, Issue 3, pp. 692–696.
  - [17] James, M.N., Hattingh, D.G. and Bradley, G.R.: "Weld tool travel speed effects on fatigue life of friction stir welds in 5083 aluminium", (2003) *International Journal of Fatigue*, 25 pp. 1389-1398.
  - [18] Pal, S. and Phaniraj, M.P.: "Determination of heat partition between tool and workpiece during FSW of SS304 using 3D CFD modelling", (2015) *Journal of Materials Processing Technology*, Vol. 222 pp. 280-286.

- 1  
2  
3  
4  
5  
6  
7  
8  
9  
10  
11  
12  
13  
14  
15  
16  
17  
18  
19  
20  
21  
22  
23  
24  
25  
26  
27  
28  
29  
30  
31  
32  
33  
34  
35  
36  
37  
38  
39  
40  
41  
42  
43  
44  
45  
46  
47  
48  
49  
50  
51  
52  
53  
54  
55  
56  
57  
58  
59  
60  
61  
62  
63  
64  
65
- [19] Buglioni, L., Tufaro, L.N. and Svoboda, H.G.: "Thermal cycles and residual stresses in FSW of aluminium alloys: experimental measurements and numerical models, (2015) Procedia Materials Science, Vol. 9 pp.87-96.
- [20] M.N.James, G.R. Bradley, H. Lombard and D.G. Hattingh: "The relationship between process mechanisms and crack paths in friction stir welded 5083-H321 and 5383-H321 aluminium alloys", Fatigue and Fracture of Engineering Materials and Structures, Vol. 28 pp.245-256.

Table 1 Weld process parameters used to make the trial welds shown in Figure 4.

Weld	Feedrate	Tool rpm	Total rotational angle
1	100 mm/min	600	360°
4	100 mm/min	800	360°
3	100 mm/min	800	720°
2	50 mm/min	800	720°

Table 2 Chemical composition of the 6082 aluminium alloy.

	Mg	Si	Mn	Fe	Zn	Cu	Ti	Cr	Al
<b>Specification</b>	0.60- 1.20	0.70- 1.30	0.40- 1.00	0.50	0.20	0.10	0.10	0.25	Balance
<b>Tube Alloy</b>	0.647	0.988	0.526	0.222	0.021	0.034	0.012	0.006	Balance



Table 3 Summary of the fatigue testing parameters including the biaxiality ratio  $\lambda$ .

Test	Number of samples	$\lambda$	R	$\theta^\circ$
A	10	$\infty$	0.1	-
B	9	$\infty$	-1	-
C	10	0	0.1	-
D	14	0	-1	-
E	7	1.73	0.1	0
F	7	1	0.1	0
G	8	1.73	-1	0
H	7	1	-1	0
I	7	1.73	-1	90
L	4	1	0	90
M	7	1.73	0	90

Table 4 Tensile and torsional strength data for the welded 6082-T6 tubes. Superscript 1 indicates microtensile data and superscript 2 relates to complete tube tests.

<b>Parent plate<sup>1</sup></b>	Tension	303 MPa
<b>Weld zone<sup>1</sup></b>	Tension	169 MPa
<b>Weld zone<sup>2</sup></b>	Tension	168 MPa
<b>Weld zone<sup>2</sup></b>	Torsion	118 MPa

Table 5 Crack initiation location in the tensile fatigue specimens, defined in terms of their angle from the stop-start position and the position in the weld zone.

Load ratio	Specimen	$\Delta\sigma$ (MPa)	Cyclic Life	Crack initiation	$\alpha^\circ$
<b>R = 0.1</b>	W119	154.4	17,200	Advancing side	-135
	W111	154.4	19,763	Double location	160
	W127	138.9	81,298	Double location	30
	W129	102.9	37,991	Advancing side	-110
	W128	102.9	67,970	Advancing side	1
	W115	102.9	697,953	Advancing side	89
	W114	92.6	463,257	Advancing side	-95
	W121	92.6	476,829	Not determined	
	W116	92.6	2,000,000	Run out	
	W125	82.4	2,000,000	Run out	
<b>R = -1</b>	W122	82.3	96,400	Advancing side	20
	W123	77.2	2,000,000	Run out	
	W124	61.7	466,154	Double location	-40
	W130	56.6	222,671	Middle	-75
	W117	56.6	709,775	Not separated	0
	W120	56.6	1,167,540	Not separated	0
	W113	56.6	2,000,000	Run out	
	W118	51.5	1,247,627	Middle	-45
	W112	51.5	2,000,000	Run out	

Table 6 Crack initiation location in the torsional fatigue specimens, defined in terms of the position in the weld zone.

Load ratio	Specimen	$\tau_a$ (MPa)	Cyclic Life	Crack initiation
<b>R = 0</b>	T17	100	8,764	Retreating side
	T18	100	24,610	Retreating side
	T23	91.6	208,575	Multiple sites on retreating side
	T24	91.6	275,002	Not determined
	T13	83.3	318,930	Multiple sites on retreating side
	T14	83.3	347,127	Not determined
	T15	75	427,865	Not determined
	T19	75	522,030	Two sites on retreating side
	T16	66.6	1,071,840	Multiple sites on retreating side
	T20	66.6	2,000,000	Not determined
<b>R = -1</b>	T11	133.2	2,053	Retreating side
	T22	133.2	652	Advancing side
	T12	116.6	31,589	Advancing side
	T21	116.6	11,941	Advancing side
	T1	111.6	1,430	Not determined
	T8	100	275,020	Not determined
	T9	100	155,896	Advancing side
	T10	100	917,913	Advancing side
	T2	83.4	56,326	Advancing side
	T6	83.4	1,726,450	Stop-start position longitudinally
	T7	83.4	601,946	Advancing side
	T4	75	1,304,324	Advancing side
	T5	75	1,664,764	Advancing side
T3	66.6	2,000,000	Not determined	

1  
2  
3  
4  
5  
6  
7  
8  
9  
10  
11  
12  
13  
14  
15  
16  
17  
18  
19  
20  
21  
22  
23  
24  
25  
26  
27  
28  
29  
30  
31  
32  
33  
34  
35  
36  
37  
38  
39  
40  
41  
42  
43  
44  
45  
46  
47  
48  
49

Table 7 Crack initiation location in the tension-torsional fatigue specimens, defined in terms of the position in the weld zone.

Specimen	$\sigma_a$ (MPa)	$\tau_a$ (MPa)	R	$\Theta^\circ$	$\lambda$	Cyclic Life	Crack Initiation
IPh-1	47.4	27.4	-1	0	1.73	47,641	Advancing side
IPh-2	47.4	27.4	-1	0	1.73	139,861	Advancing side
IPh-3	39.5	22.8	-1	0	1.73	171,506	Retreating side
IPh-4	39.5	22.8	-1	0	1.73	369,237	Advancing to Retreating
IPh-5	33	19	-1	0	1.73	355,728	Not determined
IPh-6	33	19	-1	0	1.73	932,288	Retreating side
IPh-7	33	19	-1	0	1.73	513,782	Not determined
IPh-8	33	19	-1	0	1.73	623,187	Stop-start
IPh-9	39.5	39.5	-1	0	1	160,391	Retreating side
IPh-10	39.5	39.5	-1	0	1	47,967	Advancing side
IPh-11	34.3	34.3	-1	0	1	358,240	Not determined
IPh-12	34.3	34.3	-1	0	1	533,508	Advancing side
IPh-13	30.3	30.3	-1	0	1	592,342	Not determined
IPh-14	30.3	30.3	-1	0	1	650,684	Advancing side
IPh-15	30.3	27.4	-1	0	1.17	148,831	Retreating side
IPh-23	39.5	22.8251	-1	90	1.73	173,954	Retreating side
IPh-24	32.9	19	-1	90	1.73	2,000,000	Not determined
IPh-25	33	19	-1	90	1.73	139,484	Retreating side
IPh-26	39.5	22.8	-1	90	1.73	44,499	Weld zone

1  
2  
3  
4  
5  
6  
7  
8  
9  
10  
11  
12  
13  
14  
15  
16  
17  
18  
19  
20  
21  
22  
23  
24  
25  
26  
27  
28  
29  
30  
31  
32  
33  
34  
35  
36  
37  
38  
39  
40  
41  
42  
43  
44  
45  
46  
47  
48  
49

IPh-27	33	19	-1	90	1.73	46,086	Weld zone
IPh-28	33	19	-1	90	1.73	857,580	Not determined
IPh-29	35.6	20.5	-1	90	1.73	686,557	Advancing side
IPh-30	30.3	30.3	0	0	1	236,518	Advancing to Retreating
IPh-31	25	25	0	0	1	175,164	Advancing to Retreating
IPh-32	25	25	0	0	1	170,009	Retreating side
IPh-33	21	21	0	0	1	273,482	Retreating side
IPh-34	18.5	18.5	0	0	1	857,370	Retreating side
IPh-35	18.5	18.5	0	0	1	548,537	Weld zone
IPh-36	15.8	15.8	0	0	1	1,351,096	Not determined
IPh-16	33	19	0	0	1.73	205,952	Retreating side
IPh-17	30.3	17	0	0	1.73	118,631	Retreating side
IPh-18	18.5	10.6	0	0	1.73	2,000,000	Not determined
IPh-19	47.4499	27.4	0	0	1.73	25,614	Retreating side
IPh-20	23.7	13.7	0	0	1.73	501,988	Advancing to Retreating
IPh-21	21	12.2	0	0	1.73	891,341	Advancing to Retreating
IPh-22	23.7	13.7	0	0	1.73	2,000,000	Not determined
OoPh-37	33.0	19.0	0	90	1.73	98,938	Retreating side
OoPh-38	29.0	16.7	0	90	1.73	224,230	Retreating side
OoPh-39	23.7	13.7	0	90	1.73	2,000,000	Not determined
OoPh-40	33.0	19.0	0	90	1.73	38,084	Advancing side
OoPh-41	29.0	16.7	0	90	1.73	121,400	Advancing side

1  
2  
3  
4  
5  
6  
7  
8  
9  
10  
11  
12  
13  
14  
15  
16  
17  
18  
19  
20  
21  
22  
23  
24  
25  
26  
27  
28  
29  
30  
31  
32  
33  
34  
35  
36  
37  
38  
39  
40  
41  
42  
43  
44  
45  
46  
47  
48  
49

OoPh-42	23.7	13.7	0	90	1.73	2,000,000	Not determined
OoPh-43	26.4	15.2	0	90	1.73	745,539	Advancing side
OoPh-44	29.0	29.0	0	90	1.00	34,544	Retreating side
OoPh-45	21.1	21.1	0	90	1.00	2,000,000	Not determined
OoPh-46	26.4	26.4	0	90	1.00	80,612	Not determined
OoPh-47	25.0	25.0	0	90	1.00	945,586	Not determined

Table 8 Summary of the crack location information for all specimens, in terms of initiating at either the advancing or retreating side of the weld.

	Tensile	Torsion	In Phase	Out Of Phase	Sum
<b>Advancing side</b>	8	9	11	3	<b>31</b>
<b>Retreating side</b>	2	7	12	3	<b>24</b>
<b>Other</b>	2	1	4	0	<b>7</b>
<b>Not determined</b>	6	7	9	5	<b>27</b>

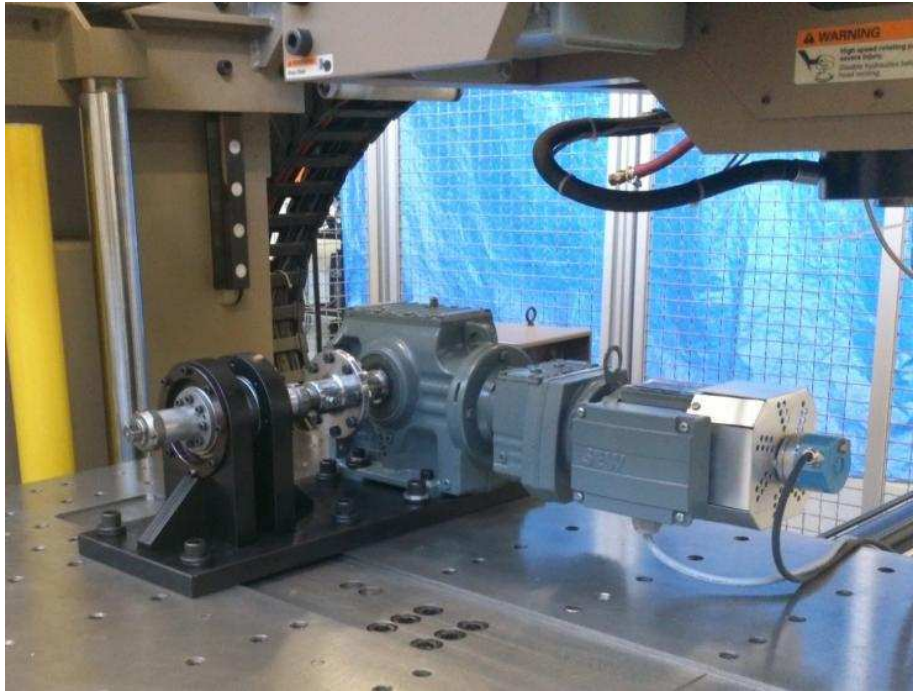


Figure 1 Illustration of a tube specimen in position ready to be welded.

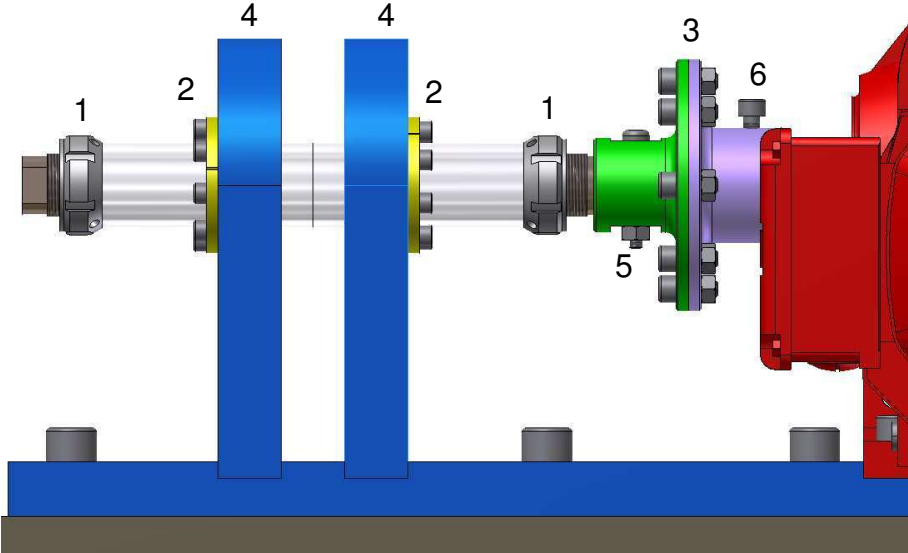


Figure 2 Schematic diagram showing the various components in the tube clamping system.

1  
2  
3 **Weld Sequence**

- 4  
5  
6  
7  
8  
9  
10  
11  
12  
13  
14  
15  
16  
17  
18  
19  
20  
21  
22  
23  
24
1. Pin moves toward weld centreline
  2. Pin touches tube for zero reference of plunge depth
  3. Start spindle rotation
  4. Plunge pin and shoulder
  5. Ensure shoulder in contact with pipe
  6. Initiate pipe rotation
  7. Rotate pipe 720° to achieve good surface finish (2 full revolutions)
  8. Initiate pin retraction after 630° rotation keeping pipe rotating to eliminate exit hole
  9. Retract shoulder



25 Figure 3 Sequence of events required in making a sound FS weld in the 6082-T6  
26 aluminium tubes.  
27  
28  
29  
30



57 Figure 4 Influence of the weld process parameters of plunge depth, rotational feed rate  
58 and tool rotational speed on the quality of weld surface finish.  
59  
60  
61  
62  
63  
64  
65



1  
2  
3  
4  
5  
6  
7  
8  
9  
10  
11  
12  
13  
14  
15  
16  
17  
18  
19  
20  
21  
22  
23  
24  
25  
26  
27  
28  
29  
30  
31  
32  
33  
34  
35  
36  
37  
38  
39  
40  
41  
42  
43  
44  
45  
46  
47  
48  
49  
50  
51  
52  
53  
54  
55  
56  
57  
58  
59  
60  
61  
62  
63  
64  
65

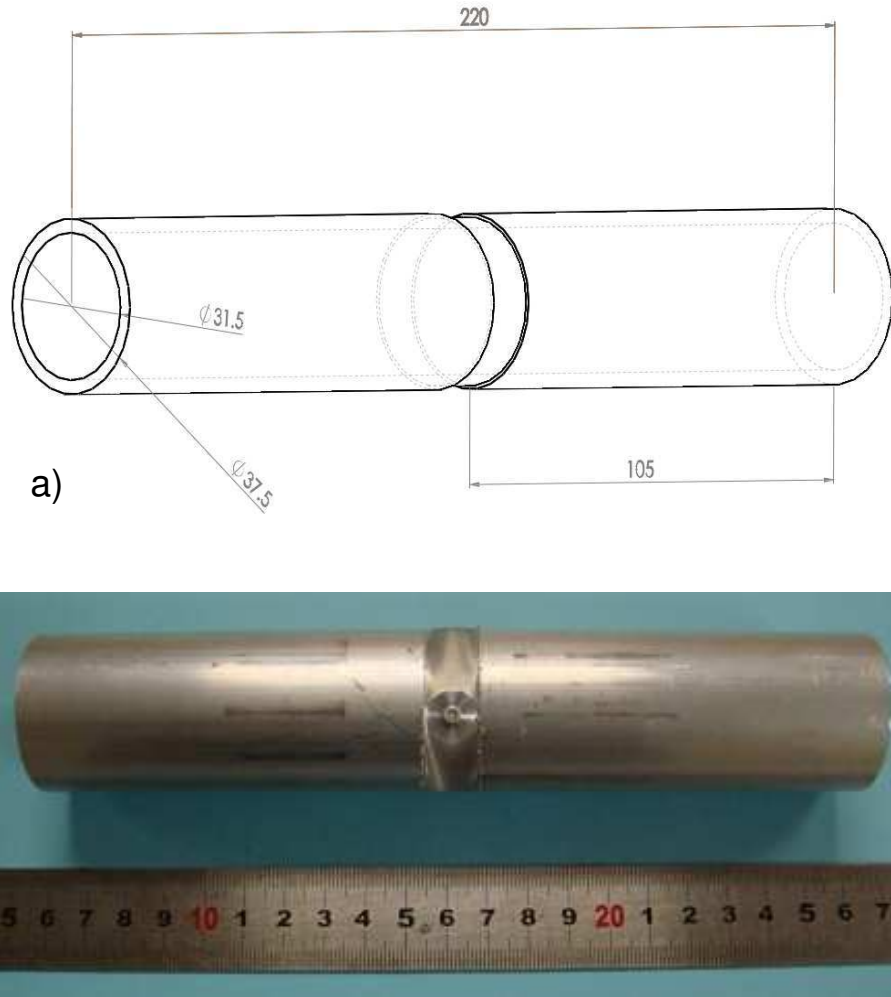


Figure 5 a) Approximate dimensions of the tubular fatigue specimens. b) Image showing a typical welded specimen.

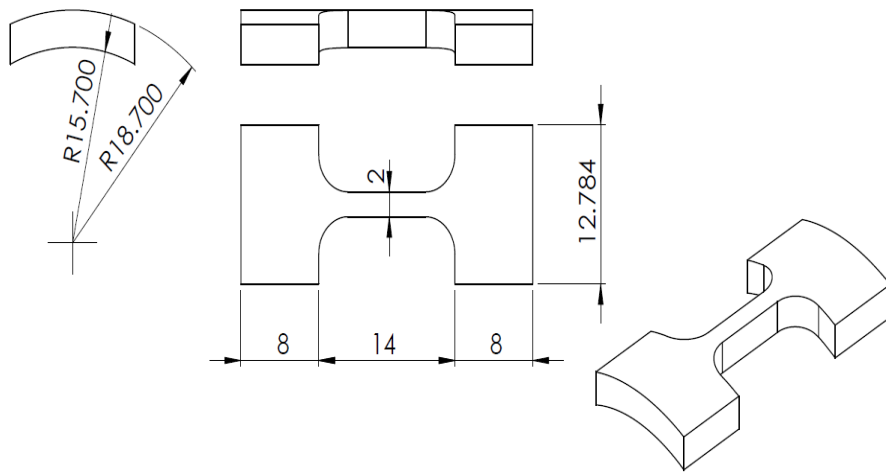


Figure 6 Microtensile specimen geometry; the curved surface requires support during clamping and testing.

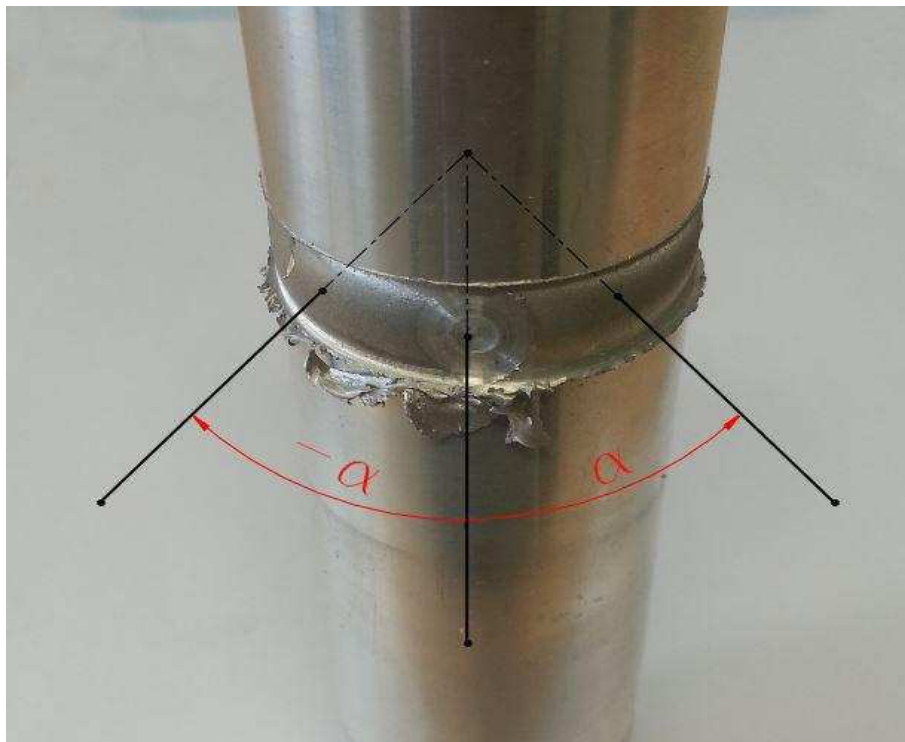


Figure 7 Coordinate system used to define the crack initiation sites.

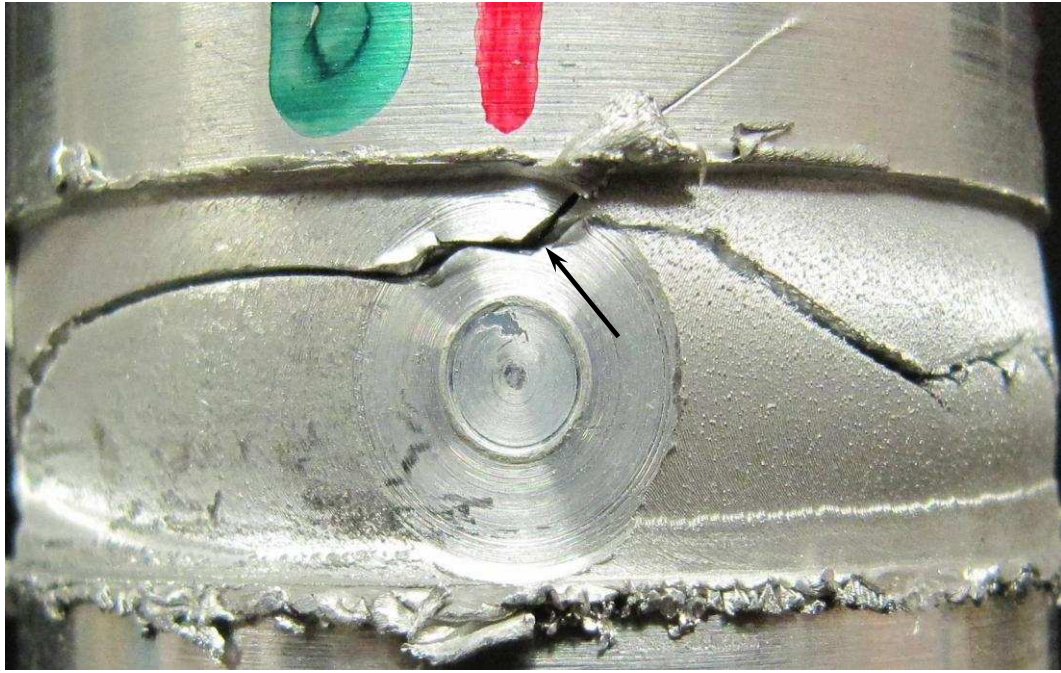


Figure 8a Crack initiation site (marked with arrow) in specimen T4 tested in torsion at  $R = -1$  with a shear stress amplitude of 75 MPa.



Figure 8b Crack initiation site in specimen T22 tested in torsion at  $R = -1$  with a shear stress amplitude of 133 MPa. The crack runs around the undercut groove on the advancing side of the weld. This is the most common mode of failure in both tension and torsion fatigue specimens.

1  
2  
3  
4  
5  
6  
7  
8  
9  
10  
11  
12  
13  
14  
15  
16  
17  
18  
19  
20  
21  
22  
23  
24  
25  
26  
27  
28  
29  
30  
31  
32  
33  
34  
35  
36  
37  
38  
39  
40  
41  
42  
43  
44  
45  
46  
47  
48  
49  
50  
51  
52  
53  
54  
55  
56  
57  
58  
59  
60  
61  
62  
63  
64  
65



Figure 9 In-phase tension-torsion fatigue test (IPh21) showing that the crack has initiated along the tool shoulder groove on the retreating side and then moved across to the advancing side of the weld.

1  
2  
3  
4  
5  
6  
7  
8  
9  
10  
11  
12  
13  
14  
15  
16  
17  
18  
19  
20  
21  
22  
23  
24  
25  
26  
27  
28  
29  
30  
31  
32  
33  
34  
35  
36  
37  
38  
39  
40  
41  
42  
43  
44  
45  
46  
47  
48  
49  
50  
51  
52  
53  
54  
55  
56  
57  
58  
59  
60  
61  
62  
63  
64  
65

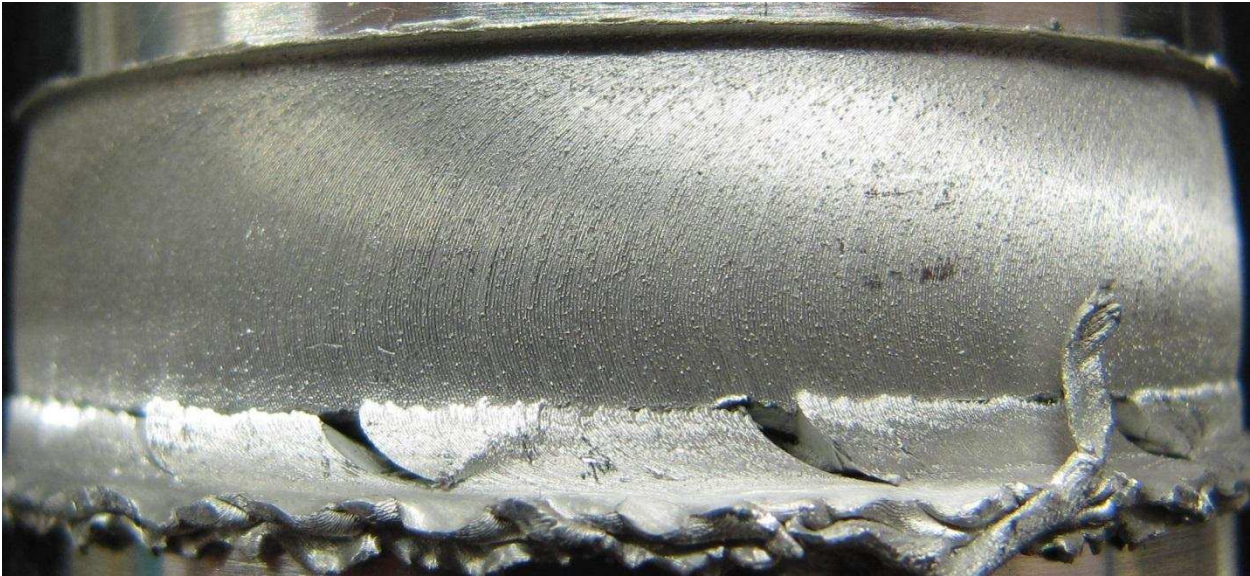


Figure 10 Multiple crack initiation sites observed in torsion fatigue at  $R = 0$ . This image shows specimen T23.

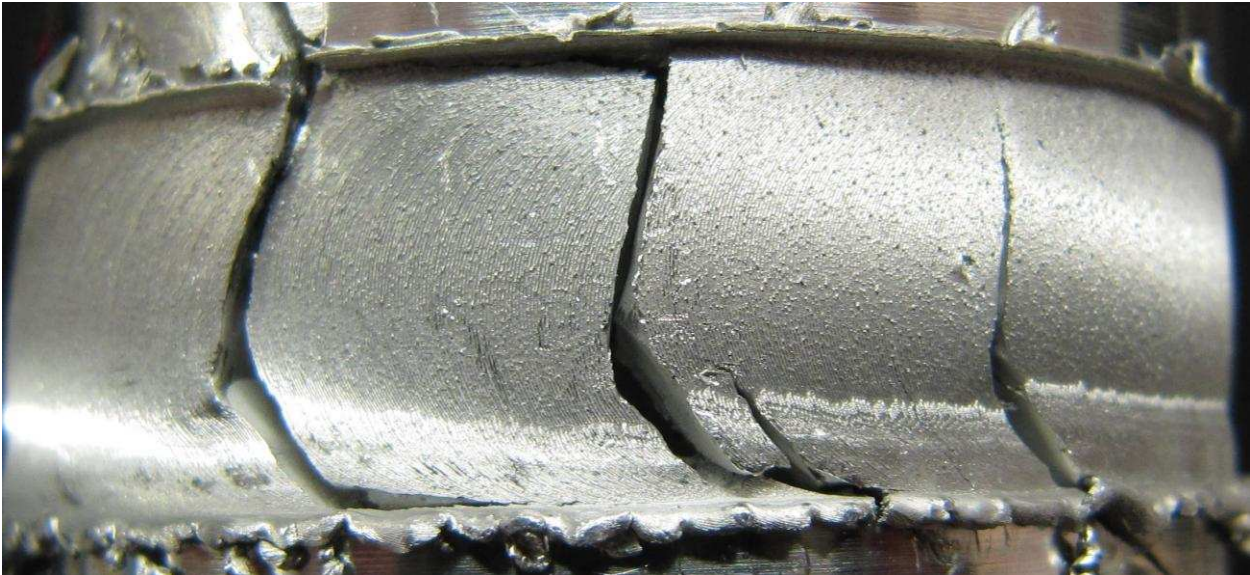
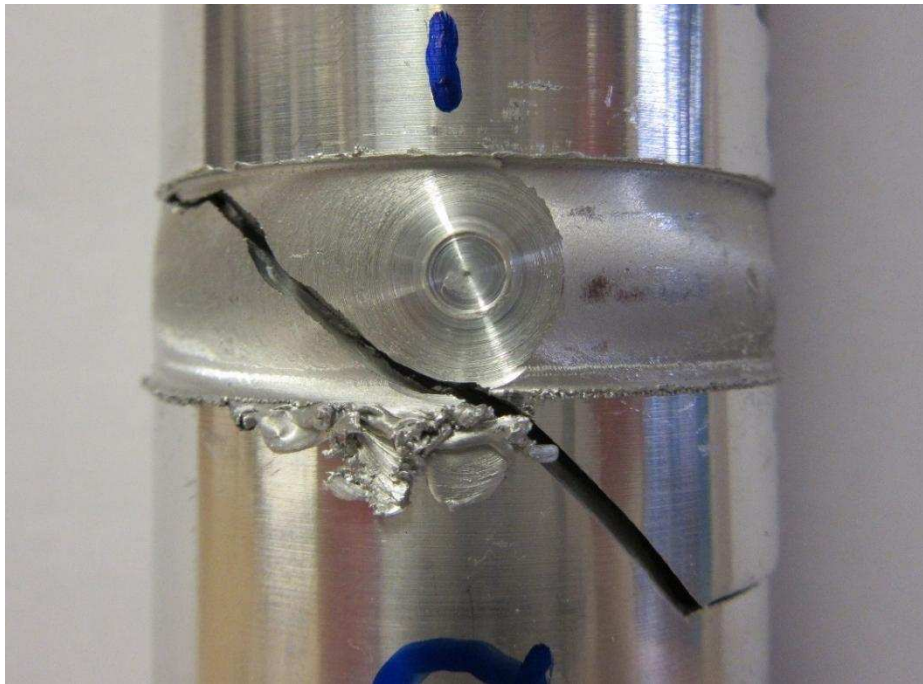
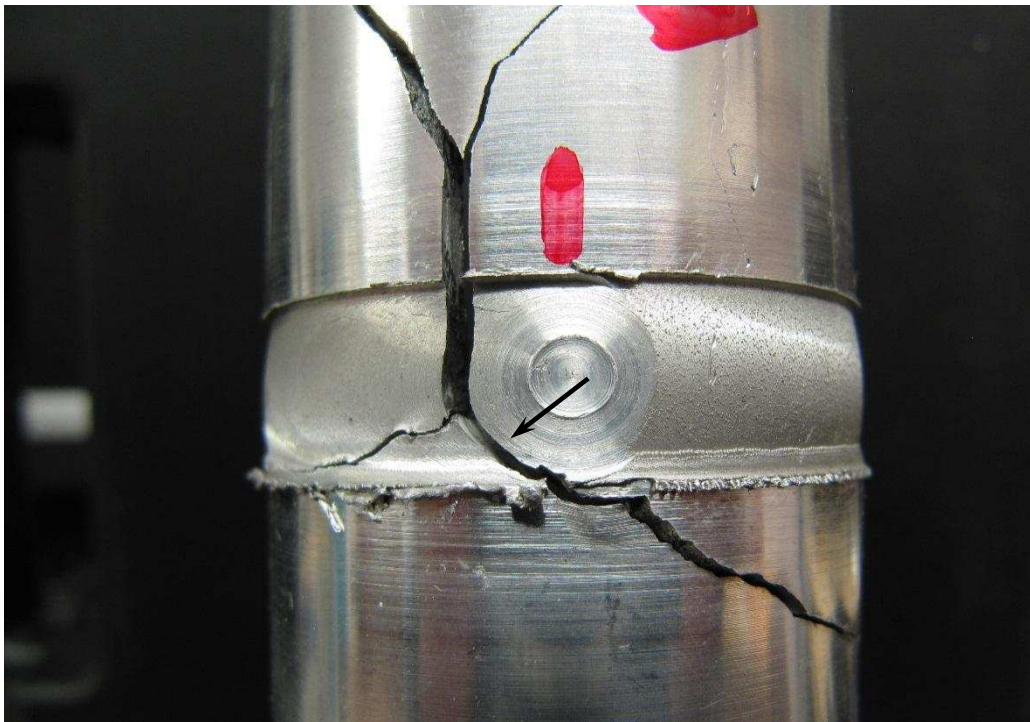


Figure 11 Multiple crack initiation appears to be exacerbated at lower torsional stress and hence longer fatigue lives. This image shows specimen T16.



27 Figure 12 Certain tension-torsion specimens showed crack initiation associated with the  
28 stop-start position. This is specimen IPh8.  
29  
30



57  
58 Figure 13 Specimen T6 which showed classic shear crack bifurcation. The arrow marks the  
59 crack initiation site which is also associated with the stop-start position.  
60  
61  
62  
63  
64  
65

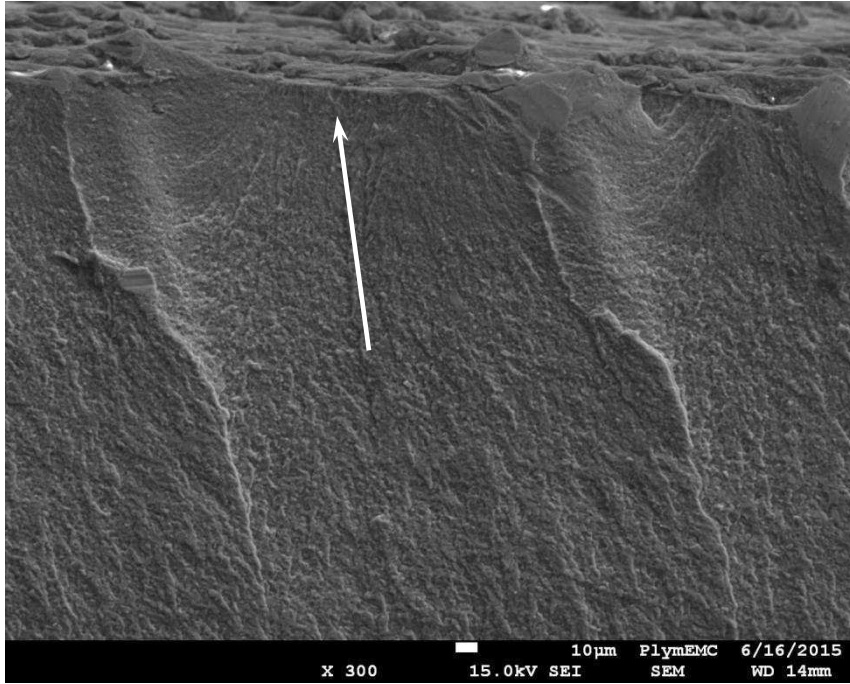


Figure 14 SEM fractograph showing crack initiation (arrow) between surface tool marks in tensile fatigue specimen W121. The small white bar at the bottom of the picture is a 10 μm marker.

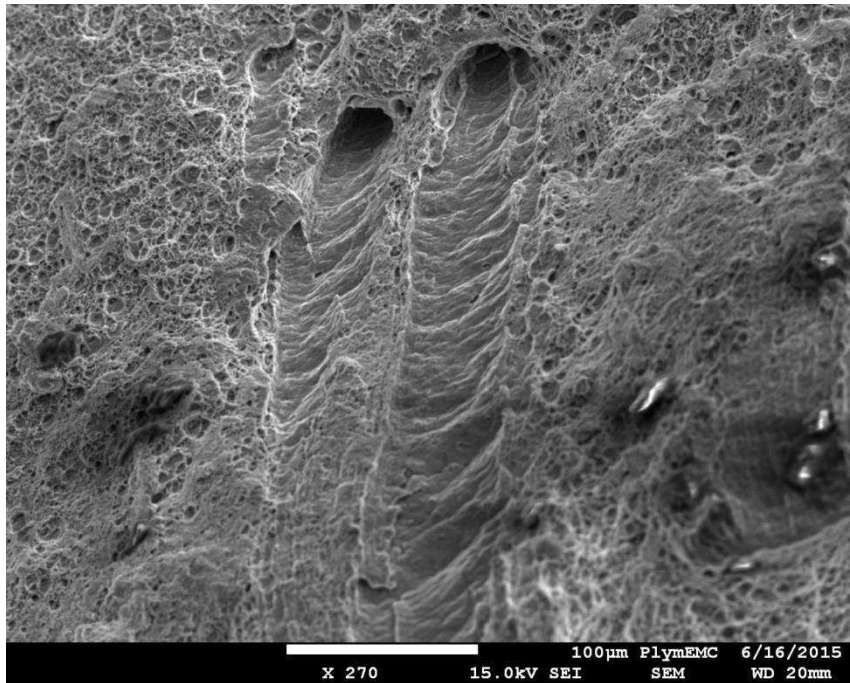
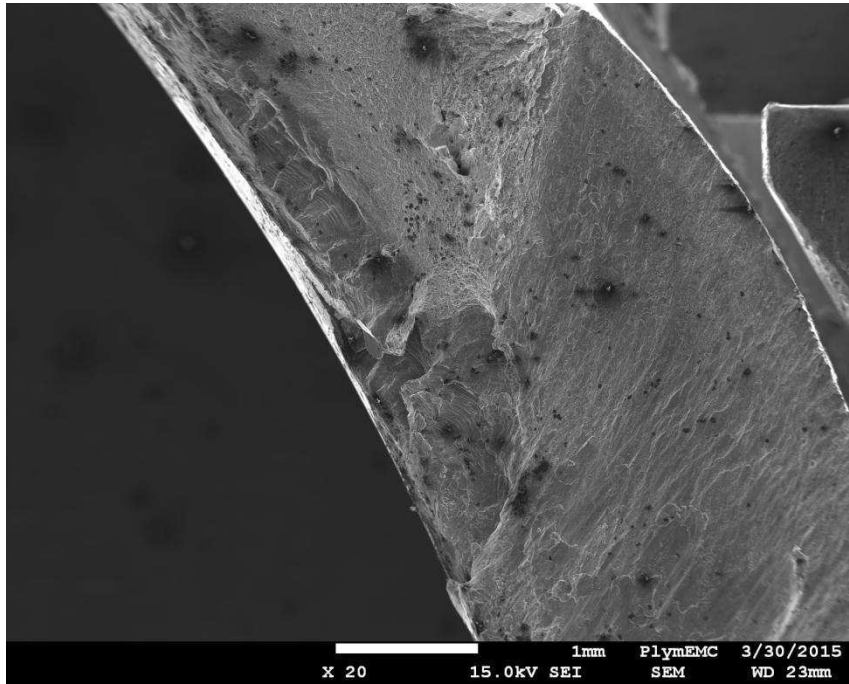
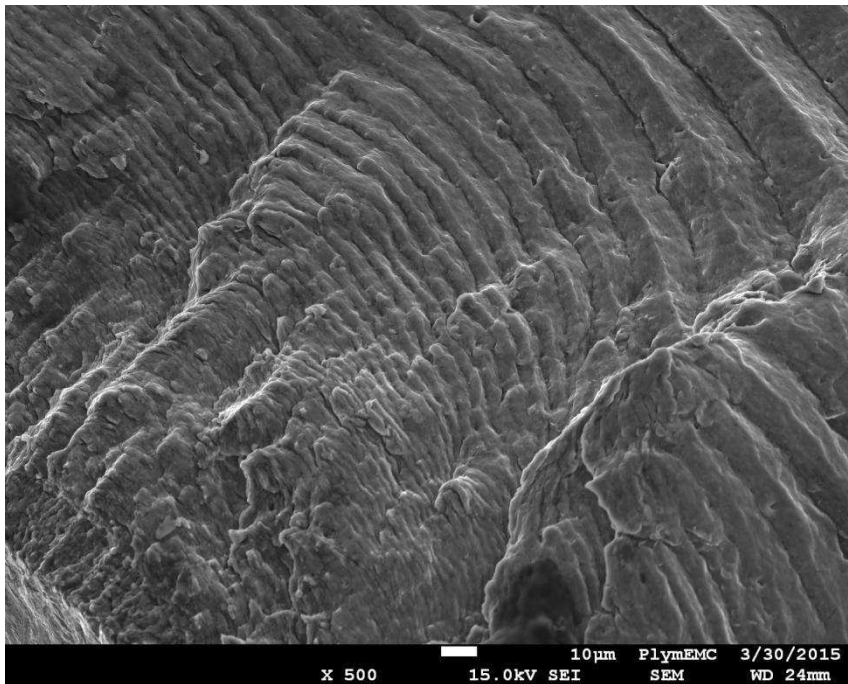


Figure 15 Wormhole defects on the fast fracture region of tensile fatigue specimen W117. As expected the fracture mechanism is microvoid coalescence.



24  
25  
26  
27  
28

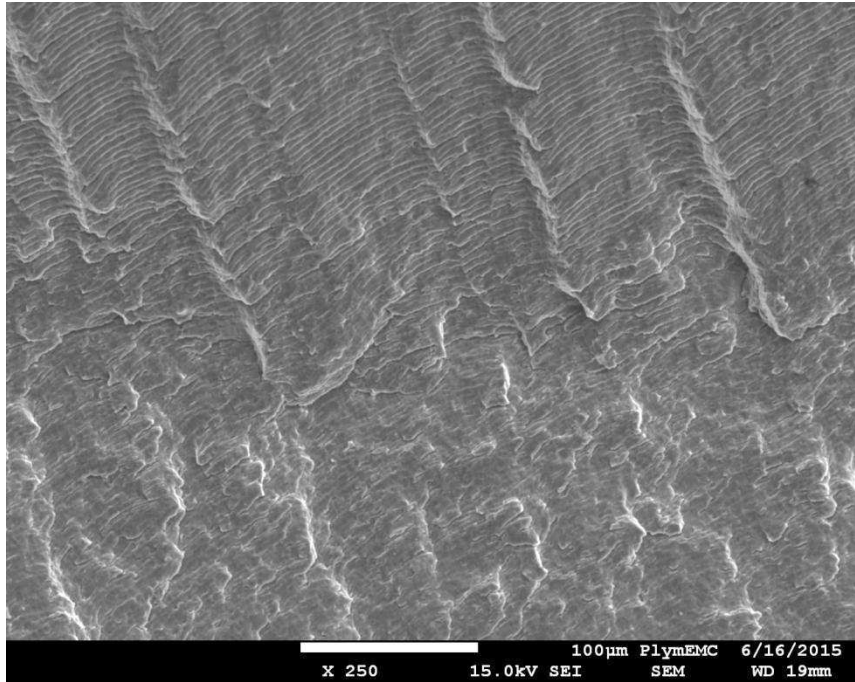
Figure 16 Clear evidence of initiation of the primary fatigue crack from the outer edge of specimen IPh2 can be seen at the upper right hand corner in this image.



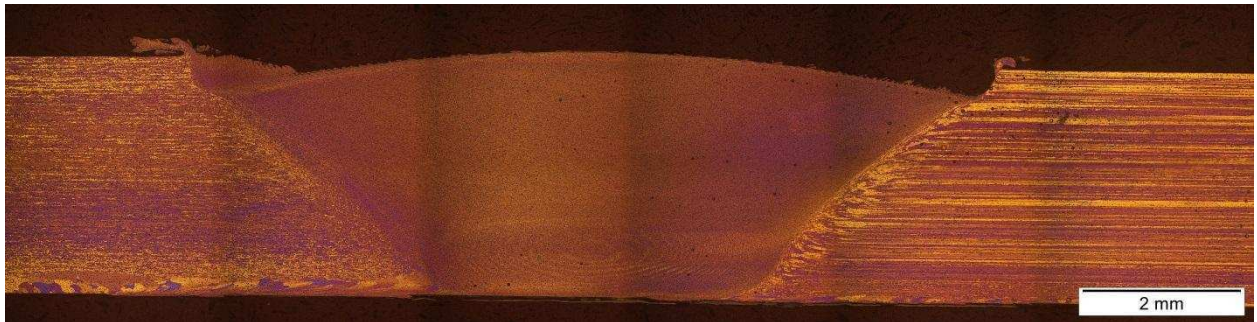
53  
54  
55  
56  
57  
58  
59  
60  
61  
62  
63  
64  
65

Figure 17 A smaller secondary site of fatigue crack initiation is present at the inner edge of tube specimen IPh2 in the lower left corner of this image.





26 Figure 18 The mechanism of fatigue crack growth was by ductile striation formation; this  
27 image shows the fracture surface on tensile fatigue specimen W130 and the  
28 crack growth direction is from the bottom of the image to the top.  
29  
30  
31



46 Figure 19 Polarised light metallographic montage showing the complete weld zone in  
47 specimen T6 tested in torsional fatigue.  
48  
49  
50  
51  
52  
53  
54  
55  
56  
57  
58  
59  
60  
61  
62  
63  
64  
65

1  
2  
3  
4  
5  
6  
7  
8  
9  
10  
11  
12  
13  
14  
15  
16  
17  
18  
19  
20  
21  
22  
23  
24  
25  
26  
27  
28  
29  
30  
31  
32  
33  
34  
35  
36  
37  
38  
39  
40  
41  
42  
43  
44  
45  
46  
47  
48  
49  
50  
51  
52  
53  
54  
55  
56  
57  
58  
59  
60  
61  
62  
63  
64  
65

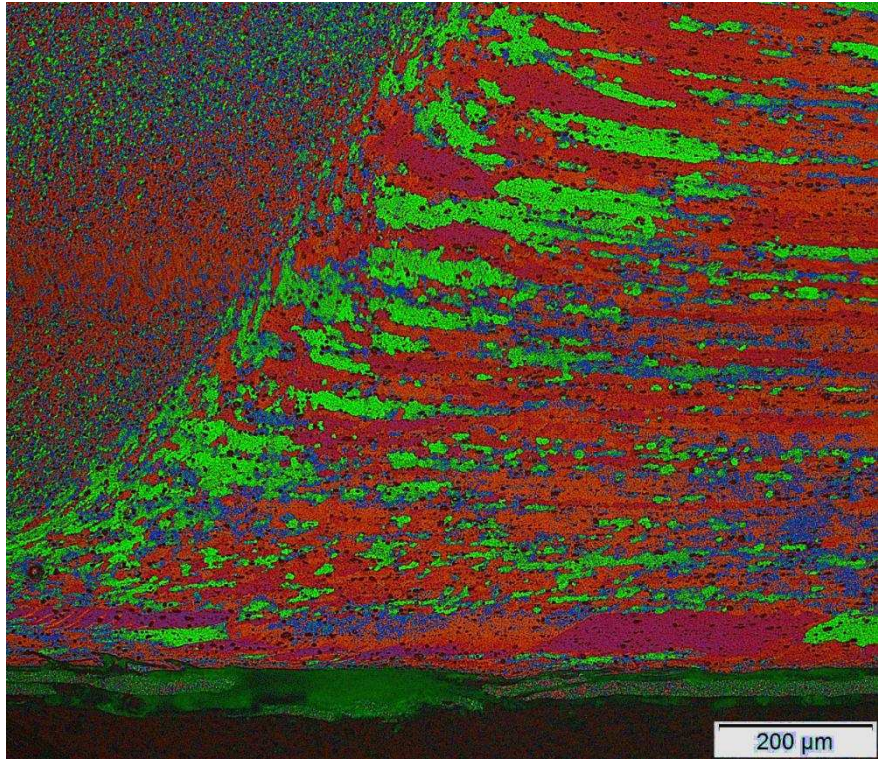


Figure 20 Polarised light micrograph showing the edge of the weld at 100x magnification.

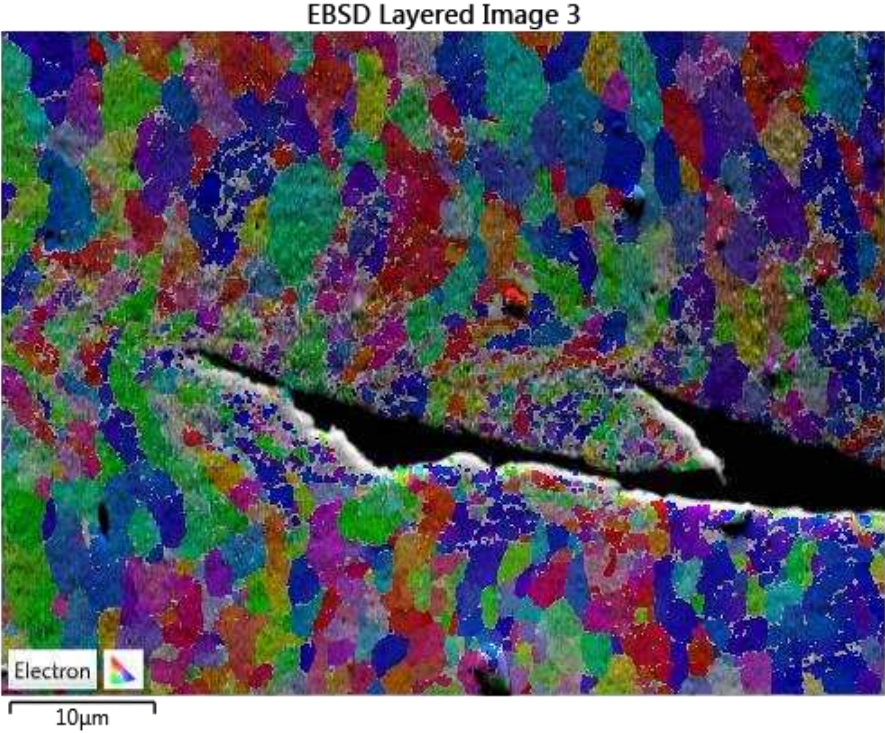


Figure 21 EBSD image showing the crack tip region in specimen T6 at 2,000x magnification.

1  
2  
3  
4  
5  
6  
7  
8  
9  
10  
11  
12  
13  
14  
15  
16  
17  
18  
19  
20  
21  
22  
23  
24  
25  
26  
27  
28  
29  
30  
31  
32  
33  
34  
35  
36  
37  
38  
39  
40  
41  
42  
43  
44  
45  
46  
47  
48  
49  
50  
51  
52  
53  
54  
55  
56  
57  
58  
59  
60  
61  
62  
63  
64  
65

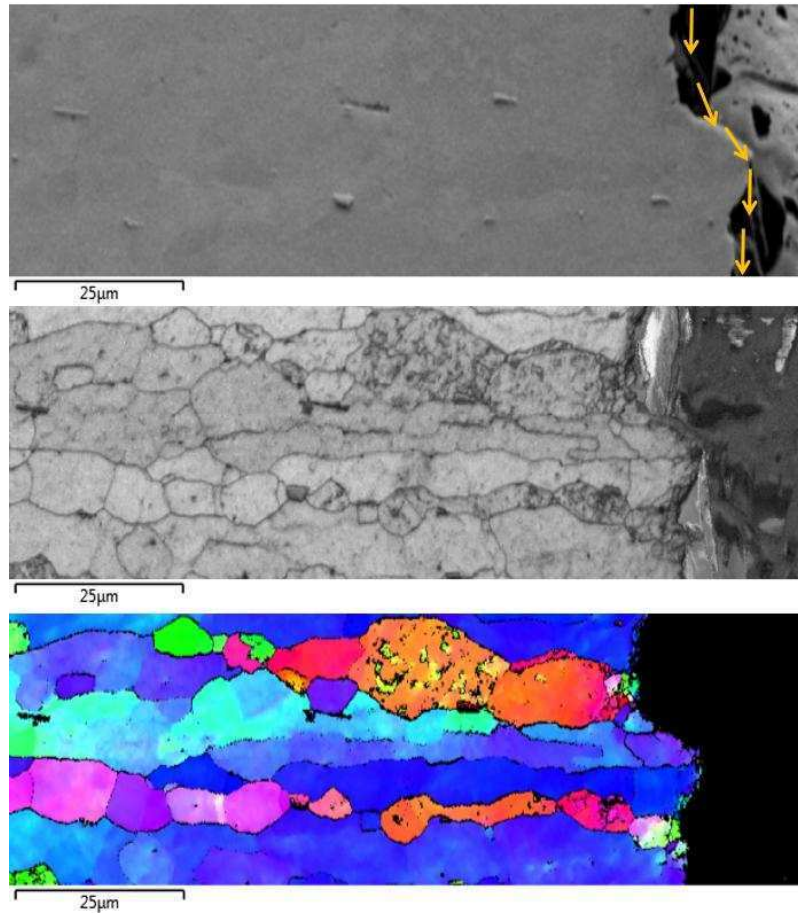


Figure 22 EBSD images of crack growth through the thickness of the tube wall. This shows is the heat-affected zone on the parent plate side of the crack and the crack growth direction is indicated in the top image.

---

# Crack path and fracture analysis in FSW of small diameter 6082 aluminium tubes under tension-torsion loading

E Maggiolini<sup>1</sup>, R Tovo<sup>1</sup>, L Susmel<sup>2</sup>, M N James<sup>3,4</sup> and D G Hattingh<sup>4</sup>

## Abstract

This paper reports part of the work done in a research project aimed at developing an optimised process to join 38 mm diameter tubes of 6082-T6 aluminium alloy using friction stir welding (FSW), and then to determine the fatigue performance under tension, torsion and tension-torsion loading conditions. The final outcome of the project is intended to be guidance for fatigue design of small diameter aluminium tubes joined by FSW, and this paper presents information on crack path and defects under the various loading conditions. Crack path analysis was performed using both low magnification stereo microscopy and scanning electron microscopy, in order to identify crack initiation sites, the direction of crack propagation and the interrelated influence of microstructure and weld geometry on the crack initiation path.

## Keywords

Friction stir welding; multiaxial fatigue; tension-torsion; 6082-T6 aluminium; small diameter tube; crack path.

## Introduction

Welding is the most common joining process in structural design and general manufacturing, and is statistically reliable provided that joint design adheres to codified guidelines. Nonetheless, cracking problems are often observed to be associated with the weld zone, arising from microstructural changes due to the weld thermal cycle, residual stresses induced by differential heating and cooling, and defects introduced in the weld zone either by local geometry changes (stress concentration points) or from the welding process (particularly in fusion welding, which is a casting process). Hence a major challenge faced in fatigue design is

---

<sup>1</sup> Department of Engineering, University of Ferrara, Ferrara, Italy

<sup>2</sup> Department of Civil & Structural Engineering, University of Sheffield, Sheffield, England

<sup>3</sup> School of Marine Science & Engineering, University of Plymouth, Plymouth, England

<sup>4</sup> Department of Mechanical Engineering, Nelson Mandela Metropolitan University, Port Elizabeth, South Africa

that of determining an optimum welding process and parameters that leads to efficient and reliable joints. However, when deploying newer solid-state friction stir welding processes to innovative applications, e.g. joining of small diameter tubes such as might be used in structural design for ground vehicles, there are currently no agreed guidelines that can be applied to fatigue design. The overall objective in this research project was therefore the identification of suitable fatigue design techniques for small diameter friction stir welded (FSW) tubular structures. This paper reports that part of the project that was aimed at characterising crack initiation sites and the subsequent crack path.

Friction stir welding is a solid-state process that was developed at TWI in Cambridge [1]) and it offers high quality welds [2], low residual stresses transverse to the weld joint [3], [4], high fatigue strength [5], a fine grained weld nugget compared with other welding techniques [6], along with minimal joint preparation and a low requirement for post-weld dressing. Disadvantages of the FSW technique include the keyhole left after tool withdrawal, the requirement for a large downwards forging force and rigid clamping along with a lower weld traverse rate than some fusion welding techniques (although FSW rates of 2 m/min have been reported [7]). FSW has therefore been deployed across many areas of manufacturing, including the space industry [7], ships [8], aircraft [9] and ground transportation [10].

Whilst it is easy to join flat plate with FSW, it can be difficult to extend its applications to include tubes, in particular small diameter tubes, and other complex geometries. Friction stir welding of tubes has particular challenges in terms of pin plunge depth and support for the material during welding and also in terms of arranging tool pin retraction as a weld is completed, in a manner that does not to leave the typical plunge hole in the joint line. A friction stir welding process was specifically developed for this project at Nelson Mandela Metropolitan University in South Africa to join extruded 6082-T6 aluminium alloy tubes with an approximate outer diameter (OD) of 38 mm and a wall thickness of approximately 3.5 mm (giving an inner diameter (ID) of some 31 mm).

An MTS I-STIR™ Process Development System provided the foundation for this work, which involved coupling a worm gear motor with a tube support system for the welding process, and integrating the drive system control with that of the I-STIR platform (see Figure 1). As noted above, it is important in FSW of small diameter tubes, where provision for run-on and run-off tabs cannot be provided, not to leave any hole in the joint line after extracting the tool at the end of the welding process; the resulting hole in the joint would act as a very significant weld defect, given the relative sizes of the tool pin, tube diameter and tube wall thickness. A tool with a self-retracting pin was therefore also designed and developed for this particular FSW application.

This is one of very first applications of FSW to small diameter tubular geometries to be reported in the open literature. Peterson et al [11] filed a US patent application in 2011 for a process to friction stir weld casing and small diameter tubing or pipe, although they defined 'small' diameter as an ID  $\approx$  228 mm. Lammlein et al [12] have published work dealing with the development of a process for FSW of 6061-T6 aluminium tubes 107 mm in diameter and with a wall thickness of approximately 5.8 mm. Both of these cases deal with substantially larger diameters than the 38 mm tube used in the present work and this smaller size was chosen to be representative of the dimensions that might be used in space frame chassis design for ground vehicles. Chen et al [13] have also published work on the development of a FSW process for joining 19 mm diameter pipes of 3003 aluminium alloy to pure copper with a 1 mm wall thickness. They made the welds on an adapted lathe and performed tensile tests but did not consider fatigue data.

In contrast, a wealth of data is available for FSW in plates and weld performance has been well characterised in terms of process optimisation and residual stresses [14], static and dynamic mechanical properties [15-16], the influence of weld tool travel speed [17] and weld thermal modelling [18-19].

### **The welding process**

A number of individual tasks had to be accomplished with respect to process development, before the tube specimens required for the multiaxial fatigue testing could be manufactured in

the number required for the test programme (circa 100) with confidence that their properties would be sufficiently consistent to provide reliable fatigue data. These major tasks included:

- a) To design and build the worm gear drive and clamping system for welding;
- b) Electronic integration of this drive into the control software of the I-STIR process development system;
- c) Design and validation of the retracting pin tool used in the welding process;
- d) Determination of suitable welding process parameters to achieve the required weld quality;
- e) Production of 200 mm long welded test specimens for initial microstructural and mechanical property characterisation of the joint.

Figure 2 shows details of the clamping system and the various components are identified as given below:

1. Precision locknut
2. Fenlock cone clamp
3. Flange connecting motor to tube drive shaft
4. Support bearings
5. Tube to shaft coupling
6. Motor keyway lock bolt

The process of aligning the tubes and clamping them in position for welding is quite time-consuming and any extension of this process into industry would require an increased level of automation to be introduced into the process compared with this prototype process. Key issues in the clamping operation include achieving accurate alignment which is fundamental to achieving a high quality weld; heat retention during welding of multiple tube specimens, which makes it increasingly difficult to release the cone clamps (probably because of expansion of the

threads on the release bolts which necessitated replacement of a number of these bolts during the production run of 100 specimens); difficulty in achieving an even clamping force on the tubes caused by differences in ID of the tubes and by different out-of-round measurements both of which lead to distortion of the tube during setup. The sequence of events during welding is outlined in Figure 3 and it should be noted that it was found necessary to machine the tube OD to 37.5 mm to improve the tube alignment during set-up.

The weld process used force control on a small diameter tool shoulder of 10 mm rotating at 600 rpm, an optimised rotational tube feed rate of 50 mm/min, and a tool pitch angle of 2°. It was found necessary to weld the tube through a rotation of 720°, i.e. two complete revolutions, in order to achieve a good surface finish; the first pass improves the uniformity of shoulder contact and hence the second pass improves the surface finish. In optimising the tool geometry, the pin penetration depth was initially set to approximately 85% of the nominal tube wall thickness and the quality of the resulting weld was evaluated via metallographic examination after welding. A pin length of 2.45 mm was found to work very effectively with a plunge depth of 2.5 mm to ensure adequate shoulder contact. Figure 4 and the associated information on weld process parameters in Table 1 demonstrate the influence of the tool rotational feed rate, tool rotational speed and number of complete revolutions of the tube on the quality of weld surface finish, which is a key controlling factor in fatigue performance. Full details of the development and optimisation of the welding process will be reported elsewhere.

One hundred fatigue specimens were manufactured by joining two 110 mm lengths of 6082-T6 aluminium tube with friction stir welding, as shown in Figure 5. The chemical composition of this alloy is given in Table 2. Once the samples had been manufactured in South Africa, they were sent to the University of Sheffield and the University of Ferrara for the mechanical testing part of the programme. Tensile fatigue testing was carried out in Ferrara with a load ratios of  $R = 0.1$  and  $R = -1$ , while torsion fatigue and biaxial tension-torsion testing were carried out in Sheffield with load ratios of  $R = 0$  and  $R = -1$ . The tensile fatigue testing used a 250kN MTS servohydraulic fatigue testing machine and a Schenk servohydraulic tension-torsion fatigue



testing machine was used for the tension-torsion work. Biaxial fatigue testing used both in-phase (IPh) and out-of-phase (OPh) constant amplitude sinusoidal loading. Table 3 gives the relevant data on the testing programme where the biaxiality stress ratio  $\lambda = \frac{\sigma_a}{\tau_a}$ , with  $\sigma_a$  being the tensile stress amplitude and  $\tau_a$  is the torsional stress amplitude in the fatigue cycling, while  $\Theta$  is the phase angle between tension and torsion loading.

After testing, the fractured specimens were sent to the University of Plymouth for fractographic and metallographic analysis of the fracture surfaces and crack paths. This part of the work entailed acquiring data from light and scanning electron microscopy, polarised light metallography and electron backscatter diffraction of specific crack initiation regions. The aim was to develop a compendium of fractographs and crack initiation sites, along with relevant microstructural information, as underpinning information for the fatigue life prediction and improvement aspects of the project.

### **Monotonic mechanical properties**

The tensile properties of a welded joint are a reasonable first order indicator of the joint quality and 'joint efficiency' (defined as the ratio of tensile strength of the weld to that of the parent plate) is often used to describe the mechanical performance of welded joints. In the present case the tensile strength was measured on complete tubes and on microtensile specimens. Tests on the microtensile specimens, with a cross-section of 2 mm by 3 mm (Figure 6) were intended as trials of the viability of using a Gatan Microtest 2000EW test module in a scanning electron microscope (SEM) whilst performing microstructural characterisation under load via electron backscatter diffraction (EBSD). Very consistent tensile strength values were recorded from both types of tensile test, and mechanical property data in tension and in torsion are shown in Table 4. The welded joint efficiency is 0.55; this value compares well with the figure of 0.67 reported for FS welds in 3 mm thick plates of 6082-T6 [15]. The microtensile specimens were polished in order to observe where failure occurred and this was found to be in the weld

zone on the tool retreating side. The tube specimens failed at the tool shoulder undercut on either the advancing or retreating sides of the weld, which represents a stress concentrating feature.

### **Fatigue crack path analysis**

Once the fatigue tests had been completed the tube specimens were pulled apart to reveal the fracture surfaces and an analysis of the crack initiation site and crack path was performed on each specimen. This entailed identifying and recording the test conditions for each specimen, determining whether the crack lay on the advancing or retreating side of the weld, or was in the weld itself, the circumferential position at which the crack had initiated relative to the stop-start position for those specimens where this was possible, recording the fractographic appearance of the crack using both low magnification light microscopy and scanning electron microscopy and, in certain cases, using optical metallography or electron backscatter diffraction to follow the crack path through the microstructure at the initiation site.

To assist in this fractographic analysis, crack initiation sites were defined in terms of their angular position relative to the stop-start position in the weld, given as  $0^\circ$  in Figure 7 where the advancing side of the weld is towards the top in the figure, and the retreating side is towards the bottom. The procedure adopted in documenting the crack path and defects was to record the entire fracture surface using digital images and then to identify crack initiation points and any other interesting features for closer inspection using scanning electron microscopy. Crack initiation was primarily closely associated with the slight undercut at the edge of the weld zone arising from the tool shoulder, but could occur on either the advancing or retreating side of the weld, which exhibit individual variations in values of hardness and residual stress. Table 5 gives the location of crack initiation for all the specimens tested in tensile fatigue. In the two specimens that were left intact (W117: 709,775 cycles and W121: 476,829 cycles) cracking had initiated along the middle plane of the weld zone and one specimen fractured through the middle of the weld (W118: 1,247,627 cycles). As is usually the case with welded specimens, the fatigue life can be quite variable at specific values of applied stress range and this reflects

the presence on the weld surface of tool marks (arising from the tool advance in each tool revolution), the tool shoulder undercut and any near-surface defects. In the majority of the specimens (58%) cracking initiated at the advancing side of the weld, at the retreating side in 27% of the specimens and in other locations in 15% of specimens. It is likely that the slight increase often observed on the advancing side of the weld in the value of tensile residual stress in the direction transverse to a friction stir weld [4] underlies this predilection for crack initiation on the advancing side under a tensile load.

Table 6 presents the data for the torsional specimens, and it should be noted that the torsional loading damages the fracture surfaces and usually makes impossible post-hoc determination of the crack initiation point around the circumference. The torsional data indicates a significant influence of both stress ratio  $R$  and shear stress amplitude on the position and crack path associated with crack initiation. Thus under torsional fatigue loading with  $R = 0$ , crack initiation occurred on the retreating side in all welds examined, whilst under reversed loading with  $R = -1$  crack initiation predominantly occurs on the advancing side. Under torsional loading, at the two lowest shear stress ranges used in both  $R = 0$  and  $R = -1$  loading, the crack path does not follow the undercut zone at the sides of the weld, but instead shows a more classical shear crack initiation at an angle of approximately  $45^\circ$  (see the two images given in Figure 8).

The fatigue data and information on initiation location is given in Table 7 for the in-phase and out-of-phase tension-torsion testing. It is clear that cracks can initiate with approximately equal facility on either the advancing or retreating side of the weld which implies that the local multiaxial strain state is more important than the effects of hardness changes or residual stress induced in the friction stir welding process. An interesting observation is that in a number of tests the crack moved from the advancing to the retreating side during growth although this does not seem to have any relationship with load parameters (Figure 9). In the case of the torsion specimens, multiple crack initiation sites along the retreating side of the weld were observed under  $R = 0$  loading across the range of applied stress values, e.g. T23 (92 MPa), T16

(67 MPa). Figures 10 and 11 show examples of such multiple initiation sites. It can also be observed that the number of cracks initiated appears to increase as the applied shear stress decreases and hence the fatigue life increases. A problem with those specimens that displayed multiple crack initiation but that did not completely fracture, was that the primary initiation site could not be determined because of the difficulty in separating the specimen at the appropriate place, e.g. Figure 11.

Certain of the in-phase tension-torsion specimens, e.g. IPh8 and the torsion specimens, e.g. T4 exhibited crack initiation coincident with the stop-start position, as shown in Figures 12 and 8a, respectively. Torsion fatigue specimens occasionally showed classic shear crack bifurcation under torsion loading with  $R = -1$  and Figure 13 shows an example of this type of cracking where crack initiation has also occurred at the stop-start position. Table 8 summarises the crack location information for all specimens and shows that for the 62 specimens where this information was obtained, 50% of cracks initiated at the advancing side, 39% at the retreating side and 11% at other positions in the weld.

In specimens that had not experienced significant surface damage during torsion or reversed tension loading, it was generally straightforward to locate the primary crack initiation site, although where multiple cracks of similar size had occurred the fracture surfaces could not be easily exposed. Crack initiation generally occurred at the surface undercut caused by the tool shoulder at either advancing or retreating sides of the weld, and this is demonstrated in Figure 14 (tensile fatigue specimen W121) where ratchet marks are present on the fracture surface that correspond with the tool shoulder marks, and a small fatigue crack has initiated between these marks (indicated with an arrow). Occasional wormhole defects, which are a relatively common form of FSW defect, were observed on the fracture surface (see the tensile fatigue specimen W117 shown in Figure 15). The mechanism by which such defects are formed reflects the details of the plastic mixing process during friction stir welding and has been described in reference [20] which also summarises other forms of FSW defect.

The specimens tested under biaxial tension-torsion loading were more interesting, as although parts of the fracture surfaces had suffered damage from contact during crack growth, certain specimens indicated that although the primary crack had initiated at the outside of the tube (in-phase tension-torsion specimen IPh2 - Figure 16), smaller secondary cracks had sometimes formed at the inner surface later in the fatigue process (IPh2 - Figure 17). Figure 17 also demonstrates that the formation of this secondary crack occurred at a late stage in the fatigue process because the fracture surface fairly quickly starts to reflect the underlying 'onionskin' structure in the weld zone, reflecting high levels of applied load and hence high growth rates. Where fracture surfaces were undamaged, the mechanism of fatigue crack growth could be observed to be ductile striation formation as shown in Figure 18 (tension fatigue specimen W130).

### **Metallography**

Ultimately, it is intended to evaluate the microstructure and crack path using polarised light microscopy and electron back-scatter diffraction (EBSD) in a scanning electron microscope, but this work has not yet been completed. Figure 19 shows a polarised light metallographic montage that shows the complete weld zone for the torsion specimen T6. Individual regions of the microstructure can be examined at higher magnification (Figure 21). This can also be done for cracked specimens, although it entails polishing back the surface to provide a flat region for etching, and the etching process trends to attack crack edges preferentially. This is where EBSD has a distinct advantage over light microscopy, although it also requires a flat surface in order to adequately index the microstructure and the plastic deformation that surrounds cracks can therefore lead to a loss of resolution. Figure 21 shows a typical EBSD image of the crack tip region in specimen T6 at 2,000x magnification and a fairly good resolution of the microstructure has been obtained to within a distance of about 10  $\mu\text{m}$  from the crack edge. The interesting point that this image does not make clear is whether grain refinement has occurred due to plastic strain in the zone near to the crack tip, or whether this apparent effect merely

reflects a loss of data in this heavily deformed region. The EBSD image shown in Figure 22 contains the crack initiation region in specimen IPh-1, looking at the crack growing down through the tube thickness. The crack has initiated and grown along the tool shoulder undercut on the advancing side of the weld and the grain structure reflects the heat-affected zone (HAZ) on the parent plate side of the crack. The direction of crack growth through the tube thickness is shown by the arrows in the top image.

## **Conclusions**

The work described in this paper has summarised some of the crack path observations made during a major three-year research project that has had four international partners working in synergy on developing both a new FSW process for joining small diameter tubes and on characterising the fatigue performance of the tubes under tension, torsion and biaxial tension-torsion loading. In this project the first year was spent developing the FSW technology to successfully join small diameter tubes and optimising the process conditions to achieve consistent mechanical properties (Nelson Mandela Metropolitan University). The next 18 months entailed a complementary programme of fatigue testing at Universities in two countries (Universities of Sheffield and Ferrara), with the fatigued specimens finally being delivered to the University of Plymouth in the last 6 months of the project for fractographic and metallographic characterisation.

It can be concluded that:

1. Small diameter tubes can be successfully welded and can deliver similar values of joint efficiency (0.55) to those observed with flat plates joined by FSW. The main problems arise from designing a process with a retractable tool, obtaining an optimised process, alignment of out-of-round tubes with small wall thickness and heating of the clamping arrangement during a production run.
2. The welding process would need to be automated in order to be taken out into industry, but the pilot project has indicated considerable potential for deployment in the ground vehicle industry.

3. The loading conditions do not affect the location of crack initiation in any significant way in terms of fatigue design, although small variations were observed in, for example, tensile fatigue at stress ratios of either 0.1 or -1. Variations were limited to a move from advancing to retreating side of the weld with crack initiation still generally confined to the undercut groove that occurs at the edge of the tool shoulder.

### **Acknowledgment**

Support for this work from the Leverhulme Trust through the award of International Network Grant IN-2012-107 is gratefully acknowledged.

### **References**

- [1] Thomas W.M., Nicholas E.D., Needham J.C., Murch M.G., Temple-Smith P., Dawes C.J.: "Friction welding.", (1991), PCT/GB92/02203.
- [2] Hussein, S.A., Tahir, A.S.M., Hadzley, A.B.: "Characteristics of aluminum-to-steel joint made by friction stir welding: A review", (2015) *Materials Today Communications*, Vol. 5, pp. 32-49.
- [3] Ji, P., Yang, Z., Zhang, J., Zheng, L., Ji, V., Klosek, V.: "Residual stress distribution and microstructure in the friction stir weld of 7075 aluminum alloy", (2015) *Journal of Materials Science*, Vol. 50, 22, pp. 7262-7270.
- [4] James, M.N., Hughes, D.J., Hattingh, D.G., Bradley, G.R., Mills, G. and Webster, P.J. (2004), "Synchrotron diffraction measurement of residual stresses in friction stir welded 5383-H321 aluminium butt joints and their modification by fatigue cycling", *Fatigue and Fracture of Engineering Materials and Structures*, Vol. 27 pp.187-202.
- [5] Polezhayeva H., Toumpis A.I., Galloway A.M., Molter L., Ahmad B., Fitzpatrick M.E.: "Fatigue performance of friction stir welded marine grade steel", (2015) *International Journal of Fatigue*, Vol. 81, pp. 162-170.
- [6] Krasnowski, K., Hamilton, C. and Dymek, S.: "Influence of tool shape and weld configuration on microstructure and mechanical properties of the AL 6082 alloy FSW joints", (2015) *Archives of Civil and Mechanical Engineering*, Vol. 15 pp. 133-141.
- [7] Shah, S., and Tosunoglu, S.: "Friction stir welding: current state of the art and future prospects", (2012) 16<sup>th</sup> World Multi-Conference on Systemics, Cybernetics and Informatics, Orlando, FL, July 17-20, 2012.

- [8] Kolligan, K. J.: "Friction stir welding for ship construction", (2004) Article prepared under contract N0014-06-D-0048 for the Office of Naval Research, by Concurrent Technologies Corporation, Harrisburg, PA, 2004.
- [9] Burford, D., Widener, C. and Tweedy, B.: "Advances in friction stir welding for aerospace application", *Airframer*, Issue 14, pp. 3-7, November (2006), Proceedings of the 6<sup>th</sup> AIAA Aviation Technology, Integration and Operations Conference, Wichita, Kansas, September 25-27, 2006.
- [10] Nicholas, W. M. Thomas and E. D.: "Friction stir welding for the transportation industries", (1997) *Materials and Design*, Vol. 18, Nos. 4/6, pp. 269-273.
- [11] Peterson, J., Hall, J., Steel, R.J., Babb, J., Collier, M. and Packer, S.M. : "Out of position friction stir welding of casing and small diameter tubing or pipe, (2011) Patent Application WO 2011053361 A2, May 2011.
- [12] Lammlein, D.H., Gibson, B.T., DeLapp, D.R., Cox, C., Strauss, A.M. and Cook, G.E.: "Friction stir welding of small diameter pipe: an experimental and numerical proof of concept for automation and manufacturing", (2012) *Proceedings of the Institution of Mechanical Engineers, Part B: Journal of Engineering Manufacture*, Vol. 226 no. 3 pp. 383-398.
- [13] Binxi Chen, Ke Chen, Wei Hao, Zhiyuan Liang, Junshan Yao, Lanting Zhang and Aidang Shan: "Friction stir welding of small-dimension Al3003 and pure Cu pipes, (2015) *Journal of Materials Processing Technology*, 223 pp. 48-57.
- [14] H. Lombard, D.G. Hattingh, A. Steuwer and M.N. James: "Effect of process parameters on the residual stresses in AA 5083-H321 friction stir welds, (2009) *Materials Science and Engineering A* 501 pp. 119-124.
- [15] Moreira, P.M.G.P., Santos, T., Tavares, S.M.O., Richter-Trummer, V., Vilaça, P. and de Castro, P.M.S.T.: "Mechanical and metallurgical characterization of friction stir welding joints of AA6061-T6 with AA6082-T6", (2009), *Materials and Design*, Vol. 30, pp. 180-187.
- [16] Liu, H.J., Fujii, H., Maeda, M., Nogi, K.: "Tensile properties and fracture locations of friction-stir-welded joints of 2017-T351 aluminum alloy", (2003), *Journal of Materials Processing Technology*, Vol. 142, Issue 3, pp. 692-696.
- [17] James, M.N., Hattingh, D.G. and Bradley, G.R.: "Weld tool travel speed effects on fatigue life of friction stir welds in 5083 aluminium", (2003) *International Journal of Fatigue*, 25 pp. 1389-1398.
- [18] Pal, S. and Phaniraj, M.P.: "Determination of heat partition between tool and workpiece during FSW of SS304 using 3D CFD modelling", (2015) *Journal of Materials Processing Technology*, Vol. 222 pp. 280-286.



- [19] Buglioni, L., Tufaro, L.N. and Svoboda, H.G.: "Thermal cycles and residual stresses in FSW of aluminium alloys: experimental measurements and numerical models, (2015) Procedia Materials Science, Vol. 9 pp.87-96.
- [20] M.N.James, G.R. Bradley, H. Lombard and D.G. Hattingh: "The relationship between process mechanisms and crack paths in friction stir welded 5083-H321 and 5383-H321 aluminium alloys", Fatigue and Fracture of Engineering Materials and Structures, Vol. 28 pp.245-256.

Table 1 Weld process parameters used to make the trial welds shown in Figure 4.

Weld	Feedrate	Tool rpm	Total rotational angle
1	100 mm/min	600	360°
4	100 mm/min	800	360°
3	100 mm/min	800	720°
2	50 mm/min	800	720°

Table 2 Chemical composition of the 6082 aluminium alloy.

	Mg	Si	Mn	Fe	Zn	Cu	Ti	Cr	Al
<b>Specification</b>	0.60-1.20	0.70-1.30	0.40-1.00	0.50	0.20	0.10	0.10	0.25	Balance
<b>Tube Alloy</b>	0.647	0.988	0.526	0.222	0.021	0.034	0.012	0.006	Balance

Table 3 Summary of the fatigue testing parameters including the biaxiality ratio  $\lambda$ .

Test	Number of samples	$\lambda$	R	$\theta^\circ$
A	10	$\infty$	0.1	-
B	9	$\infty$	-1	-
C	10	0	0.1	-
D	14	0	-1	-
E	7	1.73	0.1	0
F	7	1	0.1	0
G	8	1.73	-1	0
H	7	1	-1	0
I	7	1.73	-1	90
L	4	1	0	90
M	7	1.73	0	90

Table 4 Tensile and torsional strength data for the welded 6082-T6 tubes. Superscript 1 indicates microtensile data and superscript 2 relates to complete tube tests.

<b>Parent plate<sup>1</sup></b>	Tension	303 MPa
<b>Weld zone<sup>1</sup></b>	Tension	169 MPa
<b>Weld zone<sup>2</sup></b>	Tension	168 MPa
<b>Weld zone<sup>2</sup></b>	Torsion	118 MPa

Table 5 Crack initiation location in the tensile fatigue specimens, defined in terms of their angle from the stop-start position and the position in the weld zone.

Load ratio	Specimen	$\Delta\sigma$ (MPa)	Cyclic Life	Crack initiation	$\alpha^\circ$
<b>R = 0.1</b>	W119	154.4	17,200	Advancing side	-135
	W111	154.4	19,763	Double location	160
	W127	138.9	81,298	Double location	30
	W129	102.9	37,991	Advancing side	-110
	W128	102.9	67,970	Advancing side	1
	W115	102.9	697,953	Advancing side	89
	W114	92.6	463,257	Advancing side	-95
	W121	92.6	476,829	Not determined	
	W116	92.6	2,000,000	Run out	
	W125	82.4	2,000,000	Run out	
<b>R = -1</b>	W122	82.3	96,400	Advancing side	20
	W123	77.2	2,000,000	Run out	
	W124	61.7	466,154	Double location	-40
	W130	56.6	222,671	Middle	-75
	W117	56.6	709,775	Not separated	0
	W120	56.6	1,167,540	Not separated	0
	W113	56.6	2,000,000	Run out	
	W118	51.5	1,247,627	Middle	-45
	W112	51.5	2,000,000	Run out	

Table 6 Crack initiation location in the torsional fatigue specimens, defined in terms of the position in the weld zone.

Load ratio	Specimen	$\tau_a$ (MPa)	Cyclic Life	Crack initiation
<b>R = 0</b>	T17	100	8,764	Retreating side
	T18	100	24,610	Retreating side
	T23	91.6	208,575	Multiple sites on retreating side
	T24	91.6	275,002	Not determined
	T13	83.3	318,930	Multiple sites on retreating side
	T14	83.3	347,127	Not determined
	T15	75	427,865	Not determined
	T19	75	522,030	Two sites on retreating side
	T16	66.6	1,071,840	Multiple sites on retreating side
	T20	66.6	2,000,000	Not determined
<b>R = -1</b>	T11	133.2	2,053	Retreating side
	T22	133.2	652	Advancing side
	T12	116.6	31,589	Advancing side
	T21	116.6	11,941	Advancing side
	T1	111.6	1,430	Not determined
	T8	100	275,020	Not determined
	T9	100	155,896	Advancing side
	T10	100	917,913	Advancing side
	T2	83.4	56,326	Advancing side
	T6	83.4	1,726,450	Stop-start position longitudinally
	T7	83.4	601,946	Advancing side
	T4	75	1,304,324	Advancing side
	T5	75	1,664,764	Advancing side
	T3	66.6	2,000,000	Not determined

Table 7 Crack initiation location in the tension-torsional fatigue specimens, defined in terms of the position in the weld zone.

Specimen	$\sigma_a$ (MPa)	$\tau_a$ (MPa)	R	$\Theta^\circ$	$\lambda$	Cyclic Life	Crack Initiation
IPh-1	47.4	27.4	-1	0	1.73	47,641	Advancing side
IPh-2	47.4	27.4	-1	0	1.73	139,861	Advancing side
IPh-3	39.5	22.8	-1	0	1.73	171,506	Retreating side
IPh-4	39.5	22.8	-1	0	1.73	369,237	Advancing to Retreating
IPh-5	33	19	-1	0	1.73	355,728	Not determined
IPh-6	33	19	-1	0	1.73	932,288	Retreating side
IPh-7	33	19	-1	0	1.73	513,782	Not determined
IPh-8	33	19	-1	0	1.73	623,187	Stop-start
IPh-9	39.5	39.5	-1	0	1	160,391	Retreating side
IPh-10	39.5	39.5	-1	0	1	47,967	Advancing side
IPh-11	34.3	34.3	-1	0	1	358,240	Not determined
IPh-12	34.3	34.3	-1	0	1	533,508	Advancing side
IPh-13	30.3	30.3	-1	0	1	592,342	Not determined
IPh-14	30.3	30.3	-1	0	1	650,684	Advancing side
IPh-15	30.3	27.4	-1	0	1.17	148,831	Retreating side
IPh-23	39.5	22.8251	-1	90	1.73	173,954	Retreating side
IPh-24	32.9	19	-1	90	1.73	2,000,000	Not determined
IPh-25	33	19	-1	90	1.73	139,484	Retreating side
IPh-26	39.5	22.8	-1	90	1.73	44,499	Weld zone

IPh-27	33	19	-1	90	1.73	46,086	Weld zone
IPh-28	33	19	-1	90	1.73	857,580	Not determined
IPh-29	35.6	20.5	-1	90	1.73	686,557	Advancing side
IPh-30	30.3	30.3	0	0	1	236,518	Advancing to Retreating
IPh-31	25	25	0	0	1	175,164	Advancing to Retreating
IPh-32	25	25	0	0	1	170,009	Retreating side
IPh-33	21	21	0	0	1	273,482	Retreating side
IPh-34	18.5	18.5	0	0	1	857,370	Retreating side
IPh-35	18.5	18.5	0	0	1	548,537	Weld zone
IPh-36	15.8	15.8	0	0	1	1,351,096	Not determined
IPh-16	33	19	0	0	1.73	205,952	Retreating side
IPh-17	30.3	17	0	0	1.73	118,631	Retreating side
IPh-18	18.5	10.6	0	0	1.73	2,000,000	Not determined
IPh-19	47.4499	27.4	0	0	1.73	25,614	Retreating side
IPh-20	23.7	13.7	0	0	1.73	501,988	Advancing to Retreating
IPh-21	21	12.2	0	0	1.73	891,341	Advancing to Retreating
IPh-22	23.7	13.7	0	0	1.73	2,000,000	Not determined
OoPh-37	33.0	19.0	0	90	1.73	98,938	Retreating side
OoPh-38	29.0	16.7	0	90	1.73	224,230	Retreating side
OoPh-39	23.7	13.7	0	90	1.73	2,000,000	Not determined
OoPh-40	33.0	19.0	0	90	1.73	38,084	Advancing side
OoPh-41	29.0	16.7	0	90	1.73	121,400	Advancing side

OoPh-42	23.7	13.7	0	90	1.73	2,000,000	Not determined
OoPh-43	26.4	15.2	0	90	1.73	745,539	Advancing side
OoPh-44	29.0	29.0	0	90	1.00	34,544	Retreating side
OoPh-45	21.1	21.1	0	90	1.00	2,000,000	Not determined
OoPh-46	26.4	26.4	0	90	1.00	80,612	Not determined
OoPh-47	25.0	25.0	0	90	1.00	945,586	Not determined

Table 8 Summary of the crack location information for all specimens, in terms of initiating at either the advancing or retreating side of the weld.

	<b>Tensile</b>	<b>Torsion</b>	<b>In Phase</b>	<b>Out Of Phase</b>	<b>Sum</b>
<b>Advancing side</b>	8	9	11	3	<b>31</b>
<b>Retreating side</b>	2	7	12	3	<b>24</b>
<b>Other</b>	2	1	4	0	<b>7</b>
<b>Not determined</b>	6	7	9	5	<b>27</b>





Figure 1 Illustration of a tube specimen in position ready to be welded.

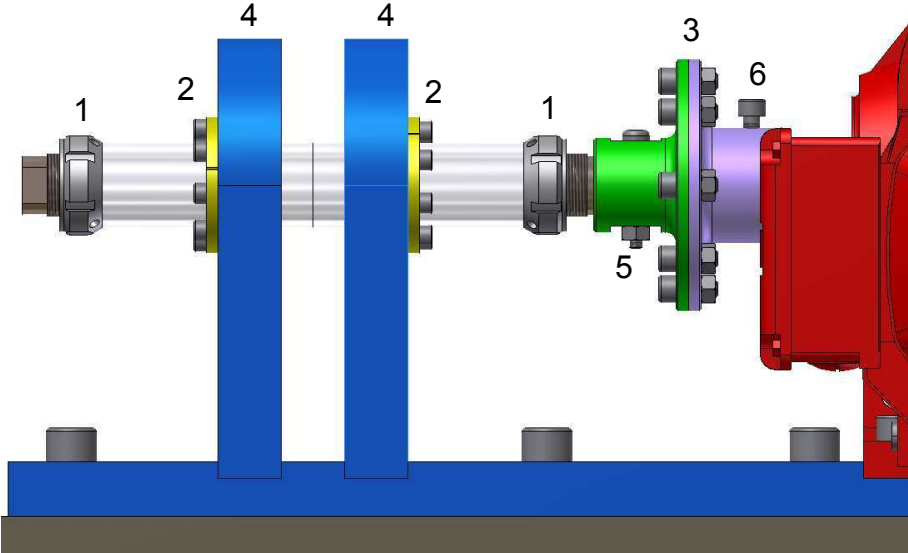


Figure 2 Schematic diagram showing the various components in the tube clamping system.

### Weld Sequence

1. Pin moves toward weld centreline
2. Pin touches tube for zero reference of plunge depth
3. Start spindle rotation
4. Plunge pin and shoulder
5. Ensure shoulder in contact with pipe
6. Initiate pipe rotation
7. Rotate pipe 720° to achieve good surface finish (2 full revolutions)
8. Initiate pin retraction after 630° rotation keeping pipe rotating to eliminate exit hole
9. Retract shoulder

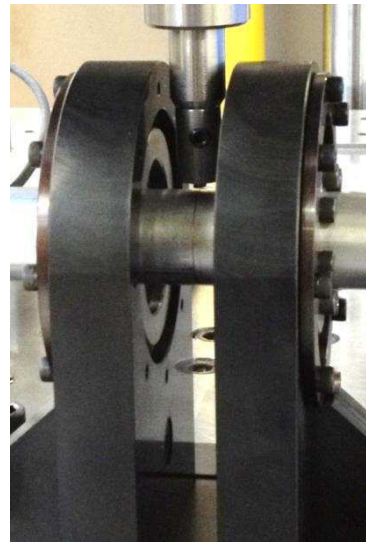
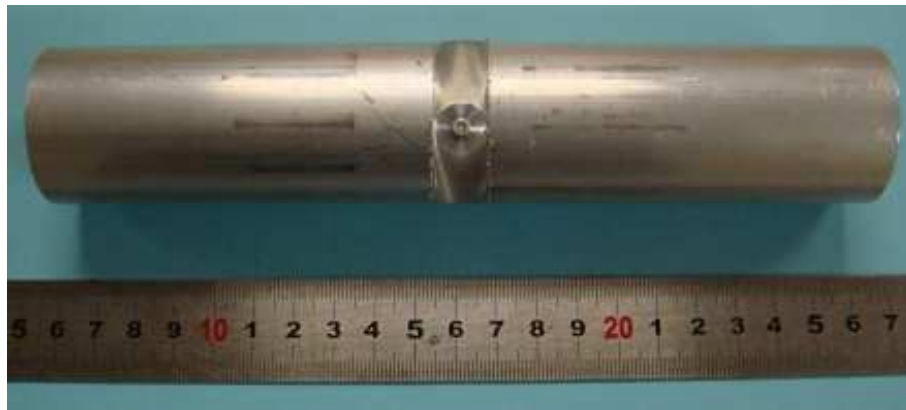
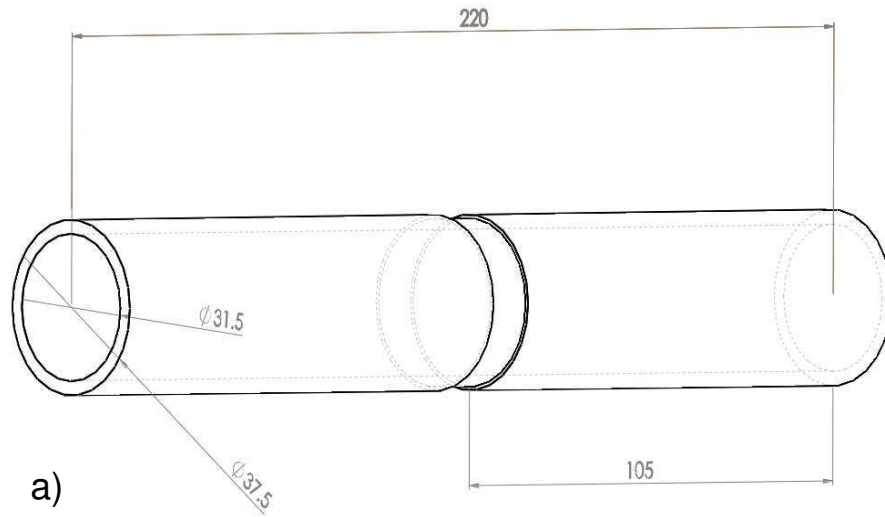


Figure 3 Sequence of events required in making a sound FS weld in the 6082-T6 aluminium tubes.



Figure 4 Influence of the weld process parameters of plunge depth, rotational feed rate and tool rotational speed on the quality of weld surface finish.



b)

Figure 5 a) Approximate dimensions of the tubular fatigue specimens. b) Image showing a typical welded specimen.

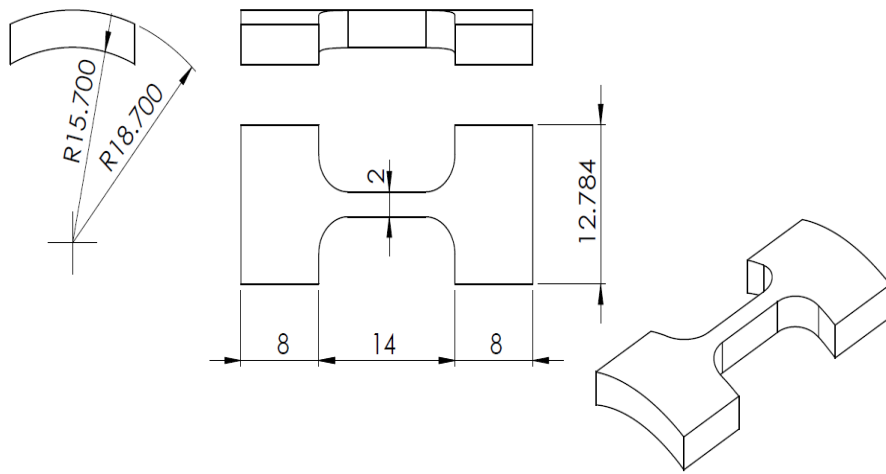


Figure 6 Microtensile specimen geometry; the curved surface requires support during clamping and testing.

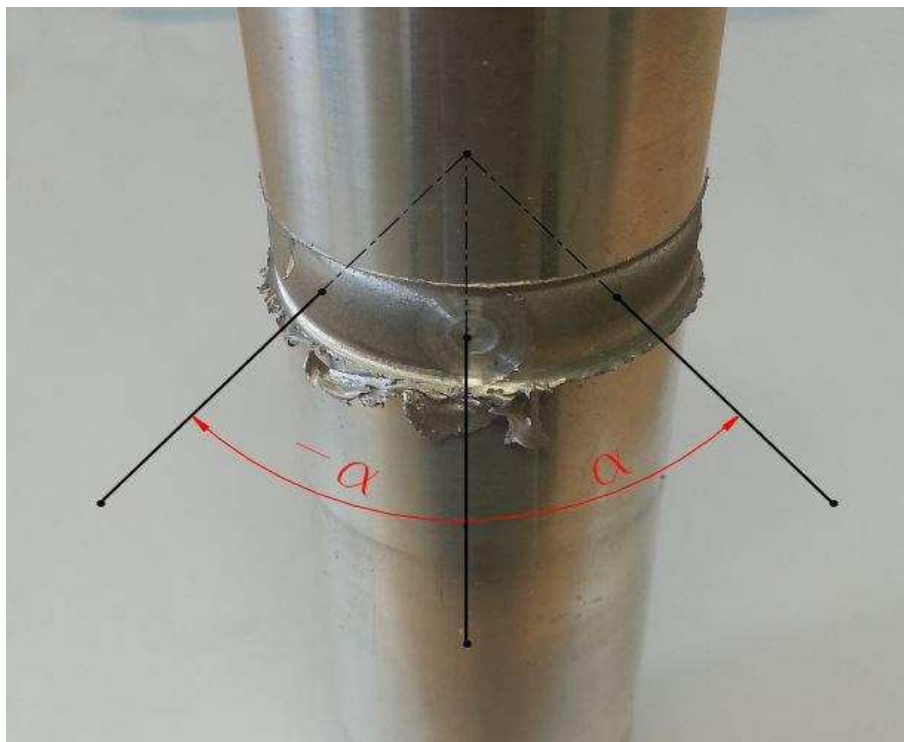


Figure 7 Coordinate system used to define the crack initiation sites.

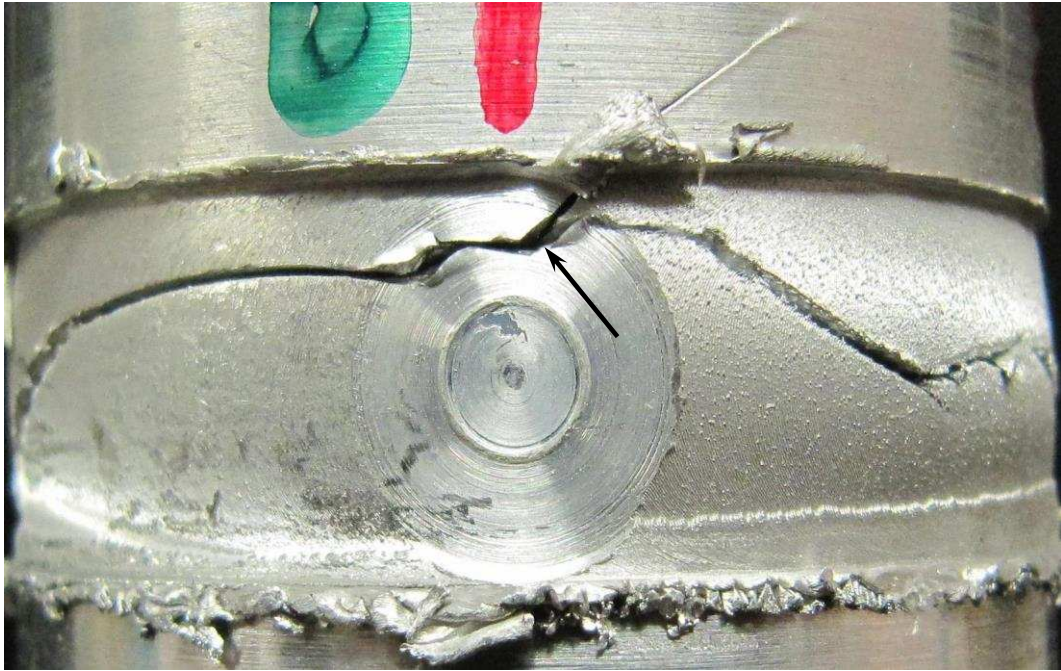


Figure 8a Crack initiation site (marked with arrow) in specimen T4 tested in torsion at  $R = -1$  with a shear stress amplitude of 75 MPa.



Figure 8b Crack initiation site in specimen T22 tested in torsion at  $R = -1$  with a shear stress amplitude of 133 MPa. The crack runs around the undercut groove on the advancing side of the weld. This is the most common mode of failure in both tension and torsion fatigue specimens.



Figure 9 In-phase tension-torsion fatigue test (IPh21) showing that the crack has initiated along the tool shoulder groove on the retreating side and then moved across to the advancing side of the weld.

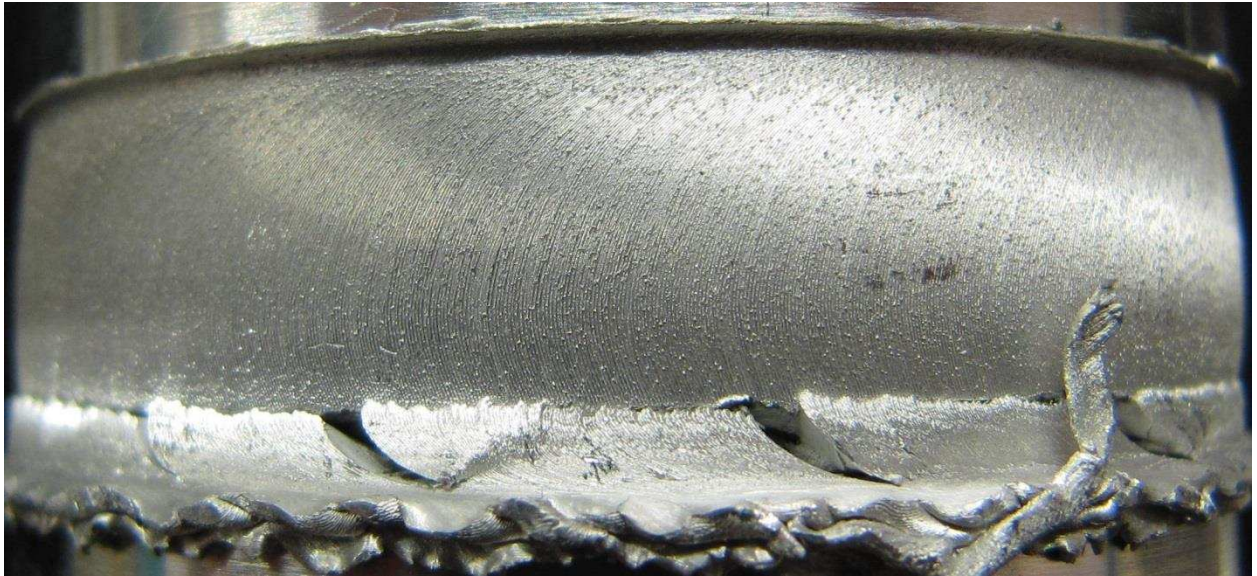


Figure 10 Multiple crack initiation sites observed in torsion fatigue at  $R = 0$ . This image shows specimen T23.



Figure 11 Multiple crack initiation appears to be exacerbated at lower torsional stress and hence longer fatigue lives. This image shows specimen T16.



Figure 12 Certain tension-torsion specimens showed crack initiation associated with the stop-start position. This is specimen IPh8.

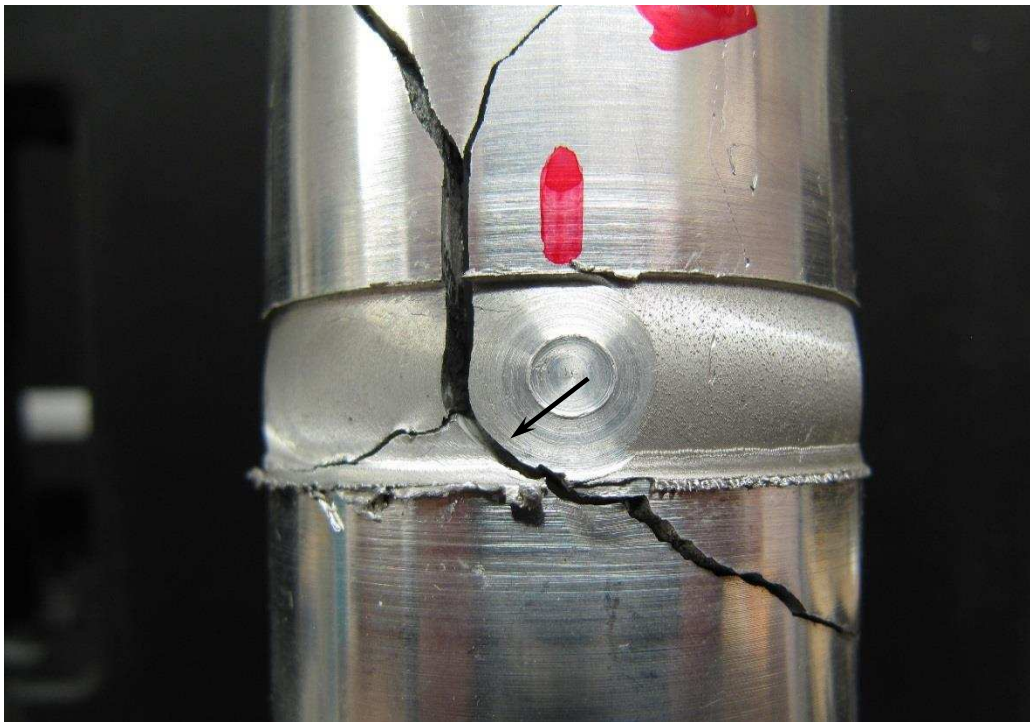


Figure 13 Specimen T6 which showed classic shear crack bifurcation. The arrow marks the crack initiation site which is also associated with the stop-start position.



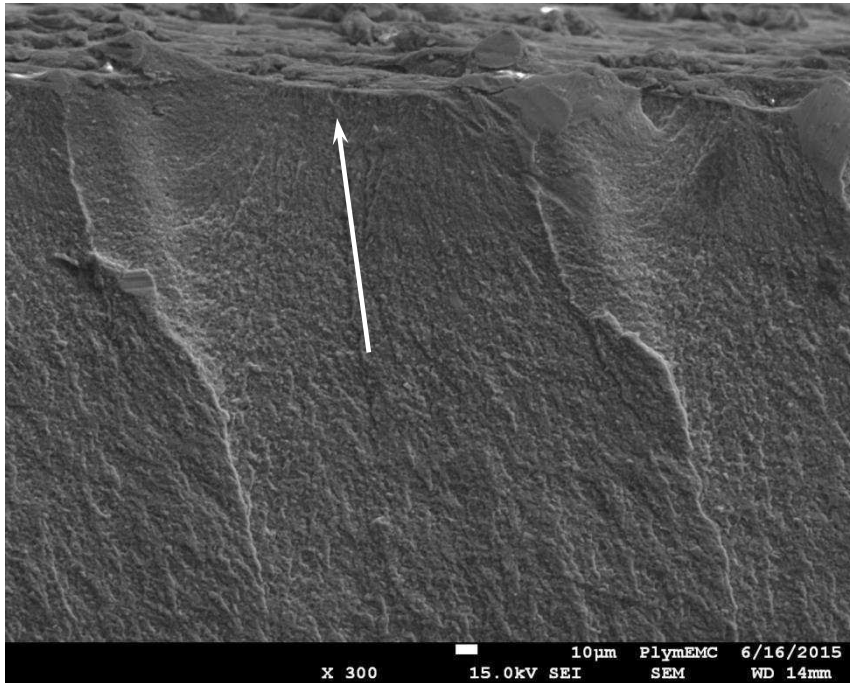


Figure 14 SEM fractograph showing crack initiation (arrow) between surface tool marks in tensile fatigue specimen W121. The small white bar at the bottom of the picture is a 10  $\mu\text{m}$  marker.

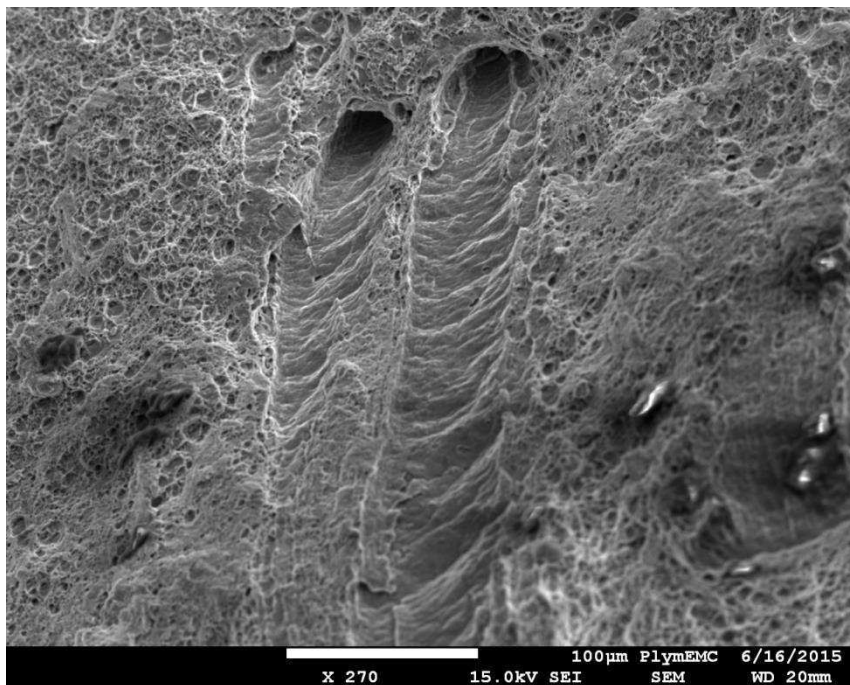


Figure 15 Wormhole defects on the fast fracture region of tensile fatigue specimen W117. As expected the fracture mechanism is microvoid coalescence.

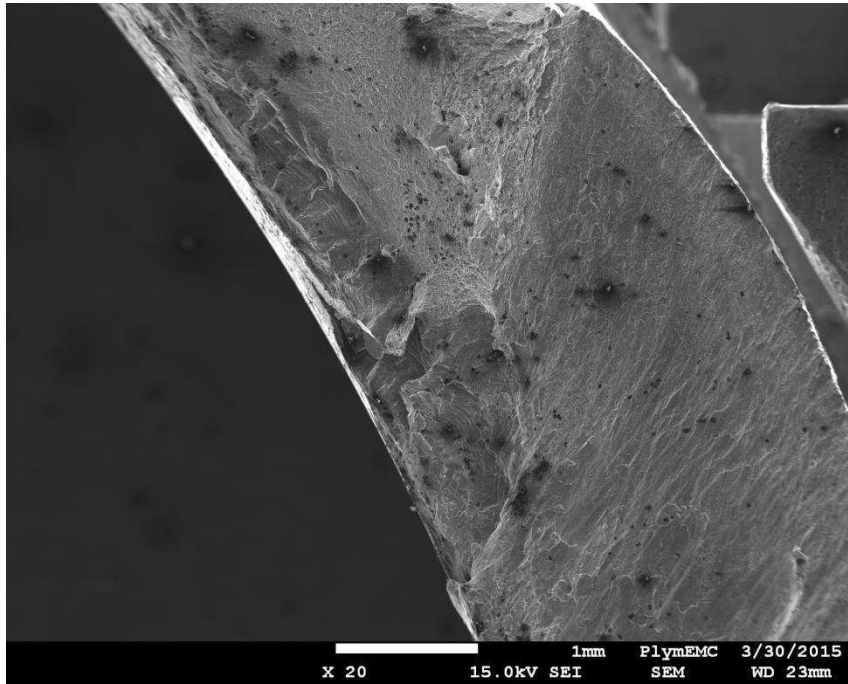


Figure 16 Clear evidence of initiation of the primary fatigue crack from the outer edge of specimen IPh2 can be seen at the upper right hand corner in this image.

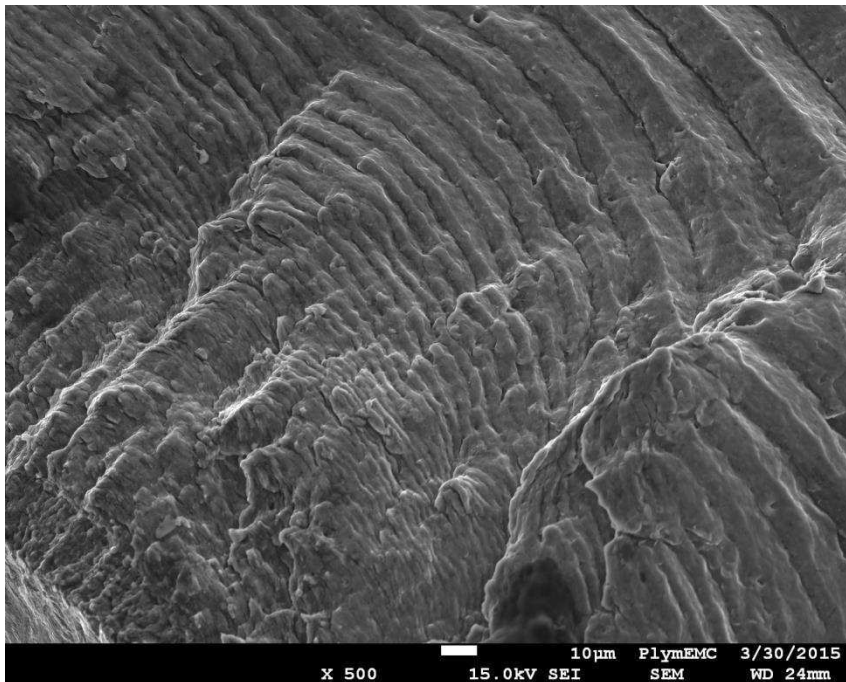


Figure 17 A smaller secondary site of fatigue crack initiation is present at the inner edge of tube specimen IPh2 in the lower left corner of this image.

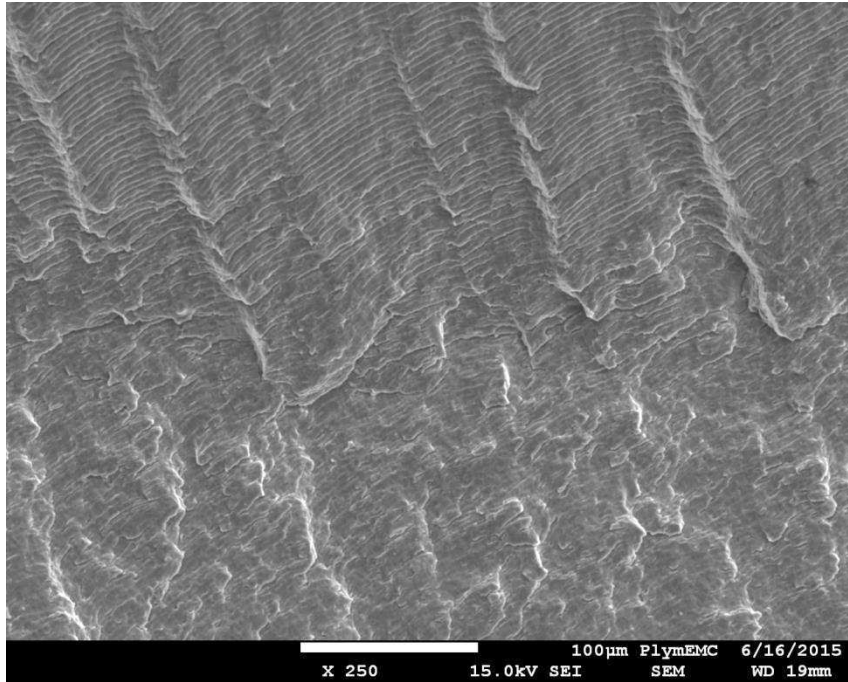


Figure 18 The mechanism of fatigue crack growth was by ductile striation formation; this image shows the fracture surface on tensile fatigue specimen W130 and the crack growth direction is from the bottom of the image to the top.

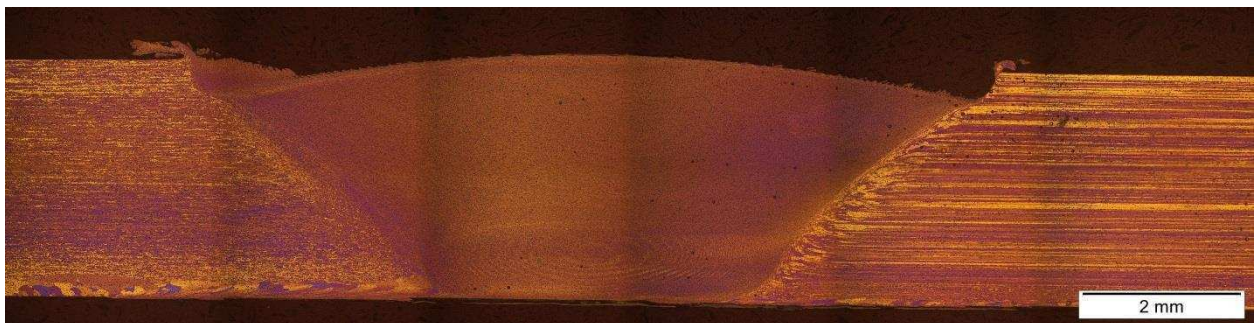


Figure 19 Polarised light metallographic montage showing the complete weld zone in specimen T6 tested in torsional fatigue.

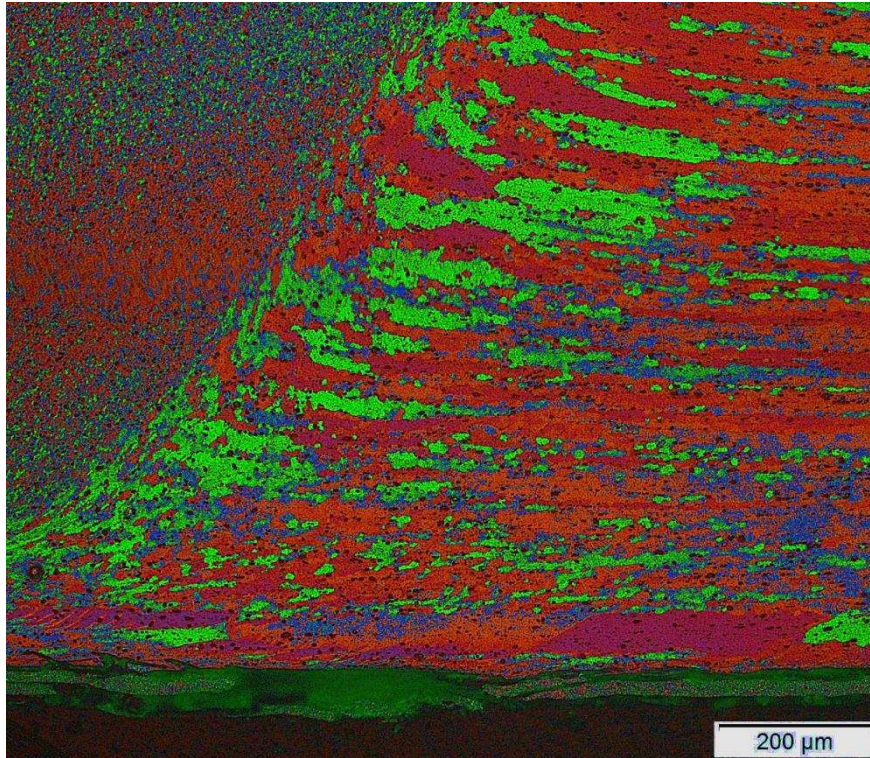


Figure 20 Polarised light micrograph showing the edge of the weld at 100x magnification.

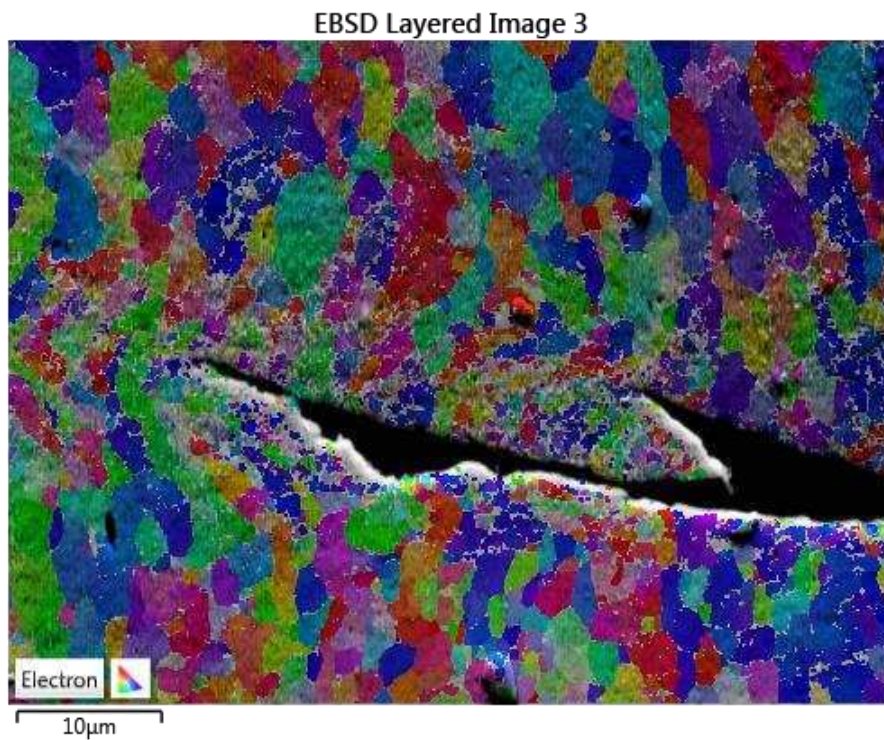


Figure 21 EBSD image showing the crack tip region in specimen T6 at 2,000x magnification.

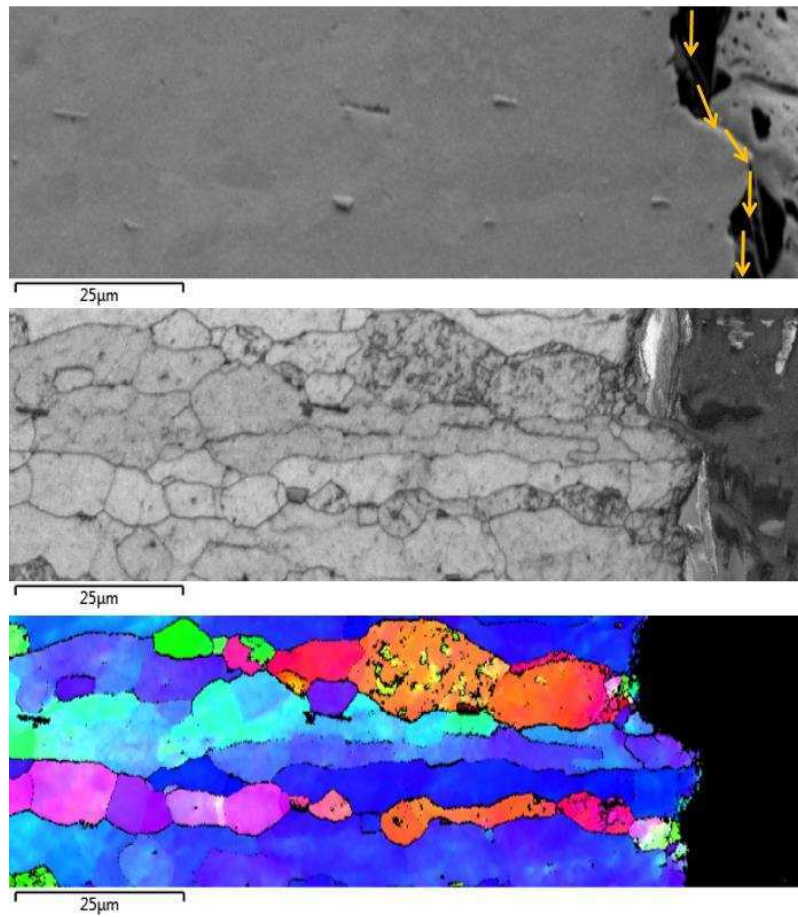


Figure 22 EBSD images of crack growth through the thickness of the tube wall. This shows is the heat-affected zone on the parent plate side of the crack and the crack growth direction is indicated in the top image.