

# Genetic heterogeneity in cholangiocarcinoma: a major challenge for targeted therapies

Giovanni Brandi<sup>1,2,5</sup>, Andrea Farioli<sup>3</sup>, Annalisa Astolfi<sup>2</sup>, Guido Biasco<sup>1,2</sup> and Simona Tavorari<sup>1,4</sup>

<sup>1</sup> Department of Experimental, Diagnostic and Specialty Medicine, S. Orsola-Malpighi University Hospital, Bologna, Italy

<sup>2</sup> "G. Prodi" Interdepartmental Center for Cancer Research (C.I.R.C.), University of Bologna, Bologna, Italy

<sup>3</sup> Department of Medical and Surgical Sciences, S. Orsola-Malpighi University Hospital, Bologna, Italy

<sup>4</sup> Center for Applied Biomedical Research (C.R.B.A.), S. Orsola-Malpighi University Hospital, Bologna, Italy

<sup>5</sup> GICO- Italian Group of Cholangiocarcinoma, Italy

**Correspondence to:** Giovanni Brandi, **email:** giovanni.brandi@unibo.it

**Keywords:** cholangiocarcinoma, genetic heterogeneity, targeted therapies

**Received:** March 18, 2015

**Accepted:** June 11, 2015

**Published:** June 19, 2015

This is an open-access article distributed under the terms of the Creative Commons Attribution License, which permits unrestricted use, distribution, and reproduction in any medium, provided the original author and source are credited.

## ABSTRACT

**Cholangiocarcinoma (CC) encompasses a group of related but distinct malignancies whose lack of a stereotyped genetic signature makes challenging the identification of genomic landscape and the development of effective targeted therapies.**

**Accumulated evidences strongly suggest that the remarkable genetic heterogeneity of CC may be the result of a complex interplay among different causative factors, some shared by most human cancers while others typical of this malignancy.**

**Currently, considerable efforts are ongoing worldwide for the genetic characterization of CC, also using advanced technologies such as next-generation sequencing (NGS). Undoubtedly this technology could offer an unique opportunity to broaden our understanding on CC molecular pathogenesis. Despite this great potential, however, the high complexity in terms of factors potentially contributing to genetic variability in CC calls for a more cautionary application of NGS to this malignancy, in order to avoid possible biases and criticisms in the identification of candidate actionable targets. This approach is further justified by the urgent need to develop effective targeted therapies in this disease.**

**A multidisciplinary approach integrating genomic, functional and clinical studies is therefore mandatory to translate the results obtained by NGS into effective targeted therapies for this orphan disease.**

## TO THE EDITORS

Cholangiocarcinoma (CC) is a complex disease encompassing a group of related but distinct malignancies that may emerge at different anatomic sites along the intrahepatic and extrahepatic biliary tree [1].

CC treatment represents a major challenge for oncologists. To date radical surgery, suitable only in a limited number of patients, has offered the only chance of cure [2]. Systemic treatment is confined to chemotherapy, whose front-line backbone is gemcitabine in combination with a platinum compound, while the efficacy of second-

line remains to be established [3, 4].

The addition of targeted therapies in CC management was expected to broaden the therapy options and thereby improve the survival rate of these patients. However, targeted therapies have failed or shown only marginal benefits in several clinical trials with different drugs alone or combination with chemotherapy (Table 1 and 2) [5-18, reviewed in 19]. The development of effective targeted therapies in CC is challenging not only because most of the clinical trials have been designed for a mixed cohort of biliary tract cancer patients (thus frequently under-powering the impact of CC patients),

**Table 1: Clinical trials with targeted therapies, alone or in combination with chemotherapy, in CC**

THERAPEUTIC REGIMEN	TARGET	PHASE	N° OF PATIENTS	END-POINTS: results (months)
SORAFENIB <sup>(5)</sup>	VEGFR-2/-3, PDGFR-β, B-Raf, C-Raf	II	46	PFS: 2.3 OS: 4.4
SUNITINIB <sup>(6)</sup>	VEGFR, PDGFR and KIT	II	56	TTP: 1.7
LAPATINIB <sup>(7)</sup>	EGFR, Her2/Neu	II	57	PFS: 1.8 OS: 5.2
SELUMETINIB <sup>(8)</sup>	MEK1, MEK2	II	88	PFS: 3.7 OS: 9.8
GEMOX + BEVACIZUMAB <sup>(9)</sup>	VEGF	II	35	PFS : 7.0
GEMOX + CETUXIMAB <sup>(10)</sup>	EGFR	II	76	PFS: 6.1 OS: 11.0
GEMOX + PANITUMUMAB <sup>(11)</sup>	EGFR	II	46	PFS: 8.3 OS: 10.0
GEMOX + ERLOTINIB <sup>(12)</sup>	EGFR	III	135	PFS: 5.8 OS: 9.5
DOCETAXEL + ERLOTINIB <sup>(13)</sup>	EGFR	II	11	OS: 5.7
GEMCITABINE + CETUXIMAB <sup>(14)</sup>	EGFR	II	44	OS: 13.5
BEVACIZUMAB + ERLOTINIB <sup>(15)</sup>	VEGF, EGFR	II	49	OS: 9.9 TTP: 4.4
SORAFENIB + ERLOTINIB <sup>(16)</sup>	VEGFR-2/-3, PDGFR-β, B-Raf, C-Raf, EGFR	II	34	PFS: 2.0 OS: 6.0
CISPLATIN/GEMCITABINE + SORAFENIB <sup>(17)</sup>	VEGFR-2/-3, PDGFR-β, B-Raf, C-Raf	II	39	PFS: 6.5 OS: 14.4

Abbreviations: GEMOX, gemcitabine and oxaliplatin; PFS, progression-free survival; OS, overall survival; TTP, time to progression.

but also because of the underlying genetic variability of the disease, whose lack of a stereotyped genetic signature makes difficult the identification of potential actionable targets [20].

Currently, considerable efforts are ongoing worldwide for the genetic characterization of CC, also using advanced technologies such as next-generation sequencing (NGS). NGS has opened the possibility to identify the full repertoire of tumor-borne genetic alterations [21, 22] and, to date, it has been successfully applied to simple models of human cancers, namely pediatric tumors. Here the limited number of carried genetic events, due to the relative short-term latency of tumor onset, the fewer associated risk factors and the frequent development of these malignancies in non self-renewing tissues, has positively impacted on molecular characterization and, ultimately, on the diagnostic work-up of the disease [23].

The genetic characterization of adult solid tumors is

more complex. The many mutational events accumulated during the disease course can indeed hamper the discrimination between driver and passenger mutations and hence the identification of the mutational landscape in these cancers.

An even more complex scenario probably occurs in CC. Although some studies have focused on the genetic characterization of CC, the overall molecular pathogenesis of this malignancy still remains poorly defined. Recent findings suggest that this process may involve a multitude of mutational events, including mutations in KRAS, TP53, BRAF, PTEN, SMAD4, IDH1, IDH2, BAP1, ARID1A and PBRM1 genes, as well as FGFR translocations [24-37]. Some of these mutational events have been also implicated in CC prognosis. In particular, BAP1 and PBRM1 mutations have been associated with bone metastases and worse survival in extrahepatic CC (ECC), while KRAS and TP53 mutations, as well as loss of PTEN expression, with worse survival in intrahepatic CC (ICC)

**Table 2: Clinical trials with targeted therapies, alone or in combination with chemotherapy, currently in development in CC**

THERAPEUTIC REGIMEN	TARGET	PHASE	ClinicalTrials.gov Identifier
TRASTUZUMAB	HER2/neu	II	NCT00478140
MK2206	AKT	II	NCT01425879
EVEROLIMUS	mTOR	II	NCT00973713
REGORAFENIB	VEGFR1-3, c-KIT, TIE-2, PDGFR- $\beta$ , C-Raf, B-Raf, p38 MAPK, FGFR-1,	II	NCT02115542
GEMCITABINE + SORAFENIB	VEGFR-2/-3, PDGFR- $\beta$ , B-Raf, C-Raf	II	NCT00661830
GEMOX + SORAFENIB	VEGFR-2/-3, PDGFR- $\beta$ , B-Raf, C-Raf	I/II	NCT00955721
GEMOX + BINIMETINIB	MEK1, MEK2	I	NCT02105350
PANITUMUMAB + GEMCITABINE/IRINOTECAN	EGFR	II	NCT00948935
AFATINIB + GEMCITABINE/CISPLATIN	HER2/EGFR	I	NCT01679405
BINIMETINIB + GEMCITABINE/CISPLATIN	MEK1, MEK2	I/II	NCT01828034
EVEROLIMUS + GEMCITABINE/CISPLATIN	mTOR	I	NCT00949949
SELUMETINIB + GEMCITABINE/CISPLATIN	MEK1, MEK2	I/II	NCT01242605
CEDIRANIB + GEMCITABINE/CISPLATIN	VEGFR-1, VEGFR-3, VEGFR-2,	II/III	NCT00939848
CEDIRANIB MALEATE + FOLFOX 6	VEGFR-1, VEGFR-3, VEGFR-2,	II	NCT01229111
(GEMCITABINE, OXALIPLATIN, CAPECITABINE) + PANITUMUMAB OR BEVACIZUMAB	EGFR, VEGF	II	NCT01206049

Abbreviations: GEMOX, gemcitabine and oxaliplatin; nFOLFOX6, folinic acid-fluorouracil-oxaliplatin-6

[32, 38, 39]. The prevalence of these molecular alterations, however, varies among the studies and definitive results are still lacking. Nonetheless, it is clearly emerging that ICC and ECC represent two distinct tumors arising from different genetic backgrounds [31, 32].

Accumulating evidence strongly supports the notion that the remarkable genetic heterogeneity of CC may be the result of a complex interplay among different factors, some shared by most human cancers, while others typical of this malignancy.

Recent findings suggest that the large number (probably the highest among all human malignancies) of established or putative risk factors associated with CC (Table 3) [40-47, reviewed in 48] may play a pivotal role in driving genetic heterogeneity in this disease. In this regard, a differential mutation pattern between ICC developing on chronic advanced disease and ICC arising on normal liver has been reported [34]. In particular, an opposite mutation rate (higher for EGFR and lower for KRAS, MLH1 and GNAS genes) has been observed in ICC with chronic advanced disease compared to ICC with normal liver, while PIK3CA, PTEN, CDKN2A and

TP53 mutations were found only in ICC developing on normal liver. Furthermore, whole-exome sequencing analysis between CCs linked to *O. viverrini* infection and CCs not related to such exposure has identified two distinct mutational patterns in the two subgroups, with a major frequency of BAP1, IDH1 and IDH2 mutation in non-*O. viverrini*-related CCs and a major mutation rate in TP53, KRAS, SMAD4, MLL3, ROBO2, RNF43 and PEG3 genes in *O. viverrini*-related CCs, respectively [26]. Mutations of RNF43 and PEG3 genes, in particular, have been shown to activate the WNT/ $\beta$ -catenin signaling, leading to chromosomal instability and cell proliferation [49, 50]. Activation of this pathway has been reported in CC (particularly in ICC), a phenomenon that may be linked not only to mutations occurring in these two genes, but also to the presence of inflammatory macrophages in the stroma surrounding the tumor, which sustain WNT/ $\beta$ -catenin signaling through the production of WNT ligands [51, 52]. The frequent pathological activation of this pathway in CC reinforces the notion that WNT/ $\beta$ -catenin signaling could play a pivotal role in CC carcinogenesis and represent a potential therapeutic target in this disease,

**Table 3: Established and putative risk factors for intra-and extrahepatic CC**

Intrahepatic CC			Extrahepatic CC		
	Characteristics of the association			Characteristics of the association	
Risk factor	Strength	Level of evidence	Risk factor	Strength	Level of evidence
Bile duct cysts <sup>(40)</sup>	+++	+++	Bile duct cysts <sup>(40)</sup>	+++	+++ <sup>a</sup>
PSC <sup>(40)</sup>	++++ <sup>a</sup>	++++ <sup>a</sup>	PSC <sup>(40)</sup>	++++ <sup>a</sup>	++++ <sup>a</sup>
Caroli's disease <sup>(41)</sup>	++++ <sup>a</sup>	++++ <sup>a</sup>	Caroli's disease <sup>(41)</sup>	++++ <sup>a</sup>	++++ <sup>a</sup>
Hepatoolithiasis <sup>(40)</sup>	+++	+++	Choledocholithiasis <sup>(40)</sup>	+++	++
Choledocholithiasis <sup>(40)</sup>	+++	++	Cholangitis <sup>(40)</sup>	+++	++
Cholangitis <sup>(40)</sup>	+++	++	O. viverrini <sup>(40)</sup>	++++ <sup>a</sup>	++++ <sup>a</sup>
O. viverrini <sup>(40)</sup>	++++ <sup>a</sup>	++++ <sup>a</sup>	C. sinensis <sup>(40)</sup>	++++ <sup>a</sup>	++++ <sup>a</sup>
C. sinensis <sup>(40)</sup>	++++ <sup>a</sup>	++++ <sup>a</sup>	Cirrhosis <sup>(43)</sup>	++	++
Cirrhosis <sup>(43)</sup>	+++	+++	HBV <sup>(44)</sup>	+	+
HBV <sup>(44)</sup>	++	+++	HCV <sup>(42)</sup>	+	+
HCV <sup>(43)</sup>	++	+++	Cigarette smoking <sup>(43)</sup>	+	+
NASH <sup>(58)</sup>	+	+	Diabetes mellitus <sup>(43)</sup>	+	++
Hemochromatosis <sup>(45)</sup>	?	++	Thorotrast <sup>(40)</sup>	++++ <sup>a</sup>	++++ <sup>a</sup>
Wilson's disease <sup>(46)</sup>	?	++		+	+
Cigarette smoking <sup>(43)</sup>	+	+			
Alcohol <sup>(43)</sup>	++	++			
Obesity <sup>(43)</sup>	+	++			
Diabetes mellitus <sup>(43)</sup>	+	++			
Thorotrast <sup>(40)</sup>	++++ <sup>a</sup>	++++ <sup>a</sup>			
Asbestos <sup>(47)</sup>	++	+			

Abbreviations: HBV, hepatitis B virus; HCV hepatitis C virus; NASH, non-alcoholic steatohepatitis; PSC, primary sclerosing cholangitis.

<sup>a</sup> Available studies did not distinguish between ICC and ECC

NB: + = weak association/weak evidence; ++ = moderate association/moderate evidence; +++ = strong association/strong evidence.

as recently reported [52].

The induction of distinct genetic profiles in CC by different risk factors could rely not only on the different carcinogenetic mechanisms driven by such risk factors, but also on the existence along the biliary tree of two distinct stem cell niches, the canals of Hering harboring hepatic stem cells (HpSCs) and the peribiliary glands harboring biliary tree stem/progenitor cells (BTSCs) [53-55, reviewed in 56]. Cell populations from HpSCs and BTSCs lineages have been hypothesized to represent distinct candidate cells of origin (the normal cells that acquire the first cancer-initiating mutations) during CC carcinogenesis, susceptible to distinct risk factors and responsible for the development of the different ICC and ECC subtypes [53-55, reviewed in 56]. In particular, it is been suggested that the BTSC lineage may be activated under pathological conditions affecting the large intrahepatic and extrahepatic bile ducts (including liver flukes, cholangitis, primary sclerosing cholangitis, hepatolithiasis, etc.), giving rise to large bile duct pure

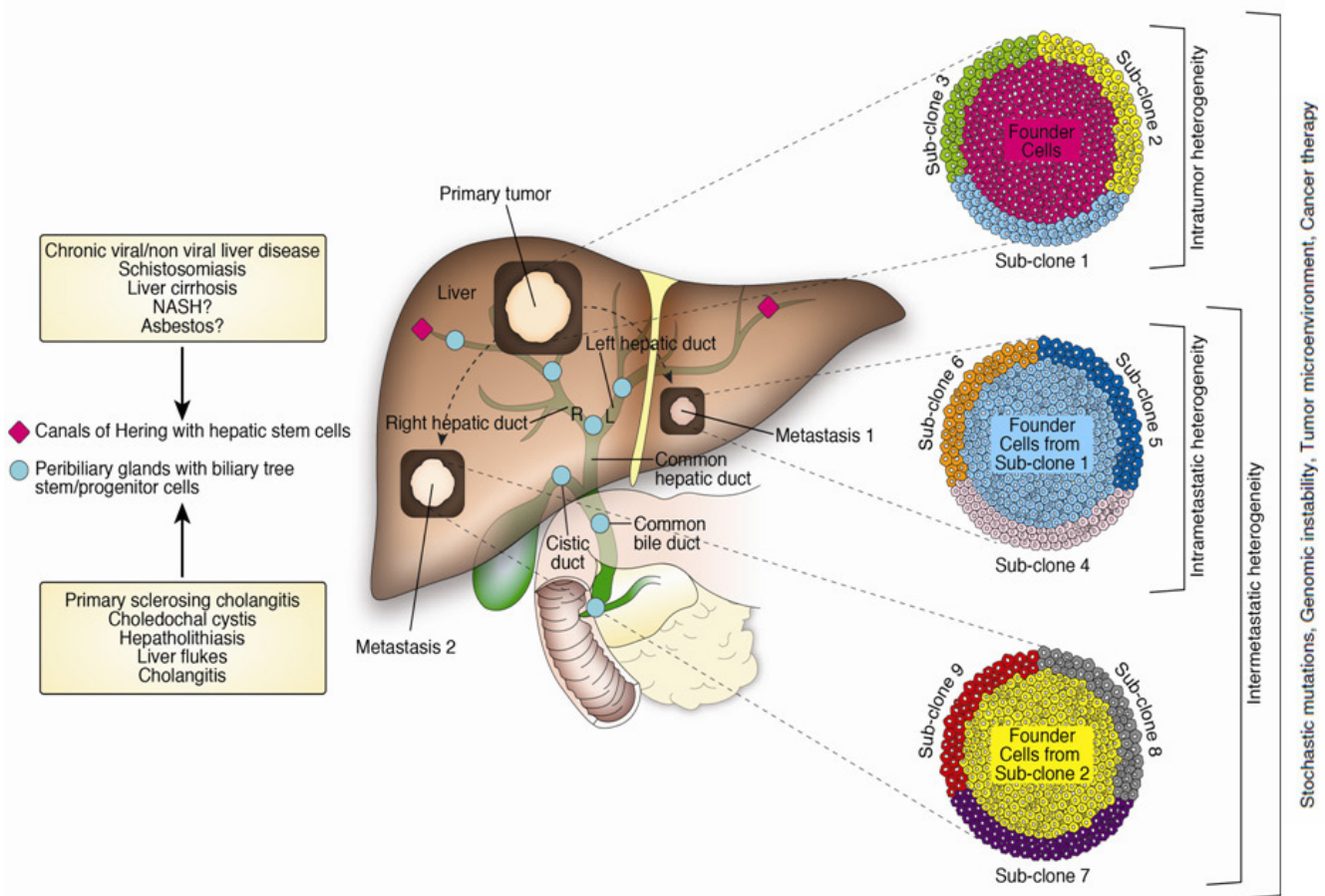
mucin secreting ICC and ECC. Conversely, the hHpSC lineage has been suggested to be activated in response to parenchymal liver diseases (such as chronic viral/non viral liver disease, schistosomiasis and liver cirrhosis) and to be involved in the development of combined hepatocellular carcinoma-ICC, bile ductular ICC and mixed ICC (this last form being characterized by areas of focal hepatocytic differentiation, ductular reaction and mucin-secreting adenocarcinoma) [53-55, reviewed in 56, 57]. This stem cell compartment is probably activated also during non-alcoholic steatohepatitis (NASH) and asbestos exposure, as these two risk factors are exclusively associated with the development of ICC [47, 58].

The genetic characterization of CC may be further complicated by the presence of tumor clonal heterogeneity (especially in the case of mixed ICC, due to the presence of mixed differentiation features), a hallmark of almost all human cancers [59-65]. Indeed, founder cells harboring most of the tumor-borne genetic mutations typically coexist with genetically distinct

tumor sub-clones, intermixed or spatially separated across the different topographic regions of the primary tumor (intratumoral heterogeneity), and the same metastasis (intrametastatic heterogeneity). Genetic variability can also occur among metastases derived from the same primary tumor (intermetastatic heterogeneity), since the genetically different sub-clones of the primary tumor can give rise to distinct lesions at the metastatic site [59-65]. This complex picture can be further exacerbated by the highly dynamic nature of the tumor itself. Tumor clonal architecture and genetic profile evolve dynamically over time (probably following a branched, Darwinian evolutionary process) under the selective pressure of the tumor microenvironment and therapeutic context, and as a consequence of genomic instability and stochastic

mutational events occurring during DNA replication [59-67]. This last aspect could be particularly relevant in CC since the diagnosis, frequently late, often occurs when large macroscopic lesions have developed and tumor cells have therefore undergone many cell divisions.

The dynamic changes in time and in space of tumor subclonal composition may lead to an underestimated or biased identification of the mutational landscape in heterogeneous tumors if genetic characterization is carried out only on a single tumor biopsy [68]. This approach currently represents the standard of tumor diagnosis and the backbone of personalized therapy decisions and may significantly account for the high failure rate of some anti-cancer therapies. Sequencing of multiple tumor sites at different time points during the disease course (diagnosis,



**Figure 1: Overview of the main potential factors driving genetic heterogeneity in CC.** Genetic variability in CC could be the result of a complex interplay among several factors including: **a.** the existence of two genetically distinct stem cell niches along the biliary tree (the canals of Hering with hepatic stem cells and the peribiliary glands with biliary tree stem/progenitor cells), with a different susceptibility to risk factors; **b.** tumor clonal heterogeneity. Genetically distinct tumor cell sub-clones can coexist with founder cells harboring most of the tumor-borne genetic mutations, either in the primary tumor (intratumoral heterogeneity), or in the same metastasis (intrametastatic heterogeneity). Genetic variability can also occur among metastases derived from the same primary tumor, as the different sub-clones of the primary tumor can give rise to genetically distinct lesions at the metastatic site (intermetastatic heterogeneity); **c.** stochastic mutations and genomic instability. The large number of cell divisions required for cancer growth makes tumor cells prone to accumulate genomic alterations with a high frequency, due to random mutations occurring during DNA replication and deficiencies in the mechanisms involved in DNA repair; **d.** tumor microenvironment and cancer treatment. The tumor microenvironment and cancer therapy can induce fluctuations in tumor sub-clonal architecture and genetic profile by promoting the selective growth of sub-clones with a survival advantage within a given tumor microenvironment or a given therapeutic setting and by eradicating those with a less favorable survival advantage.

relapse and metastasis) has therefore been suggested to resolve, at least in part, spatial and temporal tumor clonal variability, and to better discriminate between mutational events in the trunk (occurring at early stages of tumor growth and detectable at all disease sites) or branches (occurring later during the development of tumor subclones and not detectable at all disease sites) of the tumor phylogenetic tree [67-69]. Such procedure would probably represent the best approach in CC, since this malignancy is very often characterized by multifocal lesions at the primary site even at diagnosis, but unfortunately it is not devoid of risks for the patient. More recently, genotyping of circulating tumor DNA fragments (the so-called “liquid biopsy”) is emerging as a promising and less invasive type of analysis for tracking tumor dynamics and monitoring genomic evolution in real time [70]. Such DNA fragments are indeed released in the bloodstream by tumor cells undergoing apoptosis/necrosis and harbor the same genetic alterations of the tumor itself, with the advantage that sampling of the blood is minimally invasive for the patient and can be carried out at any time during disease course. Further studies are needed, however, to establish whether circulating tumor DNA genotyping could represent an effective strategy for the management of cancer patients, including CC ones, in clinical practice.

Overall, the highly complex array of causative factors (summarized in Figure 1) potentially contributing to genetic variability in CC poses a challenge in capturing the genomic landscape of this disease. Despite the great potential of NGS, this technology should be therefore applied to CC genetic characterization with caution in order to avoid possible biases and criticisms in detecting driver mutations in CC carcinogenesis. This approach is further justified by the urgent need to better define potentially actionable targets in this disease. Although it is still an unresolved issue, the mutations in molecular pathways (including KRAS, mTOR, tyrosine kinase receptor signaling) driving the carcinogenesis of many human cancers suggest that these alterations may also drive CC carcinogenesis, opening the possibility to stratify CC patients into distinct molecular subgroups for targeted therapies [31].

Given the marked genetic variability of CC, it seems likely that the best chance of response could be achieved by a combination of drugs targeting different driver mutations in this disease. Obviously, the ideal therapeutic regimen would include drugs specifically tailored to the unique genetic make-up of the individual patient, which is the cornerstone of “true” personalized therapy in cancer treatment [71]. This approach represents the final goal of future precision medicine but, unfortunately, it is still not feasible in clinical practice (even in tumors whose genetic pathogenesis is well known), mainly because of the current lack of knowledge about the toxicity of some drug interactions and the difficulty of prescribing high cost

drugs whose refund cannot be guaranteed by regulatory entities. Therefore, the current selection of cancer patients likely to benefit from a specific targeted therapy is still based on tumor histology and on the analysis of a limited number of hotspot mutations.

More recently a new strategy, the so-called basket trial, suggests the use of targeted therapies exclusively on the basis of identified actionable targets, irrespective of tumor histology and other clinical/biological variables [72]. Despite the growing enthusiasm for this approach, the results of the CUSTOM basket trial have pointed out its potential limits [73]. Indeed, while a clinically significant overall response rate of 60% was reported in the subgroup of patients with the EGFR mutation who received erlotinib, the other 40% of patients did not respond, suggesting additional “hidden” oncogenic events may be responsible for treatment failure. Furthermore, selumetinib monotherapy did not achieve its primary endpoint in patients with RAS or RAF mutations. These findings strongly suggest that the disease-specific context cannot be easily bypassed, as it very often determines whether a candidate mutation represents a clinically valid endpoint. This is well known, for example, for the BRAF<sup>V600E</sup> mutation, which is associated with a clinical response to BRAF inhibitors in melanoma but not in colon cancer [74, 75]. *An excellent* clinical response to *doublet-targeted therapy with the BRAF and MEK inhibitors dabrafenib and trametinib* has also been reported in an ICC patient harboring this mutation [76]. *However, whether* BRAF<sup>V600E</sup> represents a driver mutation in ICC and whether other ICC patients with this mutation could benefit from treatment with BRAF inhibitors await clarification.

In summary, the identification of candidate actionable mutations in CC is challenging because of the many factors potentially contributing to genetic heterogeneity in this malignancy. Undoubtedly, NGS may offer an unique opportunity to broaden our understanding of CC molecular pathogenesis; however, a multidisciplinary approach integrating genomic, functional and clinical studies is mandatory to translate the results obtained into effective targeted therapies for this orphan disease.

## ACKNOWLEDGMENTS

The authors thank dr. A Prudence Collins for critical revision of the manuscript. GICO Members: Giuseppe Aprile, Stefano Cereda, Enrico Vasile, Giovanni Brandi, Francesco Leone, Lorenzo Fornaro, Daniele Santini, Sara Lonardi, Nicola Silvestris.

## FINANCIAL SUPPORT

This work was supported by a grant from Fundamental Oriented Research (RFO 2013), Alma Mater

Studiorum, University of Bologna, Bologna, Italy, to G. Brandi.

## CONFLICTS OF INTEREST

All the authors declare no competing financial interests.

None of the contents of this manuscript has been previously published or is under consideration elsewhere. All the authors read and approved the final version of the manuscript prior to submission.

## REFERENCES

1. Razumilava N, Gores GJ. Cholangiocarcinoma. *Lancet*. 2014; 383: 2168-2179.
2. Ercolani G, Vetrone G, Grazi GL, Aramaki O, Cescon M, Ravaioli M, Serra C, Brandi G, Pinna AD. Intrahepatic cholangiocarcinoma: primary liver resection and aggressive multimodal treatment of recurrence significantly prolong survival. *Ann Surg*. 2010; 252: 107-114.
3. Valle J, Wasan H, Palmer DH, Cunningham D, Anthony A, Maraveyas A, Madhusudan S, Iveson T, Hughes S, Pereira SP, Roughton M, Bridgewater J; ABC-02 Trial Investigators. Cisplatin plus gemcitabine versus gemcitabine for biliary tract cancer. *N Engl J Med*. 2010; 362: 1273-1281.
4. Fornaro L, Cereda S, Aprile G, Di Girolamo S, Santini D, Silvestris N, Lonardi S, Leone F, Milella M, Vivaldi C, Belli C, Bergamo F, Lutrino SE, et al. Multivariate prognostic factors analysis for second-line chemotherapy in advanced biliary tract cancer. *Br J Cancer*. 2014; 110 :2165-2169.
5. Bengala C, Bertolini F, Malavasi N, Boni C, Aitini E, Dealis C, Zironi S, Depenni R, Fontana A, Del Giovane C, Luppi G, Conte P. Sorafenib in patients with advanced biliary tract carcinoma: a phase II trial. *Br J Cancer*. 2010;102:68-72.
6. Yi JH, Thongprasert S, Lee J, Doval DC, Park SH, Park JO, Park YS, Kang WK, Lim HY. A phase II study of sunitinib as a second-line treatment in advanced biliary tract carcinoma: a multicentre, multinational study. *Eur J Cancer*. 2012; 48:196-201.
7. Ramanathan RK, Belani CP, Singh DA, Tanaka M, Lenz HJ, Yen Y, Kindler HL, Iqbal S, Longmate J, Mack PC, Lurje G, Gandour-Edwards R, Dancey J, Gandara DR. A phase II study of lapatinib in patients with advanced biliary tree and hepatocellular cancer. *Cancer Chemother Pharmacol*. 2009; 64:777-783.
8. Bekaii-Saab T, Phelps MA, Li X, Saji M, Goff L, Kauh JS, O'Neil BH, Balsom S, Balint C, Liersemann R, Vasko VV, Bloomston M, Marsh W, Doyle LA, Ellison G, Grever M, Ringel MD, Villalona-Calero MA. Multi-institutional phase II study of selumetinib in patients with metastatic biliary cancers. *J Clin Oncol*. 2011; 29:2357-2363.
9. Zhu AX, Meyerhardt JA, Blaszkowsky LS, Kambadakone AR, Muzikansky A, Zheng H, Clark JW, Abrams TA, Chan JA, Enzinger PC, Bhargava P, Kwak EL, Allen JN, et al. Efficacy and safety of gemcitabine, oxaliplatin, and bevacizumab in advanced biliary-tract cancers and correlation of changes in 18-fluorodeoxyglucose PET with clinical outcome: a phase 2 study. *Lancet Oncol*. 2010; 11:48-54.
10. Malka D, Cervera P, Foulon S, Trarbach T, de la Fouchardière C, Boucher E, Fartoux L, Faivre S, Blanc JF, Viret F, Assenat E, Seufferlein T, Herrmann T, et al. Gemcitabine and oxaliplatin with or without cetuximab in advanced biliary-tract cancer (BINGO): a randomised, open-label, non-comparative phase 2 trial. *Lancet Oncol*. 2014; 15:819-828.
11. Jensen LH, Lindebjerg J, Ploen J, Hansen TF, Jakobsen A. Phase II marker-driven trial of panitumumab and chemotherapy in KRAS wild-type biliary tract cancer. *Ann Oncol*. 2012; 23:2341-2346.
12. Lee J, Park SH, Chang HM, Kim JS, Choi HJ, Lee MA, Jang JS, Jeung HC, Kang JH, Lee HW, Shin DB, Kang HJ, Sun JM, et al. Gemcitabine and oxaliplatin with or without erlotinib in advanced biliary-tract cancer: a multicentre, open-label, randomised, phase 3 study. *Lancet Oncol*. 2012;13:181-188.
13. Chiorean EG, Ramasubbaiah R, Yu M, Picus J, Bufill JA, Tong Y, Coleman N, Johnston EL, Currie C, Loehrer PJ. Phase II trial of erlotinib and docetaxel in advanced and refractory hepatocellular and biliary cancers: Hoosier Oncology Group GI06-101. *Oncologist*. 2012;17:13.
14. Borbath I, Ceratti A, Verslype C, Demols A, Delaunoit T, Laurent S, Deleporte A, Vergauwe P, Van Maanen A, Sempoux C, Van Cutsem E, Van Laethem JL; Belgian Group of Digestive Oncology. Combination of gemcitabine and cetuximab in patients with advanced cholangiocarcinoma: a phase II study of the Belgian Group of Digestive Oncology. *Ann Oncol*. 2013;24:2824-2829.
15. Lubner SJ, Mahoney MR, Kolesar JL, Loconte NK, Kim GP, Pitot HC, Philip PA, Picus J, Yong WP, Horvath L, Van Hazel G, Erlichman CE, Holen KD. Report of a multicenter phase II trial testing a combination of biweekly bevacizumab and daily erlotinib in patients with unresectable biliary cancer: a phase II Consortium study. *J Clin Oncol*. 2010; 28:3491-3497.
16. El-Khoueiry AB, Rankin C, Siegel AB, Iqbal S, Gong IY, Micetich KC, Kayaleh OR, Lenz HJ, Blanke CD. S0941: a phase 2 SWOG study of sorafenib and erlotinib in patients with advanced gallbladder carcinoma or cholangiocarcinoma. *Br J Cancer*. 2014; 110:882-887.
17. Lee JK, Capanu M, O'Reilly EM, Ma J, Chou JF, Shia J, Katz SS, Gansukh B, Reidy-Lagunes D, Segal NH, Yu KH, Chung KY, Saltz LB, Abou-Alfa GK. A phase II study of gemcitabine and cisplatin plus sorafenib in patients with advanced biliary adenocarcinomas. *Br J Cancer*. 2013; 109:915-919.

18. Subbiah IM, Subbiah V, Tsimberidou AM, Naing A, Kaseb AO, Javle M, Fu S, Hong DS, Piha-Paul S, Wheler JJ, Hess KR, Janku F, Falchook GS, Wolff RA, Kurzrock R. Targeted therapy of advanced gallbladder cancer and cholangiocarcinoma with aggressive biology: eliciting early response signals from phase 1 trials. *Oncotarget*. 2013; 4:153-162.
19. Lamarca A, Barriuso J, Valle JW. Targeted therapies, in Brandi G and Ercolani G (ed): *Cholangiocarcinoma*. New York, NY, Nova Science Publishers, 2015, in press.
20. Zabron A, Edwards RJ, Khan SA. The challenge of cholangiocarcinoma: dissecting the molecular mechanisms of an insidious cancer. *Dis Model Mech*. 2013; 6: 281-292.
21. Metzker ML. Sequencing technologies-the next generation. *Nat Rev Genet*. 2010; 11: 31-46.
22. Koboldt DC, Steinberg KM, Larson DE, Wilson RK, Mardis ER. The next-generation sequencing revolution and its impact on genomics. *Cell*. 2013; 155: 27-38.
23. Schuback HL, Arceci RJ, Meshinchi S. Somatic characterization of pediatric acute myeloid leukemia using next-generation sequencing. *Semin Hematol*. 2013; 50: 325-332.
24. Andersen JB, Spee B, Blechacz BR, Avital I, Komuta M, Barbour A, Conner EA, Gillen MC, Roskams T, Roberts LR, Factor VM, Thorgeirsson SS. Genomic and genetic characterization of cholangiocarcinoma identifies therapeutic targets for tyrosine kinase inhibitors. *Gastroenterology*. 2012; 142: 1021-1031.
25. Borger DR, Tanabe KK, Fan KC, Lopez HU, Fantin VR, Straley KS, Schenkein DP, Hezel AF, Ancukiewicz M, Liebman HM, Kwak EL, Clark JW, Ryan DP, et al. Frequent mutation of isocitrate dehydrogenase (IDH)1 and IDH2 in cholangiocarcinoma identified through broad-based tumor genotyping. *Oncologist*. 2012; 17: 72-79.
26. Chan-On W, Nairismägi ML, Ong CK, Lim WK, Dima S, Pairojkul C, Lim KH, McPherson JR, Cutcutache I, Heng HL, Ooi L, Chung A, Chow P, et al. Exome sequencing identifies distinct mutational patterns in liver fluke-related and non-infection-related bile duct cancers. *Nat Genet*. 2013; 45: 1474-1478.
27. Jiao Y, Pawlik TM, Anders RA, Selaru FM, Streppel MM, Lucas DJ, Niknafs N, Guthrie VB, Maitra A, Argani P, Offerhaus GJ, Roa JC, Roberts LR, et al. Exome sequencing identifies frequent inactivating mutations in BAP1, ARID1A and PBRM1 in intrahepatic cholangiocarcinomas. *Nat Genet*. 2013; 45: 1470-1473.
28. Voss JS, Holtegaard LM, Kerr SE, Fritcher EG, Roberts LR, Gores GJ, Zhang J, Highsmith WE, Halling KC, Kipp BR. Molecular profiling of cholangiocarcinoma shows potential for targeted therapy treatment decisions. *Hum Pathol*. 2013; 44: 1216-1222.
29. Sia D, Hoshida Y, Villanueva A, Roayaie S, Ferrer J, Tabak B, Peix J, Sole M, Tovar V, Alsinet C, Cornella H, Klotzle B, Fan JB, et al. Integrative molecular analysis of intrahepatic cholangiocarcinoma reveals 2 classes that have different outcomes. *Gastroenterology*. 2013; 144: 829-840.
30. Ross JS, Wang K, Gay L, Al-Rohil R, Rand JV, Jones DM, Lee HJ, Sheehan CE, Otto GA, Palmer G, Yelensky R, Lipson D, Morosini D, Hawryluk M, Catenacci DV, Miller VA, Churi C, Ali S, Stephens PJ. New routes to targeted therapy of intrahepatic cholangiocarcinomas revealed by next-generation sequencing. *Oncologist*. 2014; 19: 235-242.
31. Simbolo M, Fassan M, Ruzzenente A, Mafficini A, Wood LD, Corbo V, Melisi D, Malleo G, Vicentini C, Malpeli G, Antonello D, Sperandio N, Capelli P, et al. Multigene mutational profiling of cholangiocarcinomas identifies actionable molecular subgroups. *Oncotarget*. 2014; 5: 2839-2852.
32. Churi CR, Shroff R, Wang Y, Rashid A, Kang HC, Weatherly J, Zuo M, Zinner R, Hong D, Meric-Bernstam F, Janku F, Crane CH, Mishra L, Vauthey JN, Wolff RA, Mills G, Javle M. Mutation profiling in cholangiocarcinoma: prognostic and therapeutic implications. *PLoS One*. 2014; 9: e115383.
33. Zhu AX, Borger DR, Kim Y, Cosgrove D, Ejaz A, Alexandrescu S, Groeschl RT, Deshpande V, Lindberg JM, Ferrone C, Sempoux C, Yau T, Poon R, Popescu I, Bauer TW, Gamblin TC, Gigot JF, Anders RA, Pawlik TM. Genomic profiling of intrahepatic cholangiocarcinoma: refining prognosis and identifying therapeutic targets. *Ann Surg Oncol*. 2014; 21: 3827-3834.
34. Jang S, Chun SM, Hong SM, Sung CO, Park H, Kang HJ, Kim KP, Lee YJ, Yu E. High throughput molecular profiling reveals differential mutation patterns in intrahepatic cholangiocarcinomas arising in chronic advanced liver diseases. *Mod Pathol*. 2014; 27: 731-739.
35. Borad MJ, Champion MD, Egan JB, Liang WS, Fonseca R, Bryce AH, McCullough AE, Barrett MT, Hunt K, Patel MD, Young SW, Collins JM, Silva AC, et al. Integrated genomic characterization reveals novel, therapeutically relevant drug targets in FGFR and EGFR pathways in sporadic intrahepatic cholangiocarcinoma. *PLoS Genet*. 2014; 10: e1004135.
36. Patel T. New insights into the molecular pathogenesis of intrahepatic cholangiocarcinoma. *J Gastroenterol*. 2014; 49: 165-172.
37. Yang H, Lu X, Liu Z, Chen L, Xu Y, Wang Y, Wei G, Chen Y. FBXW7 suppresses epithelial-mesenchymal transition, stemness and metastatic potential of cholangiocarcinoma cells. *Oncotarget*. 2015; 6:6310-6325.
38. Chen MH, Chiang KC, Cheng CT, Huang SC, Chen YY, Chen TW, Yeh TS, Jan YY, Wang HM, Weng JJ, Chang PM, Liu CY, Li CP, et al. Antitumor activity of the combination of an HSP90 inhibitor and a PI3K/mTOR dual inhibitor against cholangiocarcinoma. *Oncotarget*. 2014; 5: 2372-2389.
39. Wang LJ, He CC, Sui X, Cai MJ, Zhou CY, Ma JL, Wu L, Wang H, Han SX, Zhu Q. MiR-21 promotes intrahepatic cholangiocarcinoma proliferation and growth *in vitro* and



- in vivo* by targeting PTPN14 and PTEN. *Oncotarget*. 2015; 6:5932-5946.
40. Tyson GL, El-Serag HB. Risk factors for CC. *Hepatology* 2011; 54: 173–184.
  41. Rustagi T, Dasanu CA. Risk factors for gallbladder cancer and cholangiocarcinoma: similarities, differences and updates. *J Gastrointest Cancer*. 2012; 43: 137-147.
  42. Welzel TM, Graubard BI, El-Serag HB, Shaib YH, Hsing AW, Davila JA, McGlynn KA. Risk factors for intrahepatic and extrahepatic cholangiocarcinoma in the United States: a population-based case-control study. *Clin Gastroenterol Hepatol*. 2007; 5: 1221-1228.
  43. Palmer WC, Patel T. Are common factors involved in the pathogenesis of primary liver cancers? A meta-analysis of risk factors for intrahepatic cholangiocarcinoma. *J Hepatol*. 2012; 57: 69-76.
  44. Li M, Li J, Li P, Li H, Su T, Zhu R, Gong J. Hepatitis B virus infection increases the risk of cholangiocarcinoma: a meta-analysis and systematic review. *J Gastroenterol Hepatol*. 2012; 27: 1561-1568.
  45. Morcos M, Dubois S, Bralet MP, Belghiti J, Degott C, Terris B. Primary liver carcinoma in genetic hemochromatosis reveals a broad histologic spectrum. *Am J Clin Pathol*. 2001; 116: 738-743.
  46. Walshe JM, Waldenström E, Sams V, Nordlinder H, Westermarck K. Abdominal malignancies in patients with Wilson's disease. *QJM*. 2003; 96: 657-662.
  47. Brandi G, Di Girolamo S, Farioli A, de Rosa F, Curti S, Pinna AD, Ercolani G, Violante FS, Biasco G, Mattioli S. Asbestos: a hidden player behind the cholangiocarcinoma increase? Findings from a case-control analysis. *Cancer Causes Control*. 2013; 24: 911-918.
  48. Farioli A, Brandi G. Etiology of cholangiocarcinoma, in Brandi G and Ercolani G (ed): *Cholangiocarcinoma*. New York, NY, Nova Science Publishers, 2015, in press
  49. Aoki K, Aoki M, Sugai M, Harada N, Miyoshi H, Tsukamoto T, Mizoshita T, Tatematsu M, Seno H, Chiba T, Oshima M, Hsieh CL, Taketo MM. Chromosomal instability by beta-catenin/TCF transcription in APC or beta-catenin mutant cells. *Oncogene*. 2007; 26:3511-3520;
  50. Jiang X, Yu Y, Yang HW, Agar NY, Frado L, Johnson MD. The imprinted gene PEG3 inhibits Wnt signaling and regulates glioma growth. *J Biol Chem*. 2010; 285:847284-80.
  51. Sugimachi K, Taguchi K, Aishima S, Tanaka S, Shimada M, Kajiyama K, Sugimachi K, Tsuneyoshi M. Altered expression of beta-catenin without genetic mutation in intrahepatic cholangiocarcinoma. *Mod Pathol*. 2001; 14:900-905.
  52. Boulter L, Guest RV, Kendall TJ, Wilson DH, Wojtacha D, Robson AJ, Ridgway RA, Samuel K, Van Rooijen N, Barry ST, Wigmore SJ, Sansom OJ, Forbes SJ. WNT signaling drives cholangiocarcinoma growth and can be pharmacologically inhibited. *J Clin Invest*. 2015; 125:1269-1285.
  53. Cardinale V, Carpino G, Reid L, Gaudio E, Alvaro D. Multiple cells of origin in cholangiocarcinoma underlie biological, epidemiological and clinical heterogeneity. *World J Gastrointest Oncol*. 2012; 4: 94-102.
  54. Cardinale V, Wang Y, Carpino G, Mendel G, Alpini G, Gaudio E, Reid LM, Alvaro D. The biliary tree--a reservoir of multipotent stem cells. *Nat Rev Gastroenterol Hepatol*. 2012; 9: 231-240.
  55. Guido Carpino, Vincenzo Cardinale, Lola Reid, Domenico Alvaro, Eugenio Gaudio. Cells of origin and cancer stem cells in cholangiocarcinoma. *Transl Gastrointest Cancer*. 2012; 1: 33-43.
  56. Tavolari S, Venturi M, Brandi G. Carcinogenesis, in Brandi G and Ercolani G (ed): *Cholangiocarcinoma*. New York, NY, Nova Science Publishers, 2015, in press
  57. Komuta M, Govaere O, Vandecaveye V, Akiba J, Van Steenberghe W, Verslype C, Laleman W, Pirenne J, Aerts R, Yano H, Nevens F, Topal B, Roskams T. Histological diversity in cholangiocellular carcinoma reflects the different cholangiocytes phenotypes. *Hepatology*. 2012; 55:1876-1888.
  58. Reddy SK, Hyder O, Marsh JW, Sotiropoulos GC, Paul A, Alexandrescu S, Marques H, Pulitano C, Barroso E, Aldrighetti L, Geller DA, Sempoux C, Herlea V, et al. Prevalence of nonalcoholic steatohepatitis among patients with resectable intrahepatic cholangiocarcinoma. *J Gastrointest Surg*. 2013; 17: 748-755.
  59. Marusyk A, Polyak K. Tumor heterogeneity: causes and consequences. *Biochim Biophys Acta*. 2010; 1805: 105-117.
  60. Greaves M and Maley CC. Clonal evolution in cancer. *Nature*. 2012; 481: 306-313.
  61. Yates LR, Campbell PJ. Evolution of the cancer genome. *Nat Rev Genet*. 2012; 13: 795-806.
  62. Marusyk A, Almendro V, Polyak K. Intra-tumor heterogeneity: a looking glass for cancer? *Nature*. 2012; 12: 323-332.
  63. Bedard PL, Hansen AR, Ratain MJ, Siu LL. Tumor heterogeneity in the clinic. *Nature*. 2013; 501: 355-363.
  64. Burrell RA, McGranahan N, Bartek J, Swanton C. The causes and consequences of genetic heterogeneity in cancer evolution. *Nature*. 2013; 501: 338-345.
  65. Vogelstein B, Papadopoulos N, Velculescu VE, Zhou S, Diaz LA Jr, Kinzler KW. Cancer genome landscapes. *Science*. 2013; 339: 1546-1558.
  66. Hiley C, de Bruin EC, McGranahan N, Swanton C. Deciphering intratumor heterogeneity and temporal acquisition of driver events to refine precision medicine. *Genome Biol*. 2014; 15: 453.
  67. Swanton C. Intratumor heterogeneity: evolution through space and time. *Cancer Res*. 2012; 72: 4875-4882.
  68. Gerlinger M, Rowan AJ, Horswell S, Larkin J, Endesfelder D, Gronroos E, Martinez P, Matthews N, Stewart A, Tarpey

- P, Varela I, Phillimore B, Begum S, et al. Intratumor heterogeneity and branched evolution revealed by multiregion sequencing. *N Engl J Med.* 2012; 366: 883-892.
69. Navin NE. Cancer genomics: one cell at a time. *Genome Biol.* 2014; 15: 452.
  70. Diaz LA Jr, Bardelli A. Liquid biopsies: genotyping circulating tumor DNA. *J Clin Oncol.* 2014; 32:579-586.
  71. Chin L, Andersen JN, Futreal PA. Cancer genomics: from discovery science to personalized medicine. *Nat Med.* 2011; 17: 297-303.
  72. Redig AJ and Jänne PA. Basket Trials and the Evolution of Clinical Trial Design in an Era of Genomic Medicine. *J Clin Oncol.* 2015; 33: 1-3.
  73. Lopez-Chavez A, Thomas A, Rajan A, Raffeld M, Morrow B, Kelly R, Carter CA, Guha U, Killian K, Lau CC, Abdullaev Z, Xi L, Pack S, et al. Molecular profiling and targeted therapy for advanced thoracic malignancies: a biomarker-derived, multiarm, multihistology phase II basket trial. *J Clin Oncol.* 2015; 33:1000-1007.
  74. Flaherty KT, Puzanov I, Kim KB, Ribas A, McArthur GA, Sosman JA, O'Dwyer PJ, Lee RJ, Grippo JF, Nolop K, Chapman PB. Inhibition of mutated, activated BRAF in metastatic melanoma. *N Engl J Med.* 2010; 363: 809-819.
  75. Prahallad A, Sun C, Huang S, Di Nicolantonio F, Salazar R, Zecchin D, Beijersbergen RL, Bardelli A, Bernards R. Unresponsiveness of colon cancer to BRAF(V600E) inhibition through feedback activation of EGFR. *Nature.* 2012; 483: 100-103.
  76. Loaiza-Bonilla A, Clayton E, Furth E, O'Hara M, Morrisette J. Dramatic response to dabrafenib and trametinib combination in a BRAF V600E-mutated cholangiocarcinoma: implementation of a molecular tumour board and next-generation sequencing for personalized medicine. *Ecancermedicalscience.* 2014; 8: 479.