



Università degli Studi di Ferrara

DOTTORATO DI RICERCA IN
"FARMACOLOGIA E ONCOLOGIA MOLECOLARE"

CICLO XXII

COORDINATORE Prof. Pier Andrea Borea

**Elucidating the role of the tumor suppressor Protein
Phoshatase 2A in Chronic Myeloid Leukemia**

Settore Scientifico Disciplinare BIO/17

Dottorando

Dott. Neviani Paolo

(firma)

Tutore

Prof. Volinia Stefano

(firma)

Anni 2006/2009

ABSTRACT (ENGLISH VERSION)	2
ABSTRACT (ITALIAN VERSION)	4
INTRODUCTION	6
PROTEIN PHOSPHATASE 2A	7
PP2A AND CANCER	11
CHRONIC MYELOID LEUKEMIA	16
AIM OF THIS STUDY	21
MATERIAL AND METHODS	22
CELL CULTURES AND PRIMARY CELLS	22
PLASMIDS	24
RT-PCR OF IMMUNOPRECIPITATED RNA (RIBONOMICS)	25
NESTED RT-PCR	25
WESTERN BLOT ANALYSIS	26
ANALYSIS OF APOPTOSIS AND CASPASE ACTIVATION	26
PHOSPHATASE ASSAYS	27
CLONOGENIC ASSAYS	27
LEUKEMOGENESIS IN SCID MICE	27
INTRACELLULAR FLOW CYTOMETRY	28
LONG-TERM CULTURE INITIATING-CELL ASSAYS	28
CFSE ASSAY	29
RESULTS	29
SET/hNRNP A1/PP2A INTERPLAY	29
RELEVANCE OF PP2A ACTIVITY SUPPRESSION IN CML	31
PRE-CLINICAL EVALUATION OF THE PP2A ACTIVATOR FTY720.	33
FTY720 RESTORES THE ACTIVITY OF PP2A AND INHIBITS THAT OF P210 AND P190 BCR/ABL	34
ANTILEUKEMIC ACTIVITY OF FTY720 IN PH1 LEUKEMIA CELLS IN VITRO	36
FTY720 SUPPRESSES IN VIVO BCR/ABL LEUKEMOGENESIS	39
FTY720 INDUCES APOPTOSIS OF THE CML LEUKEMIA INITIATING CELLS	41
DISCUSSION	44
REFERENCES	47
APPENDIX	62

FTY720, A NEW ALTERNATIVE FOR TREATING BLAST CRISIS CHRONIC MYELOGENOUS LEUKEMIA AND PHILADELPHIA CHROMOSOME-POSITIVE ACUTE LYMPHOCYTIC LEUKEMIA

ABSTRACT (English Version)

Protein phosphatase-2A (PP2A) is one of the major cellular serine-threonine phosphatases and is involved in the regulation of cell homeostasis through the negative regulation of signaling pathways initiated by protein kinases. As several cancers are characterized by the aberrant activity of oncogenic kinases, it was not surprising that a phosphatase like PP2A has progressively been considered as a potential tumor suppressor. Indeed, multiple solid tumors (e.g. melanomas, colorectal carcinomas, lung and breast cancers) present with genetic and/ or functional inactivation of different PP2A subunits and, therefore, loss of PP2A phosphatase activity towards certain substrates. Likewise, impaired PP2A phosphatase activity has been linked to B-cell chronic lymphocytic leukemia, Philadelphia-chromosome positive acute lymphoblastic leukemia and blast crisis chronic myeloid leukemia (CML). In CML the deregulated tyrosine kinase activity of p210-BCR/ABL oncoproteins is sufficient to induce and sustain the leukemic phenotype, and contributes to disease progression. Imatinib mesylate, a BCR/ABL kinase inhibitor, is effective in most of chronic phase CML patients. However, a significant percentage of CML patients develop resistance to imatinib and/or still progresses to blast crisis, a disease stage that is often refractory to imatinib therapy. Furthermore, there is compelling evidence indicating that the CML leukemia stem cell is also resistant to imatinib. We have recently reported that the phosphatase activity of PP2A is markedly inhibited in blast crisis and, to a lesser extent, chronic phase CML patient cells and that pharmacologic re-activation of PP2A phosphatase activity by activating drugs such as Forskolin and FTY720 led to growth suppression, enhanced apoptosis impaired clonogenic potential and decreased *in vivo* leukemogenesis of imatinib-sensitive and

-resistant CML-BC and CML-CP patient. Furthermore we have evidence that PP2A inactivation is an event that occurs also at the level of the leukemic stem cell and that PP2A re-activation hampers the survival and self-renewal of CML stem cells and possibly overcome the resistance of CML quiescent stem cells to tyrosine kinase inhibitor monotherapy. Thus, inducing PP2A phosphatase activity has the potential to eradicate CML by efficiently targeting both leukemic stem and progenitor cells regardless of their degree of sensitivity to kinase. Therefore, the combination of PP2A phosphatase-activating and BCR/ABL kinase-inhibiting drugs may represent a powerful therapeutic strategy for CML patients.

ABSTRACT (Italian Version)

La protein phosphatase-2A (PP2A), una delle principali serin-treonin fosfatasi, è coinvolta nella regolazione dell'omeostasi cellulare, attraverso il controllo negativo di pathways protein-chinasi dipendenti. Molti tumori sono caratterizzati dall'espressione di oncogeni ad attività chinasi costitutiva, pertanto non sorprende che una fosfatasi come PP2A sia sempre più spesso descritta come onco-soppressore. In effetti, molti tumori solidi (melanoma, carcinomi del colon, del polmone e della mammella) presentano alterazioni genetiche e/o funzionali di diverse subunità di PP2A, con conseguente perdita della sua attività fosfatasi verso substrati specifici. Inoltre, l'alterazione dell'attività di PP2A è stata collegata alla leucemia linfatica cronica di tipo B, alla leucemia linfoblastica acuta e alla leucemia mieloide cronica (LMC). Nella LMC l'attività costitutiva della tirosin-chinasi p210-BCR/ABL è sufficiente per indurre e sostenere il fenotipo leucemico e contribuisce alla progressione della neoplasia. L'Imatinib mesilato, un inibitore dell'attività chinasi di BCR/ABL, è efficace nella maggior parte dei pazienti nella fase cronica della LMC. Tuttavia, una percentuale significativa dei pazienti con LMC sviluppa resistenza a Imatinib e/o progredisce verso la crisi blastica, fase della malattia che spesso risulta refrattaria alla terapia; inoltre dati recenti sembrano mettere in evidenza lo sviluppo di resistenza all'Imatinib da parte della cellula staminale leucemica della LMC. Recentemente abbiamo dimostrato che l'attività di PP2A è inibita sia nella fase di crisi blastica, sia, seppur in minor misura, nella fase cronica; inoltre, l'utilizzo di farmaci come Forskolin e FTY720 porta alla riattivazione farmacologica di PP2A, provocando l'inibizione della proliferazione e del potenziale clonogenico, nonché l'induzione dell'apoptosi in cellule di pazienti in fase cronica e in crisi blastica suscettibili o resistenti all'Imatinib. Dati preliminari dimostrano che l'inattivazione di PP2A avviene anche

a livello della cellula staminale leucemica e che la sua riattivazione ne inibisce la sopravvivenza e il self-renewal; tale approccio, potrebbe rappresentare una strategia per superare la farmaco-resistenza a inibitori dell'attività chinasi di BCR/ABL. Quindi, l'induzione dell'attivazione di PP2A attraverso il targeting sia dei progenitori che delle cellule staminali leucemiche ha il potenziale di eradicare la LMC. La combinazione di farmaci attivatori di PP2A e di inibitori di BCR/ABL potrebbe rappresentare una nuova strategia terapeutica per i pazienti affetti da LMC.

INTRODUCTION

The ability to balance a complex network of signal transduction pathways is a key element in the normal homeostasis of a cell. Survival, proliferation and differentiation signals must be tightly controlled in order for a eukaryotic cell to keep its place in a multicellular organism and accurately react to external stimuli whether by proliferating, differentiating or eventually dying. Genetic or functional alterations of specific cell components may lead to inadequate responses to the microenvironment and therefore aberrant activation of pathways that control cell proliferation, survival and differentiation, ultimately leading to tumorigenesis and cancer (1). Mutations, amplifications or rearrangements may lead to the uncontrolled activity of proteins encoded by so-called proto-oncogenes (2), which are frequently cell cycle-promoting and/or apoptosis-repressing factors. This is often associated with the genetic or functional loss of tumor suppressor proteins, which usually have cell cycle-repressing and/or apoptosis-promoting effects (3). Gain of oncogene function associated with loss of tumor suppressors is now widely recognized as a hallmark of cancer initiation and progression (4).

One primary mechanism by which a normal cell maintains the balance of tumor-inducing and tumor-suppressing signals and appropriately responds to extracellular stimuli is reversible protein phosphorylation (5). Signals from the microenvironment (i.e. hormones and growth factors) are detected by cell surface receptors and translated into the activation of protein kinases which, in turn, act by phosphorylating substrates, thereby inducing an intracellular signal transduction cascade that directly affects the physiological response of the cell to external stimuli. The reversal of protein phosphorylation by protein phosphatases is essential in order to preserve correct cell physiology and tightly regulate these important signal transduction pathways. Given this scenario, it comes as no surprise that the majority of oncogenes identified thus far encode protein kinases,

and that aberrant regulation of their activity plays a major role in the induction of a cancerous phenotype (6).

Some of the best known examples of oncoproteins with unrestrained kinase activity are products of the t(9;22) translocation: the BCR/ABL oncoproteins, which are the driving force in the induction of both chronic myeloid leukemia (CML) and Philadelphia-positive acute lymphoblastic leukemia (Ph-ALL) (7, 8). Conversely, it seems logical to assume that protein phosphatases may also play a key role in cancer progression by acting as important regulators of the activation status of proteins involved in signal transduction. Undeniably, the study of protein phosphatases and their regulation has become an expanding field of research aimed at shedding light on the importance of these proteins in cancer (9). In particular, protein phosphatase 2A (PP2A) has been the subject of recent investigations that have begun to unravel the central role of this enzyme in cancer. By negatively regulating many of the signals triggered by oncogenic kinases, PP2A can be truly described as a tumor suppressor (10, 11).

Protein phosphatase 2A

PP2A is one of the major serine-threonine phosphatases. Highly conserved and ubiquitously expressed, PP2A is directly involved in a multitude of cellular processes by dephosphorylating specific substrates, therefore providing a negative feedback to signals initiated by protein kinases. PP2A phosphatase activity has been linked to the regulation of the cell cycle, signal transduction, DNA replication, transcription and translation (12, 13); for that reason, a peculiarity of PP2A is that a single phosphatase is responsible for regulating a variety of processes triggered by an array of different protein kinases. The ability of PP2A to affect the phosphorylation status of a wide variety of substrates is a consequence of its complex structure and regulation (Figure 1). PP2A is a heterodimeric or

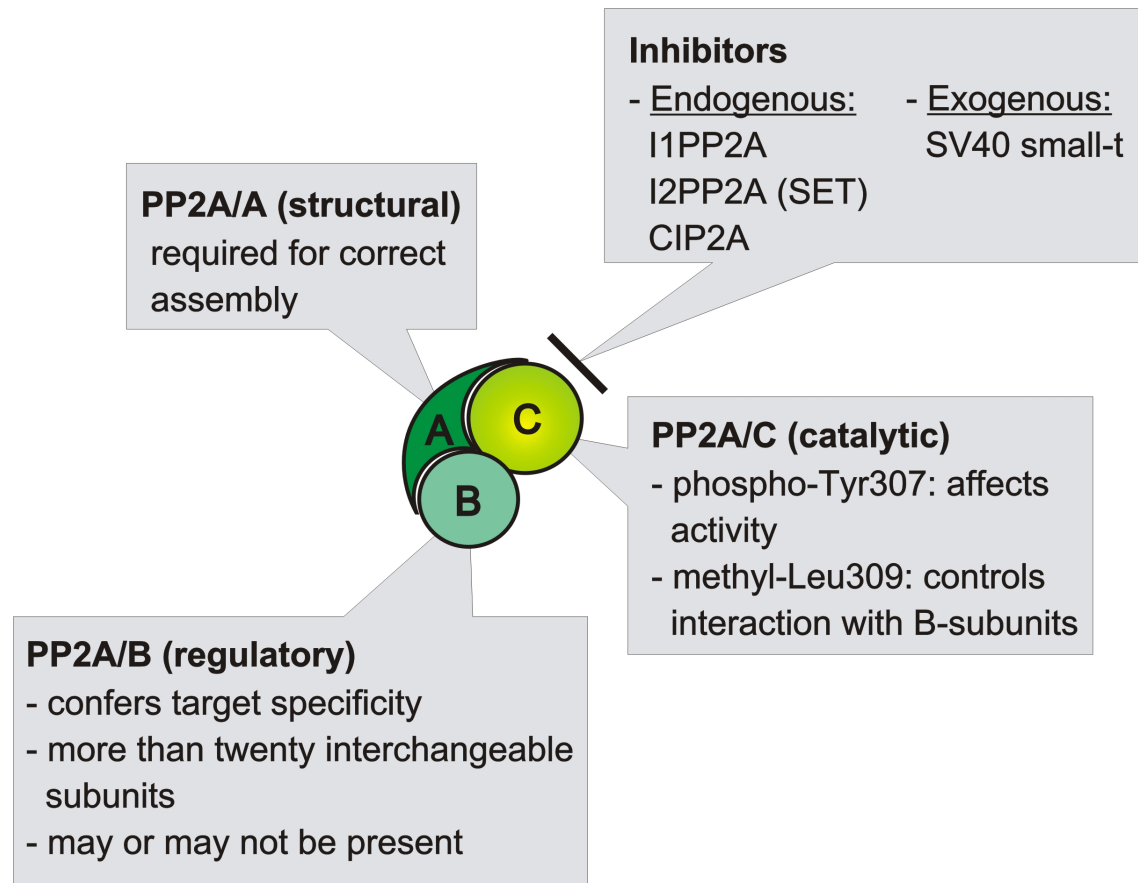


Figure 1: Schematic representation of the quaternary structure of the PP2A holoenzyme. The figure shows the different levels at which the enzyme can be modulated either by changing the dimeric/trimeric composition, post-translational modifications and/or regulation by inhibitory molecules

heterotrimeric complex which contains a constant core dimeric structure, a 36 kDa catalytic subunit (PP2Ac, α and β isoforms) and a 65 kDa structural subunit (PP2A/A or PR65, α and β isoforms); this dimeric structure (PP2A/AC) may or may not be associated with a variable third subunit, a family of regulatory B subunits that provide substrate/tissue specificity and which are also differentially expressed during development (13, 14) (Figure 1). The B subunits are classified into four different families of unrelated proteins: PR55/B (four isoforms), PR61/B' (encoded by five genes with up to eleven isoforms), PR72/B'' (four isoforms) and PR93/110/B''' (two unrelated proteins) (14). The ability of PP2A to function as a dimer and also associate with an array of more than twenty interchangeable B subunits partially explains the variety of functions carried by this enzyme and underlines the potential complexity of PP2A phosphatase activity and its regulation. Thus, it seems logical that specific heterotrimeric configurations are

responsible for different PP2A functions. As an example, it has been found that PR55/B may regulate cytokinesis in yeast (15), correct segregation of chromatids in *Drosophila* (16) and neuronal differentiation in humans (17); the B' subunit family appears to be important for regulating the formation of cyclin-G/PP2A complexes, which regulate the phosphorylation status of mdm2, indirectly affecting the stability of p53 (18); PR59/B'' targets PP2A to dephosphorylate the retinoblastoma-related p107 protein, suggesting a role in the regulation of the cell cycle (19). Such a variety of forms and activities places PP2A at the center of the regulation of most signal transduction pathways triggered and sustained by protein kinases. As an example, PP2A can dephosphorylate and inactivate MEK1 and ERK-family kinases, therefore inhibiting mitogenic signals (20). Moreover the small-t antigen, a viral protein that is involved in cellular transformation, is believed to cooperate with the large-T antigen of the SV40 virus in inducing transformation and immortalization of target cells in part by hyper-activating the MAPK pathway as a consequence of the displacement of the variable B subunit which results in PP2A inactivation (21). Furthermore, a direct involvement of PP2A in the regulation of the cell cycle has been reported at many different levels. Specifically, the PR55/B α :PP2A complex dephosphorylates and inhibits CAK (Cdk-activating kinase) that, when active, phosphorylates and activates Cdc2 in the MPF complex (M-phase-promoting factor) therefore inducing the G2/M transition (22). In this instance PP2A is able to exert a negative effect on regulating entry into mitosis. On the other hand, PP2A has a positive regulatory function in apoptosis (23); this is mediated by dephosphorylation and inactivation of the anti-apoptotic Bcl-2 protein which occurs following the targeting of PP2A to the mitochondria and direct interaction with Bcl-2 via the PR61 α /B' subunit, and also by PP2A-mediated dephosphorylation and activation of the pro- apoptotic factor Bad. Another PP2A substrate involved in pro-survival signals is Rel A, an NF- κ B transcription factor,

which has been found physically associated with the PR65/A subunit and whose transactivating activity is diminished upon direct dephosphorylation by PP2A (24). It has also been demonstrated that PP2A can negatively regulate the PI3K/Akt pathway by associating to and directly dephosphorylating Akt (25). Furthermore PP2A has a role downstream of Akt, specifically inhibiting the mTOR pathway; in fact PP2A directly inactivates S6 kinase, which is responsible for promoting cell growth by enhancing the translation of 5'TOP (containing a short polypyrimidine stretch at the 5' terminus) mRNAs (26-28). PP2A also has an essential role in the regulation of Wnt signaling, a pathway linked to embryonic development, cell growth and stem cell self-renewal. In fact, a PP2A complex containing the B56 γ subunit has been shown to be part of the β -catenin degradation complex, together with GSK3 β and Axin where the PP2A catalytic subunit is involved in the process of inactivation and degradation of β -catenin, therefore shutting down the Wnt pathway (29). It becomes obvious that with such a diversity of functions, PP2A phosphatase activity needs to be tightly regulated. The primary level of regulation, as mentioned above, is the hetero-oligomeric composition of the PP2A complexes; however, PP2A can also undergo post-translational modifications and can be controlled by its association with inhibitory proteins. Until recently, the regulation of the quaternary structure of PP2A was poorly understood. However, the recent elucidation of the crystal structure of PP2A (30) led to the definition of a major role for the highly conserved C-terminal sequence of the C subunit (12, 31). It was already known that a C-terminal tyrosine residue (Tyr307) on the PP2A catalytic subunit could be phosphorylated, and that this event induces inactivation of the enzyme itself. In addition, PP2Ac can also be inactivated by phosphorylation on other, as yet unspecified, threonine residues, and in both cases PP2A can reactivate itself by auto-dephosphorylation (12, 31). The C-terminus of PP2Ac is also reversibly carboxymethylated on Leu309 by a specific carboxyl

methyltransferase (LCMT1). This post-translational event appears to not directly affect PP2A phosphatase activity, but it is thought to affect holoenzyme composition. This idea has been re-investigated recently, and it appears that each B subunit family requires different levels of carboxymethylation on the C subunit to allow for assembly into the trimeric complex (31). Some subunits, such as PR55/B, require PP2Ac to be methylated, and others, such as PR61/B' and PR72/B'', associate only when the catalytic subunit is not methylated (31). These latest findings give new insights into the complexity of regulation of PP2A activity.

Another level of complexity in the regulation of PP2A is the occurrence of several endogenous PP2A inhibitors, called I1PP2A, I2PP2A and CIP2A (32, 33). The biological significance of I1PP2A is still for the most part unknown. However, recent work has suggested a role for this protein in mediating the abnormal phosphorylation of the tau protein seen in Alzheimer's disease (34). The Cancerous Inhibitor of PP2A (CIP2A) enhances the stability of the c-Myc through a mechanism that inhibits PP2A activity toward Serine 62 of this proto-oncogene. At last, I2PP2A, better known as SET, is the most characterized endogenous inhibitor of PP2A. SET is phosphorylated on two serine residues, most likely by PKC, and exerts its potent PP2A inhibitory activity via its N-terminal sequence (12, 35). Most importantly, SET has been found fused to the nucleoporin 214 (NUP214, CAN) protein in a form of acute non-lymphocytic myeloid leukemia with t(6,9) (36), associated with the oncoprotein MLL (mixed lineage leukemia, also called ALL1, HRX) in acute myeloid leukemia (37).

PP2A and cancer

The ability of PP2A to negatively and positively regulate mitogenic and apoptotic signals, respectively, has raised the hypothesis that PP2A might be involved in cancer development and progression. However, given the complexity of

PP2A regulation and its involvement in a wide variety of cellular mechanisms, it has been difficult to unequivocally and formally define PP2A as a bona fide tumor suppressor. The first lines of evidence implicating PP2A in cell transformation came in the late 1980s and early 1990s and were based on two observations. Firstly, that okadaic acid, a naturally occurring toxin and potent tumor promoter, is an inhibitor of PP2A (38). Secondly, that the SV40 small-t antigen interacts with PP2A/A and inhibits PP2A phosphatase activity by displacing several B subunits and that such inhibition is required for its function in cell transformation (39). However, it is only recently that inhibition of PP2A has become more widely accepted as being an essential step which allows cells to undergo complete transformation in response to activated oncogenes (11, 33, 40). Different PP2A subunits have now been found either mutated or aberrantly expressed in a number of malignancies that show loss of PP2A activity in conjunction with increased stability/activation of protein kinases and/or of their downstream targets (i.e. MAPK and Akt).

The B subunit B56 γ (of the PR61/B' family) has been found overexpressed in metastatic melanoma cells compared to normal melanocytes (41); in these cells, PP2A failed to dephosphorylate the protein paxillin in focal adhesions, therefore enhancing the invasiveness of metastatic clones (42). Conversely, overexpression of B56 γ partially reversed the tumorigenic activity of SV40-transformed cells and lung cancer cells (43). Accordingly, a truncated isoform of B56 γ leading contributes to an enhanced metastatic potential of melanoma cells (44). This is in line with the notion that the major signaling pathways whose alterations are classically considered to trigger malignant transformation are regulated by the PP2A B56 γ subunit. In fact, B56 γ has been described as the regulatory subunit that targets PP2A to the Wnt/ β -catenin and the MAPK signaling pathways and that elicits caspase-dependent apoptosis (29, 45, 46).

Although it seems that the PP2A:B56 form of the holoenzyme might represent a major player in cell transformation, the scaffolding PR65/A subunit has now been described as a tumor suppressor per se. Somatic mutations of both the α and β isoforms of PR65/A have been reported with high frequency in cancer. Interestingly, the A β isoform (PPP2R1B) gene has been found mutated in 15% of primary lung tumors, in 15% of colorectal carcinomas and in 13% of breast cancers (47-51). Moreover A β maps to chromosome 11q23, a region frequently deleted in various cancers and leukemias (52), and its loss-of-function cooperates with the expression of the large-T antigen, hTERT and H-RAS to transform human cells (40). Importantly, reintroduction of a wild-type A β partially reverses the tumorigenic phenotype of lung cancer cell lines (40). In this regard, a recent study (40) provided new insight into the role of PP2A/A β in cell transformation: PP2A/A β interacts with and modulates the activity of the small GTPase RalA, a known regulator of membrane transport, apoptosis, transcription, cell migration and cell proliferation (53). Sablina et al. (40) found RalA hyper-phosphorylated in cells lacking PP2A/A β expression and that regulation of RalA phosphorylation seems to be essential for the transformation associated with loss of PP2A/A β in cancer. In addition, the role of PP2A/A β as a tumor suppressor may likely be functionally explained by the disruption of the quaternary structure of PP2A complexes as consequence of the defective binding to B and/or C subunits and, therefore, resulting in impaired PP2A phosphatase activity towards specific substrates (48, 54). Supporting the importance of PP2A A subunit in tumor formation and, perhaps in metastatic progression, there is also evidence that mutation of the PP2A/A α subunit impaired phosphatase activity, led to activation of the Akt-dependent survival signals and permitted cells to form tumors in mice, suggesting that cancer-associated mutations of PP2A/A α contribute to cancer development by altering PP2A holoenzyme composition and function (55).

Inhibition of PP2A activity and, therefore, loss of its tumor suppressing potential, occurs at different levels, either within the structure of the multimeric enzyme itself (e.g. loss of expression/activity of one or more subunits), or through the activity of external effectors, whether endogenous (e.g. SET) or exogenous (e.g. okadaic acid, small-t antigen). For example, loss of Pml (promyelocytic leukemia gene) leads to tumorigenesis in the prostate through a mechanism that requires the recruitment of PP2A and phospho-Akt by Pml into the Pml nuclear bodies (56). Interestingly, Pml-null cells show suppression of PP2A phosphatase activity towards Akt that accumulates as nuclear phospho-Akt. As a consequence, the progressive reduction in Pml levels leads to inactivation of Foxo3a-mediated transcription of the proapoptotic protein Bim and the cell cycle inhibitor p27 (kip1) thus favoring cancer development (56). Likewise, a recently published report (33) identified a new endogenous inhibitor of PP2A, CIP2A (cancerous inhibitor of PP2A). This 90 kDa protein had already been found overexpressed in gastric cancers, but its function has remained elusive until recently (57). Junttila et al. (33) reported that siRNA-mediated downregulation of CIP2A in HeLa cells affected the expression of a variety known targets of c-Myc. Notably, the proto-oncogene c-Myc is a target of PP2A phosphatase activity (58-60), and the phosphorylation on Ser62 stabilizes this transcription factor and prevents its degradation (61). CIP2A strongly inhibits the phosphatase activity of PP2Ac, selectively targeting c-Myc-associated PP2A complexes to prevent Ser62 dephosphorylation and consequently allow sustained and unrestrained c-Myc activity (33). These data suggest that CIP2A inhibition may be a possible strategy to induce targeted degradation of c-Myc in cancer cells.

Recent studies, including from our group, have reported that the loss of PP2A phosphatase activity and, therefore its tumor suppressor ability, may play a central role in the development of different leukemias, such as Philadelphia-

chromosome positive leukemias like CML and Ph(+) B-ALL, and also B-cell chronic lymphocytic leukemia (B-CLL) (62-64). B-CLL is the most common leukemia in adults, and deletion of the chromosome region 11q22–q23 is the second most common genomic alteration in B-CLL, representing a cohort of patients characterized by an adverse prognosis (65); interestingly, this region harbors the PP2A/A β locus. In their 2007 study, Kalla et al. (64) screened the remaining copy of the PP2A/A β gene for mutations in a number of patients carrying monoallelic deletion of this chromosome region. No deleterious mutations were found, confirming a previous report (66). However, the basal transcription of the PP2A/A β gene was found to be significantly lower in patients independent of the 11q deletion. Moreover, they found three splicing variants of this PP2A subunit, characterized by skipping of exon 9, exon 3 or exons 2 and 3, and all were expected to interfere with the correct assembly of functional trimeric holoenzymes with consequent loss of domains necessary for interaction with C and B subunits (64). In agreement with the idea that disruption of the quaternary structure of PP2A most likely affects phosphatase activity, a significant reduction of PP2A activity was found in almost all of these B-CLL patients assayed, regardless of differences in the expression of the various PP2A/A β isoforms (64). As expected, an even greater reduction in PP2A phosphatase activity was observed in those patients expressing these splice variants. The potential role that PP2A may play in B-CLL was also investigated in a recent report by Liu et al. (67), in which the possibility of inducing PP2A activation as a possible therapeutic strategy for CLL was investigated in detail. The PP2A activator tested, FTY720 (Fingolimod; Novartis), is a known immunomodulator that is currently being evaluated in phase III clinical trials for multiple sclerosis (68, 69). FTY720 is a synthetic water-soluble myriocin analog that is structurally similar to sphingosine. It is a relatively non-toxic drug with high oral bioavailability and it reversibly arrests lymphocyte trafficking (70, 71).

FTY720 treatment of transformed B-cells induces apoptosis by a Bcl-2 independent mechanism, and it also reduces phospho-ERK1/2 levels (67). More importantly, FTY720 treatment prolonged animal survival in a xenograft SCID mouse model of B cell lymphoma/leukemia (67).

Chronic Myeloid Leukemia

Chronic Myeloid Leukemia is a clonal disorder of the pluripotent haematopoietic stem cells and is clinically characterized by two distinct stages, a protracted myeloproliferative disorder termed chronic phase (CML-CP) that progresses to a rapidly fatal blast crisis (CML-BC) (7). CML-CP, largely asymptomatic, is distinguished by the expansion and accumulation of terminally differentiated neutrophil granulocytes in the peripheral blood. If left untreated CML-CP inevitably progresses to the blast phase, characterized by accumulation of blast cells in the peripheral blood that are unable to differentiate; CML-BC is the terminal phase of this malignancy and behaves as an acute leukemia (7). CML has been the first cancer to be linked to a specific somatic genetic abnormality (7). In fact the main feature of CML is the presence of the Philadelphia chromosome (Ph1), product of the reciprocal translocation between chromosome 9 and chromosome 22, t(9;22)(q34;q11). The translocation results in the fusion of the BCR (9q22) to the c-ABL (22q11) gene. In CML, the BCR/ABL fusion gene encodes for a 210kDa protein called p210-BCR/ABL. Depending on the location of the breaking point on the BCR locus the product of the t(9;22) can also be a p190- or a p230-BCR/ABL, which are normally detected in Philadelphia-positive B-acute lymphoblastic leukemia (Ph1 ALL) and chronic neutrophilic leukemia (CNL) respectively (72).

It has been well established that the sole expression of p210-BCR/ABL is necessary and sufficient for the induction of chronic phase CML (7). In blast crisis

CML other frequent genetic and molecular abnormalities arise (e.g. double Ph1 chromosome, p53 inactivation) (73), but increased expression and activity of the BCR/ABL oncoprotein still appear to be playing a central role in the progression of the disease (74-76), in fact, sustained BCR/ABL expression in myeloid progenitor cell lines induces phenotypic changes (i.e. differentiation arrest) characteristic of CML-BC (77). Moreover high levels of BCR/ABL activity as seen in CML-BC trigger oxidative stress in the cells, which is likely responsible for the induction of DNA damage and secondary genetic abnormalities. The ability of BCR/ABL to induce and sustain the leukemic phenotype depends on its unrestrained tyrosine kinase activity (7). BCR/ABL constitutive kinase activity is essential for the recruitment and activation of multiple pathways that transduce oncogenic signals leading to growth factor-independent proliferation, increased survival and altered differentiation (78) of myeloid precursors. In fact, the effect of BCR/ABL transformation is mostly dependent on post-translational modifications (e.g. phosphorylation) of signaling molecules, like those involved in the RAS/MAPK, PI3K/Akt and STATs pathways, which control cell growth, survival and differentiation of haematopoietic cells by modulating the expression and/or activity of downstream effectors (79, 80) (Figure 2). In blast crisis, increased expression of the BCR/ABL oncoprotein accounts for the block of differentiation, inactivation of factors with tumour suppressor activity and decreased genomic stability of the Ph1 blasts (7, 78, 81, 82). Thus, dependence on BCR/ABL expression is not only a characteristic of CML-CP but also of CML-BC; however, BCR/ABL-independent mechanisms also seem to contribute to disease progression and treatment resistance in some CML cases (83, 84).

Since the deregulated BCR/ABL kinase activity is the recognized culprit of cause of CML, targeting its catalytic domain was the most rationale method for the development of small molecules that inhibit ABL kinase activity. Through a

combination of high-throughput screening and a structure-based drug design approach the Signal Transduction Inhibitor 571 (STI571) was developed in the late 90s. Now commercialized as Imatinib Mesylate (Gleevec, Novartis Basel, Switzerland), it is a c-Kit, c-Abl and PDGFR inhibitor, and induces apoptosis of the Ph1 CML progenitors by suppressing the ability of BCR/ABL to phosphorylate substrates through competitive inhibition at the BCR/ABL ATP binding site (85). The development of the BCR/ABL tyrosine kinase inhibitor Imatinib Mesylate as the treatment of choice for chronic phase CML has changed the natural history of the disease with up to 90% of the patients achieving a complete cytogenetic response in chronic phase. Its remarkable therapeutic effects suggest that blast crisis transition will be postponed for several years in the majority of CML patients (86, 87). However, the persistence of BCR/ABL transcripts in a cohort of patients with complete cytogenetic response (88) and the resistance of the primitive CML stem cell to Imatinib treatment (89) raises the possibility that treatment with Imatinib alone might delay but not prevent disease progression. Furthermore, most of the CML patients that start the treatment in the accelerated and blastic phases of the disease are either refractory or develop resistance to Imatinib monotherapy (86). In these CML-BC patients, Imatinib resistance often depends on reactivation of BCR/ABL tyrosine kinase activity via mechanisms involving BCR/ABL overexpression, gene amplification or mutations that suppress Imatinib-mediated kinase inhibition (i.e. E255V and G250E) or disrupt Imatinib binding (i.e. T315I) (90). Thus, development of Imatinib resistance appears to predispose to blastic transformation. Hence, second generation tyrosine kinase inhibitors have been developed in the past few years. Although new clinical trials with the dual Src/Abl inhibitor Dasatinib (BMS-354825) and the selective Abl inhibitor Nilotinib (AMN1070) show encouraging results (91), as they suppress the activity of most BCR/ABL mutants (except T315I) (91), in vitro evidence suggests that resistance

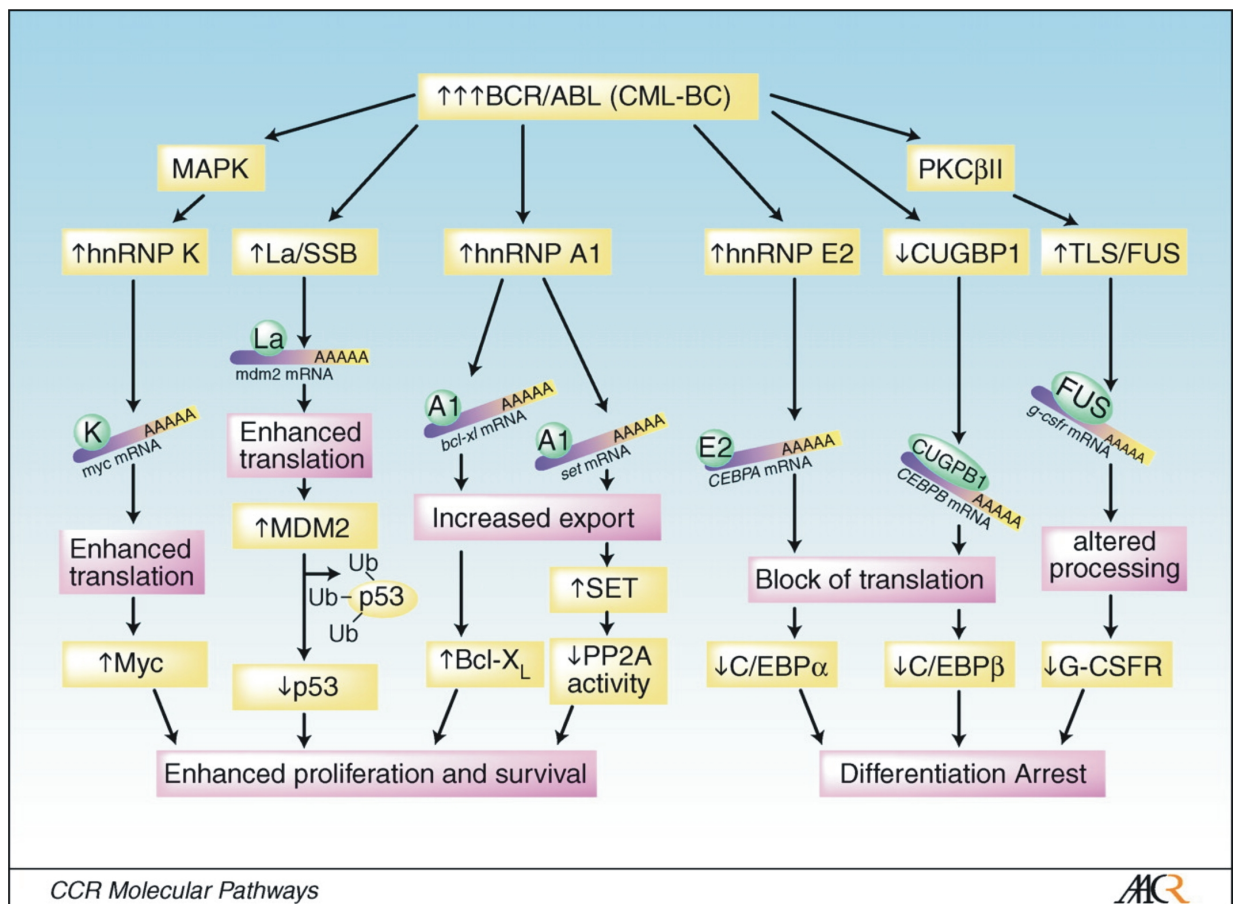
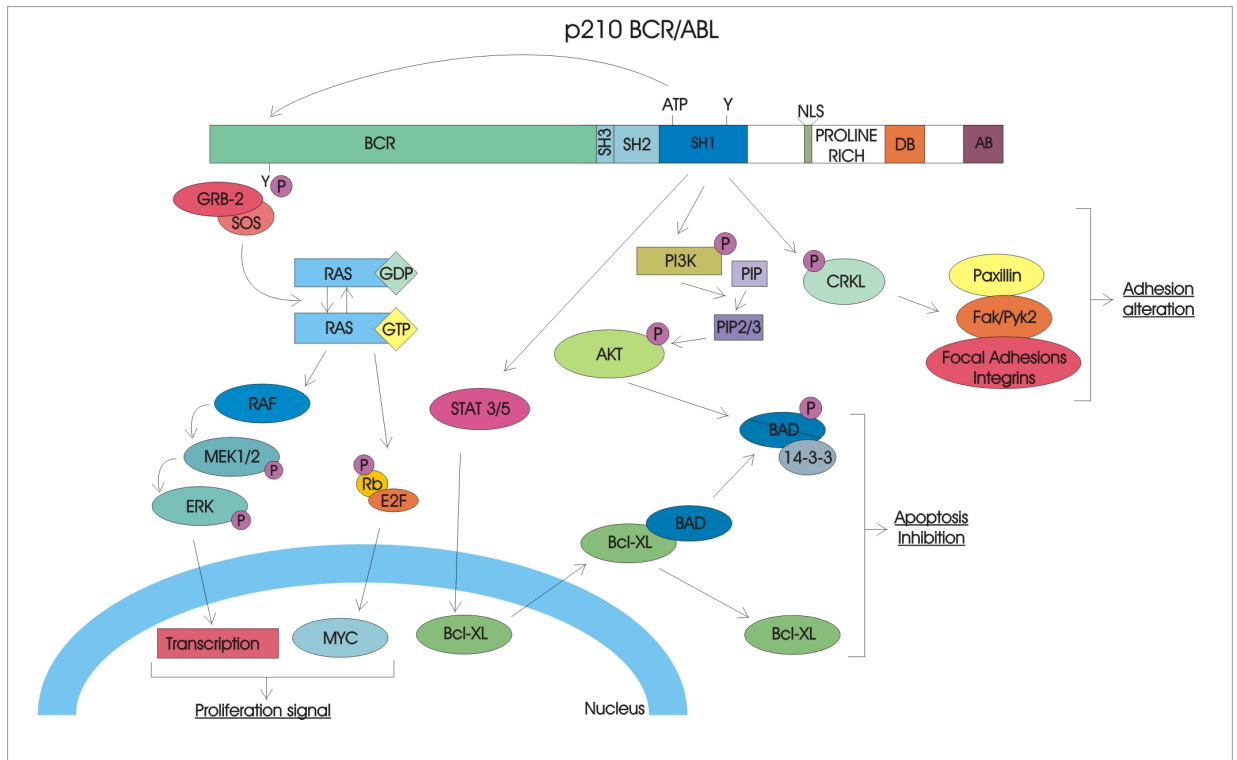


Figure 2. Top: Schematic representation of some of the pathways activated by p210BCR/ABL and involved in the BCR/ABL-dependent induction of the transformed phenotype in CML. **Bottom:** Schematic representation of the BCR/ABL-induced and RNA binding protein-mediated pathways affecting proliferation survival and differentiation of CML-BC progenitors.

to these new compounds may develop through mechanisms involving the selection and expansion of BCR/ABL cell clones carrying the T315I BCR/ABL mutant (92). Additionally, Dasatinib and Nilotinib, like Imatinib, are not effective in the treatment of CML-BC patients (93).

The mechanisms responsible for transition of CML chronic phase into blast crisis remain poorly understood, although a reasonable assumption is that the unrestrained activity of BCR/ ABL in hematopoietic stem/progenitor cells is the primary determinant of disease progression. However, a plausible model of disease progression predicts that increased BCR/ABL expression promotes the secondary molecular and chromosomal changes essential for the expansion of cell clones with increasingly malignant characteristics, and remains crucial for the transformed phenotype even in advanced stages of the disease (7). According to this model, CML blast crisis would be expected to occur only in patients with an imatinib-resistant disease or in those developing resistance during treatment. Indeed, a recent study from the GIMEMA Working Party on CML reported that the early detection of BCR/ABL mutations in CML chronic phase patients is associated with a greater likelihood of disease progression (94). Interestingly, a direct correlation also seems to exist between levels of BCR/ABL activity and development of imatinib resistance (95, 96).

Another level of complexity in the treatment of CML is the fact that there is increasing evidence that the most primitive and quiescent CML stem cells, designated as leukemic stem cells or cancer initiating cells, appear to be intrinsically insensitive to the tyrosine kinase inhibitors(89, 97). Therefore, therapy with Imatinib may never be curative and indefinite treatment may be required for a sustained response; this may pose the risk of developing resistance or intolerance leaving the opportunity open for a possible relapse of CML given the persistence of a pool of leukemic stem cells. Interestingly the resistance of the quiescent stem

cells to BCR/ABL inhibition is raising the possibility that, paradoxically, the survival of LSCs may be to some degree, if not completely, independent of BCR/ABL.

Aim of This Study

The natural history of CML has been radically changed by the introduction of Imatinib and second-generation tyrosine kinase inhibitors (Dasatinib and Nilotinib), but relapse and progression into the blast phase of the disease, as a consequence of arising of BCR/ABL mutations and/or intolerance to the treatment, is a possibility that still exists and cannot be ignored. Moreover patients that may be diagnosed during the blast crisis do not have any feasible therapeutic option and to this day the only curative regimen for CML is bone marrow transplantation. Therefore, there is still a need for new drugs that, if used in combination with the available kinase inhibitors, may help decrease the rate of relapse, prevent blastic transformation and, perhaps, overcome Imatinib resistance. Therefore, a better understanding of the biology of CML-BC is necessary to identify molecular networks that, if appropriately modulated, will simultaneously affect the function of BCR/ABL and that of multiple signals aberrantly activated in CML-BC. Moreover, in light of the recent findings concerning the insensitivity of the leukemic stem cells to the tyrosine kinase inhibitors (97), many groups, including ours, are now poised to dissect the biology of the leukemic stem cells and to find alternative factors in charge of the survival and self-renewal of the cancer initiating cells, and that could be targeted in the hope of eradicating CML at a stem cell level, which could eventually result into a long-term cure. Therefore the main objective of these studies is to dissect the mechanisms responsible for disease progression in CML.

In BCR/ABL-expressing myeloid progenitor cell lines, high levels of BCR/ABL, as those observed in CML-BC, suppress differentiation, enhance survival and increase resistance to drug-induced apoptosis in part by enhancing

the expression and activity of specific RNA binding proteins (78, 82, 98, 99) (Figure 2). Such an increase in the expression of these mRNA-binding proteins correlates with the levels of BCR/ABL and is sensitive to the treatment with Imatinib (77, 82, 98, 100). In BCR/ABL-expressing hematopoietic cells, expression of these RNA-binding proteins results from enhanced gene transcription (eg hnRNP A2/B1, hnRNP K, JKTBP1, hnRNP D1, Tra2b, RNPS1, EWSH, SC-35, Pabp2 and hnRNP H1), or increased protein stability (ie TLS/FUS, hnRNP A1, hnRNP E2 and La/SSB) (77, 78, 82, 99-101). In this study, we focused on the nucleocytoplasmic shuttling protein hnRNP A1, a previously described protein required for BCR/ABL leukemogenesis (100), and we identified SET (I2PP2A), a phosphoprotein already described as being overexpressed in solid tumors and leukemias (102, 103), as a novel target of BCR/ABL whose mRNA transport, from the nucleus to the translation machinery in the cytoplasm, is dependent on hnRNP A1(62). SET is a potent inhibitor of the tumor suppressor PP2A (35). This preliminary finding raised the possibility that PP2A could be involved in the leukemogenesis of CML, and that its inhibition, through SET, may be a mechanism that is put in place by BCR/ABL to suppress PP2A tumor suppressive ability and to allow for the progression of the disease.

MATERIAL AND METHODS

Cell cultures and primary cells

The Ph1 K562, the BCR/ABL-expressing 32Dcl3 and BaF3 cells, and their derivative lines were maintained in culture in IMDM/10% FBS/2 mM L-glutamine. The 32D-p210BCR/ABL, 32D-p210BCR/ABL (T315I), BaF3-p190BCR/ABL, 32D-BCR/ABL-pBABE-GFP, and 32D-BCR/ABL-GFP–small-t cells were generated by

retroviral infection followed by FACS-mediated sorting of the GFP-positive fraction (green fluorescent protein) or by antibiotic-mediated selection (78). Frozen samples of CD34⁺ NBM cells from different healthy donors were purchased from Cincinnati Children's Hospital. Frozen samples of mononuclear hematopoietic cells from bone marrow or peripheral blood of unidentifiable CML and Ph1 ALL patients were Ficoll separated and used to isolate the CD34⁺ and/or CD19⁺ fraction by using the CD34 MultiSort kit and/or CD19 microbeads (Miltenyi Biotec). The same method was used to isolate the CD19⁺ fraction from the normal CD34⁺ marrow progenitors. Before being used in different assays, CD34⁺ and CD34⁺/CD19⁺ progenitors from healthy donors and leukemic patients were kept overnight in IMDM supplemented with 30% FBS, 2 mM glutamine, and human recombinant cytokines. Specifically, NBM^{CD34⁺}, CML-CP^{CD34⁺} and CML-BC^{CD34⁺} cells were kept in IL-3 (20 ng/ml), IL-6 (20 ng/ml), Flt-3 ligand (100 ng/ml), and KL (100 ng/ml) (Stem Cell Technologies Inc.), whereas NBM^{CD34⁺/CD19⁺} and Ph1 ALL^{CD34⁺/CD19⁺} cells were cultured in IL-7 (100 ng/ml) (Peprotech Inc.), SCF, and Flt-3 ligand, respectively. All studies were performed with human specimens obtained from The Ohio State University Leukemia Tissue Bank; the Division of Hematology, Maisonneuve-Rosemont Hospital (Montreal, Canada), Division of Experimental Oncology, National Cancer Institute (Milan, Italy), and from the Department Hematology and Oncology, Oregon Health and Science University and were done with approval from The Ohio State University Institutional Review Board. Ph1 ALL patient samples were obtained from the Cancer and Leukemia Group B Leukemia Tissue Bank at The Ohio State University. The percentage of CML-CP Ph⁺ cells analyzed by FISH ranged from 91% to 100%. The CML-BC samples were all myeloid BC and mostly with complex karyotype, and no CML-BC samples had deletions of the der9q. Likewise, the Ph1 ALL bone marrow samples at diagnosis showed high blast counts and were mostly p190 BCR/ABL⁺ (2 of 12 expressed a

p210 BCR/ABL oncoprotein). Where indicated, cells were treated with the following: ALLN, okadaic acid, , sodium stibogluconate, and butyryl-forskolin (EMD Bioscience Inc.); forskolin, 1,9-dideoxy-forskolin (BioMol); Imatinib (Novartis); Dasatinib (Bristol-Myers Squibb). FTY720 was synthesized with subsequent HPLC purification as described in (104). The identity and purity were confirmed by nuclear magnetic resonance and mass spectrometry.

Plasmids

pHM6-HA-PP2Ac contains the HA-tagged PP2A catalytic subunit under the control of the CMV promoter (P.B. Rothman, Columbia University, New York, NY).

MigRI-HA-PP2Ac. The HA-tagged PP2Ac cDNA was PCR amplified from pHM6-HA-PP2Ac and subcloned into the HpaI/EcoRI sites of the bicistronic GFP-containing MigRI vector.

pSuper.retro-shSET. The shRNA SET construct was obtained by subcloning the double-stranded 60 mer oligonucleotide containing the SET target sequence (5'-TGAAATAGACAGACTTAAT-3') into the pSuper.retro.neo+GFP vector (OligoEngine).

MSCV-FLAG-SET. The human *SET* cDNA was obtained from K562 mRNA by RT-PCR using an upstream primer containing a HpaI site, the FLAG epitope, and the first 16 nucleotides of *SET* cDNA, and a downstream primer containing the last 21 nucleotides of SET linked to an EcoRI restriction site. The HpaI/EcoRI-digested PCR product was subcloned into the MSCV-puro vector.

pBABE-GFP-sTAg. The retroviral vector pBABE-GFP and its derivative pBABE-GFP-sTAg carrying the SV40 small-t (Addgene plasmid 10673; provided by William C. Hahn, Dana-Farber Cancer Institute, Boston, Massachusetts, USA) have been described elsewhere (75).

RT-PCR of immunoprecipitated RNA (Ribonomics)

K562 cells (10^8) were lysed in 2 pellet/vol of 10 mM HEPES (pH 7.0), 100 mM KCl, 1 mM MgCl₂, 1 mM DTT, 0.5% Nonidet P-40, 100 U/ml RNase OUT (Invitrogen), 0.2 mM PMSF, 1 mg/ml pepstatin A, 5 mg/ml bestatin, and 20 mg/ml leupeptin, and clarified ($100,000 \times g$, 2.5 hr). RNP-containing particles were purified by centrifugation ($300,000 \times g$; 3 hr) and resuspended in 1 ml of 50 mM Tris (pH 7.4), 150 mM NaCl, 1 mM MgCl₂, 0.05% NP-40, 100 U/ml RNase OUT, 0.2 mM PMSF, and 20 mM EDTA. Immunoprecipitation (IP) and extraction of the hnRNP A1 bound mRNA was performed as described (105). The presence of *SET* transcripts was assessed by RT-PCR performed on an equal amount of RNA, extracted from RNP-enriched lysates (input) as well as from the hnRNP-A1 or FLAG immunoprecipitates. To amplify SET mRNA, the following primers were used:

5'-GAGGTCAGAATTGATCGCCAAAATC-3'

5'-TCAGATGAAATTCTTTGGAGAGAAC-3'

Nested RT-PCR

To detect *BCR/ABL* transcripts, RNA was extracted (QIAamp RNA blood kit; Qiagen) from mouse peripheral blood. RNA from K562:32Dcl3 cells (ratio 1:10⁶) served as positive control, whereas RNA from blood of mice that were not injected with BCR/ABL+ cells was used as negative control. Total RNA was reverse transcribed and cDNA was used to detect BCR/ABL transcripts by nested PCR using a first set of primers spanning the *bcr* exon 1/*abl* exon 3 and a second set amplifying a *bcr* exon 2/*abl* exon 3 fragment. The nested RT-PCR conditions were previously described (106). GAPDH levels were monitored as control for equal amplification.

Western blot analysis

Cells were lysed in RIPA buffer (150 mM NaCl, 1% NP-40, 0.1% SDS, 50 mM Tris [pH 8.0]) supplemented with protease and phosphatase inhibitors. After incubation on ice, lysates were clarified (12,000 × g, 15 min, 4°C), denatured, and subjected to SDS-PAGE and Western blot (100). The antibodies used were goat polyclonal anti-SET (I2PP2A) (Santa Cruz Biotechnology); monoclonal anti-Abl (Ab-3), (EMD); monoclonal anti-phosphotyrosine 4G10 monoclonal anti-PP2Ac, clone 1D6 (Upstate Inc.); monoclonal anti-hnRNP A1 (9H10) (G. Dreyfuss, University of Pennsylvania, Philadelphia, PA); monoclonal anti-GRB2 (BD Biosciences).

Analysis of apoptosis and caspase activation

Apoptosis was measured using the Annexin V–FITC apoptosis detection kit (BD Biosciences) according to the manufacturer's instructions. Briefly, FTY720-treated and untreated cells were Annexin V-FITC- and propidium iodide-stained for 15 minutes in binding buffer (10 mM HEPES, pH 7.4, 140 mM NaCl, 2.5 mM CaCl₂) and analyzed by flow cytometry using a FACSCalibur (BD Biosciences). Likewise, caspase-3/7 activities were measured on untreated and FTY720-treated cells using the caspase Glo-3/7 assay kit (Promega Corp.). Briefly, 5×10³ cells were plated in a white-walled 96-well plate, and the Z-DEVD reagent, a luminogenic caspase 3/7 substrate, which contains the tetrapeptide Asp-Glu-Val-Asp, was added with a 1:1 ratio of reagent to cell solution. After 90 minutes at room temperature, the substrate cleavage by activated caspase-3 and -7, and the intensity of a luminescent signal was measured by a Fluoroskan Ascent FL luminometer (Thermo Electron Corp.). Differences in caspase-3/7 activity in FTY720-treated cells compared with untreated cells are expressed as fold-change in luminescence.

Phosphatase assays

PP2A phosphatase assays were carried out using the PP2A IP phosphatase assay kit (Upstate). Briefly, protein lysates in 100 μ l of 20 mM HEPES (pH 7.0), 100 mM NaCl, 5 μ g of PP2Ac antibody (Upstate), and 25 μ l of Protein A-agarose were added to 400 μ l of 50 mM Tris (pH 7.0)/100 mM CaCl₂, and IPs were carried out at 4°C for 2 hr. IPs were washed and used in the phosphatase reaction according to the manufacturer's protocol.

Clonogenic assays

Clonogenic assays were performed by plating 5 \times 10⁴ cells from primary human NBM, CML, and Ph1 ALL progenitors in 0.9% MethoCult H4230 (StemCell Technologies Inc.). CML and NBM^{CD34+} cells were plated in the presence of recombinant human IL-3 (100 ng/ml); Ph1 ALL and NBM^{CD34+/CD19+} cells were plated in the presence of recombinant human IL-7 (100 ng/ml). Colonies (>125 μ m) were scored 15 days later.

Leukemogenesis in SCID mice

Four- to six-week-old ICR-SCID mice were intra-venously injected with 5 \times 10⁵ 32D-p210^{BCR/ABL}, 32D-p210^{BCR/ABL} (T315I), or BaF3p190^{BCR/ABL} cells (26 mice/group). After engraftment (presence of BCR/ABL+ cells in peripheral blood 7 days after cell injection), cell-injected mice (13 mice/group) were intra-peritoneally treated with 10 mg/kg/day of FTY720 in saline solution. Age-matched mice or mice injected with cells or drugs only (13 mice) served as controls. Four weeks after injection, 3 mice from each group were sacrificed and organs were analyzed for the presence of leukemia. The disease process was monitored by nested RT-PCR-mediated detection of p210 or p190 BCR/ABL transcripts using peripheral blood collected by lateral tail-vein incision. The remaining mice were used for survival

studies that were terminated 24 or 27 weeks after injection. For pathological examination, tissue sections from bone marrow, spleen, liver, kidney, heart, lung, and brain were fixed in formalin, embedded in paraffin, and H&E stained. Peripheral blood was collected by periorbital bleeding, depleted of red blood cells, cytopun onto a glass slide, and May-Grunwald/Giemsa stained.

Intracellular flow cytometry

CML-BC^{CD34+} and NBM^{CD34+} primary cells were stained with the following fluorochrome-conjugated monoclonal antibody directed to surface markers: anti-human CD34-FITC and CD45R α -PE (BD Biosciences) and CD38-Alexa Fluor 700 (eBioscience). Cells were then fixed and permeabilized using the BD Cytotfix/Cytoperm solution kit (BD Biosciences) according to manufacturer instructions. The permeabilized cells were then stained with one of the following unconjugated primary antibodies: rabbit monoclonal anti-I2PP2A (SET, GloboZymes), rabbit polyclonal anti-phospho-Crkl or rabbit polyclonal anti-phospho-Abl (Cell signaling Technology). The detection of the intracellular marker was done by indirect staining with a secondary anti-rabbit f(ab)' antibody fragment conjugated to Alexa Fluor 647 (Invitrogen). Samples were analyzed by acquisition on an LSRII flow cytometer (BD Biosciences).

Long-term culture initiating-cell assays

2×10^6 bone marrow cells from CML-BC were cultured with irradiated M2-10B4 fibroblasts in MyeloCult H5100 medium (StemCell Technologies) supplemented with hydrocortisone according to the manufacturer's instructions. In the first week, the indicated drugs were added to the culture. The medium containing the compounds was then replaced after 7 days, and half of the medium was replaced every 7 days in the following weeks. After 5 weeks of culture, adherent and non-adherent cells were harvested and 5×10^4 cells were plated into

MethoCult medium containing recombinant human SCF, recombinant human GM-CSF, recombinant human IL-3, recombinant human IL-6, recombinant human G-CSF, recombinant human Erythropoietin (StemCell Technologies H4435). Numbers of colonies derived from long-term culture-initiating cells (LTC-ICs) were counted after 20 days.

CFSE Assay

CML-BC^{CD34+} and NBM^{CD34+} cells were stained with CarboxyFluorescein Succinimidyl Ester from the CellTrace CFSE Cell proliferation kit according to manufacture instruction (Invitrogen). A narrow gate of CFSE+ cells was then sorted with a FACS-Ariall (BD Biosciences) in order to allow for resolution of the peaks corresponding to the cell divisions. After nine days in culture in the presence of the indicated drugs the cells were harvested and stained with propidium iodide (PI, in order to exclude dead cells and debris from the analysis), Annexin-V V450 (BD Biosciences) and anti-CD34-Alexa Fluor 647 (eBioscience). The percentage of CFSEmax/CD34+ at nine days cells was representative of the number of cells that never underwent any division over the time in culture. Where indicated the CFSE-stained cells were utilized for the intracellular staining of phospho-Abl, as described above.

RESULTS

SET/hnRNP A1/PP2A interplay

Using Ribonomics (105), SET mRNA was found specifically associated with cytoplasmic hnRNP A1 in the Philadelphia translocation positive K562 human cell line. To validate the SET mRNA-hnRNP A1 association, human SET-specific RT-PCR was carried out on anti-hnRNP A1- and anti-FLAG (unrelated antibody)-immunoprecipitated cytoplasmic mRNAs. High levels of SET mRNA transcripts,

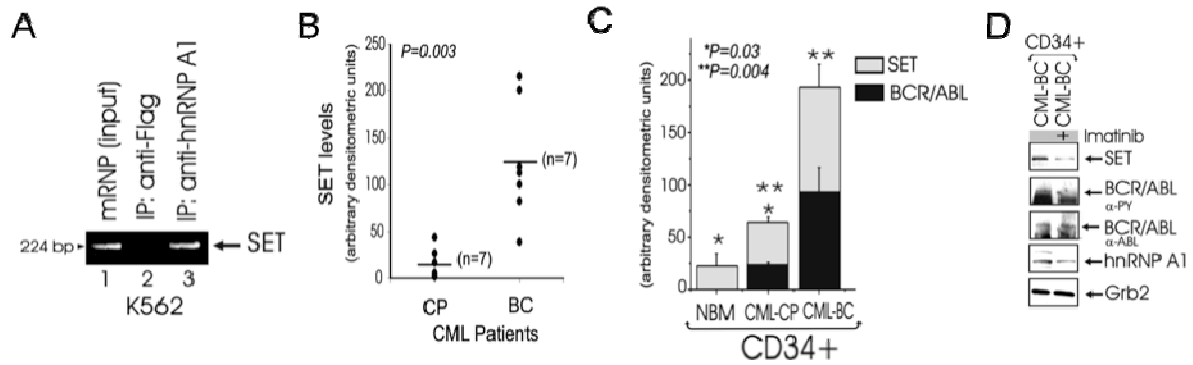


Figure 3. A: RT-PCR shows association of SET mRNA with hnRNP A1 in mRNP-enriched lysates, anti-FLAG-IP (negative control), and anti-hnRNP A1-IP from K562 cells. **B:** scatter plots show SET protein levels in BM cells from seven CML-CP and -BC patient specimens ($p = 0.003$; Wilcoxon rank sum test). **C:** graph shows SET (light bars) and BCR/ABL (dark bars) protein expression (expressed as mean \pm SE of densitometric units after normalization with Grb2 levels) in the CD34⁺ fraction from bone marrow of healthy donors (NBM) ($n = 3$), CML-CP ($n = 3$), and CML-BC ($n = 3$) patients (NBM versus CML-CP, $p = 0.03$; CML-CP versus CML-BC, $p = 0.004$; paired samples t test). **D:** SET, hnRNP A1, and BCR/ABL protein levels in untreated and imatinib-treated CML-BC^{CD34+} cells.

similar to those present in the mRNP-enriched mRNA fraction, were clearly detectable in association with hnRNP A1 (Figure 3A). This suggested that the regulation of SET expression may be dependent on the nucleo-cytoplasmic shuttling of its mRNA bound to hnRNP A1 and, as a consequence, dependent BCR/ABL expression/activity. In fact, SET expression was higher in myeloid CML-BC than in CML-CP patient derived mononuclear marrow cells (Figure 3B); moreover SET protein levels correlated with levels of BCR/ABL, and were higher in myeloid CML-BC^{CD34+} than CMLCP^{CD34+} patient-derived bone marrow progenitor cells, and in CML-CP^{CD34+} patient cells than in CD34⁺ primary cells from healthy donors (NBM) (Figure 3C). Furthermore, treatment of CML-BC^{CD34+} cells with Imatinib decreased SET and, as expected, hnRNP A1 levels (Figure 3D) further indicating that BCR/ABL activity is responsible for SET upregulation in CML-BC. In the BCR/ABL-transformed myeloid cell line 32Dcl3 (32D-BCR/ABL) and in CML-BC^{CD34+} patient cells (Figure 4A) total expression of PP2A was not affected by BCR/ABL expression and/or kinase activity (post-Imatinib treatment). By contrast, PP2A activity, was reduced by 94% and 52% in the CD34⁺ fraction of myeloid CML-BC and CML-CP cells, respectively, compared to the CD34⁺ fraction of NBM cells (Figure 4B), consistent with the notion that SET is an endogenous inhibitor of PP2A phosphatase activity. To determine whether SET upregulation is responsible

for suppression of PP2A activity, we interfered with SET expression by transducing 32D-BCR/ABL cells with a pSuper.retro-shSET construct carrying a short hairpin RNA (shRNA) targeting *SET* mRNA (Figure 4C). Expression of SET shRNA downregulated levels of SET and restored PP2A activity to levels similar to those of 32Dcl3 or imatinib-treated 32D-BCR/ABL cells (Figure 4B), without affecting PP2Ac expression (Figure 4A).

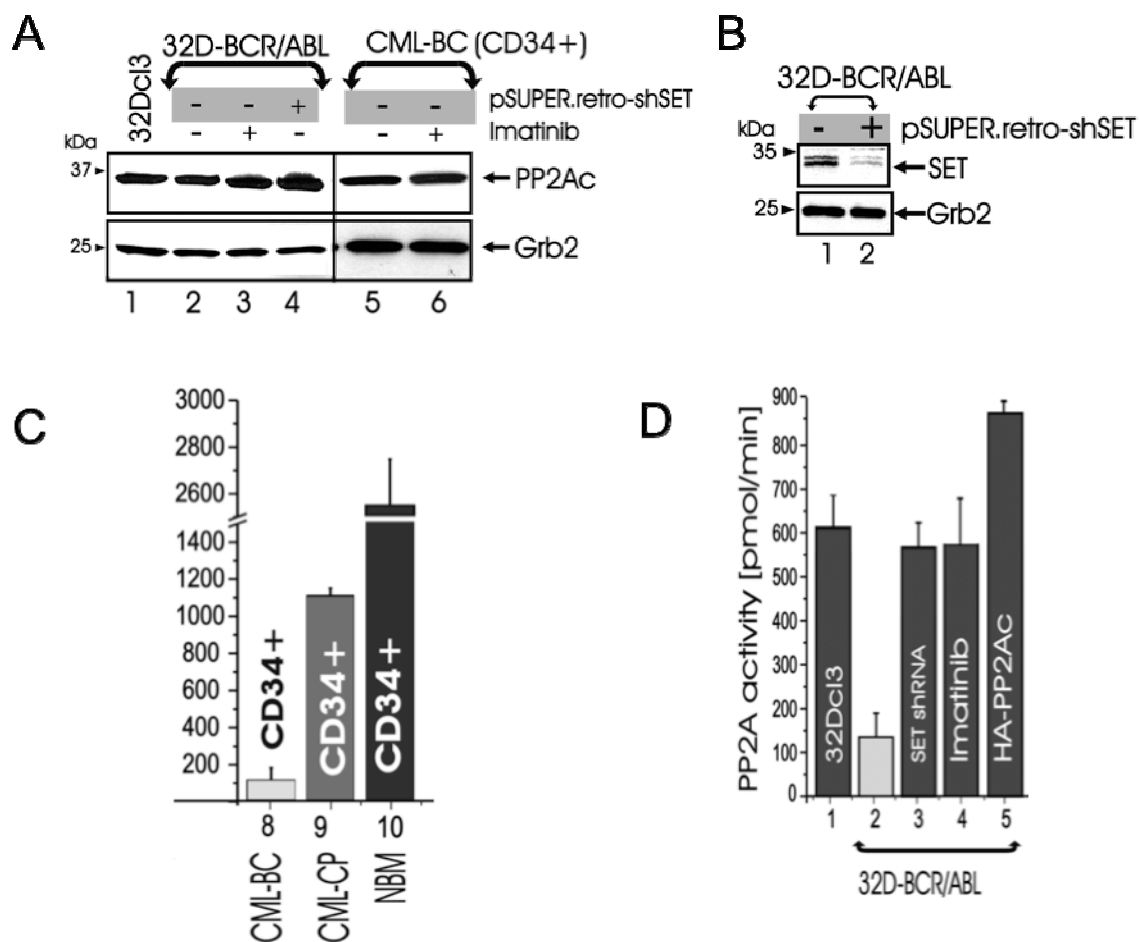


Figure 4. A: protein levels of PP2Ac and Grb2 in the following: 32Dcl3, untreated and imatinib-treated 32D-BCR/ABL and primary CML-BC^{CD34+} marrow cells, and SET shRNA-expressing 32D-BCR/ABL. **B:** effect of the SET shRNA on SET levels **C and D:** PP2A phosphatase assay in 32Dcl3, 32D-BCR/ABL, CML-BCCD34+, CML-CPCD34+, and NBMCD34+ cells, and in BCR/ABL cells expressing the SET shRNA or HA-PP2Ac or treated with imatinib. Bars represent the PP2A activity (expressed as mean \pm SE of three independent experiments performed with the indicated cell lines, and with NBM^{CD34+} (n = 3), CML-CPC^{CD34+} (n = 3), and CML-BC^{CD34+} (n = 3) cells.

Relevance of PP2A activity suppression in CML

The suppression of the phosphatase activity of PP2A appears to be required by BCR/ABL to keep its tyrosine kinase in an active status, in fact

BCR/ABL itself is a target of PP2A. Expression of SET shRNA or HA-PP2A in 32D-BCR/ABL cells suppressed p210^{BCR/ABL} tyrosine phosphorylation and expression (Figure 5A). This effect, was dependent on enhanced PP2A phosphatase activity because both SET overexpression and treatment with the phosphatase inhibitor okadaic acid used at concentrations that inhibit PP2A but not other phosphatases (107), restored BCR/ABL activity and expression in HA-PP2Ac-transduced cells (Figure 5A). Conversely, exposure of Imatinib-sensitive and -resistant (T315I) BCR/ABL+ cell lines and CML-BC^{CD34+} marrow blasts to the PP2A activators (108) forskolin (40 μ M), butyryl-forskolin (water soluble), or 1,9-dideoxy-forskolin (lacks adenylate cyclase-activating function) enhanced PP2A activity abolished BCR/ABL phosphorylation, and induced downregulation of BCR/ABL (Figure 5B). To determine whether PP2A-induced BCR/ABL dephosphorylation renders BCR/ABL more susceptible to proteolysis, we treated PP2A-expressing 32D-BCR/ABL cells with the proteasome inhibitor ALLN. As shown, ALLN restored BCR/ABL expression and, as expected, did not prevent PP2A-induced BCR/ABL tyrosine dephosphorylation (Figure 5C), which precedes and, likely, is required for its degradation. Interestingly, tyrosine dephosphorylation of BCR/ABL appeared to be dependent on the activity of another phosphatase, SHP-1, that had already been described as relevant in BCR/ABL expressing cells (109). In fact restored BCR/ABL phosphorylation was observed after treatment of SET shRNA- and HA-PP2A-expressing 32D-BCR/ABL cells with sodium stibogluconate (SS) (Figure 5D), a specific SHP-1 inhibitor (110). According to these observation it seemed plausible that PP2A inactivation by BCR/ABL in a kinase and dosage dependent manner may be an important step in the progression of CML to the blast phase and that inactivation of the tumor suppressor PP2A may be a necessary event required to keep BCR/ABL kinase activity unrestrained both in chronic phase and, to a greater extent, in blast crisis where BCR/ABL activity is at its highest and

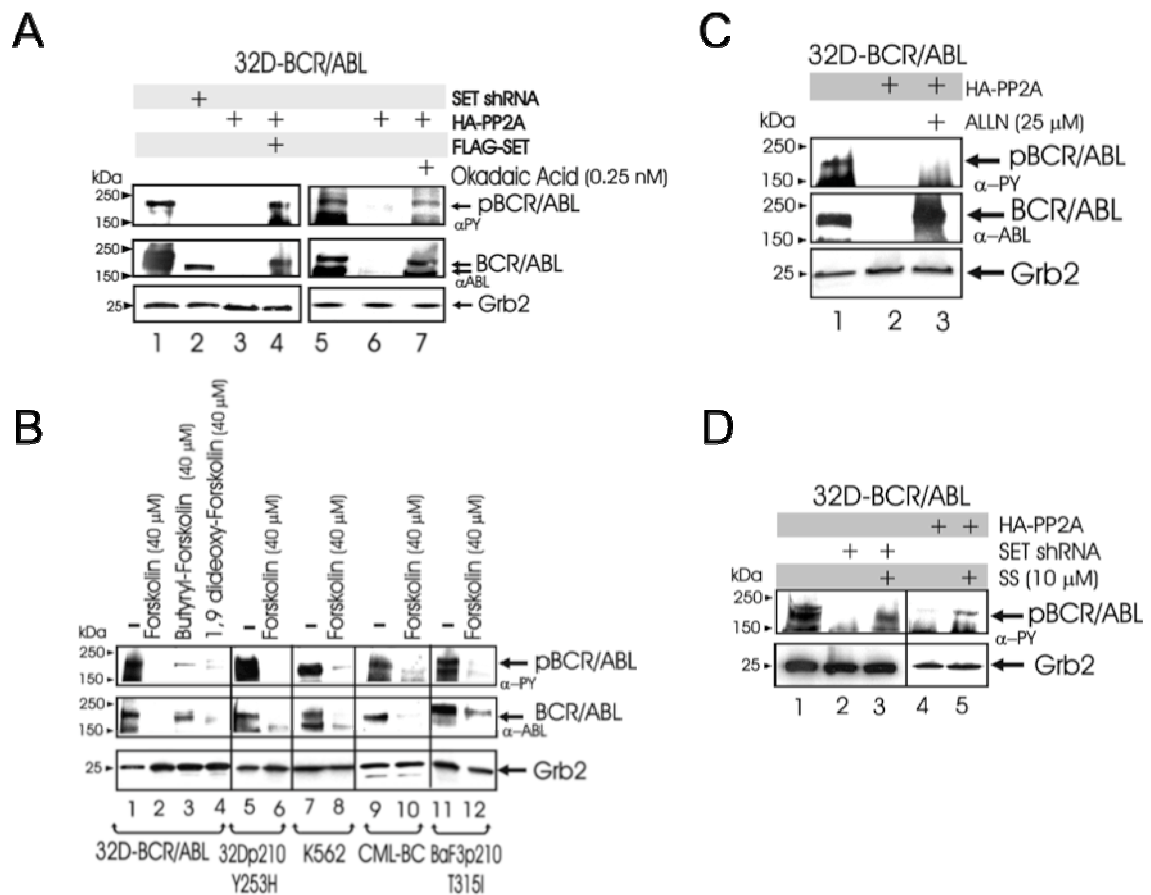


Figure 5. A: p210BCR/ABL activity (α PY) and expression (α -Abl) in 32D-BCR/ABL and in its derivative SET shRNA-, HA-PP2A-, and HA-PP2A/FLAG-SET-expressing cell lines, and in HA-PP2A 32D-BCR/ABL cells treated with okadaic acid. **B:** Effect of the PP2A activators forskolin, butyryl-forskolin, and 1,9-dideoxy-forskolin on BCR/ABL activity and expression in primary CML-BC and imatinib-sensitive and -resistant BCR/ABL cell lines. **C:** p210BCR/ABL activity and expression in parental and untreated or ALLN-treated HA-PP2A-expressing 32D-BCR/ABL cells. **D:** Effect of the SHP-1 inhibitor sodium stibogluconate (SS) on BCR/ABL activity in parental and HA-PP2A- and SET shRNA-expressing 32D-BCR/ABL cells.

PP2A activity, as a consequence, is at its lowest. In this scenario PP2A phosphatase activity induction could be envisioned as a new therapeutic strategy to be used in parallel with tyrosine kinase inhibitors to enhance BCR/ABL inhibition.

Pre-clinical evaluation of the PP2A activator FTY720.

In light of the discovery of the role of PP2A in CML we have assessed the therapeutic potential of the PP2A activator FTY720 (111) (also known as Fingolimod, Novartis) in CML-BC and Philadelphia-positive Acute Lymphoblastic Leukemia (Ph1 ALL, expressing the isoform p190 of the BCR/ABL oncoproteins) on progenitors and in models of *in vitro* and *in vivo* p210 and p190 BCR/ABL

leukemogenesis. FTY720, a synthetic myriocin analog structurally similar to sphingosine, is a water-soluble drug with high oral bioavailability that reversibly arrests lymphocyte trafficking (mainly of CD4⁺ T cells) (71, 112-114). It is currently used as an immunomodulator in Phase III trials for patients with multiple sclerosis. We have investigated and produced data that may support FTY720 as a novel therapeutic approach for patients with Imatinib/Dasatinib-sensitive and -resistant CML and also for Ph1-ALL.

FTY720 restores the activity of PP2A and inhibits that of p210 and p190 BCR/ABL

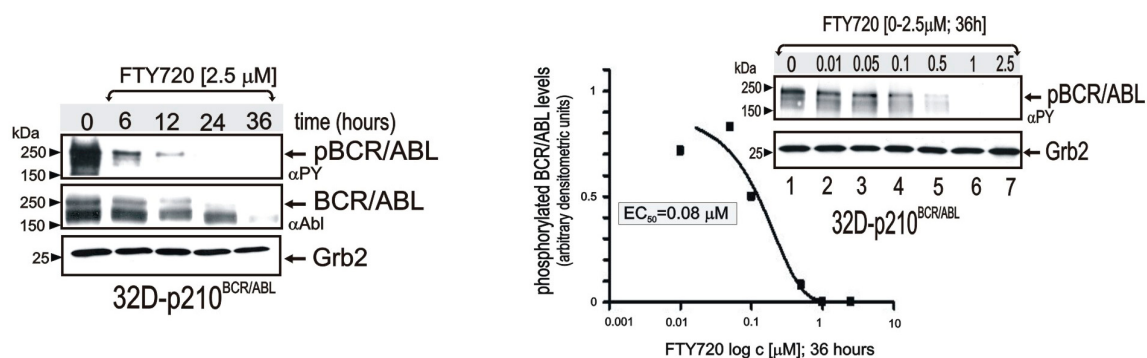


Figure 6: p210^{BCR/ABL} tyrosine phosphorylation (αPY) and expression (αAbl) in 32D-BCR/ABL cells untreated and treated 6–36 hours with 2.5 μM FTY720 (left panel). Graph shows levels of phosphorylated BCR/ABL (expressed as arbitrary densitometric units normalized to Grb2 levels) in 32D-BCR/ABL cells treated for 36 hours with the indicated concentrations of FTY720. Right blot: p210BCR/ABL activity in 32D-p210BCR/ABL cells treated for 36 hours with FTY720.

The dose/time-dependent effect of FTY720 on BCR/ABL-expression/activity was initially assessed in p210^{BCR/ABL}-transformed myeloid precursor 32Dcl3 cells. Levels of tyrosine-phosphorylated (active) p210^{BCR/ABL} were dramatically reduced within 6 hours, barely detectable at 12 hours, and absent at 24 hours of treatment with 2.5 μM FTY720 (Figure 6). Similarly, BCR/ABL expression was downregulated by 2.5 μM FTY720, although this occurred at later time points than dephosphorylation (Figure 6). BCR/ABL-transformed cells were also treated with escalating doses of FTY720 (concentrations of 0.01 to 2.5 μM) (Figure 6). Indeed, FTY720 treatment at 36 hours suppressed BCR/ABL activity with a 50% effective

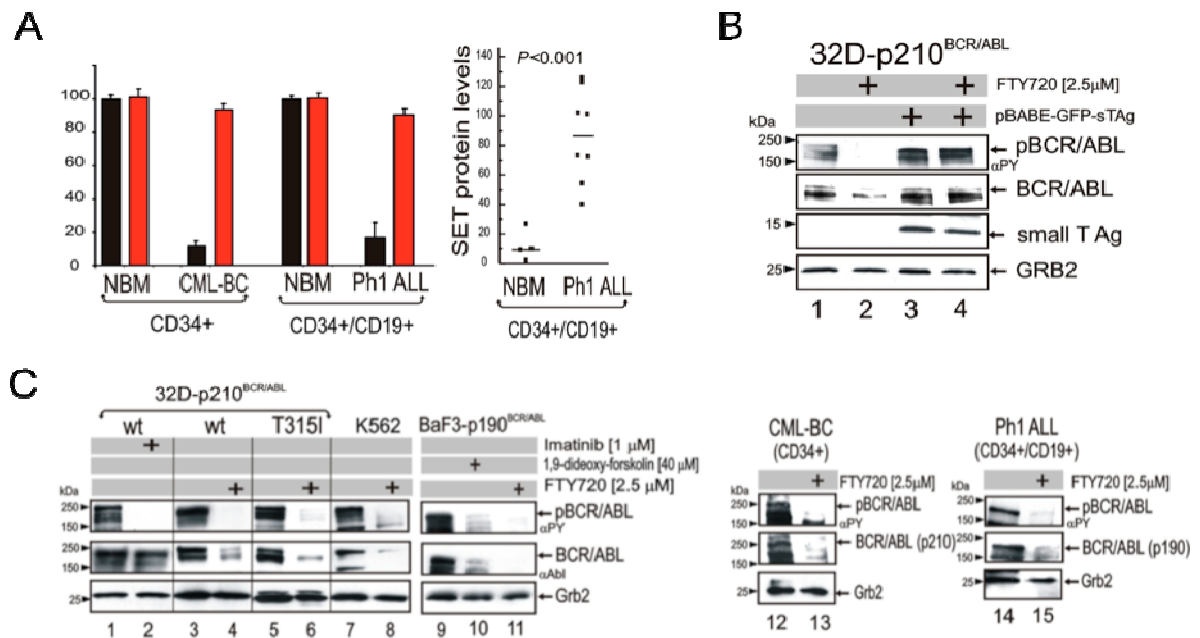


Figure 7. A: PP2A assay in untreated (black bars) and FTY720-treated (red bars) CML-BC^{CD34+} (n = 11), and Ph1 ALL^{CD34+/CD19+} (n = 12); Dot plot shows SET protein levels expressed as arbitrary densitometric units normalized to Grb2 protein levels in NBMCD34+/CD19+ (n = 4) and Ph1 ALL^{CD34+/CD19+} cells (n = 12) (P < 0.001, Student t-test). **B:** Western blots show effect of small-t expression on BCR/ABL activity and expression in untreated and FTY720-treated 32D-p210^{BCR/ABL} cells. **C:** p210^{BCR/ABL} and p190^{BCR/ABL} activity and expression in untreated and FTY720-, Imatinib-, and 1,9-dideoxyforskolin-treated 32D-p210^{BCR/ABL} (wild-type and T315I), K562, BaF3-p190^{BCR/ABL}, CML-BC^{CD34+} (n = 3), and Ph1 ALL^{CD34+/CD19+} cells (n = 6). Grb2 protein levels were detected as control for equal loading.

concentration (EC₅₀) of approximately 80 nM (Figure 6).

As already demonstrated, PP2A activity was reduced by 90% in myeloid CML-BC^{CD34+} compared to the CD34+ fraction from healthy bone marrow (NBM) donors, and also reduced by 82% in Ph1 ALL^{CD34+/CD19+} lymphoid blasts compared to the CD34+/CD19+ fraction from NBM donors (Figure 2A). Consistently, treatment of CML-BC^{CD34+} and Ph1 ALL^{CD34+/CD19+} progenitors with FTY720 in the presence of myeloid or lymphoid cytokines reestablished PP2A activity to levels observed in normal CD34+ myeloid and CD34+/CD19+ lymphoid progenitors (Figure 7A). By contrast, FTY720 did not over induce PP2A activity in primary NBM progenitors (Figure 7A).

As in myeloid CML-BC (62), suppression of PP2A activity in Ph1 ALL is also dependent on enhanced expression of the BCR/ ABL-regulated SET (62). In fact, SET protein levels were significantly higher in Ph1 ALL^{CD34+/CD19+} than in Ph1 NBM^{CD34+/CD19+} progenitors (Figure 7A). Thus enhanced SET expression represents a common mechanism used by both p210 (62) and p190 BCR/ABL oncoproteins

to suppress the phosphatase activity of PP2A.

To further demonstrate that the FTY720-induced suppression of BCR/ABL activity and expression depends on activation of PP2A, parental and BCR/ABL-expressing 32Dcl3 cells were transduced with a retrovirus (pBABE-GFP-sTAg) carrying the PP2A inhibitor SV40 small-t antigen. Expression of small-t (Figure 7B) abrogated the effects of FTY720; in fact, FTY720 treatment was unable to rescue to suppress BCR/ABL activity or expression (Figure 7B) in GFP+ small-t-expressing 32D-BCR/ABL cells.

While imatinib treatment suppresses wild-type BCR/ABL kinase activity only (Figure 7C, lanes 1 and 2), enhanced PP2A activity by FTY720 treatment abolished p210^{BCR/ABL} phosphorylation and induced its downregulation in imatinib-sensitive (32D-p210^{BCR/ABL} and K562) and -resistant (T315I) cell lines (Figure 2B, lanes 3–8) and in primary CML-BC^{CD34+} cells (Figure 7C, lanes 12 and 13). The PP2A-mediated effects of FTY720 were also clearly evident in the lymphoid BaF3-p190^{BCR/ABL} cell line and Ph1 ALL^{CD34+/CD19+} patient cells. In fact, p190^{BCR/ABL} tyrosine phosphorylation and expression were strongly inhibited in BaF3-p190^{BCR/ABL} and IL-7-cultured Ph1 ALL^{CD34+/CD19+} cells treated with FTY720 (Figure 7C, lanes 9-11, 14, and 15). Likewise, 1,9-dideoxyforskolin, a PP2A activator capable of impairing p210-BCR/ABL expression and leukemogenesis (62), efficiently suppressed p190-BCR/ABL activity and expression in BaF3-p190^{BCR/ABL} (Figure 7C, lane 10) and Ph1 ALL^{CD34+/CD19+} cells.

Antileukemic activity of FTY720 in Ph1 leukemia cells in vitro

To assess the biologic effects and therapeutic relevance of FTY720 in Ph1 leukemias, primary bone marrow progenitors from imatinib-sensitive and -resistant CML-BC, imatinib-sensitive and -resistant CML-CP, and Ph1 ALL patients were treated with 2.5 μ M FTY720 for 48–96 hours and used to assess apoptosis and/or

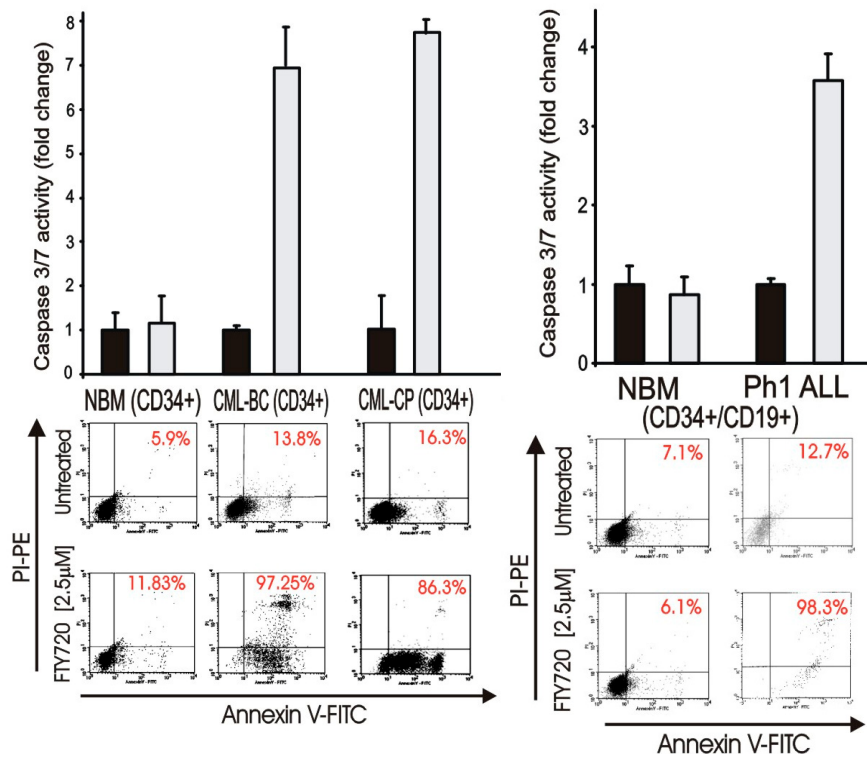


Figure 8. Caspase-3/7 (graphs) and annexin-V/propidium iodide (annexin-V/PI) (flow cytometry dot plots) assays in untreated and FTY720- treated (2.5 µM) NBM^{CD34+} (n = 3), CML-CP^{CD34+} (n = 3), CML-BC^{CD34+} (n = 3) and NBM^{CD34+/CD19+} (n = 3), Ph1 ALL^{CD34+/CD19+} (n = 3) cells

clonogenic potential. For controls we used normal CD34+ and CD34+/CD19+ progenitors (NBM) treated with FTY720 at the same conditions. Consistent with its ability to strongly enhance PP2A activity in Ph1 but not in normal hematopoietic progenitors (Figure 7A), FTY720 markedly induced apoptosis (Figure 4) of IL-3/IL-6/Fit-3L/SCF-cultured and IL-7/Fit-3L/SCF-cultured CML-BC^{CD34+} and Ph1 ALL^{CD34+/CD19+} patient cells. A similar proapoptotic effect was observed in CML-CP^{CD34+} cells treated with FTY720 (Figure 8). In fact, the percentage of apoptosis (annexin V+ cells) in FTY720-treated primary CML-BC^{CD34+} and CML-CP^{CD34+} cells ranged between 86% and 97% (Figure 8). FTY720-treated and Ph1 ALL^{CD34+/CD19+} cells also underwent marked cell death (98% annexin V+ cells) (Figure 8). By contrast, the percentages of apoptotic NBM^{CD34+}, and NBM^{CD34+/CD19+} cells were not significantly altered in FTY720-treated cells compared with untreated cells (Figure 8). Because inhibition of the BCR/ABL-dependent PI3K/Akt pathway triggers caspase-dependent apoptosis (7), strong activation of caspase-3/7 was

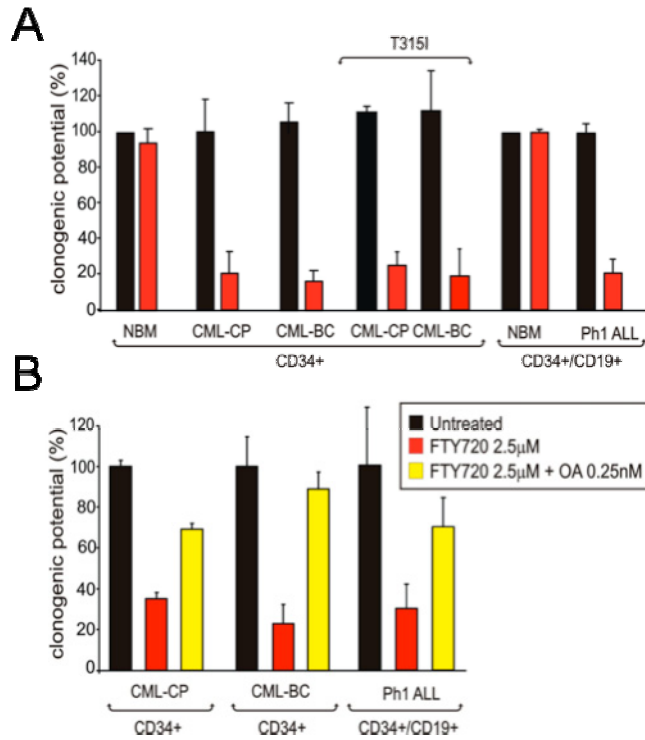


Figure 9. A: IL-3- (for myeloid progenitors) and IL-7-dependent (for lymphoid progenitors) colony-forming ability (mean ± SD) of untreated and FTY720-treated NBM^{CD34+} (n = 4), CML-CP^{CD34+} (n = 3), CML-BC^{CD34+} (n = 11), CML-CP^{CD34+} (T315I) (n = 1), CML-BC^{CD34+} (T315I) (n = 3), NBM^{CD34+/CD19+} (n = 4), and Ph1 ALL^{CD34+/CD19+} (n = 12) cells. As controls, 100% clonogenic potential was attributed to the IL-3- and IL-7-driven colony formation of NBM^{CD34+} and NBM^{CD34+/CD19+}, respectively. **B:** Inhibition of PP2A activity by okadaic acid (0.25 nM) rescues the clonogenic potential of FTY720-treated CML-CP^{CD34+}, CML-BC^{CD34+}, and Ph1 ALL^{CD34+/CD19+} cells

observed in FTY720-treated CML-BC^{CD34+}, CML-CP^{CD34+}, and Ph1 ALL^{CD34+/CD19+} cells (an average of 6-fold increase) but not in normal hematopoietic progenitors (Figure 8).

Similar to the inhibitory effect of forskolin or ectopic PP2Ac expression on colony formation of CML-BC^{CD34+} patient cells (62), a single dose of FTY720 strongly abolished (80%–95% inhibition) the ability of primary imatinib-sensitive and imatinib- and dasatinib-resistant CML-BC^{CD34+} and CML-CP^{CD34+} marrow cells to form IL-3-derived colonies in semisolid medium (Figure 9A). Also, IL-7-driven colony formation of Ph1 ALL^{CD34+/CD19+} lymphoid progenitors was dramatically suppressed (an average of 80% inhibition) by exposure to 2.5 μM FTY720. Moreover, the presence of malignant cells bearing the imatinib and dasatinib-resistant T315I BCR/ABL mutant did not influence the responsiveness of bone marrow CD34+ CML-CP or CML-BC cells to FTY720 (Figure 9A). Conversely,

FTY720 did not affect the IL-3- or IL-7-driven clonogenic potential of NBM^{CD34+} or NBM^{CD34+/CD19+} cells, respectively. Consistent with the important role of PP2A as mediator of the in vitro cytotoxic effect of FTY720, co-treatment with 2.5 μ M FTY720 and 0.25 nM okadaic acid significantly rescued cytokine-dependent colony formation of CML-CP^{CD34+}, CML-BC^{CD34+}, and Ph1 ALL^{CD34+/CD19+} bone marrow progenitors (Figure 9B).

FTY720 suppresses in vivo BCR/ABL leukemogenesis

To assess the effect of FTY720 on an in vivo model of CML and Ph1 ALL we used SCID mice that were intravenously injected with 32D-p210^{BCR/ABL}, BaF3-p190^{BCR/ABL}, or 32D-p210^{BCR/ABL} (T315I) cells ($5 \cdot 10^5$ cells/mouse). Seven days post-injection, cell engraftment was assessed by the presence of circulating BCR/ABL+ cells via nested RT-PCR-mediated detection of p210 or p190 BCR/ABL transcripts in peripheral blood (PB) (Figure 10A). Intra-peritoneal treatment with FTY720 (10 mg/kg/d; LD₅₀ [50% lethal dose] = 300 mg/kg) was then initiated in 13 mice per group (n = 39). As controls, 13 untransplanted mice received daily treatment with FTY720, whereas an identical number of cell-injected mice were left untreated. After 4 weeks of FTY720 treatment, all treated leukemic mice were alive and BCR/ABL negative (Figure 10A), whereas only 3-4 untreated leukemic mice were alive but appeared lethargic and were BCR/ABL positive (Figure 10A). Thus, 3 mice per group were sacrificed and organs were evaluated by visual inspection and light microscopy. Mice injected with wild-type or T315I p210 and p190 BCR/ABL+ cells showed massive splenomegaly, whereas, the morphology of spleens from FTY720-treated BCR/ABL+ cell-injected mice resembled that of control age-matched or FTY720-only treated mice (Figure 10A). Peripheral blood cytospins and hematoxylin and eosin-stained sections of spleen, bone marrow, and liver of 32D-p210^{BCR/ABL}, 32D-p210^{BCR/ABL} (T315I), and BaF3-p190^{BCR/ABL} mice

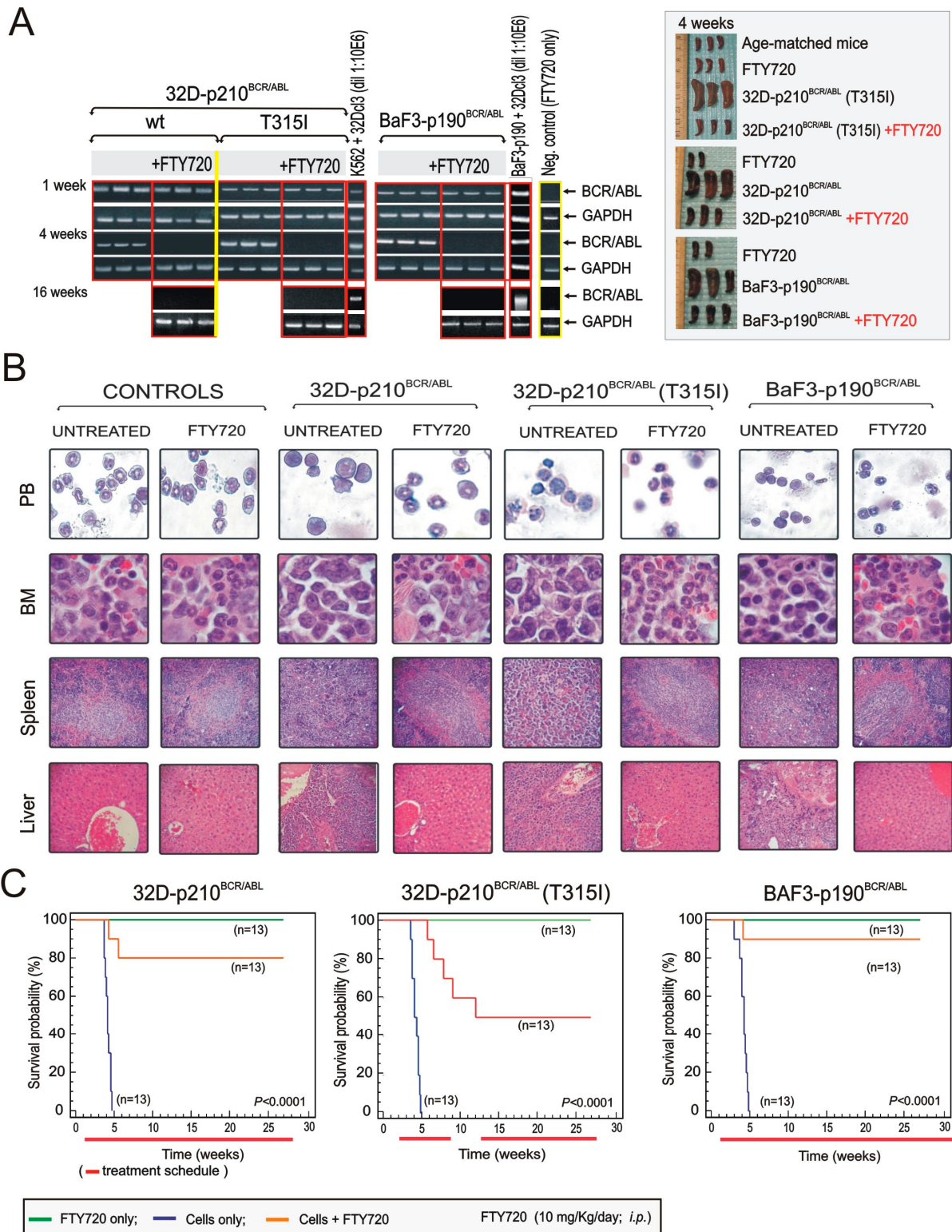


Figure 10. Pharmacologic doses of FTY720 impair *in vivo* imatinib/dasatinib-sensitive and -resistant p210 and p190 BCR/ABL leukemogenesis. (A) Left: Nested RT-PCR for p210 and p190 BCR/ABL indicates the presence of BCR/ABL-expressing cells in the PB of untreated and FTY720-treated mice. Nested RT-PCR performed with RNA from PB of mice treated with FTY720 only (far right lane) and with RNA from a 1:106 dilution of K562 or BaF3p190 (BCR/ABL+ cells) with 32Dc3 cells were used, respectively as negative and positive controls. GAPDH mRNA levels were used as a control. Right panel: Visual analysis of spleens from age-matched and FTY720-treated mice and untreated and FTY720-treated mice injected with the indicated cell lines. (B) May-Grumwald/Giemsa staining of PB and H&E staining of sections from bone marrow, spleen, and liver of untreated and FTY720-treated (4 weeks) control and cell-injected mice. Original magnification, $\times 400$ (PB and bone marrow); $\times 250$ (liver and spleen). (C) Effect of 10 mg/kg/d FTY720 on survival of SCID mice *i.v.* injected with the indicated cells lines ($n = 13$; orange lines). Mice injected with cells only ($n = 13$; blue lines) or drug only ($n = 13$; green lines) were used as controls. The red lines below each graph indicate the treatment regimen. Survival was calculated by the Kaplan-Meier method, and the log-rank test evaluated the differences among survival distributions. Overall, $P < 0.0001$; 32D-p210^{BCR/ABL} untreated versus FTY720-treated, $P < 0.0001$; 32D-p210^{BCR/ABL} (T315I) untreated versus FTY720-treated, $P < 0.001$; and BaF3-p190^{BCR/ABL} untreated versus FTY720-treated, $P < 0.0001$.

treated with vehicle (saline solution) showed extensive infiltration of blast cells with a low degree of myeloid maturation and presence of a large number of circulating blast cells typical of an overt acute myeloid leukemia-like process (Figure 10B). In contrast, spleen, liver, and bone marrow histopathology and peripheral blood from the FTY720-treated leukemic mice (Figure 10B) were similar to that of the age-matched and FTY720-injected control groups (Figure 10B). Consistent with these findings, 80% and 90% of FTY720-treated mice injected with 32D-p210^{BCR/ABL} or BaF3-p190^{BCR/ABL} cells, respectively, were BCR/ABL-negative at 16 weeks (Figure 10A) and all were alive 27 weeks (6.3 months) after transplant (Figure 10C). By contrast, the median survival of mice injected with 32D-p210^{BCR/ABL} or BaF3-p190^{BCR/ABL} cells, only was 4.3 and 4.1 weeks, respectively (Figure 10C). Similarly, all untreated 32D-p210^{BCR/ABL} (T315I) mice died within 5 weeks (median survival, 4.8 weeks) (Figure 10C), while 80% of FTY720-treated T315I mice were alive after 8 weeks of treatment. As expected, all of the control mice were still alive after 27 weeks of daily treatment with FTY720 (10 mg/kg) (Figure 10C). Importantly, no signs of toxicity were observed in control or cell-injected SCID mice that received 10 mg/kg FTY720 for 27 weeks.

FTY720 induces apoptosis of the CML Leukemia Initiating Cells

There is increasing evidence that the Leukemia Initiating Cells in CML are resistant to treatment by tyrosine kinase inhibitors (97). According to the “Cancer Stem Cell Hypothesis” the persistence of a small pool of cells capable of self-propagation (self-renewal) could ultimately lead to relapse of the malignancy (115). In light of these recent findings we have sought to determine whether PP2A may have a role also in the stem cell compartment of both CML-CP and -BC. Indeed we have found that SET-dependent suppression of PP2A activity is a common feature of BCR/ABL+ CD34+/CD38- hematopoietic stem cells (HSC) and of

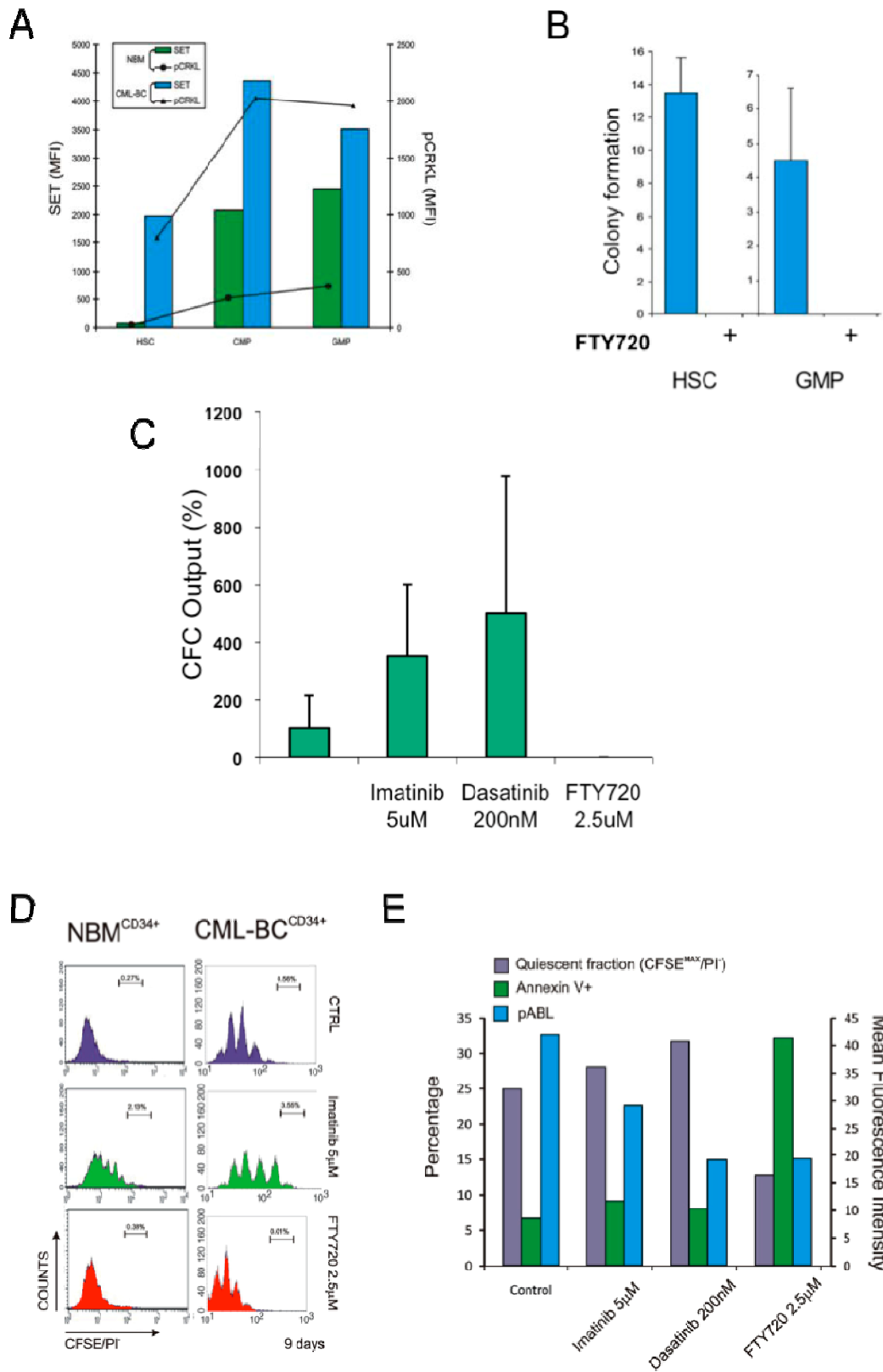


Figure 11: A: levels of intracellular SET staining expressed as mean of fluorescence intensity (MFI) in the HSC/CMP/GMP fractions from CML-BC and NBM cells. Levels of intracellular phospho-Crkl were detected as readout for BCR/ABL activity. **B:** effect of FTY720 on the clonogenic potential of HSC and GMP from CML-BC cells. **C:** CML-BC^{CD34+} cells were exposed to Imatinib, Dasatinib or FTY720 for one week, then assayed for primitive HSC in long-term cultures for 5 weeks. Frequency of LTC-ICs is expressed as a percentage of the CFC output. **D:** CML-BC^{CD34+} and NBM^{CD34+} were stained with CFSE and were left untreated, treated with Imatinib, Dasatinib or FTY720, the numbers represent the percentage of quiescent CFSE^{max}/CD34⁺ input cells, which did not undergo any cell divisions over the time in culture. **E:** flow cytometric analysis of the effects of Imatinib, Dasatinib and FTY720 on the number of CML-BC quiescent CFSE^{max} cells, on the levels (MFI) of BCR/ABL activity (expressed as MFI of pABL staining) and on the induction of apoptosis in CFSE^{max}, expressed as percentage of Annexin V+.

CD34+/CD38+/CD45R α - Granulocyte-Macrophage Progenitors (GMP, the candidate leukemic stem cell in Blast Crisis (76)) but not of the equivalent cell fractions from healthy individuals (Figure 11A). To determine the biological importance and therapeutic implications of impaired PP2A activity in Philadelphia-chromosome stem cells, we evaluated by clonogenic, CFC/replating, LTC-IC and CFSE-mediated cell division-tracking assays, the effects of FTY720, or ectopic PP2Ac expression on survival and self-renewal of BCR/ABL+ stem/progenitor cells isolated from bone marrow of CML-CP and -BC patients. FTY720 treatment severely suppressed the clonogenic potential of CD34+/CD38- and CD34+/CD38+/CD45R α - CML stem/progenitor cells (Figure 11B). Accordingly, self-renewal and long-term repopulating potential of CML leukemic stem cells was markedly impaired by pharmacologic PP2A reactivation. In fact, the CFC output of LTC-IC cultures (6 weeks) deriving from FTY720-treated CML CD34+ cells was greatly inhibited if compared to that of LTC-IC cultures from untreated CML cells (Figure 11C). By contrast, imatinib and dasatinib treatment led to increase or little change in CFC output. Consistent with the ability of FTY720 to impair self-renewal of CML stem cells, a substantial reduction of the CFSE^{MAX}/quiescent cell population was observed in CFSE-stained CD34+ CML cells treated for 6-9 days with FTY720 (Figure 11D). Notably, FTY720 did not exert any significant effect on CFSE-stained CD34+ cells from healthy individuals whereas, as expected, Imatinib and Dasatinib treatment led to an accumulation of CFSE^{MAX} CML cells. Interestingly, only FTY720 triggered apoptosis of CFSE^{MAX} CML cells (41% Annexin V+ cells) even though all of the treatments (Imatinib and Dasatinib included) efficiently inhibited BCR/ABL activity in CFSE^{MAX} cells, suggesting that BCR/ABL-independent PP2A-regulated signals control the survival and self-renewal of CML stem cells (Figure 11E).

DISCUSSION

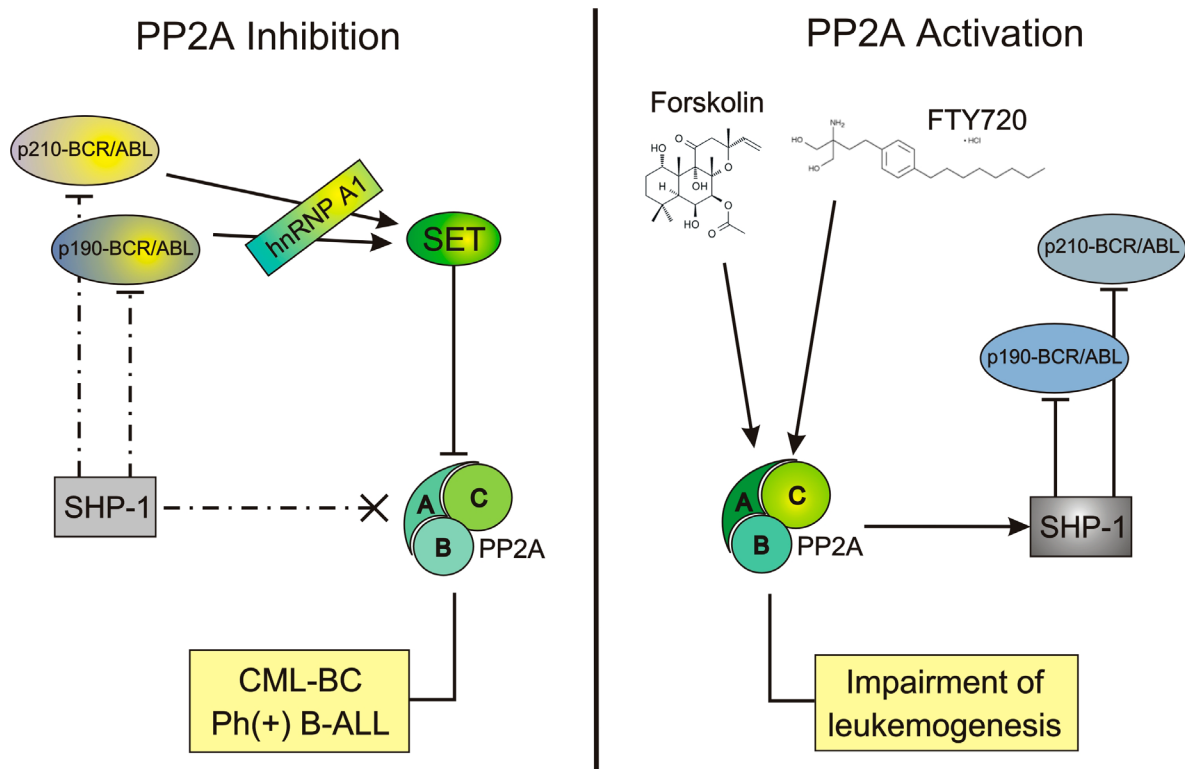


Figure 12. Schematic representation of the BCR/ABL-dependent inhibition of PP2A (left), and of the hypothesis that by reactivating PP2A activity through drug treatment it may be possible to interfere with the activity of the BCR/ABL oncoproteins and, as a consequence, antagonize the leukemic phenotype.

Because of the central role of PP2A in the regulation of cell growth, survival and differentiation, its loss-of-function most likely contributes to blastic transformation of CML and to emergence of Ph1 B-ALL. In this scenario, the BCR/ABL example of kinase-driven cancers may serve as a paradigm for those cancers characterized by exacerbated kinase activity and PP2A loss-of-function. In these tumors in which an oncogenic kinase is the key-player in promoting and sustaining the transformed phenotype, PP2A will have the role of a “gatekeeper”, as its activation may control and restrain the expression/activity of the oncogene itself (62). In contrast, inhibition of PP2A allows increased oncogene activity and induces a cascade of events that may promote disease development and progression by enhancing survival, proliferation and self-renewal, impairing differentiation and increasing genomic instability of the transformed cell clone (Figure 12).

In this study we provide evidence supporting the therapeutic use of drugs that activate PP2A, and specifically FTY720 in Imatinib/Dasatinib-sensitive and -resistant CML-BC and also Ph1 ALL. Specifically, we demonstrate that growth inhibition and induction of caspase-dependent apoptosis by FTY720 depend on interference with p210 and p190 BCR/ABL oncogenic activity. In fact, the FTY720 antiproliferative and proapoptotic effects are preceded by a marked decrease of p210/p190 BCR/ABL activity and expression.

Consistent with the role of PP2A as mediator of the FTY720 effects in Ph1 leukemic progenitors, it has been reported that FTY720 activates PP2A through interaction with purified PP2A/AC dimers (111) and that rescue of PP2A activity induces the SHP-1-dependent p210-BCR/ABL dephosphorylation and proteasome-dependent degradation (62). Furthermore, the evidence that SV40 small-t prevents the FTY720-induced BCR/ABL inactivation and degradation, together with the ability of picomolar concentrations of okadaic acid to rescue the clonogenic potential of CD34+ CML-CP, CML-BC, and Ph1 ALL progenitors and restore both activity and expression of BCR/ABL in FTY720- and 1,9-dideoxyforskolin-treated (26) BCR/ABL+ cells strongly indicates that FTY720 functions through activation of PP2A.

In p210 and p190 BCR/ABL-expressing myeloid and lymphoid cell lines and in patient-derived primary CD34+ CML-CP and -BC and Ph1 ALL^{CD34+/CD19+} bone marrow progenitors, PP2A activation by FTY720 resulted in marked induction of apoptosis and inhibition of cytokine-dependent clonogenic potential regardless of the expression of a wild-type or T315I BCR/ABL oncoprotein. Conversely, no effects were observed in primary myeloid and lymphoid bone marrow CD34+ and CD34+/CD19+ progenitors from healthy individuals. In addition, we show that daily administration of FTY720 for 27 weeks in SCID mice efficiently impaired p210 (wild-type and T315I) and p190 BCR/ABL leukemogenesis without inducing

adverse effects in vivo in hematopoietic and non-hematopoietic organs. In fact, 80%, 50%, and 90% of FTY720-treated mice injected with 32D-p210^{BCR/ABL}, 32D-p210^{BCR/ABL} (T315I), and BaF3-p190^{BCR/ABL} cells, respectively, were alive and with no molecular signs of leukemia after FTY720 treatment.

In summary, because of the central role of PP2A in the regulation of cell growth, survival, and differentiation, it is clear that its loss of function is essential for the development and maintenance of CML-BC and Ph1 ALL. Moreover, the knowledge that functional inactivation of PP2A tumor suppressor activity occurs in myeloid BC CML and Ph1 ALL through the effect of p210 and p190 BCR/ABL on SET expression and that pharmacologic reestablishment of normal PP2A activity antagonizes both in vitro and in vivo BCR/ABL leukemogenesis, highlights the importance of incorporating PP2A-activating drugs into the current therapeutic protocols for those Ph1 leukemias that are nonresponsive or develop resistance to Imatinib, Nilotinib, and/or Dasatinib. Our data, supports the use of this PP2A activator as a novel therapeutic approach for treatment of CML-BC and Ph1 ALL patients who are unresponsive to current kinase inhibitor therapy and, perhaps, for treatment of other cancers characterized by functional loss of PP2A activity.

Moreover our most recent preliminary data support the idea that inactivation of PP2A may be an early event that occur in the Leukemia Initiating Cells in CML-CP and CML-BC; these are known to be refractory to the treatment with the currently developed tyrosine kinase inhibitors. Therefore treatment with PP2A-activating drugs, such as FTY720, may also have the potential of fully eradicating the disease by targeting a small population of leukemic cells that, if left untouched, is fully capable of re-initiate the leukemia and induce relapse.

References

1. Hanahan D, Weinberg RA. The hallmarks of cancer. *Cell*2000 Jan 7;100(1):57-70.
2. Todd R, Wong DT. Oncogenes. *Anticancer Res*1999 Nov-Dec;19(6A):4729-46.
3. Sherr CJ. Principles of tumor suppression. *Cell*2004 Jan 23;116(2):235-46.
4. Yokota J. Tumor progression and metastasis. *Carcinogenesis*2000 Mar;21(3):497-503.
5. Hunter T. Protein kinases and phosphatases: the yin and yang of protein phosphorylation and signaling. *Cell*1995 Jan 27;80(2):225-36.
6. Levine AJ, Broach JR. Oncogenes and cell proliferation. *Curr Opin Genet Dev*1995 Feb;5(1):1-4.
7. Calabretta B, Perrotti D. The biology of CML blast crisis. *Blood*2004 Jun 1;103(11):4010-22.
8. Westbrook CA, Hooberman AL, Spino C, Dodge RK, Larson RA, Davey F, Wurster-Hill DH, Sobol RE, Schiffer C, Bloomfield CD. Clinical significance of the BCR-ABL fusion gene in adult acute lymphoblastic leukemia: a Cancer and Leukemia Group B Study (8762). *Blood*1992 Dec 15;80(12):2983-90.
9. Tonks NK. Protein tyrosine phosphatases: from genes, to function, to disease. *Nat Rev Mol Cell Biol*2006 Nov;7(11):833-46.
10. Perrotti D, Neviani P. ReSETting PP2A tumour suppressor activity in blast

crisis and imatinib-resistant chronic myelogenous leukaemia. *Br J Cancer* 2006 Oct 9;95(7):775-81.

11. Janssens V, Goris J, Van Hoof C. PP2A: the expected tumor suppressor. *Curr Opin Genet Dev* 2005 Feb;15(1):34-41.
12. Janssens V, Goris J. Protein phosphatase 2A: a highly regulated family of serine/threonine phosphatases implicated in cell growth and signalling. *Biochem J* 2001 Mar 1;353(Pt 3):417-39.
13. Schonthal AH. Role of serine/threonine protein phosphatase 2A in cancer. *Cancer Lett* 2001 Sep 10;170(1):1-13.
14. Lechward K, Awotunde OS, Swiatek W, Muszynska G. Protein phosphatase 2A: variety of forms and diversity of functions. *Acta Biochim Pol* 2001;48(4):921-33.
15. Healy AM, Zolnierowicz S, Stapleton AE, Goebel M, DePaoli-Roach AA, Pringle JR. CDC55, a *Saccharomyces cerevisiae* gene involved in cellular morphogenesis: identification, characterization, and homology to the B subunit of mammalian type 2A protein phosphatase. *Mol Cell Biol* 1991 Nov;11(11):5767-80.
16. Mayer-Jaekel RE, Ohkura H, Gomes R, Sunkel CE, Baumgartner S, Hemmings BA, Glover DM. The 55 kd regulatory subunit of *Drosophila* protein phosphatase 2A is required for anaphase. *Cell* 1993 Feb 26;72(4):621-33.
17. Schild A, Schmidt K, Lim YA, Ke Y, Ittner LM, Hemmings BA, Gotz J. Altered levels of PP2A regulatory B/PR55 isoforms indicate role in neuronal differentiation. *Int J Dev Neurosci* 2006 Nov;24(7):437-43.
18. Okamoto K, Li H, Jensen MR, Zhang T, Taya Y, Thorgeirsson SS, Prives C. Cyclin G recruits PP2A to dephosphorylate Mdm2. *Mol Cell* 2002

Apr;9(4):761-71.

19. Voorhoeve PM, Hijmans EM, Bernards R. Functional interaction between a novel protein phosphatase 2A regulatory subunit, PR59, and the retinoblastoma-related p107 protein. *Oncogene*1999 Jan 14;18(2):515-24.
20. Sontag E. Protein phosphatase 2A: the Trojan Horse of cellular signaling. *Cell Signal*2001 Jan;13(1):7-16.
21. Sontag E, Fedorov S, Kamibayashi C, Robbins D, Cobb M, Mumby M. The interaction of SV40 small tumor antigen with protein phosphatase 2A stimulates the map kinase pathway and induces cell proliferation. *Cell*1993 Dec 3;75(5):887-97.
22. Lee TH, Turck C, Kirschner MW. Inhibition of cdc2 activation by INH/PP2A. *Mol Biol Cell*1994 Mar;5(3):323-38.
23. Van Hoof C, Goris J. Phosphatases in apoptosis: to be or not to be, PP2A is in the heart of the question. *Biochim Biophys Acta*2003 May 12;1640(2-3):97-104.
24. Yang J, Fan GH, Wadzinski BE, Sakurai H, Richmond A. Protein phosphatase 2A interacts with and directly dephosphorylates RelA. *J Biol Chem*2001 Dec 21;276(51):47828-33.
25. Ivaska J, Nissinen L, Immonen N, Eriksson JE, Kahari VM, Heino J. Integrin alpha 2 beta 1 promotes activation of protein phosphatase 2A and dephosphorylation of Akt and glycogen synthase kinase 3 beta. *Mol Cell Biol*2002 Mar;22(5):1352-9.
26. Peterson RT, Desai BN, Hardwick JS, Schreiber SL. Protein phosphatase 2A interacts with the 70-kDa S6 kinase and is activated by inhibition of FKBP12- rapamycin-associated protein. *Proc Natl Acad Sci U S A*1999 Apr

13;96(8):4438-42.

27. Montagne J, Stewart MJ, Stocker H, Hafen E, Kozma SC, Thomas G. Drosophila S6 kinase: a regulator of cell size. *Science* 1999 Sep 24;285(5436):2126-9.
28. Hornstein E, Tang H, Meyuhas O. Mitogenic and nutritional signals are transduced into translational efficiency of TOP mRNAs. *Cold Spring Harb Symp Quant Biol* 2001;66:477-84.
29. Li X, Yost HJ, Virshup DM, Seeling JM. Protein phosphatase 2A and its B56 regulatory subunit inhibit Wnt signaling in *Xenopus*. *Embo J* 2001 Aug 1;20(15):4122-31.
30. Xu Y, Xing Y, Chen Y, Chao Y, Lin Z, Fan E, Yu JW, Strack S, Jeffrey PD, Shi Y. Structure of the protein phosphatase 2A holoenzyme. *Cell* 2006 Dec 15;127(6):1239-51.
31. Longin S, Zwaenepoel K, Louis JV, Dilworth S, Goris J, Janssens V. Selection of protein phosphatase 2A regulatory subunits is mediated by the C terminus of the catalytic subunit. *J Biol Chem* 2007 Sep 14;282(37):26971-80.
32. Li M, Damuni Z. I1PP2A and I2PP2A. Two potent protein phosphatase 2A-specific inhibitor proteins. *Methods Mol Biol* 1998;93:59-66.
33. Junttila MR, Puustinen P, Niemela M, Ahola R, Arnold H, Bottzauw T, Ala-aho R, Nielsen C, Ivaska J, Taya Y, Lu SL, Lin S, Chan EK, Wang XJ, Grenman R, Kast J, Kallunki T, Sears R, Kahari VM, Westermarck J. CIP2A inhibits PP2A in human malignancies. *Cell* 2007 Jul 13;130(1):51-62.
34. Kovacech B, Kontsekova E, Zilka N, Novak P, Skrabana R, Filipcik P, Iqbal K, Novak M. A novel monoclonal antibody DC63 reveals that inhibitor 1 of protein phosphatase 2A is preferentially nuclearly localised in human brain.

35. Li M, Makkinje A, Damuni Z. The myeloid leukemia-associated protein SET is a potent inhibitor of protein phosphatase 2A. *J Biol Chem*1996 May 10;271(19):11059-62.
36. Adachi Y, Pavlakis GN, Copeland TD. Identification and characterization of SET, a nuclear phosphoprotein encoded by the translocation break point in acute undifferentiated leukemia. *J Biol Chem*1994 Jan 21;269(3):2258-62.
37. Adler HT, Nallaseth FS, Walter G, Tkachuk DC. HRX leukemic fusion proteins form a heterocomplex with the leukemia-associated protein SET and protein phosphatase 2A. *J Biol Chem*1997 Nov 7;272(45):28407-14.
38. Bialojan C, Takai A. Inhibitory effect of a marine-sponge toxin, okadaic acid, on protein phosphatases. Specificity and kinetics. *Biochem J*1988 Nov 15;256(1):283-90.
39. Arroyo JD, Hahn WC. Involvement of PP2A in viral and cellular transformation. *Oncogene*2005 Nov 21;24(52):7746-55.
40. Sablina AA, Chen W, Arroyo JD, Corral L, Hector M, Bulmer SE, DeCaprio JA, Hahn WC. The tumor suppressor PP2A Abeta regulates the RalA GTPase. *Cell*2007 Jun 1;129(5):969-82.
41. Francia G, Poulosom R, Hanby AM, Mitchell SD, Williams G, McKee P, Hart IR. Identification by differential display of a protein phosphatase-2A regulatory subunit preferentially expressed in malignant melanoma cells. *Int J Cancer*1999 Aug 27;82(5):709-13.
42. Ito A, Kataoka TR, Watanabe M, Nishiyama K, Mazaki Y, Sabe H, Kitamura Y, Nojima H. A truncated isoform of the PP2A B56 subunit promotes cell motility through paxillin phosphorylation. *Embo J*2000 Feb 15;19(4):562-71.

43. Chen W, Possemato R, Campbell KT, Plattner CA, Pallas DC, Hahn WC. Identification of specific PP2A complexes involved in human cell transformation. *Cancer Cell*2004 Feb;5(2):127-36.
44. Ito A, Koma Y, Watabe K, Nagano T, Endo Y, Nojima H, Kitamura Y. A truncated isoform of the protein phosphatase 2A B56gamma regulatory subunit may promote genetic instability and cause tumor progression. *Am J Pathol*2003 Jan;162(1):81-91.
45. Silverstein AM, Barrow CA, Davis AJ, Mumby MC. Actions of PP2A on the MAP kinase pathway and apoptosis are mediated by distinct regulatory subunits. *Proc Natl Acad Sci U S A*2002 Apr 2;99(7):4221-6.
46. Li X, Scuderi A, Letsou A, Virshup DM. B56-associated protein phosphatase 2A is required for survival and protects from apoptosis in *Drosophila melanogaster*. *Mol Cell Biol*2002 Jun;22(11):3674-84.
47. Calin GA, di Iasio MG, Caprini E, Vorechovsky I, Natali PG, Sozzi G, Croce CM, Barbanti-Brodano G, Russo G, Negrini M. Low frequency of alterations of the alpha (PPP2R1A) and beta (PPP2R1B) isoforms of the subunit A of the serine-threonine phosphatase 2A in human neoplasms. *Oncogene*2000 Feb 24;19(9):1191-5.
48. Ruediger R, Pham HT, Walter G. Alterations in protein phosphatase 2A subunit interaction in human carcinomas of the lung and colon with mutations in the A beta subunit gene. *Oncogene*2001 Apr 5;20(15):1892-9.
49. Takagi Y, Futamura M, Yamaguchi K, Aoki S, Takahashi T, Saji S. Alterations of the PPP2R1B gene located at 11q23 in human colorectal cancers. *Gut*2000 Aug;47(2):268-71.
50. Esplin ED, Ramos P, Martinez B, Tomlinson GE, Mumby MC, Evans GA. The glycine 90 to aspartate alteration in the A beta subunit of PP2A (PPP2R1B)

associates with breast cancer and causes a deficit in protein function. *Genes Chromosomes Cancer* 2006 Feb;45(2):182-90.

51. Wang SS, Esplin ED, Li JL, Huang L, Gazdar A, Minna J, Evans GA. Alterations of the PPP2R1B gene in human lung and colon cancer. *Science* 1998 Oct 9;282(5387):284-7.
52. Baysal BE, Willett-Brozick JE, Taschner PE, Dauwerse JG, Devilee P, Devlin B. A high-resolution integrated map spanning the SDHD gene at 11q23: a 1.1-Mb BAC contig, a partial transcript map and 15 new repeat polymorphisms in a tumour-suppressor region. *Eur J Hum Genet* 2001 Feb;9(2):121-9.
53. Camonis JH, White MA. Ral GTPases: corrupting the exocyst in cancer cells. *Trends Cell Biol* 2005 Jun;15(6):327-32.
54. Tamaki M, Goi T, Hirono Y, Katayama K, Yamaguchi A. PPP2R1B gene alterations inhibit interaction of PP2A-A β and PP2A-C proteins in colorectal cancers. *Oncol Rep* 2004 Mar;11(3):655-9.
55. Chen W, Arroyo JD, Timmons JC, Possemato R, Hahn WC. Cancer-associated PP2A A α subunits induce functional haploinsufficiency and tumorigenicity. *Cancer Res* 2005 Sep 15;65(18):8183-92.
56. Trotman LC, Alimonti A, Scaglioni PP, Koutcher JA, Cordon-Cardo C, Pandolfi PP. Identification of a tumour suppressor network opposing nuclear Akt function. *Nature* 2006 May 25;441(7092):523-7.
57. Soo Hoo L, Zhang JY, Chan EK. Cloning and characterization of a novel 90 kDa 'companion' auto-antigen of p62 overexpressed in cancer. *Oncogene* 2002 Jul 25;21(32):5006-15.
58. Arnold HK, Sears RC. Protein phosphatase 2A regulatory subunit B56 α

associates with c-myc and negatively regulates c-myc accumulation. *Mol Cell Biol*2006 Apr;26(7):2832-44.

59. Sears RC. The life cycle of C-myc: from synthesis to degradation. *Cell Cycle*2004 Sep;3(9):1133-7.
60. Yeh E, Cunningham M, Arnold H, Chasse D, Monteith T, Ivaldi G, Hahn WC, Stukenberg PT, Shenolikar S, Uchida T, Counter CM, Nevins JR, Means AR, Sears R. A signalling pathway controlling c-Myc degradation that impacts oncogenic transformation of human cells. *Nat Cell Biol*2004 Apr;6(4):308-18.
61. Escamilla-Powers JR, Sears RC. A conserved pathway that controls c-Myc protein stability through opposing phosphorylation events occurs in yeast. *J Biol Chem*2007 Feb 23;282(8):5432-42.
62. Neviani P, Santhanam R, Trotta R, Notari M, Blaser BW, Liu S, Mao H, Chang JS, Galiotta A, Uttam A, Roy DC, Valtieri M, Bruner-Klisovic R, Caligiuri MA, Bloomfield CD, Marcucci G, Perrotti D. The tumor suppressor PP2A is functionally inactivated in blast crisis CML through the inhibitory activity of the BCR/ABL-regulated SET protein. *Cancer Cell*2005 Nov;8(5):355-68.
63. Neviani P, Santhanam R, Oaks JJ, Eiring AM, Notari M, Blaser BW, Liu S, Trotta R, Muthusamy N, Gambacorti-Passerini C, Druker BJ, Cortes J, Marcucci G, Chen CS, Verrills NM, Roy DC, Caligiuri MA, Bloomfield CD, Byrd JC, Perrotti D. FTY720, a new alternative for treating blast crisis chronic myelogenous leukemia and Philadelphia chromosome-positive acute lymphocytic leukemia. *J Clin Invest*2007 Sep;117(9):2408-21.
64. Kalla C, Scheuermann MO, Kube I, Schlotter M, Mertens D, Dohner H, Stilgenbauer S, Lichter P. Analysis of 11q22-q23 deletion target genes in B-cell chronic lymphocytic leukaemia: evidence for a pathogenic role of NPAT,

CUL5, and PPP2R1B. *Eur J Cancer*2007 May;43(8):1328-35.

65. Dohner H, Stilgenbauer S, James MR, Benner A, Weilguni T, Bentz M, Fischer K, Hunstein W, Lichter P. 11q deletions identify a new subset of B-cell chronic lymphocytic leukemia characterized by extensive nodal involvement and inferior prognosis. *Blood*1997 Apr 1;89(7):2516-22.
66. Zhu Y, Loukola A, Monni O, Kuokkanen K, Franssila K, Elonen E, Vilpo J, Joensuu H, Kere J, Aaltonen L, Knuutila S. PPP2R1B gene in chronic lymphocytic leukemias and mantle cell lymphomas. *Leuk Lymphoma*2001 Mar;41(1-2):177-83.
67. Liu Q, Zhao X, Frizzera F, Ma Y, Santhanam R, Jarjoura D, Lehman A, Perrotti D, Chen CS, Dalton JT, Muthusamy N, Byrd JC. FTY720 demonstrates promising preclinical activity for chronic lymphocytic leukemia and lymphoblastic leukemia/lymphoma. *Blood*2008 Jan 1;111(1):275-84.
68. Dumont FJ. Fingolimod. Mitsubishi Pharma/Novartis. *IDrugs*2005 Mar;8(3):236-53.
69. Virley DJ. Developing therapeutics for the treatment of multiple sclerosis. *NeuroRx*2005 Oct;2(4):638-49.
70. Brinkmann V. FTY720: mechanism of action and potential benefit in organ transplantation. *Yonsei Med J*2004 Dec 31;45(6):991-7.
71. Kovarik JM, Schmouder R, Barilla D, Riviere GJ, Wang Y, Hunt T. Multiple-dose FTY720: tolerability, pharmacokinetics, and lymphocyte responses in healthy subjects. *J Clin Pharmacol*2004 May;44(5):532-7.
72. Melo JV. The diversity of BCR-ABL fusion proteins and their relationship to leukemia phenotype. *Blood*1996 Oct 1;88(7):2375-84.
73. Johansson B, Fioretos T, Mitelman F. Cytogenetic and molecular genetic

evolution of chronic myeloid leukemia. *Acta Haematol*2002;107(2):76-94.

74. Barnes DJ, Schultheis B, Adedeji S, Melo JV. Dose-dependent effects of Bcr-Abl in cell line models of different stages of chronic myeloid leukemia. *Oncogene*2005 Jun 13.
75. Elmaagacli AH, Beelen DW, Opalka B, Seeber S, Schaefer UW. The amount of BCR-ABL fusion transcripts detected by the real-time quantitative polymerase chain reaction method in patients with Philadelphia chromosome positive chronic myeloid leukemia correlates with the disease stage. *Ann Hematol*2000 Aug;79(8):424-31.
76. Jamieson CH, Ailles LE, Dylla SJ, Muijtjens M, Jones C, Zehnder JL, Gotlib J, Li K, Manz MG, Keating A, Sawyers CL, Weissman IL. Granulocyte-macrophage progenitors as candidate leukemic stem cells in blast-crisis CML. *N Engl J Med*2004 Aug 12;351(7):657-67.
77. Perrotti D, Calabretta B. Post-transcriptional mechanisms in BCR/ABL leukemogenesis: role of shuttling RNA-binding proteins. *Oncogene*2002 Dec 9;21(56):8577-83.
78. Perrotti D, Cesi V, Trotta R, Guerzoni C, Santilli G, Campbell K, Iervolino A, Condorelli F, Gambacorti-Passerini C, Caligiuri MA, Calabretta B. BCR-ABL suppresses C/EBPalpha expression through inhibitory action of hnRNP E2. *Nat Genet*2002 Jan;30(1):48-58.
79. Melo JV, Deininger MW. Biology of chronic myelogenous leukemia--signaling pathways of initiation and transformation. *Hematol Oncol Clin North Am*2004 Jun;18(3):545-68, vii-viii.
80. Perrotti D, Turturro F, Neviani P. BCR/ABL, mRNA translation and apoptosis. *Cell Death Differ*2005 Jun;12(6):534-40.

81. Skorski T. BCR/ABL regulates response to DNA damage: the role in resistance to genotoxic treatment and in genomic instability. *Oncogene*2002 Dec 9;21(56):8591-604.
82. Trotta R, Vignudelli T, Candini O, Intine RV, Pecorari L, Guerzoni C, Santilli G, Byrom MW, Goldoni S, Ford LP, Caligiuri MA, Maraia RJ, Perrotti D, Calabretta B. BCR/ABL activates mdm2 mRNA translation via the La antigen. *Cancer Cell*2003 Feb;3(2):145-60.
83. Donato NJ, Wu JY, Stapley J, Lin H, Arlinghaus R, Aggarwal BB, Shishodia S, Albitar M, Hayes K, Kantarjian H, Talpaz M. Imatinib mesylate resistance through BCR-ABL independence in chronic myelogenous leukemia. *Cancer Res*2004 Jan 15;64(2):672-7.
84. Dai Y, Rahmani M, Corey SJ, Dent P, Grant S. A Bcr/Abl-independent, Lyn-dependent form of imatinib mesylate (STI-571) resistance is associated with altered expression of Bcl-2. *J Biol Chem*2004 Aug 13;279(33):34227-39.
85. Druker BJ, Tamura S, Buchdunger E, Ohno S, Segal GM, Fanning S, Zimmermann J, Lydon NB. Effects of a selective inhibitor of the Abl tyrosine kinase on the growth of Bcr-Abl positive cells. *Nat Med*1996 May;2(5):561-6.
86. Deininger M, Buchdunger E, Druker BJ. The development of imatinib as a therapeutic agent for chronic myeloid leukemia. *Blood*2005 Apr 1;105(7):2640-53.
87. Roy L, Guilhot J, Krahnke T, Guerci-Bresler A, Druker BJ, Larson RA, O'Brien S G, So C, Massimini G, Guilhot F. Survival advantage from Imatinib compared to the combination Interferon- α plus Cytarabine in chronic phase CML: historical comparison between two phase III trials. *Blood*2006 Apr 20.
88. Hughes TP, Kaeda J, Branford S, Rudzki Z, Hochhaus A, Hensley ML,

- Gathmann I, Bolton AE, van Hoomissen IC, Goldman JM, Radich JP. Frequency of major molecular responses to imatinib or interferon alfa plus cytarabine in newly diagnosed chronic myeloid leukemia. *N Engl J Med* 2003 Oct 9;349(15):1423-32.
89. Copland M, Hamilton A, Elrick LJ, Baird JW, Allan EK, Jordanides N, Barow M, Mountford JC, Holyoake TL. Dasatinib (BMS-354825) targets an earlier progenitor population than imatinib in primary CML, but does not eliminate the quiescent fraction. *Blood* 2006 Feb 9.
90. Shah NP, Sawyers CL. Mechanisms of resistance to STI571 in Philadelphia chromosome-associated leukemias. *Oncogene* 2003 Oct 20;22(47):7389-95.
91. O'Hare T, Walters DK, Stoffregen EP, Jia T, Manley PW, Mestan J, Cowan-Jacob SW, Lee FY, Heinrich MC, Deininger MW, Druker BJ. In vitro activity of Bcr-Abl inhibitors AMN107 and BMS-354825 against clinically relevant imatinib-resistant Abl kinase domain mutants. *Cancer Res* 2005 Jun 1;65(11):4500-5.
92. Deininger MWN, Bradeen H, Jia T, O' Hare T, Willis SG, Lee F, B.J. D. Comparison of Imatinib, AMN107 and Dasatinib in an Accelerated Cell-Based Mutagenesis Screen. . *Blood [Abstract]*. 2005;106(11):691.
93. Talpaz M, Shah NP, Kantarjian H, Donato N, Nicoll J, Paquette R, Cortes J, O'Brien S, Nicaise C, Bleickardt E, Blackwood-Chirchir MA, Iyer V, Chen TT, Huang F, Decillis AP, Sawyers CL. Dasatinib in imatinib-resistant Philadelphia chromosome-positive leukemias. *N Engl J Med* 2006 Jun 15;354(24):2531-41.
94. Soverini S, Martinelli G, Rosti G, Bassi S, Amabile M, Poerio A, Giannini B, Trabacchi E, Castagnetti F, Testoni N, Luatti S, de Vivo A, Cilloni D, Izzo B, Fava M, Abruzzese E, Alberti D, Pane F, Saglio G, Baccarani M. ABL mutations in late chronic phase chronic myeloid leukemia patients with up-

front cytogenetic resistance to imatinib are associated with a greater likelihood of progression to blast crisis and shorter survival: a study by the GIMEMA Working Party on Chronic Myeloid Leukemia. *J Clin Oncol* 2005 Jun 20;23(18):4100-9.

95. Schultheis B, Szydlo R, Mahon FX, Apperley JF, Melo JV. Analysis of total phosphotyrosine levels in CD34+ cells from CML patients to predict the response to imatinib mesylate treatment. *Blood* 2005 Jun 15;105(12):4893-4.
96. Barnes DJ, Palaiologou D, Panousopoulou E, Schultheis B, Yong AS, Wong A, Pattacini L, Goldman JM, Melo JV. Bcr-Abl expression levels determine the rate of development of resistance to imatinib mesylate in chronic myeloid leukemia. *Cancer Res* 2005 Oct 1;65(19):8912-9.
97. Nicholson E, Holyoake T. The chronic myeloid leukemia stem cell. *Clin Lymphoma Myeloma* 2009;9 Suppl 4:S376-81.
98. Perrotti D, Bonatti S, Trotta R, Martinez R, Skorski T, Salomoni P, Grassilli E, Lozzo RV, Cooper DR, Calabretta B. TLS/FUS, a pro-oncogene involved in multiple chromosomal translocations, is a novel regulator of BCR/ABL-mediated leukemogenesis. *Embo J* 1998 Aug 3;17(15):4442-55.
99. Perrotti D, Iervolino A, Cesi V, Cirinna M, Lombardini S, Grassilli E, Bonatti S, Claudio PP, Calabretta B. BCR-ABL prevents c-jun-mediated and proteasome-dependent FUS (TLS) proteolysis through a protein kinase Cbeta11-dependent pathway. *Mol Cell Biol* 2000 Aug;20(16):6159-69.
100. Iervolino A, Santilli G, Trotta R, Guerzoni C, Cesi V, Bergamaschi A, Gambacorti-Passerini C, Calabretta B, Perrotti D. hnRNP A1 nucleocytoplasmic shuttling activity is required for normal myelopoiesis and BCR/ABL leukemogenesis. *Mol Cell Biol* 2002 Apr;22(7):2255-66.
101. Notari M, Neviani P, Santhanam R, Blaser BW, Chang JS, Galiotta A, Willis

AE, Roy DC, Caligiuri MA, Marcucci G, Perrotti D. A MAPK/HNRPK pathway controls BCR/ABL oncogenic potential by regulating MYC mRNA translation. *Blood* 2006 Mar 15;107(6):2507-16.

102. Fornerod M, Boer J, van Baal S, Jaegle M, von Lindern M, Murti KG, Davis D, Bonten J, Buijs A, Grosveld G. Relocation of the carboxyterminal part of CAN from the nuclear envelope to the nucleus as a result of leukemia-specific chromosome rearrangements. *Oncogene* 1995 May 4;10(9):1739-48.
103. Carlson SG, Eng E, Kim EG, Perlman EJ, Copeland TD, Ballermann BJ. Expression of SET, an inhibitor of protein phosphatase 2A, in renal development and Wilms' tumor. *J Am Soc Nephrol* 1998 Oct;9(10):1873-80.
104. Seidel G, Laurich D, Furstner A. Iron-catalyzed cross-coupling reactions. A scalable synthesis of the immunosuppressive agent FTY720. *J Org Chem* 2004 May 28;69(11):3950-2.
105. Tenenbaum SA, Lager PJ, Carson CC, Keene JD. Ribonomics: identifying mRNA subsets in mRNP complexes using antibodies to RNA-binding proteins and genomic arrays. *Methods* 2002 Feb;26(2):191-8.
106. Cross NC, Feng L, Chase A, Bungey J, Hughes TP, Goldman JM. Competitive polymerase chain reaction to estimate the number of BCR-ABL transcripts in chronic myeloid leukemia patients after bone marrow transplantation. *Blood* 1993 Sep 15;82(6):1929-36.
107. Saydam G, Aydin HH, Sahin F, Selvi N, Oktem G, Terzioglu E, Buyukkececi F, Omay SB. Involvement of protein phosphatase 2A in interferon-alpha-2b-induced apoptosis in K562 human chronic myelogenous leukaemia cells. *Leuk Res* 2003 Aug;27(8):709-17.
108. Feschenko MS, Stevenson E, Nairn AC, Sweadner KJ. A novel cAMP-stimulated pathway in protein phosphatase 2A activation. *J Pharmacol Exp*

Ther2002 Jul;302(1):111-8.

109. Liedtke M, Pandey P, Kumar S, Kharbanda S, Kufe D. Regulation of Bcr-Abl-induced SAP kinase activity and transformation by the SHPTP1 protein tyrosine phosphatase. *Oncogene*1998 Oct 15;17(15):1889-92.
110. Pathak MK, Yi T. Sodium stibogluconate is a potent inhibitor of protein tyrosine phosphatases and augments cytokine responses in hemopoietic cell lines. *J Immunol*2001 Sep 15;167(6):3391-7.
111. Matsuoka Y, Nagahara Y, Ikekita M, Shinomiya T. A novel immunosuppressive agent FTY720 induced Akt dephosphorylation in leukemia cells. *Br J Pharmacol*2003 May;138(7):1303-12.
112. Brinkmann V, Cyster JG, Hla T. FTY720: sphingosine 1-phosphate receptor-1 in the control of lymphocyte egress and endothelial barrier function. *Am J Transplant*2004 Jul;4(7):1019-25.
113. Chiba K, Yanagawa Y, Masubuchi Y, Kataoka H, Kawaguchi T, Ohtsuki M, Hoshino Y. FTY720, a novel immunosuppressant, induces sequestration of circulating mature lymphocytes by acceleration of lymphocyte homing in rats. I. FTY720 selectively decreases the number of circulating mature lymphocytes by acceleration of lymphocyte homing. *J Immunol*1998 May 15;160(10):5037-44.
114. Kahan BD. FTY720: from bench to bedside. *Transplant Proc*2004 Mar;36(2 Suppl):531S-43S.
115. Tan BT, Park CY, Ailles LE, Weissman IL. The cancer stem cell hypothesis: a work in progress. *Lab Invest*2006 Dec;86(12):1203-7.