



Zotarolimus-Eluting Versus Bare-Metal Stents in Uncertain Drug-Eluting Stent Candidates

Marco Valgimigli, MD, PhD,* Athanasios Patialiakas, MD,†† Attila Thury, MD, PhD,§ Eugene McFadden, MD,|| Salvatore Colangelo, MD,¶ Gianluca Campo, MD,† Matteo Tebaldi, MD,† Imre Ungi, MD, PhD,§ Stefano Tondi, MD,# Marco Roffi, MD,** Alberto Menozzi, MD, PhD,†† Nicoletta de Cesare, MD,†† Roberto Garbo, MD,¶ Emanuele Meliga, MD,§§ Luca Testa, MD, PhD,||| Henrique Mesquita Gabriel, MD,¶¶ Flavio Airoldi, MD,## Marco Ferlini, MD,*** Francesco Liistro, MD,††† Antonio Dellavalle, MD,†††† Pascal Vranckx, MD, PhD,§§§ Carlo Briguori, MD, PhD,||||| for the ZEUS Investigators

ABSTRACT

BACKGROUND The use of drug-eluting stents (DES) in patients at high risk of bleeding or thrombosis has not been prospectively studied; limited data are available in patients who have a low restenosis risk.

OBJECTIVES This study sought to compare a hydrophilic polymer-based, second-generation zotarolimus-eluting stent (ZES) with a unique drug fast-release profile versus bare-metal stents (BMS) under similar durations of dual-antiplatelet therapy (DAPT).

METHODS We randomly assigned 1,606 patients with stable or unstable symptoms, and who on the basis of thrombotic bleeding or restenosis risk criteria, qualified as uncertain candidates for DES, to receive ZES or BMS. DAPT duration was on the basis of patient characteristics, rather than stent characteristics, and allowed for a personalized 1-month dual antiplatelet regimen. The primary endpoint was the risk of 1-year major adverse cardiovascular events (MACE), which included death, myocardial infarction (MI), or target vessel revascularization (TVR).

RESULTS Median DAPT duration was 32 days (interquartile range [IQR]: 30 to 180 days) and did not differ between the groups. In the ZES group, 140 patients (17.5%) reached the primary endpoint, compared with 178 patients (22.1%) in the BMS group (hazard ratio: 0.76; 95% confidence interval: 0.61 to 0.95; $p = 0.011$) as a result of lower MI (2.9% vs. 8.1%; $p < 0.001$) and TVR rates (5.9% vs. 10.7%; $p = 0.001$) in the ZES group. Definite or probable stent thrombosis was also significantly reduced in ZES recipients (2.0% vs. 4.1%; $p = 0.019$).

CONCLUSIONS Compared with BMS, DES implantation using a stent with a biocompatible polymer and fast drug-eluting characteristics, combined with an abbreviated, tailored DAPT regimen, resulted in a lower risk of 1-year MACE in uncertain candidates for DES implantation. (Zotarolimus-eluting Endeavor Sprint Stent in Uncertain DES Candidates [ZEUS] Study; [NCT01385319](https://doi.org/10.1185/09545794.2014.281119)) (J Am Coll Cardiol 2015;65:805-15) © 2015 by the American College of Cardiology Foundation.

From the *Thoraxcenter, Erasmus Medical Center, Rotterdam, the Netherlands; †Interventional Cardiology Unit, Azienda Ospedaliero-Universitaria di Ferrara, Ferrara, Italy; ‡Cardiology Department, Crete Naval Hospital, Crete, Greece; §Cardiology Center and University of Szeged, Szeged, Hungary; ||Division of Cardiology, Cork University Hospital, Cork, Ireland; ¶Interventional Cardiology, San Giovanni Bosco Hospital, Torino, Italy; #Azienda Unità Sanitaria Locale di Modena-Ospedale, Baggiovara, Italy; **Division of Cardiology, University Hospital, Geneva, Switzerland; ††Interventional Cardiology Unit, Azienda Ospedaliero-Universitaria di Parma, Parma, Italy; †††Policlinico S. Marco Zingonia, Bergamo, Italy; §§Azienda Ospedaliera Ordine Mauriziano, Torino, Italy; |||Interventional Cardiology, Ist. Clinico S. Ambrogio, IRCCS San Donato, Milan, Italy; ¶¶Hospital de Santa Cruz, Carnaxide, Lisbon, Portugal; ##IRCCS Multimedica Sesto San Giovanni, Milan, Italy; ***Fondazione IRCCS Policlinico San Matteo, Pavia, Italy; ††††Cardiovascular Departments of San Donato Hospital, Arezzo, Italy; †††††Ospedali Riuniti, Savigliano, Italy; §§§Virga Jesse Ziekenhuis, Hasselt, Belgium; and the |||||Clinica Mediterranea, Napoli, Italy. The study is an investigator-driven clinical trial, which received funding from Medtronic through an unrestricted grant to the Consorzio Ferrara Ricerche, which employed dedicated personnel for data monitoring, data management, event adjudication, and independent statistical analysis. Dr. Valgimigli has received honoraria for lectures/advisory board and research grants from Merck, Iroko, Eli Lilly,



ABBREVIATIONS AND ACRONYMS

- BMS** = bare-metal stent(s)
CI = confidence interval
DAPT = dual antiplatelet therapy
DES = drug-eluting stent(s)
HR = hazard ratio
IQR = interquartile range
MACE = major adverse cardiovascular event(s)
MI = myocardial infarction
TVR = target vessel revascularization
ZES = zotarolimus-eluting stent(s)

Compared with bare metal stents (BMS), drug-eluting stents (DES) have consistently been shown to reduce restenosis rates, and consequently, the risk of target vessel failure (1-4). However, due to a higher incidence of very late stent thrombosis, first-generation DES raised safety concerns (5-7). Therefore, to restore safety to a level comparable to that after BMS implantation, a prolonged course of dual-antiplatelet therapy (DAPT) has been recommended after DES implantation (8,9).

SEE PAGE 816

Consequently, the use of DES instead of BMS remains controversial in selected patient and/or lesion subsets, including patients at high thrombosis risk, who may have a higher risk for coronary events after DES implantation, and those at high bleeding risk, in whom long-term DAPT poses safety concerns (9,10). Similarly, patients at a low perceived risk for in-stent restenosis may not qualify as good DES candidates, because the need for prolonged DAPT and the long-term risk for adverse events after DES implantation may outweigh the acknowledged benefit of lower reintervention rates.

The zotarolimus-eluting stent (ZES) is a hydrophilic polymer-based, second-generation device with a uniquely fast drug-release profile (11). The phosphorylcholine coating has been shown to reduce thrombus formation on the coated stent struts compared with BMS (12). Although the rapid-release profile may result in less powerful inhibition of intimal hyperplasia, it may also lead to a more rapid and/or complete stent strut coverage compared with other DES (4,13,14), raising the possibility that it might be feasible to shorten DAPT duration while maintaining superior efficacy compared with BMS (15). This could be evaluated further in dedicated studies.

The purpose of this trial was to assess if ZES implantation, followed by a shorter than the currently recommended course of DAPT, on the basis of the patient's clinical profile (tailored DAPT) and

independent of stent type, would decrease the incidence of 12-month major adverse cardiovascular events (MACE) in uncertain DES recipients, including those with high bleeding or thrombotic risk and those with low restenosis risk, compared with BMS.

METHODS

STUDY DESIGN AND POPULATION. The ZEUS (Zotarolimus-eluting Endeavor sprint stent in Uncertain DES candidates) trial is a multinational, randomized, single-blinded trial, conducted at 20 sites in 4 European countries (Italy, Switzerland, Portugal, and Hungary). It was designed to evaluate the combined efficacy and safety of ZES compared with BMS, in uncertain DES candidates (16). Detailed inclusion and exclusion criteria have been previously described (16) and are detailed in the [Online Appendix](#). In brief, patients who underwent elective, urgent, or emergent percutaneous coronary intervention with intended stent implantation were randomly assigned in a 1:1 fashion to ZES or a thin-strut (thickness <100 μm) BMS, if they were ages 18 years or older and had at least 1 qualifying criterion among the pre-specified uncertain DES recipients. High-bleeding risk status was defined as the following: a clinical indication for treatment with oral anticoagulant agents; recent bleeding episode(s) that required medical attention; previous bleeding episode(s) that required hospitalization if the bleeding diathesis has not been completely resolved (that is, surgical removal of the bleeding source); age older than 80 years; systemic conditions associated with increased bleeding risk (e.g., hematological disorders or any known coagulopathy-determining bleeding diathesis, including history of or current thrombocytopenia, which was defined as platelet count <100,000/mm³ [$<100 \times 10^9/l$]; known anemia, defined as repeatedly documented hemoglobin <10 g/dl; and need for long-term treatment with steroids or nonsteroidal anti-inflammatory drugs. High-risk thrombotic criteria were defined as the following: allergy and/or intolerance to aspirin; allergy and/or intolerance to available P2Y₁₂ inhibitors; planned surgery (other than

and Medtronic; honoraria for advisory board and lectures from The Medicines Company, Eli Lilly Co., Daiichi Sankyo, Inc., St. Jude, and Abbott Vascular; and fees for lectures from Cordis, CID, and Terumo. Dr. Patialiakas has received grants from the Hellenic Cardiological Society and the Hellenic Institution of Cardiology. Dr. McFadden has received fees from Abbott Vascular and Medtronic for Clinical Event Committee adjudications. Dr. Colangelo is a consultant for Abbott. Dr. Roffi has received institutional research grants from Abbott Vascular, Medtronic, Boston Scientific, Biotronik, and Biosensor. Dr. Ferlini has received consulting honoraria from Abbott Vascular and Eli Lilly. All other authors have reported that they have no relationships relevant to the contents of this paper to disclose.

[Listen to this manuscript's audio summary by JACC Editor-in-Chief Dr. Valentin Fuster.](#)

[You can also listen to this issue's audio summary by JACC Editor-in-Chief Dr. Valentin Fuster.](#)

skin) within 12 months of percutaneous coronary intervention; patient with cancer (other than skin) and life expectancy >1 year; and patients with systemic conditions associated with thrombosis diathesis (e.g., hematological disorders and any known systemic conditions determining a prothrombotic state, including immunological disorders). Finally, low restenosis risk was fulfilled if no planned stent <3.0-mm diameter was intended to be implanted, regardless of lesion length, apart from left main coronary artery or saphenous graft intervention (17).

The ethics committees of all participating centers independently approved the protocol, and all participants gave written informed consent.

DEVICES. The Endeavor stent (Medtronic Vascular, Minneapolis, Minnesota) is a cobalt-based alloy stent (91- μ m strut thickness) with a phosphorylcholine polymer (4.8 μ m) loaded with zotarolimus at a dose concentration of 10 μ g/mm stent length. Approximately 95% of the zotarolimus is eluted from the stent within 15 days of implantation, although drug concentrations within surrounding vascular tissue may be detected as late as 30 days after stent deployment.

Although all commercially available thin-strut BMS (strut thickness <100 μ m) were allowed to be used in the study, the Tsunami, (Terumo, Leuven, Belgium), Skylor (Medtronic, Minneapolis, Minnesota), Integrity (Medtronic), Vision (Abbott, Santa Clara, California), and Avant-Garde (CID Vascular, Saluggia, Italy) were the 5 most commonly utilized devices in this stent group.

TREATMENT PROTOCOL AND FOLLOW-UP PROCEDURES.

All eligible patients received aspirin (160 to 325 mg orally or 500 mg intravenously as a loading dose and then 80 to 160 mg orally per day) and clopidogrel (300 or 600 mg orally as a loading dose followed by 75 mg/day), or prasugrel (60 mg loading dose followed by 10 or 5 mg/day) or ticagrelor (180 mg loading dose followed by 90 mg twice daily). Patients who were not eligible for DAPT were treated with either aspirin or clopidogrel (or prasugrel or ticagrelor) monotherapy.

Duration of antiplatelet therapy was pre-specified on the basis of the inclusion criteria. Patients at high risk of bleeding had a pre-specified 30-day DAPT regimen. Patients at high risk of thrombosis had a pre-specified tailored duration of therapy on the basis of the specific condition conferring the high risk of thrombosis (Online Appendix). This included a single antiplatelet regimen for patients intolerant of aspirin or available P2Y₁₂ inhibitors, and a 30-day regimen in stable patients, or 6 to 12 months in unstable patients, in the group at low risk of restenosis.

Unfractionated heparin or bivalirudin was used for anticoagulation during coronary intervention on the basis of guideline-recommended regimens (8,9). Staging was allowed by protocol; in patients allocated to a 30-day course of DAPT who underwent staged intervention(s), therapy had to be prolonged or restarted for 30 additional days.

FOLLOW-UP. Protocol-mandated visits at 30 days, 6 months, and 12 months specifically assessed potential intercurrent adverse events and compliance with medications; a 12-lead electrocardiogram was recorded.

STUDY ENDPOINTS. The purpose of this trial was to assess whether ZES implantation followed by a shorter than the currently recommended course of DAPT, tailored to the patient's clinical profile (tailored DAPT) and independent of stent type, would decrease the incidence of 12-month MACE, including all-cause death, nonfatal myocardial infarction (MI), or any target vessel revascularization (TVR), in uncertain candidates for DES transplantation, including those at high bleeding or high thrombotic risk and those at low restenosis risk (16) compared with BMS.

Secondary endpoints included each component of the primary endpoint: cardiac death; Academic Research Consortium-defined stent thrombosis (18); all-cause or ischemic stroke; target lesion revascularization; and bleeding. All potential event triggers were assessed using source documents obtained from the site and centrally adjudicated by the clinical events committee, whose members were unaware of treatment assignment. Detailed definitions of all study endpoints are provided in the Online Appendix.

STATISTICAL ANALYSIS. Assuming an event rate of 15.0% at 1 year for the primary endpoint in patients assigned to BMS (16), we estimated that at least 1,556 patients would need to be enrolled to detect a 33% reduction in the relative risk of the primary endpoint in the ZES group compared with the BMS group, with a statistical power of 85% at a 2-sided significance level of 0.05. The final sample size was increased to 1,600 patients (16).

Categorical variables were expressed as frequencies (percents), whereas continuous variables were expressed as medians (interquartile ranges [IQRs]). Continuous variables were compared between randomized groups using the Wilcoxon rank-sum test, whereas the Fisher exact test was used for binary variables. Further details of statistical analysis are provided in the Online Appendix. A 2-sided p value <0.05 was considered significant. All analyses were performed on an intention-to-treat basis

| TABLE 1 Baseline Characteristics of Patients* | | |
|--|--------------------------------|--------------------------------|
| | BMS Group (n = 804) | ZES Group (n = 802) |
| Age, yrs | 71.8 ± 12 | 71.8 ± 11 |
| Median | 73.6 | 73.9 |
| Interquartile range | 64.0-81.0 | 63.8-81.0 |
| Range | 31.3-100.2 | 31.6-94.8 |
| Female | 232 (28.9) | 241 (30.0) |
| Body mass index, kg/m ² | | |
| Median | 26.5 | 26.7 |
| Interquartile range | 24.2-29.3 | 24.2-29.4 |
| Diabetes | 205 (25.5) | 215 (26.8) |
| Hypertension | 605 (75.2) | 612 (76.3) |
| Hyperlipidemia | 399 (49.6) | 381 (47.5) |
| Current cigarette use | 169 (21.0) | 167 (20.8) |
| Creatinine clearance, ml/min† | | |
| Median | 66.0 | 66.0 |
| Interquartile range | 47.9-88.6 | 46.1-90.8 |
| Patients with creatinine clearance <60 ml/min† | 327 (41.7) | 317 (41.2) |
| Patients with creatinine clearance <30 ml/min† | 66 (8.4) | 64 (8.3) |
| Patients on dialysis | 12 (1.5) | 21 (2.6) |
| Previous MI | 190 (23.6) | 194 (24.2) |
| Previous percutaneous coronary intervention | 149 (18.5) | 155 (19.3) |
| Previous coronary bypass surgery | 59 (7.3) | 54 (6.7) |
| Previous stroke or transient ischemic attack | 53 (6.6) | 51 (6.4) |
| Chronic obstructive pulmonary disease | 65 (8.1) | 55 (6.9) |
| Peripheral arterial disease | 141 (17.5) | 117 (14.6) |
| Left ventricular ejection fraction‡ | | |
| Median | 50.0 | 50.0 |
| Interquartile range | 40-55 | 40-56 |
| Clinical presentation | | |
| Stable angina pectoris | 295 (36.7) | 295 (36.8) |
| Acute coronary syndrome | 509 (63.3) | 507 (63.2) |
| Unstable angina | 131 (16.3) | 139 (17.3) |
| Non-ST-segment elevation MI | 226 (28.1) | 215 (26.8) |
| ST-segment elevation MI | 152 (18.9) | 153 (19.1) |
| Angiographic features | | |
| Single-vessel disease | 313 (38.9) | 332 (41.4) |
| Double-vessel disease | 285 (35.4) | 266 (33.2) |
| Triple-vessel disease | 206 (25.6) | 204 (25.4) |
| Inclusion criteria | | |
| High bleeding risk | 404 (50.2) | 424 (52.9) |
| High thrombosis risk | 145 (18.0) | 140 (17.5) |
| Low restenosis risk | | |
| Stable coronary artery disease presentation | 167 (20.8) | 170 (21.2) |
| Unstable coronary artery disease presentation | 301 (37.4) | 303 (37.8) |

Values are mean ± SD or n (%), unless otherwise indicated. *There were no significant between-group differences. †Available in 784 patients (97.5%) in the BMS group and 769 patients (95.9%) in the ZES group. ‡Available in 748 patients (93%) in the BMS group and 742 patients (93%) in the ZES group.
BMS = bare-metal stent(s); MI = myocardial infarction; ZES = zotarolimus-eluting stent(s).

using STATA version 11.1 (Stata Corp., College Station, Texas).

RESULTS

From June 2011 to September 2012, 5,288 patients were screened and 1,606 were finally randomized

(Online Figure 1). The groups were well balanced with regard to baseline clinical and angiographic characteristics (Tables 1 and 2).

The median age was 74 years; approximately one-quarter of the patient population had a history of diabetes or previous MI, and >40% of patients had impaired kidney function. Nearly two-thirds of patients presented with acute coronary syndromes (acute ST-segment elevation MI in 20%), and more than one-half had multivessel disease. One-third of patients received treatment for >1 lesion, and approximately 1 patient in every 4 underwent multivessel intervention. At least 1 complex lesion was treated in approximately 75% of the patients (Table 2).

CHARACTERIZATION OF THE INCLUDED PATIENT POPULATION. Figure 1A shows the distribution of the inclusion criteria in the recruited patient population. Approximately one-half of the patients (n = 828) entered the study due to high bleeding risk criteria, dictated by age 80 years or older in 425 (26.5%) patients and/or need for oral anticoagulation in 311 (19.4%) patients. Other high bleeding risk criteria included the following: ongoing, recent (within 12 months), or previous bleeding events requiring medical attention or hospitalization in 116 (7.2%) patients; presence of comorbidities determining an increased bleeding risk in 54 (3.4%) patients; known anemia in 68 (4.2%) patients; and need for prolonged treatment with steroids or nonsteroidal anti-inflammatory drugs in 25 (1.6%) patients. A high thrombotic risk was detected in 285 (17.7%) patients on the basis of the following: planned cardiac or noncardiac surgery in 117 (7.3%) patients; intolerance to aspirin (n = 73) or any P2Y₁₂ inhibitor (n = 1) in 74 (4.6%) patients; and cancer in 84 (5.2%) patients.

DUAL ANTIPLATELET THERAPY. DAPT was used in 1,532 (95.4%) patients, aspirin and clopidogrel in 1,481 patients (96.7%), and aspirin and prasugrel (n = 49) or ticagrelor (n = 2) in the remaining 51 (3.3%) patients. Figure 1B shows the cumulative frequency of DAPT duration from randomization to the first planned permanent discontinuation in the 2 study groups. The median duration of DAPT, 32 days (IQR: 30 to 180 days), did not differ between groups (33 days [IQR: 30 to 180 days] for BMS vs. 31 days [IQR: 30 to 180 days] for ZES groups; p = 0.69). Overall, 1,077 (67%) patients (533 [66.3%] in the BMS group and 544 [67.8%] in the ZES group) qualified for a 1-month DAPT regimen or a single antiplatelet regimen on the basis of inclusion criteria; the median duration of DAPT in these patients was 31 days (IQR: 30 to 81 days) in the BMS group versus 30 days (IQR: 30 to 48 days) (p = 0.89) in the ZES group. Reasons for prolonging

TABLE 2 Procedural Results and Use of Medications During the Trial*

| | BMS (n = 804) | ZES (n = 802) |
|---|------------------|------------------|
| No. of treated lesions | 1,153 | 1,172 |
| Mean ± SD | 1.43 ± 0.72 | 1.46 ± 0.75 |
| Median | 1 | 1 |
| Interquartile range | 1-2 | 1-2 |
| Range | 1-6 | 1-6 |
| ≥2 treated lesions | 272 (33.8) | 276 (34.4) |
| Multivessel intervention | 229 (25.6) | 246 (27.8) |
| LAD treated | 411 (51.1) | 421 (52.5) |
| CFX treated | 278 (34.6) | 263 (32.8) |
| RCA treated | 317 (39.4) | 335 (41.8) |
| LMCA treated | 36 (4.5) | 39 (4.9) |
| SVG treated | 12 (1.5) | 9 (1.1) |
| At least 1 complex (type B2 or C) lesion† | 590 (73.4) | 585 (72.9) |
| Total ACC/AHA score‡ | | |
| Mean ± SD | 6.82 ± 4.2 | 6.67 ± 4.2 |
| Median | 6 | 6 |
| Interquartile range | 4-10 | 3-9 |
| Number of stents implanted | | |
| Mean ± SD | 1.69 ± 1.10 | 1.70 ± 1.11 |
| Median | 1 | 2 |
| Interquartile range | 1-2 | 1-2 |
| Range | 0-9 | 0-7 |
| Length of stent, mm | | |
| Median | 26 | 30 |
| Interquartile range | 18-45 | 18-47 |
| Range | 0-176 | 0-144 |
| Mean stent diameter, mm | | |
| Median | 3 | 3 |
| Interquartile range | 2.80-3.50 | 2.83-3.50 |
| Patients receiving ≥2 stents | 199 (24.8) | 201 (25.1) |
| Patients receiving ≥3 stents | 71 (8.8) | 93 (11.6) |
| Patients with overlapping stents | 187 (23.3) | 193 (24.1) |

Continued in the next column

TABLE 2 Continued

| | BMS (n = 804) | ZES (n = 802) |
|---------------------------------------|------------------|------------------|
| Quantitative coronary analysis | | |
| Lesion length, mm | 16.30 ± 10.48 | 16.58 ± 10.74 |
| Reference vessel diameter, before, mm | 2.85 ± 0.88 | 2.86 ± 0.76 |
| Minimal lumen diameter, before, mm | 1.07 ± 0.56 | 1.08 ± 0.54 |
| Stenosis, before, % | 67 ± 16 | 68 ± 16 |
| Reference vessel diameter, after, mm | 2.90 ± 0.50 | 2.95 ± 0.51 |
| Minimal lumen diameter, after, mm | 2.70 ± 0.50 | 2.73 ± 0.52 |
| Stenosis, after, % | 6.9 ± 7.3 | 7.01 ± 7.39 |
| Drug therapy at discharge | | |
| Aspirin | 745 (92.7) | 743 (92.6) |
| P2Y ₁₂ inhibitor | 781 (97.1) | 784 (97.8) |
| ACE inhibitors | 517 (64.3) | 514 (64.1) |
| Beta-blockers | 604 (75.1) | 588 (73.3) |
| Statins | 695 (86.4) | 684 (85.3) |
| Oral anticoagulant agent | 101 (12.6) | 107 (13.3) |
| Proton pump inhibitors | 522 (65.1) | 520 (65.1) |
| Drug therapy at 30 days | | |
| Aspirin | 739 (91.9) | 732 (91.3) |
| P2Y ₁₂ inhibitor | 753 (93.7) | 753 (93.9) |
| ACE inhibitors | 489 (60.8) | 506 (63.1) |
| Beta-blockers | 587 (73.0) | 590 (73.6) |
| Statins | 670 (83.3) | 663 (83.9) |
| Oral anticoagulant agent | 108 (13.4) | 105 (13.1) |
| Proton pump inhibitors | 506 (62.9) | 506 (63.1) |

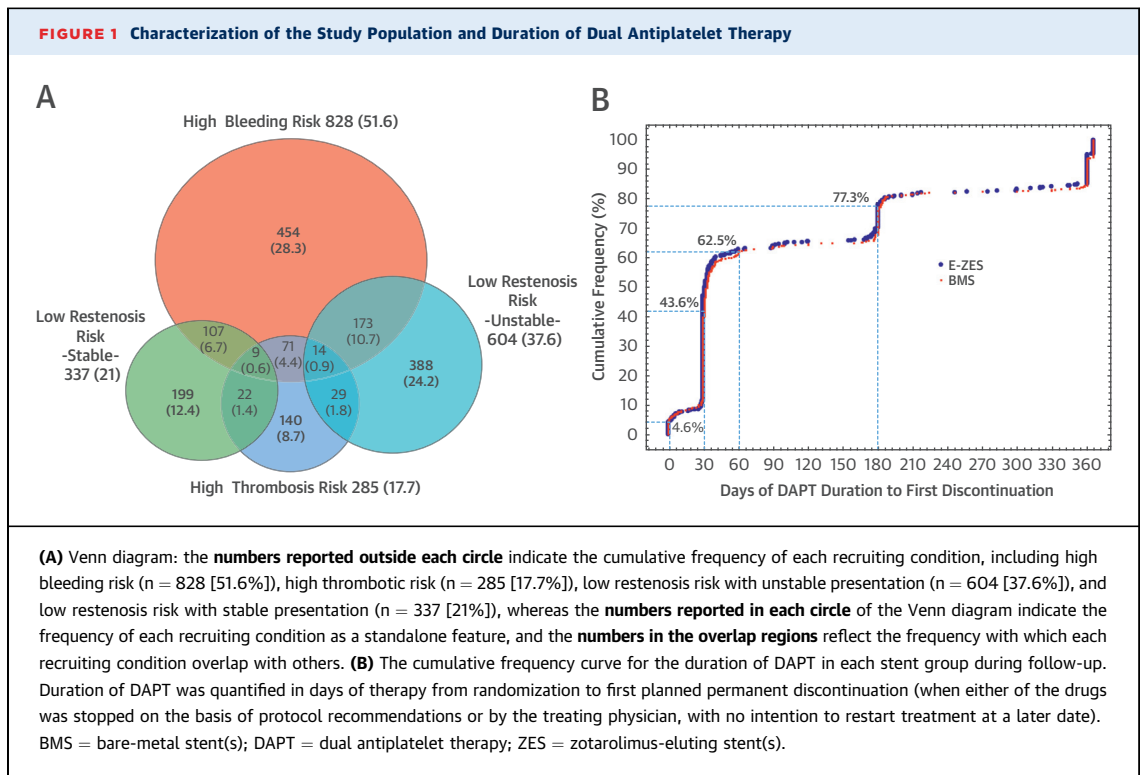
Values are mean ± SD or n (%), unless otherwise indicated. *There were no significant between-group differences. †Calculated in 802 patients in the BMS arm and in 800 patients in the ZES arm; ACC/AHA scores were missing in 6 patients. ‡As described in Ellis et al. (30), type A stenoses were coded 1 point; type B1 stenoses, 2 points; type B2 stenoses, 3 points; and type C stenoses, 4 points. ACC/AHA = American College of Cardiology/American Heart Association; ACE = angiotensin-converting enzyme; CFX = circumflex artery; LAD = left anterior descending artery; LMCA = left main coronary artery; RCA = right coronary artery; SVG = saphenous vein graft; other abbreviations as in Table 1.

DAPT beyond 30 days in this patient population included planned staged procedures or new coronary lesions that required intervention.

There were 74 (4.6%) patients with aspirin or P2Y₁₂ inhibitor intolerance who did not receive DAPT; 499 (62.1%) patients in the BMS group and 505 (63.0%) patients in the ZES group received DAPT for <2 months (p = 0.72). DAPT was restarted during follow-up in 42 (5.2%) patients in the BMS group and in 27 (3.4%, p = 0.084) patients in the ZES group, mostly due to new coronary events and/or new unplanned coronary intervention. As a result, the cumulative DAPT duration trended slightly longer in the BMS group (median [IQR]: 34 days [30 to 184 days] vs. 33 days [30 to 180 days] in the ZES group, p = 0.063) (Online Figure 2).

CLINICAL OUTCOMES. During follow-up, 140 patients (17.5%) in the ZES group and 178 patients (22.1%)

in the BMS arm reached the primary endpoint (hazard ratio [HR]: 0.76; 95% confidence interval [CI]: 0.61 to 0.95; p = 0.011), supporting the primary hypothesis of superior efficacy (Central Illustration A, Table 3). The difference between groups reflected a significant reduction in MI (2.9% in the ZES group vs. 8.1% in the BMS group; HR: 0.35; 95% CI: 0.22 to 0.56; p < 0.001) (Central Illustration B) and a significant decrease in TVR in the ZES group (5.9% in the ZES group vs. 10.7% in the BMS group; HR: 0.53; 95% CI: 0.37 to 0.75; p = 0.001) (Central Illustration C, Table 3). Although all-cause and cardiovascular mortality did not differ significantly in the ZES cohort (11.1% and 7.6%, respectively) and the BMS cohort (11.4%; HR: 0.97; 95% CI: 0.72 to 1.29; p = 0.83 and 8.3%; HR: 0.91; 95% CI: 0.64 to 1.29; p = 0.65, respectively) (Table 3), the composite of any death or nonfatal MI, as well as of cardiovascular death or



nonfatal MI were both significantly reduced in the ZES group (13.1% vs. 17.4%; HR: 0.73; 95% CI: 0.57 to 0.94; $p = 0.018$ and 9.7% vs. 14.6%; HR: 0.65; 95% CI: 0.49 to 0.87; $p = 0.004$, respectively).

The rate of definite stent thrombosis trended lower in the ZES group (1.0% in the ZES group vs. 2.2% in the BMS group; HR: 0.44; 95% CI: 0.19 to 1.02; $p = 0.054$), whereas the composite of definite or probable thrombosis (2.0% vs. 4.1%; HR: 0.48; 95% CI: 0.27 to 0.88; $p = 0.019$) (Central Illustration, D) and definite, probable, or possible stent thrombosis (4.7% vs. 7.2%; HR: 0.65; 95% CI: 0.43 to 0.97; $p = 0.045$) were both significantly reduced in the ZES group. Bleeding endpoints, reported in Table 3, did not differ between groups.

SUBGROUP ANALYSIS. As shown in Figure 2, when outcomes in terms of the primary endpoint of death from any cause, MI, or TVR, as well as for the secondary endpoint of death from any cause or MI were separately appraised across patients at high risk of bleeding or thrombosis or at low risk of restenosis, there was no signal of heterogeneity.

DISCUSSION

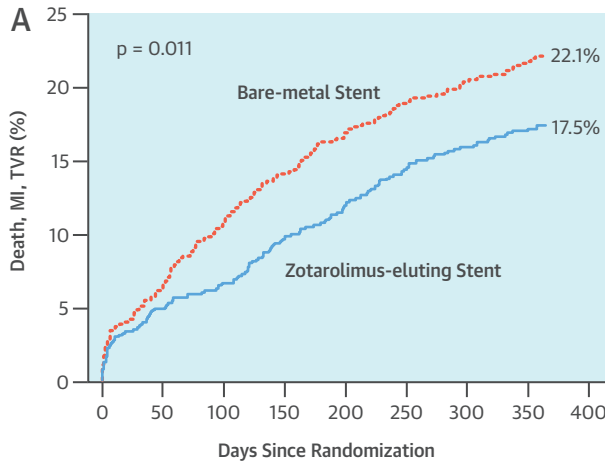
The ZEUS study focused on a unique patient population that was largely excluded from the pivotal

DES trials that led to regulatory approval. We studied patients with high bleeding risk, high thrombotic risk, or low restenosis risk. Furthermore, the duration of antiplatelet therapy specified in the protocol was based not on the type of stent implanted (DES vs. BMS), but on the patient's perceived risk profile.

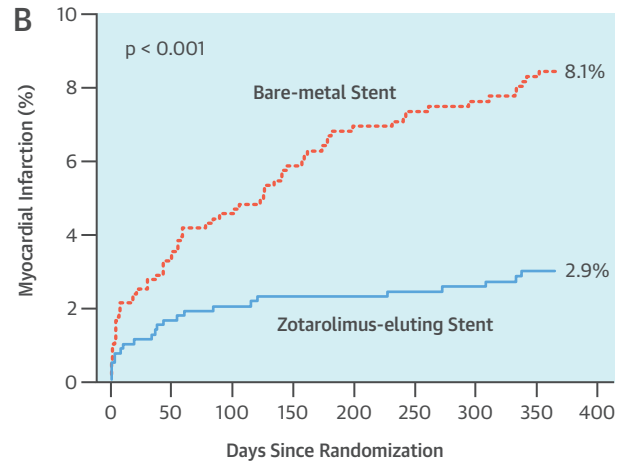
The advent of DES led to the recommendation that a more prolonged course of DAPT be mandated, compared with the shorter duration recommended for BMS (1,19). Hence, the effect of DES implantation has never been disentangled from that offered by a prolonged DAPT regimen.

The principal research question posed was whether the use of ZES compared with BMS, both with similar short courses of DAPT, would translate into a reduction of MACE at 1 year (Central Illustration). The primary hypothesis of superior efficacy of the ZES was confirmed and driven by a lower TVR rate and a lower rate of MI in the ZES group compared with the BMS group. Our study results confirmed the previously demonstrated benefit of lower TVR rates in more selected populations by showing an almost 50% relative and 5% absolute reduction of this endpoint in the ZES group compared with the BMS group. We also observed an unexpected reduction in the overall rates of MI and stent thrombosis that favored the use of

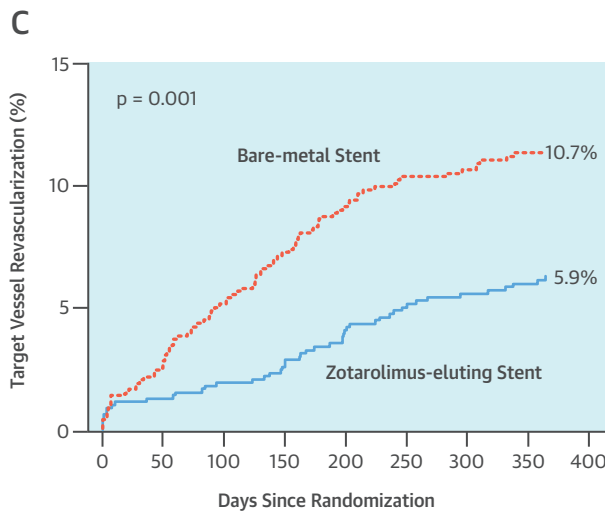
CENTRAL ILLUSTRATION Zotarolimus-Eluting Stent in Uncertain Drug-Eluting Stent Candidates: Kaplan-Meier Curves of Study Outcomes



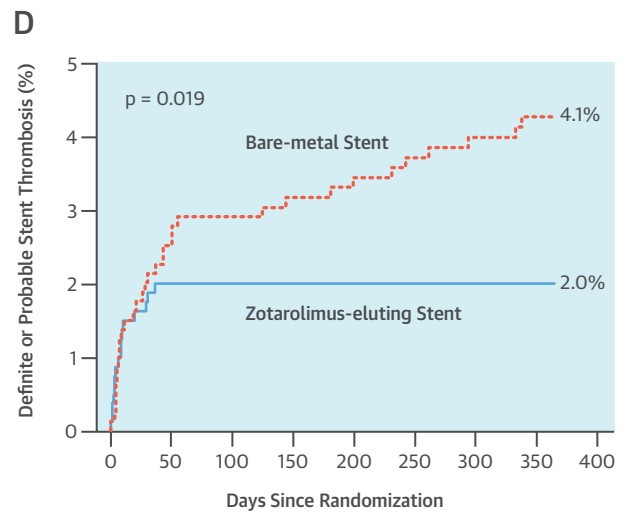
| No. at Risk | | 804 | 752 | 716 | 689 | 668 | 651 | 639 | 628 |
|-------------|--|-----|-----|-----|-----|-----|-----|-----|-----|
| BMS | | 804 | 752 | 716 | 689 | 668 | 651 | 639 | 628 |
| ZES | | 802 | 761 | 747 | 723 | 705 | 685 | 673 | 664 |



| No. at Risk | | 804 | 757 | 730 | 709 | 695 | 684 | 675 | 666 |
|-------------|--|-----|-----|-----|-----|-----|-----|-----|-----|
| BMS | | 804 | 757 | 730 | 709 | 695 | 684 | 675 | 666 |
| ZES | | 802 | 762 | 750 | 733 | 726 | 713 | 698 | 684 |



| No. at Risk | | 804 | 759 | 721 | 694 | 675 | 657 | 645 | 636 |
|-------------|--|-----|-----|-----|-----|-----|-----|-----|-----|
| BMS | | 804 | 759 | 721 | 694 | 675 | 657 | 645 | 636 |
| ZES | | 802 | 765 | 751 | 729 | 712 | 693 | 682 | 675 |



| No. at Risk | | 804 | 763 | 739 | 723 | 712 | 701 | 692 | 685 |
|-------------|--|-----|-----|-----|-----|-----|-----|-----|-----|
| BMS | | 804 | 763 | 739 | 723 | 712 | 701 | 692 | 685 |
| ZES | | 802 | 767 | 758 | 741 | 733 | 721 | 713 | 708 |

Valgimigli, M. et al. J Am Coll Cardiol. 2015; 65(8):805-15.

(A) Rates of events for the primary composite outcome (death, MI, or TVR) and the principal secondary outcomes, including **(B)** MI, **(C)** TVR, and **(D)** definite or probable stent thrombosis at 1 year are shown. BMS = bare-metal stent(s); MI = myocardial infarction; TVR = target vessel revascularization; ZES = zotarolimus-eluting stent(s).

ZES. The risk of MI was reduced in the ZES group by >60% on a relative basis and by 5% on an absolute basis. At post hoc analysis, rate of type I (spontaneous) and type IVb (stent thrombosis-related) MI were significantly reduced in the ZES arm, whereas other types of MI, including peri-procedural events, did not differ between the 2 groups. The composite of

definite or probable stent thrombosis was reduced by >50% in the ZES group, with an absolute difference in event rates of 2.1%. At sensitivity analysis, the benefit in terms of the study primary endpoint appeared consistent throughout the subgroups, including in those who (as per protocol) received an abbreviated 30-day DAPT regimen or a single

TABLE 3 Outcome Rates at 12 Months According to Treatment Group

| | BMS (n = 804) | ZES (n = 802) | Hazard Ratio (95%CI) | p Value |
|--|------------------|------------------|-------------------------|---------|
| Primary efficacy endpoint | | | | |
| Death from any cause, myocardial infarction or target vessel revascularization | 178 (22.1) | 140 (17.5) | 0.76 (0.61-0.95) | 0.011 |
| Secondary efficacy endpoints | | | | |
| Death from any cause or myocardial infarction | 140 (17.4) | 105 (13.1) | 0.73 (0.57-0.94) | 0.018 |
| Death from cardiovascular cause or myocardial infarction | 117 (14.6) | 78 (9.7) | 0.65 (0.49-0.87) | 0.004 |
| Death from any cause | 92 (11.4) | 89 (11.1) | 0.97 (0.72-1.29) | 0.83 |
| Death from cardiovascular cause | 67 (8.3) | 61 (7.6) | 0.91 (0.64-1.29) | 0.65 |
| Myocardial infarction | 65 (8.1) | 23 (2.9) | 0.35 (0.22-0.56) | <0.001 |
| Target vessel revascularization | 86 (10.7) | 47 (5.9) | 0.53 (0.37-0.75) | 0.001 |
| Target lesion revascularization | 84 (10.4) | 42 (5.2) | 0.48 (0.33-0.70) | <0.001 |
| Ischemic stroke | 12 (1.5) | 9 (1.1) | 0.75 (1.32-1.77) | 0.71 |
| Definite stent thrombosis* | 18 (2.2) | 8 (1.0) | 0.44 (0.19-1.02) | 0.054 |
| Probable stent thrombosis* | 15 (1.9) | 8 (1.0) | 0.53 (0.23-1.25) | 0.21 |
| Possible stent thrombosis* | 25 (3.1) | 22 (2.7) | 0.86 (0.49-1.53) | 0.60 |
| Definite or probable stent thrombosis* | 33 (4.1) | 16 (2.0) | 0.48 (0.27-0.88) | 0.019 |
| Definite, probable, or possible stent thrombosis* | 58 (7.2) | 38 (4.7) | 0.65 (0.43-0.97) | 0.045 |
| Safety endpoints | | | | |
| TIMI classification | 17 (2.1) | 14 (1.7) | | 0.72 |
| Major or minor | | | | |
| Major | 13 (1.6) | 7 (0.9) | | 0.26 |
| Minor | 4 (0.5) | 7 (0.9) | | 0.39 |
| Requiring medical attention | 35 (4.4) | 28 (3.5) | | 0.44 |
| BARC classification† | | | | |
| Type 5 or 3 | 25 (3.1) | 22 (2.7) | | 0.77 |
| Type 5, 3 or 2 | 53 (6.6) | 41 (5.1) | | 0.24 |
| Type 5 | 7 (0.9) | 4 (0.5) | | 0.55 |
| Type 5A | 4 (0.5) | 3 (0.4) | | >0.99 |
| Type 5B | 3 (0.4) | 1 (0.1) | | 0.63 |
| Type 4 | 0 | 0 | | ... |
| Type 3 | 18 (2.2) | 18 (2.2) | | >0.99 |
| Type 3A | 6 (0.7) | 5 (0.6) | | >0.99 |
| Type 3B | 10 (1.2) | 12 (1.5) | | 0.68 |
| Type 3C | 2 (0.2) | 1 (0.1) | | >0.99 |
| Type 2 | 28 (3.5) | 19 (2.4) | | 0.24 |

Values are n (%), unless indicated otherwise. *Stent thrombosis was defined according to Academic Research Consortium criteria. †Type 5 refers to fatal bleeding; Type 4 are coronary artery bypass-related bleedings; Type 3 bleedings are divided into: 3A, overt bleeding plus hemoglobin drop of 3 to <5 g/dL or any transfusion with overt bleeding; 3B, overt bleeding plus hemoglobin drop \geq 5 g/dL or cardiac tamponade or bleeding requiring surgical intervention for control (excluding dental/nasal/skin/hemorrhoid) or bleeding requiring intravenous inotropes; and 3C, intracranial hemorrhage or intraocular bleed compromising vision. Type 2 bleedings are any overt, actionable sign of hemorrhage that does not fit the criteria for Types 3, 4, or 5, but does meet at least 1 of the following criteria: 1) requiring nonsurgical medical intervention by a health care professional; 2) leading to hospitalization or increased level of care; or 3) prompting evaluation.
BARC = Bleeding Academic Research Consortium; TIMI = Thrombolysis In Myocardial Infarction; other abbreviations as in Table 1.

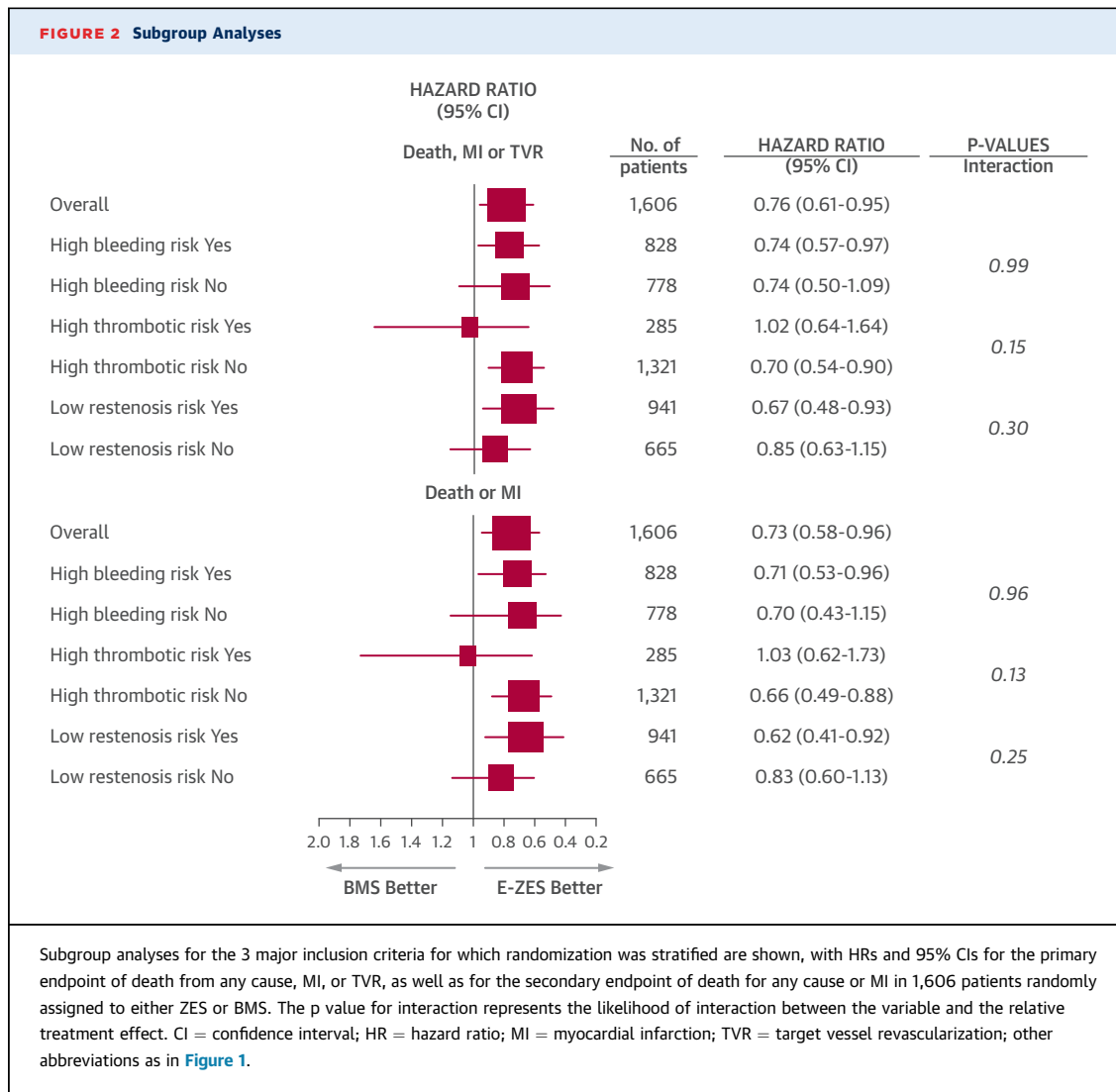
antiplatelet agent. Hence, our results suggest, for the first time, that ZES implantation followed by a personalized duration of DAPT, including a 30-day course of DAPT, is a novel and attractive strategy to reduce rates of MACE without increasing the risk of bleeding. The cumulative duration of DAPT trended

longer in the BMS group, driven by the higher number of patients in this group who experienced a new MI and/or reintervention in the target vessel during follow-up. Although bleeding events did not differ between the 2 study groups at 1 year, further follow-up is needed to ascertain the long-term clinical implications of these findings, specifically the effect on cumulative bleeding endpoints of long-term DAPT duration in the BMS group and in the subgroup of patients (numerically almost 2-fold more than in the ZES group) who required reintervention for in-stent restenosis.

Observational registry (15,20) data and 3 independent randomized controlled trials (21-24) have provided reassurance on the safety of reducing DAPT duration to 6 months, or even 3 months, after ZES implantation. Moreover, long-term results of the PROTECT (Randomized Study Comparing Endeavor With Cypher Stents) study suggested that adherence to DAPT modifies the outcome of stent thrombosis to a greater extent after sirolimus-eluting stent deployment than after ZES deployment, which is most likely due to differential healing characteristics (25). These findings reinforce the concept that DAPT use should be taken into consideration when interpreting the incidence of stent thrombosis and ischemic outcomes in studies that evaluate different stent platforms (25). The results of the ZEUS study further extend these findings by demonstrating that a very short (30-day) course of therapy in the ZES group did not pose a significant risk, whereas it achieved superior clinical efficacy.

The ZES is a unique second-generation device, in that it is completely hydrophilic polymer-based, and has a specific fast-release drug profile. Although the rapid-release profile (<2 weeks) results in less powerful inhibition of intimal hyperplasia (4), it leads to more rapid and complete stent strut coverage compared with other DES, suggesting that it might be feasible to shorten DAPT duration while maintaining superior efficacy compared with BMS (11,15,26). The thrombogenicity of BMS has long been recognized (27).

The polymer coating in the ZES is hydrophilic and highly biocompatible, and potentially serves as a barrier to diminish the thrombogenic potential of the metal stent struts (11). Multiple studies comparing new-generation DES versus BMS have observed a lower stent thrombosis and/or target vessel-related MI risk after DES (5,28,29). The interplay between the lower thrombogenicity of the device and the ability to reduce late loss-related coronary events has been formulated as a putative explanation for



these findings. However, all these studies have systematically mandated a prolonged (and frequently much longer) DAPT regimen for DES patients compared with BMS patients (4,28,29). Hence, these studies (unlike ours) failed to disentangle the effects of the device from those of the concomitant antiplatelet therapy.

STUDY LIMITATIONS. Our study had several limitations. It was not powered to assess the effect of ZES implantation with tailored duration of DAPT on purely stent-driven endpoints, such as definite or probable stent thrombosis. Nevertheless, our observation of a lower risk of stent thrombosis in the ZES arm was reassuring. This study had a single-blind design, and no specific safeguards were adopted to ensure that patients and treating physicians

remained unaware of treatment allocation beyond formal recommendations in the protocol. Thus, our study should be regarded as an open-label study with evident limitations.

Because of the unique properties of the ZES, our results should not be extrapolated to newer generation DES coated with the same or other anti-proliferative agents and diverse polymers.

Because the ZES has been associated with a lower efficacy in preventing TVR compared with other more potent first- or second-generation DES (4), it remains unclear if other DES may offer similar advantages, especially in patients at high risk of bleeding or thrombosis.

Further research is needed to ascertain if the tailored DAPT regimen tested in our study can be safely implemented in patients who receive other

DES. Longer follow-up is needed to assess the durability of our study results over time.

CONCLUSIONS

The ZEUS study showed that a treatment strategy consisting of ZES implantation followed by a personalized course of DAPT, including a 30-day course of therapy, resulted in a lower risk of MACE compared with BMS in patients at high risk of bleeding or thrombosis or at low risk of restenosis.

REPRINT REQUESTS AND CORRESPONDENCE: Dr. Marco Valgimigli, Thoraxcenter, Ba 587, Erasmus Medical Center, Rotterdam, the Netherlands. E-mail: m.valgimigli@erasmusmc.nl.

PERSPECTIVES

COMPETENCY IN MEDICAL KNOWLEDGE: Patients with contraindications to DES exhibited better outcomes when treated with ZES followed by a relatively short course of DAPT compared with BMS, as assessed in terms of survival and freedom from MI or TVR.

TRANSLATIONAL OUTLOOK: Further studies are needed to determine whether other types of DES offer similar advantages over BMS when DAPT is adjusted according to individual patient characteristics rather than stent type.

REFERENCES

- Serruys PW, Kutryk MJ, Ong AT. Coronary-artery stents. *N Engl J Med* 2006;354:483-95.
- Stone GW, Ellis SG, Cox DA, et al., for the TAXUS-IV Investigators. A polymer-based, paclitaxel-eluting stent in patients with coronary artery disease. *N Engl J Med* 2004;350:221-31.
- Valgimigli M, Campo G, Percoco G, et al., for the Multicentre Evaluation of Single High-Dose Bolus Tirofiban vs Abciximab With Sirolimus-Eluting Stent or Bare Metal Stent in Acute Myocardial Infarction Study (MULTISTRATEGY) Investigators. Comparison of angioplasty with infusion of tirofiban or abciximab and with implantation of sirolimus-eluting or uncoated stents for acute myocardial infarction: the MULTISTRATEGY randomized trial. *JAMA* 2008;299:1788-99.
- Valgimigli M, Tebaldi M, Borghesi M, et al., for the PRODIGY Investigators. Two-year outcomes after first- or second-generation drug-eluting or bare-metal stent implantation in all-comer patients undergoing percutaneous coronary intervention: a pre-specified analysis from the PRODIGY study (PROlonging Dual Antiplatelet Treatment After Grading stent-induced Intimal hyperplasia studyY). *J Am Coll Cardiol Intv* 2014;7:20-8.
- Valgimigli M, Campo G, Gambetti S, et al., for the MULTICENTRE evaluation of Single high-dose bolus Tirofiban versus Abciximab with sirolimus eluting stEnt or Bare Metal Stent in Acute Myocardial Infarction studyY Investigators. Three-year follow-up of the MULTICENTRE evaluation of Single high-dose Bolus Tirofiban versus Abciximab with Sirolimus-eluting STent or Bare-Metal Stent in Acute Myocardial Infarction StudyY (MULTISTRATEGY). *Int J Cardiol* 2013;165:134-41.
- Kalesan B, Pilgrim T, Heinemann K, et al. Comparison of drug-eluting stents with bare metal stents in patients with ST-segment elevation myocardial infarction. *Eur Heart J* 2012;33:977-87.
- Pfisterer M, Brunner-La Rocca HP, Buser PT, et al., for the BASKET-LATE Investigators. Late clinical events after clopidogrel discontinuation may limit the benefit of drug-eluting stents: an observational study of drug-eluting versus bare-metal stents. *J Am Coll Cardiol* 2006;48:2584-91.
- Wijns W, Kolh P, Danchin N, et al. Guidelines on myocardial revascularization: The Task Force on Myocardial Revascularization of the European Society of Cardiology (ESC) and the European Association for Cardio-Thoracic Surgery (EACTS). *Eur Heart J* 2010;31:2501-55.
- King SB 3rd, Smith SC Jr., Hirshfeld JW Jr., et al. 2007 focused update of the ACC/AHA/SCAI 2005 guideline update for percutaneous coronary intervention: a report of the American College of Cardiology/American Heart Association Task Force on Practice guidelines. *J Am Coll Cardiol* 2008;51:172-209.
- Task Force on the management of ST-segment elevation acute myocardial infarction of the European Society of Cardiology (ESC), Steg PG, James SK, et al. ESC guidelines for the management of acute myocardial infarction in patients presenting with ST-segment elevation. *Eur Heart J* 2012;33:2569-619.
- Burke SE, Kuntz RE, Schwartz LB. Zotarolimus (ABT-578) eluting stents. *Adv Drug Deliv Rev* 2006;58:437-46.
- Hayward JA, Chapman D. Biomembrane surfaces as models for polymer design: the potential for haemocompatibility. *Biomaterials* 1984;5:135-42.
- Nishinari M, Shimohama T, Tojo T, et al. Two-week interval optical coherence tomography: imaging evidence on neointimal coverage completion after implantation of the Endeavor zotarolimus-eluting stent. *Catheter Cardiovasc Interv* 2013;82:E871-8.
- Li S, Wang Y, Gai L, et al. Evaluation of neointimal coverage and apposition with various drug-eluting stents over 12 months after implantation by optical coherence tomography. *Int J Cardiol* 2013;162:166-71.
- Kandzari DE, Barker CS, Leon MB, et al. Dual antiplatelet therapy duration and clinical outcomes following treatment with zotarolimus-eluting stents. *J Am Coll Cardiol Intv* 2011;4:1119-28.
- Valgimigli M, Patialiakas A, Thury A, et al. Randomized comparison of Zotarolimus-Eluting Endeavor Sprint versus bare-metal stent implantation in uncertain drug-eluting stent candidates: rationale, design, and characterization of the patient population for the Zotarolimus-eluting Endeavor Sprint stent in uncertain DES candidates study. *Am Heart J* 2013;166:831-8.
- Brunner-La Rocca HP, Kaiser C, Pfisterer M, BASKET Investigators. Targeted stent use in clinical practice based on evidence from the Basel Stent Cost Effectiveness Trial (BASKET). *Eur Heart J* 2007;28:719-25.
- Cutlip DE, Windecker S, Mehran R, et al., for the Academic Research Consortium. Clinical end points in coronary stent trials: a case for standardized definitions. *Circulation* 2007;115:2344-51.
- Stefanini GG, Holmes DR Jr. Drug-eluting coronary-artery stents. *N Engl J Med* 2013;368:254-65.
- Wada T, Nakahama M, Toda H, et al. Dual antiplatelet therapy can be discontinued at three months after implantation of zotarolimus-eluting stent in patients with coronary artery disease. *ISRN Cardiol* 2013;2013:518968.
- Valgimigli M, Borghesi M, Tebaldi M, et al., for the PROlonging Dual antiplatelet treatment after Grading stent-induced Intimal hyperplasia studyY Investigators. Should duration of dual antiplatelet therapy depend on the type and/or potency of implanted stent? A pre-specified analysis from the PROlonging Dual antiplatelet treatment after Grading stent-induced Intimal hyperplasia studyY (PRODIGY). *Eur Heart J* 2013;34:909-19.
- Valgimigli M, Campo G, Monti M, et al., for the Prolonging Dual Antiplatelet Treatment After Grading Stent-Induced Intimal Hyperplasia Study

(PRODIGY) Investigators. Short- versus long-term duration of dual-antiplatelet therapy after coronary stenting: a randomized multicenter trial. *Circulation* 2012;125:2015-26.

23. Feres F, Costa RA, Abizaid A, et al., for the OPTIMIZE Trial Investigators. Three vs twelve months of dual antiplatelet therapy after zotarolimus-eluting stents: the OPTIMIZE randomized trial. *JAMA* 2013;310:2510-22.

24. Kim BK, Hong MK, Shin DH, et al., for the RESET Investigators. A new strategy for discontinuation of dual antiplatelet therapy: the RESET Trial (REal Safety and Efficacy of 3-month dual antiplatelet Therapy following Endeavor zotarolimus-eluting stent implantation). *J Am Coll Cardiol* 2012;60:1340-8.

25. Camenzind E, Boersma E, Wijns W, et al., for the PROTECT Steering Committee and Investigators. Modifying effect of dual antiplatelet therapy on incidence of stent thrombosis according to

implanted drug-eluting stent type. *Eur Heart J* 2014;35:1932-48.

26. Fan C, Kim JS, Lee JM, et al. Different vascular healing patterns with various drug-eluting stents in primary percutaneous coronary intervention for ST-segment elevation myocardial infarction: optical coherence tomographic findings. *Am J Cardiol* 2010;105:972-6.

27. Rogers C, Edelman ER. Endovascular stent design dictates experimental restenosis and thrombosis. *Circulation* 1995;91:2995-3001.

28. Sabate M, Cequier A, Iniguez A, et al. Everolimus-eluting stent versus bare-metal stent in ST-segment elevation myocardial infarction (EXAMINATION): 1 year results of a randomised controlled trial. *Lancet* 2012;380:1482-90.

29. Raber L, Kelbaek H, Ostojic M, et al., for the COMFORTABLE AMI Trial Investigators. Effect of biolimus-eluting stents with biodegradable polymer vs bare-metal stents on cardiovascular events

among patients with acute myocardial infarction: the COMFORTABLE AMI randomized trial. *JAMA* 2012;308:777-87.

30. Ellis SG, Vandormael MG, Cowley MJ, et al. Coronary morphologic and clinical determinants of procedural outcome with angioplasty for multivessel coronary disease. Implications for patient selection. Multivessel Angioplasty Prognosis Study Group. *Circulation* 1990;82:1193-202.

KEY WORDS drug-eluting stent(s), dual-antiplatelet therapy, high bleeding risk, high thrombotic risk, zotarolimus-eluting stent(s)

APPENDIX For a list of investigators and the patient selection criteria and duration of dual antiplatelet therapy and supplemental figures, please see the online version of this article.