

Constraining the Kilonova Rate with Zwicky Transient Facility Searches Independent of Gravitational Wave and Short Gamma-ray Burst Triggers

IGOR ANDREONI,¹ ERIK C. KOOL,² ANA SAGUÉS CARRACEDO,³ MANSI M. KASLIWAL,¹ MATTIA BULLA,⁴
TOMÁS AHUMADA,⁵ MICHAEL W. COUGHLIN,⁶ SHREYA ANAND,¹ JESPER SOLLERMAN,² ARIEL GOOBAR,³
DAVID L. KAPLAN,⁷ TEGAN T. LOVERIDGE,¹ VIRAJ KARAMBELKAR,¹ JEFF COOKE,^{8,9} ASHOT BAGDASARYAN,¹
ERIC C. BELLM,¹⁰ S. BRADLEY CENKO,^{11,12} DAVID O. COOK,¹³ KISHALAY DE,¹ RICHARD DEKANY,¹⁴
ALEXANDRE DELACROIX,¹⁴ ANDREW DRAKE,¹ DMITRY A. DUEV,¹ CHRISTOFFER FREMLING,¹ V. ZACH GOLKHOV,^{10,15}
MATTHEW J. GRAHAM,¹ DAVID HALE,¹⁴ S. R. KULKARNI,¹ THOMAS KUPFER,¹⁶ RUSS R. LAHER,¹³ ASHISH A. MAHABAL,¹
FRANK J. MASCI,¹³ BEN RUSHOLME,¹³ ROGER M. SMITH,¹⁴ ANASTASIOS TZANIDAKIS,¹ ANGELA VAN SISTINE,⁷ AND
YUHAN YAO¹

¹*Division of Physics, Mathematics and Astronomy, California Institute of Technology, Pasadena, CA 91125, USA*

²*The Oskar Klein Centre, Department of Astronomy, Stockholm University, AlbaNova, SE-106 91 Stockholm, Sweden*

³*The Oskar Klein Centre, Department of Physics, Stockholm University, AlbaNova, SE-106 91 Stockholm, Sweden*

⁴*Nordita, KTH Royal Institute of Technology and Stockholm University, Roslagstullsbacken 23, SE-106 91 Stockholm, Sweden*

⁵*Department of Astronomy, University of Maryland, College Park, MD 20742, USA*

⁶*School of Physics and Astronomy, University of Minnesota, Minneapolis, Minnesota 55455, USA*

⁷*Center for Gravitation, Cosmology, and Astrophysics, Department of Physics, University of Wisconsin-Milwaukee, P.O. Box 413, Milwaukee, WI 53201, USA*

⁸*Australian Research Council Centre of Excellence for Gravitational Wave Discovery (OzGrav), Swinburne University of Technology, Hawthorn, VIC, 3122, Australia*

⁹*Centre for Astrophysics and Supercomputing, Swinburne University of Technology, Hawthorn, VIC, 3122, Australia*

¹⁰*DIRAC Institute, Department of Astronomy, University of Washington, 3910 15th Avenue NE, Seattle, WA 98195, USA*

¹¹*Astrophysics Science Division, NASA Goddard Space Flight Center, Mail Code 661, Greenbelt, MD 20771, USA*

¹²*Joint Space-Science Institute, University of Maryland, College Park, MD 20742, USA*

¹³*IPAC, California Institute of Technology, 1200 E. California Blvd, Pasadena, CA 91125, USA*

¹⁴*Caltech Optical Observatories, California Institute of Technology, Pasadena, CA 91125, USA*

¹⁵*The eScience Institute, University of Washington, Seattle, WA 98195, USA*

¹⁶*Kavli Institute for Theoretical Physics, University of California, Santa Barbara, CA 93106, USA*

ABSTRACT

The first binary neutron star merger, GW170817, was accompanied by a radioactivity-powered optical/infrared transient called a kilonova. To date, no compelling kilonova has been found in all-sky optical surveys, independently of short gamma-ray burst and gravitational-wave triggers. In this work, we searched the first 23 months of the Zwicky Transient Facility (ZTF) data stream for candidate kilonovae in the form of rapidly-evolving transients. We combined ZTF alert queries with forced point-spread-function photometry and nightly flux stacking to increase our sensitivity to faint and fast transients. Automatic queries yielded $> 11,200$ candidates, 24 of which passed quality checks and selection criteria based on a grid of kilonova models tailored for both binary neutron star and neutron star–black hole mergers. None of the candidates in our sample was deemed a possible kilonova after thorough vetting. The sources that passed our selection criteria are dominated by Galactic cataclysmic variables. We identified two fast transients at high Galactic latitude, one of which is the confirmed afterglow of long-duration GRB 190106A, the other is a possible cosmological afterglow. Using a survey simulation code, we constrained the kilonova rate for a range of models including top-hat, linearly decaying light curves, and synthetic light curves obtained with radiative transfer simulations. For prototypical GW170817-like kilonovae, we constrain the rate to be $R < 1775 \text{ Gpc}^{-3} \text{ yr}^{-1}$ (95% confidence). By assuming a population of kilonovae with the same geometry and composition of

GW170817 observed under a uniform viewing angle distribution, we obtained a constraint on the rate of $R < 4029 \text{ Gpc}^{-3} \text{ yr}^{-1}$.

1. INTRODUCTION

The study of the dynamic sky took a twist when multi-messenger discoveries became reality with the discovery of astronomical transients associated with neutrinos (Hirata et al. 1987; IceCube Collaboration et al. 2018; Stein et al. 2020) or gravitational waves (GWs; Abbott et al. 2017d). The identification of an electromagnetic (EM) counterpart to the GW event GW170817 (Abbott et al. 2017d) spectacularly confirmed the predictions that short gamma-ray bursts (GRBs; e.g. Blinnikov et al. 1984; Paczynski 1986; Eichler et al. 1989; Narayan et al. 1992; Fong & Berger 2013) and fast optical/near-infrared transients called “kilonovae” or “macronovae” (KNe; e.g. Li & Paczyński 1998; Kulkarni 2005; Rosswog 2005; Metzger et al. 2010; Metzger & Berger 2012; Barnes & Kasen 2013; Tanaka & Hotokezaka 2013) can be generated by binary neutron star (BNS) or neutron star–black hole (NSBH) mergers (see also Foucart 2012; Hotokezaka et al. 2013). Launched by neutron star disruption, neutron-rich ejecta host rapid neutron capture (r-process) nucleosynthesis, leading to the production of heavy elements. The radioactive decay of such unstable heavy nuclei powers the optical/infrared KN. Recent reviews on EM emission from neutron star mergers can be found, for example, in Metzger (2019); Nakar (2019).

The observation of optical/infrared KNe is particularly valuable when it happens concurrently with the discovery of a compact binary merger in GWs. The nearby BNS merger GW170817 was confidently associated with the optical transient AT2017gfo (Coulter et al. 2017) and the multi-messenger discovery has led to hundreds of studies addressing, for example, astrophysics of energetic phenomena (e.g., Kasliwal et al. 2017; D’Avanzo et al. 2018; Margutti et al. 2018; Beniamini et al. 2019; Salafia & Giacomazzo 2020), fundamental physics (e.g., Abbott et al. 2019; Coughlin et al. 2019a), and cosmology (e.g., Abbott et al. 2017a; Hotokezaka et al. 2019). It is relevant for this work to note that even the optical/infrared photometric data alone carried evidence of heavy-element nucleosynthesis in the GW170817 merger ejecta (Andreoni et al. 2017; Arcavi et al. 2017; Chornock et al. 2017; Cowperthwaite et al. 2017; Díaz et al. 2017; Drout et al. 2017; Evans et al. 2017; Kasliwal et al. 2017; Pian et al. 2017; Smartt et al. 2017; Tanvir et al. 2017; Troja et al. 2017; Shappee et al. 2017; Utsumi et al. 2017; Valenti et al. 2017).

The discovery of more KNe in optical surveys would allow us to estimate the production of heavy elements during neutron star mergers and better constrain the neutron star merger rate (see §5), therefore providing

tools to tackle open questions such as whether neutron star mergers are “the site” or just “a site” for heavy element production in the Universe. This topic is discussed, for example, by Rosswog et al. (2018); Kasliwal et al. (2019); Siegel et al. (2019). The possibility of using KNe as standardizable candles for cosmology (without any GW information) is also an intriguing perspective (Coughlin et al. 2020) that can be tested when a significant population of KNe is unveiled.

Observationally, KNe can show an early blue component likely brighter towards polar angles for the first 2–3 days after merger, followed by a redder component generated from the tidal dynamical ejecta and post-merger ejecta (e.g., Cowperthwaite et al. 2017; Kasen et al. 2017; Kawaguchi et al. 2018; Bulla et al. 2019). Regardless of the viewing angle, KNe are expected to appear dimmer and fade more quickly relative most supernovae at optical wavelengths. Supernovae typically peak at absolute magnitudes between ~ -17 and ~ -19 and, in most cases, they fade at a rate slower than 0.3 mag day^{-1} . AT2017gfo faded at a rate $> 0.5 \text{ mag day}^{-1}$ in optical bands and it was measured to have an absolute magnitude of $M_r \sim -16$ shortly after peak. Such characteristics make it more difficult to discover KNe relative to supernovae, that are brighter at peak and remain luminous for months. Moreover, recent GW observations indicate a rate for BNS mergers of $250\text{--}2810 \text{ Gpc}^{-3} \text{ yr}^{-1}$ (Abbott et al. 2020), which suggests that at most few events per year are expected to occur at distances close enough for KNe to be detectable in 1-m class optical surveys. In comparison, the rate of unobscured supernovae in the nearby Universe is $\sim 28.7 \times 10^3 \text{ Gpc}^{-3} \text{ yr}^{-1}$ (Smartt et al. 2009).

Several KN candidates were found during the follow-up of short GRBs (Perley et al. 2009; Tanvir et al. 2013; Berger et al. 2013; Gao et al. 2015; Jin et al. 2015; Yang et al. 2015; Jin et al. 2016; Troja et al. 2018; Lamb et al. 2019; Jin et al. 2020) as optical/IR excesses on top of the GRB afterglow and one was found during the follow-up of GW170817/GRB170817A (e.g., Coulter et al. 2017). Although a marginal candidate was recently identified (McBrien et al. 2020), no confirmed KN was found during optical surveys independently of GW triggers, to date.

Searches in optical time-domain survey datasets are complementary to GW follow-up searches. The third Advanced LIGO/Virgo observing run (O3) took place entirely within the time frame in which data used in this work were taken and it was suspended without yielding any optical (or multi-wavelength) counterpart (Ackley

et al. 2020; Andreoni et al. 2019b; Coughlin et al. 2019b; Goldstein et al. 2019; Gomez et al. 2019; Hosseinzadeh et al. 2019; Lundquist et al. 2019; Andreoni et al. 2020a; Antier et al. 2020; Gompertz et al. 2020; Vieira et al. 2020; Watson et al. 2020). In addition, it is possible that neutron star mergers occurred in the nearby Universe during O3 and were missed by the GW detectors because of instrument downtime and their unisotropic antenna pattern.

Motivated by this, we use the Zwicky Transient Facility (ZTF; Bellm et al. 2019b; Graham et al. 2019) at Palomar Observatory, which surveys the northern sky primarily in g - and r -band (i -band being occasionally used for specific projects) with an instantaneous field of view of 47 deg^2 , a pixel scale of $1'' \text{ pixel}^{-1}$, and a typical limiting magnitude of $r \sim 20.5$ in 30-s exposure time, to search for serendipitous KNe. This work is based on 239,754 images acquired during the first 23 months of ZTF operations.

The paper is organized as follows: methods used to search the ZTF alert database, to perform photometry, and to select KN candidates are described in §2; the results of our searches are presented in §3; implications of our results for KN rates are discussed in §5. §6 completes the manuscript with a short summary and concluding remarks. A Planck Collaboration et al. (2016) cosmology is used throughout the paper.

2. METHODS

In this section, we describe the dataset that we searched for KNe, the data mining techniques that we adopted, and our novel scheme to vet candidates.

2.1. Dataset

ZTF conducts a public Survey of the Northern Sky for 40% of the time allocation. Public data are acquired as g , r filter pairs with a preferred cadence of 3 nights, with some fields in the Galactic plane or in *Transiting Exoplanet Survey Satellite* (*TESS*; Ricker et al. 2015) fields imaged with nightly cadence (for more information on ZTF goals and planning see Bellm et al. 2019a). The rest of the time allocation is divided between ZTF Partnership and Caltech surveys, usually observing a smaller sky area (including the Galactic plane) at higher cadence. Data from all programs were used in our analysis. Images are processed with the ZTF real-time reduction and image subtraction pipeline at the Infrared Processing & Analysis Center (Masci et al. 2019), using the ZOGY algorithm for the image subtraction (Zackay et al. 2016). Upon source detection, alert packets are generated and serialized in Apache Avro format, and finally distributed to community brokers (Patterson et al. 2019).

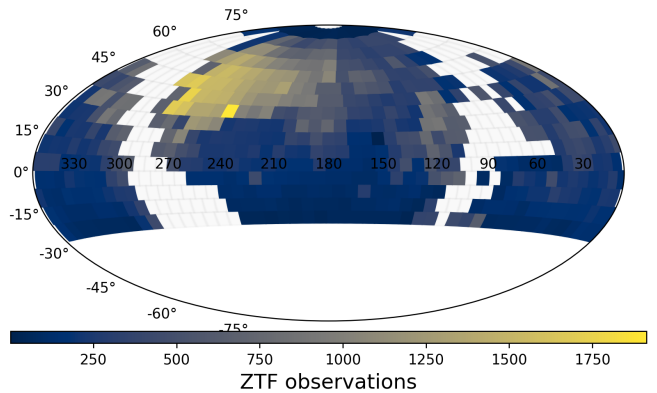


Figure 1. All-sky view of the ZTF fields searched in this work created with `ztfquery` (Rigault 2018), in Equatorial coordinates and “hammer” projection. ZTF fields were selected to minimize the Galactic foreground by setting a threshold of $E(B - V) < 0.3 \text{ mag}$ at their central coordinates (Planck Collaboration et al. 2014).

This work aims to discover extragalactic transients, so we limit the search for KNe to 514 fields (47 deg^2 each) with low Galactic extinction by requiring $E(B - V) < 0.3 \text{ mag}$ at the central coordinates for the field based on Planck Collaboration et al. (2014) dust maps. The central coordinates of ZTF fields belong to two fixed grids, where the secondary grid is shifted from the primary grid in order to cover the chip gaps. We only take fields in the well-sampled ZTF primary grid, given that the secondary grid has significantly fewer observations. The effective area that we probed extended across $\sim 24,150 \text{ deg}^2$ (Figure 1). The resulting dataset utilizes 239,754 images, 89,961 of which were acquired in g -band, 137,403 in r -band, and 12,390 in i -band.

2.2. Alert database query

The ZTF alert database was mined by querying the Kowalski¹ broker at Caltech (Duev et al. 2019) in `mongodb` and `Python`. ZTF alerts are issued when a source is detected with $\geq 5\sigma$ significance, however the number of detections reported within the Avro packets (`ndethist` key) takes into account past detections with a lower significance, ranging between $3 - 5\sigma$. When querying the database, we excluded those candidates that were:

- classified with a small real/bogus score of `rb` < 0.5 and deep learning scores of `braai` < 0.8 and `drb` < 0.8 , where available (Duev et al. 2019);
- located $< 10''$ from known Solar System objects;

¹ <https://github.com/dmitryduev/kowalski>

- located $< 15''$ from bright ($r < 15$) stars that often produce artificial spikes and ghost sources in their surroundings;
- detected as “negative” flux in the image subtraction, the source having become fainter in the science image than in the reference image;
- coincident within $2''$ radius with likely stellar sources (`sgscore` > 0.5) found in Pan-STARRS images based on the star/galaxy separation algorithm developed by Miller et al. (2017).

We organized the experiment in two parts in order to conduct a thorough analysis on a large but manageable dataset:

1. an *all-sky* search in the selected fields, requiring at least 3 detections in the alerts and at most 12 days time lag between the first and last detection. Such a time lag would be sufficient to observe AT2017gfo appear and fade away in our data (limiting magnitude ~ 20.5) at 40 Mpc, although KNe are expected to be found at larger distances, remaining bright for even less time above our detection threshold. In addition, bright ($r < 18.5$ mag) nearby KNe should have been identified in near real-time during the systematic spectroscopic classification effort of the ZTF Bright Transient Survey (Fremling et al. 2020), or part of ZTF collaborative programs aiming at young/fast transient discovery (e.g., Ho et al. 2020a; Yao et al. 2019). The query returned 10,419 candidates.
2. a *galaxy-targeted* search, requiring at least 2 detections in the alerts and at most 6 days lag between the first and last detection, with a positive crossmatch within a 100 kpc radius (see §3.1) with galaxies in the Census of the Local Universe (CLU; Cook et al. 2017) catalog further than 10 Mpc. ZTF should be sensitive to faint $M_r \sim -9.5$ novae at 10 Mpc, thus KNe at that distance (or closer) are expected to appear as bright transients that our all-sky search should be able to detect easily. Faint ($r < 20$ mag) KNe detected several times in known galaxies closer than 200 Mpc could have been found in near real-time and classified during the Caltech volume-limited “CLU experiment” (De et al. 2020), but this experiment has not yielded any KN candidate, yet. This query returned 1,569 candidates, 695 of which were possibly associated with galaxies > 40 Mpc away.

Together, these searches yielded 11,202 unique candidates (10,419 from the all-sky search and 1,569 from

the galaxy-targeted search, with an overlap of 786 candidates). We removed from the sample 79 sources with a counterpart in the *Gaia* DR2 catalog (separation $< 1.5''$) with a parallax measured to be inconsistent with 0 ± 1.081 mas, leaving 11,123 candidates to be further analyzed. This “stellarity” threshold was determined from the study of AllWISE catalog quasars present in the *Gaia* dataset (Luri et al. 2018).

2.3. Photometry and candidate selection criteria

Forced point spread function (PSF) photometry was performed at the location of each candidate using ForcePhotZTF (Yao et al. 2019). The median coordinates recorded in the available alerts was used to improve the location accuracy. A signal-to-noise ratio of $S/N = 3$ served as threshold for the photometric detection of a source.

First, we ran forced photometry on images taken starting a week before the first detection and until 2 weeks past the last detection of each candidate, in order to be less biased by spurious detections consistent with Gaussian noise in several thousands of images by considering the whole survey. Then, we stacked the forced photometry data points nightly in flux space to increase our sensitivity to faint sources. Finally, we ran forced photometry at the location of selected candidates for the whole duration of the survey and we rejected those candidates showing repeated activity that was not significant enough to be recorded in ZTF alerts. An example of how forced photometry and nightly stacked photometry can help reveal the behavior of faint transients is shown in Figure 2. We note that public ZTF images acquired after Public Data Release 2 on 2019 December 11 were not yet released for forced photometry when this work was carried out.

KNe are expected to fade rapidly, as AT2017gfo clearly confirmed. We automatically reject all those candidates that do not show any $> 2\sigma$ evolution for 6, 8, and 10 days from the first detection in g -, r -, and i -band respectively. Forced photometry and nightly stacking increased the measured duration of some candidates because they allowed us to recover additional faint data points. Thus we apply another filter on stacked light curves to reject those candidates with total time span > 14 days and with time lag between first and last detection larger than 10, 12, 14 days in g -, r -, and i -band, respectively.

Where possible, we use two different linear fits before and after the brightest point to measure the rise and fade rates. In each band, we required a minimum time baseline of 3 hours between first and last detection for the data points to be fit. If the brightest point of the

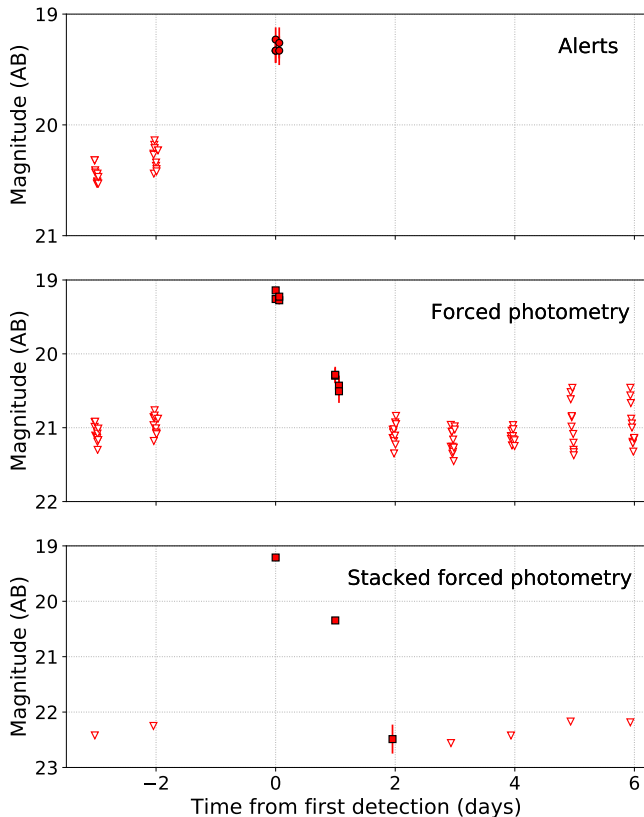


Figure 2. Light curve of the candidate ZTF19abcpig in r -band built with ZTF alerts (*top*), forced photometry (*center*), and nightly-stacked forced photometry (*bottom*). The light curve based only on ZTF alerts is shallower and offers this transient detection on 1 night only. Single-epoch photometry with alerts or forced photometry could reveal intra-night variability, while stacked forced photometry allowed us to monitor the evolution of faint transients for longer time. In this project we used a combination of these photometric techniques to search for KNe in ZTF data.

light curve occurred within 3 hours of the first or the last detection, a single linear fit was performed. Otherwise, 2 different linear fits were used before and after the brightest point to measure both the rise and fade rates.

Thanks to the rich optical/infrared observations available, it is tempting to use AT2017gfo as a prototypical KN to set the fading (or rising) thresholds to photometrically select KN candidates based on their photometric evolution. However, AT2017gfo is unlikely to be representative for its class, as deep follow-up and joint afterglow and KN fits of short GRBs have demonstrated (Gompertz et al. 2018; Ascenzi et al. 2019; Rossi et al. 2020). Instead, we chose thresholds for the fading rate based on a grid of KN models constructed with the Monte Carlo radiative transfer code POSSIS (Bulla 2019). Specifically, we use a

subset of the BNS grid presented in Dietrich et al. (2020) and the NSBH grid presented in Anand et al. (2020, in press). Both grids use geometries that are axially symmetric and constructed by varying three parameters: the mass ejected on dynamical timescales (“dynamical ejecta”, $M_{\text{ej}}^{\text{dyn}}$), the mass released from the merger remnant and debris disk (“post-merger” ejecta, $M_{\text{ej}}^{\text{pm}}$) and the observer viewing angle (Θ_{obs} , with $\Theta_{\text{obs}} = 0^\circ$ corresponding to a face-on view of the system). KN light curves are predicted for 11 viewing angles from a polar ($\Theta_{\text{obs}} = 0^\circ$) to an equatorial ($\Theta_{\text{obs}} = 90^\circ$) orientation and for the following choices of the ejecta masses: $M_{\text{ej},\text{BNS}}^{\text{dyn}} = [0.001, 0.005, 0.01, 0.02] M_\odot$, $M_{\text{ej},\text{BNS}}^{\text{pm}} \in [0.01, 0.13] M_\odot$ with a mass step of $0.02 M_\odot$ and $M_{\text{ej},\text{NSBH}}^{\text{dyn}}$ and $M_{\text{ej},\text{NSBH}}^{\text{pm}} \in [0.01, 0.09] M_\odot$ with a mass step of $0.01 M_\odot$. An half-opening angle of 30° is assumed for the lanthanide-rich dynamical component in both systems. This results in 308 and 891 KN light curves for the BNS and NSBH grid, respectively. We refer the reader to Dietrich et al. (2020) and Anand et al. (2020, in press) for more details about the adopted BNS and NSBH grids.

In Figure 3, we show the distribution of fading rates calculated between light curve peak epoch and peak time +6 days. In this work, we considered the threshold that constrains 95% of models of the grid, for each filter, i.e. 0.57, 0.39, and 0.27 mag day^{-1} for g -, r -, and i -band respectively. All those threshold choices fully encompass the fading rate of AT2017gfo (see blue vertical lines in Figure 3). Color evolution was not considered as a rejection criterion *a priori*, but it is discussed for the selected sources in § 3.

2.4. Candidate vetting

Out of 11,202 objects found querying the ZTF alert database, 645 candidates with at least 3 alerts passed the selection criteria described in § 2.3. All candidates were assessed by visually inspecting detection image triplets (made of science image, reference image, and subtraction) and light curves (individual exposures and nightly stacks). Light curves showing erratic behavior or deep upper limits in forced photometry between detections were rejected. Sequences of tens of consecutive exposures were prone to show spurious “ghost” sources that can mimic astrophysical fast transients. We effectively rejected those spurious sources aided by cone searches with Kowalski centered on the candidate’s coordinates, that allowed us to flag for further inspection those candidates with several other alerts located along the read-out channel direction within $20''$ from the central coordinates. This method was useful also to reject uncatalogued slow-moving asteroids (in any direction, not

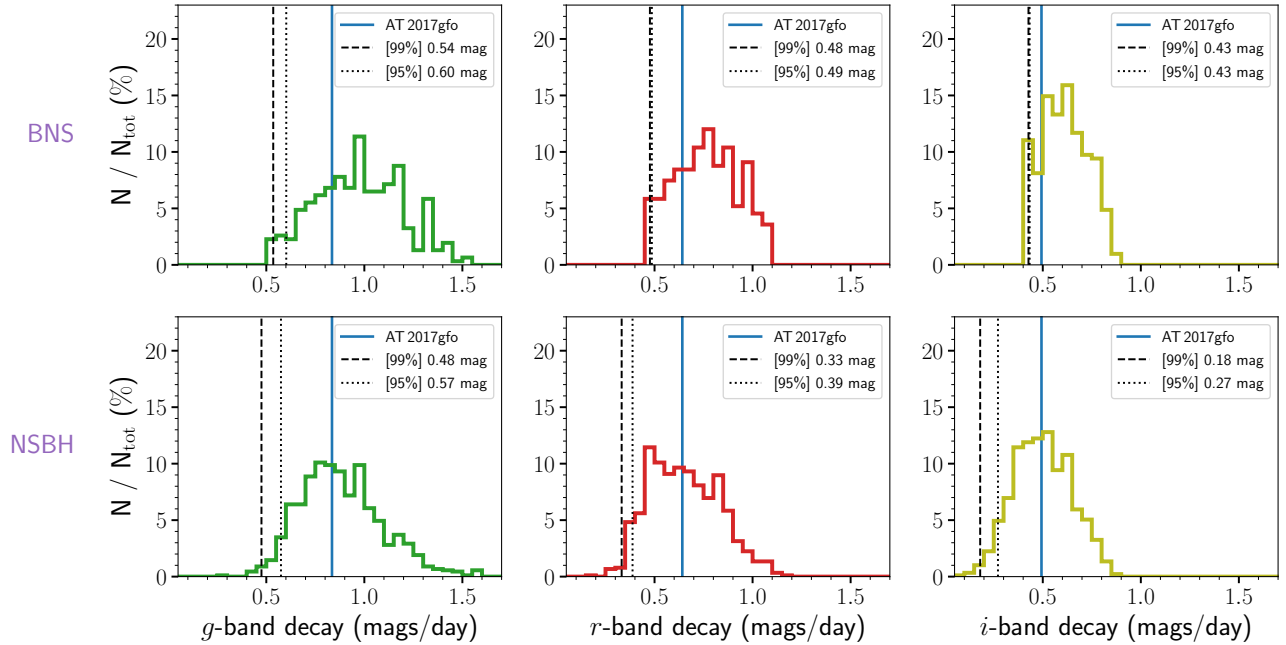


Figure 3. A grid of models tailored for BNS (*upper panel*) and NSBH (*lower panel*) mergers was used to determine suitable thresholds for KN candidate selection. Decay rates from peak to +6d later are shown in *g*-, *r*- and *i*-band from left to right. The lower 99% and 95% thresholds for each distribution are marked by dashed and dot-dashed vertical lines, respectively, and reported in the legend of each panel. Blue vertical lines mark the decay rates for AT2017gfo, the KN of GW170817.

only along the readout channel direction) that fell in our sample.

3. RESULTS

In this section, we present the results of our searches, divided into an all-sky search and a galaxy-targeted search. A total of 24 sources survived the selection criteria and strict quality checks, but none of them was deemed a robust KN candidate². The main properties of the selected candidates are presented in Table 1, where candidates are grouped by i) possible crossmatch with CLU galaxies, ii) proximity to an extended source further than $1.5''$ and no underlying source, iii) presence of an underlying source within $1.5''$, and iv) “hostless” candidates. Appendix B presents the candidates’ decay rates in each band and a detailed *post-mortem* of individual candidates can be found in Appendix A.

3.1. All-sky search

The untargeted search in 514 fields, requiring ≥ 3 detections, yielded 10,419 candidates, 23 of which passed our thorough vetting. Of these, 4 are spatially consistent with catalogued variable sources, 10 show variability

in archival Pan-STARRS 1 (PS1; Chambers et al. 2016) data or in additional ZTF data, 3 are likely stellar in origin, and 3 were rejected mainly because of the combination of color and color evolution (Figure 4) being incompatible with our grid of KN models. All the candidates rejected because of their color evolution were found at relatively low Galactic latitude $|b_{\text{gal}}| \leq 20$ deg, which supports the hypothesis of a stellar origin. This leaves us with 3 candidates.

ZTF19abqtcob/AT2019aadh is located 55 kpc ($21.88'$) from a galaxy 8.6 Mpc away. The light curve (Figure 5) shows a rapid *r*-band decay of $\alpha_r = 0.43$ mag day⁻¹, but no color information is available. Assuming an association with the nearby galaxy, the absolute magnitude at peak would be $M_r \sim -10$, consistent with classical nova luminosity. In addition, it is possible that ZTF19abqtcob is a foreground Galactic variable because of its low latitude ($b_{\text{gal}} = -10.0$) and the lack of any other possible host galaxy visible in its proximity. Therefore, we refrain from considering ZTF19abqtcob a viable KN candidate.

The two remaining candidates, ZTF19aabgebm/AT2019aacx and ZTF19aanhtzz/AT2019aacu, are both located at high Galactic latitude ($|b_{\text{gal}}| > 36$) and show red ($g - r > 0$ mag) color (Figure 5). ZTF19aabgebm is temporally and spatially coincident with the afterglow of the long GRB 190106A (Sonbas et al. 2019; Yurkov et al. 2019) at redshift $z = 1.859$ (Schady et al.

² Complete forced PSF photometry of these 24 sources from one week before the first detection until three weeks after the last detection can be found at https://www.astro.caltech.edu/~ia/lc_candidates_IA2020_ZTF_kn_rate.csv

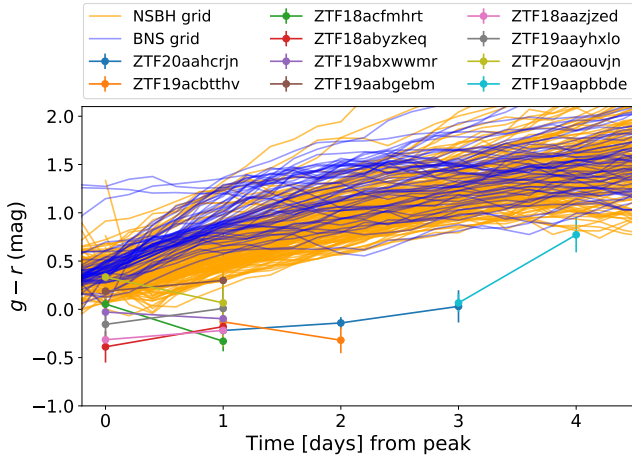


Figure 4. Here we represent the $g-r$ color evolution for BNS and NSBH grids from Bulla (2019) used in this work for the candidate selection criteria. The model light curves start (time=0 d) at g -band peak, while the candidates’ phase is considered from the epoch of the brightest data point, irrespective of the filter. Galactic extinction effects are small in the selected ZTF fields and a correction (here not applied) would decrease the $g-r$ magnitude difference, moving the data points further from the KN models in this parameter space. The combination of color and color evolution of ZTF19aabgebm, a GRB optical afterglow, could be consistent with NSBH KN models. The behaviour of other candidates for which $g-r$ information was available on multiple nights in the decline phase appears to be distant from the KN models considered in this work in this phase space.

2019). Forced photometry allowed us to calculate a decay rate for ZTF19aabgebm of $(1.24 \pm 0.26) \text{ mag day}^{-1}$ in both g and r bands. An independent identification of ZTF19aabgebm in ZTF data is described in Ho et al. (2020b).

ZTF19aanhtzz could be considered the most puzzling transient found during our searches. The red color ($g-r \sim 0.3 \text{ mag}$) disfavors the Galactic cataclysmic variable scenario, but there is no recorded gamma-ray signal temporally and spatially compatible with the optical transient to support the cosmological afterglow hypothesis. Deep G - and R -band images were acquired with the Low Resolution Imaging Spectrometer (LRIS; Oke et al. 1995) at W. M. Keck Observatory on 2020 June 22 UT, with 600 s of exposure time (Figure 6). LRIS data were processed using `lpipe` (Perley 2019), a fully automatic data reduction pipeline for imaging and spectroscopy. Photometry was performed using `SExtractor` (Bertin & Arnouts 2010) and it resulted in the non-detection of a source at the transient location to $3\text{-}\sigma$ limiting magnitudes of $G > 26.8$ and $R > 27.1$. A source is present at an angular distance of $3.5''$ in PS1 and Legacy Survey DR8 images ($r \sim 22$, labelled as source “A” in Figure 6)

and it can be modeled with a PSF shape according to the Legacy Survey DR8 catalog (Dey et al. 2019), which suggests the source to be stellar. No extended emission from source A is clearly detectable in the LRIS images.

The galaxy WISE J132245.14+572830.4, labelled as source “B” in Figure 6, is placed at a distance of 267 Mpc by the Galaxy List for the Advanced Detector Era catalog (GLADE; Dalya et al. 2018), which would imply a projected distance of $\sim 83 \text{ kpc}$ between the galaxy and ZTF19aanhtzz, if it was indeed the transient’s host. Such a distance is within the range of projected offsets for neutron star mergers, considering short GRBs as a proxy (Berger 2014). On 2020-07-02 UT, we acquired a spectrum of WISE J132245.14+572830.4 using the Double Spectrograph (DBSP) mounted on the Palomar 200-inch telescope with 600 s of exposure time. The data were processed with a custom PyRAF reduction pipeline for DBSP (Bellm & Sesar 2016). The spectrum shows prominent Balmer series and other common galaxy features that place the galaxy at redshift $z = 0.103$, i.e. at a luminosity distance of 490.57 Mpc and a projected distance of $\sim 135 \text{ kpc}$ from the transient. The projected distance is too large for WISE J132245.14+572830.4 to be a reliable host of ZTF19aanhtzz (although short GRB were found with a projected distance from the host larger than 100 kpc; Berger 2014).

If neither source A or Source B are the transient’s host, we consider the hypothesis of an underlying host galaxy being too faint to be detectable in our Keck+LRIS images. If such a faint host was located at a distance of $< 250 \text{ Mpc}$, its luminosity would be $M \sim -10$ or fainter, typical of dwarf galaxies satellite of more massive galaxies. The apparent lack of such a massive galaxy in the field of ZTF19aanhtzz makes this scenario improbable. It is possible that a more massive host galaxy at high redshift exists that was not detectable in our Keck+LRIS images. If ZTF19aanhtzz was a Galactic source, located in the outskirts of the Milky Way, the LRIS limit suggests the absolute magnitude of the quiescent counterpart to be $M > 7 \text{ mag}$. Based on a typical HR diagram, this only allows a main sequence star that is later than K0 in spectral type, or a white dwarf, to be the progenitor star, but a M-dwarf progenitor is likely excluded by the non-detection in z -band by the Legacy Survey. We consider now the scenario in which ZTF19aanhtzz was a cosmological relativistic afterglow. The lack of a detected GRB and the observation of the rise phase of the transient make it unlikely for ZTF19aanhtzz to be the afterglow of a relativistic explosion viewed on-axis. Although a detail analysis using off-axis GRB models (e.g., van Eerten et al. 2010; Beniamini et al. 2020) is outside the scope of this paper,

we suggest that a slightly off-axis relativistic explosion might explain the behaviour of this transient. In summary, with the data in hand, a conclusive answer regarding the nature of ZTF19aanhtzz/AT2019aacu is yet to be found, but a cosmological afterglow origin scenario is favored.

3.2. Galaxy-targeted search

In addition to all-sky searches, we conducted deeper galaxy-targeted queries by requiring at least two detections (instead of three detections) to be present for each candidate. We found that 92 candidates passed the automatic selection criteria and could be spatially cross-matched with CLU galaxies > 10 Mpc away within a 100 kpc radius. Of those, 3 candidates pass the visual inspection and quality checks, namely ZTF19abzwbxy, ZTF20aaouvjn, and ZTF18achqdzh (Table 1). The former two were also found during the all-sky search (see §3.1), while this galaxy-targeted search yielded the new candidate ZTF18achqdzh, a bright transient ($M_r < -17$) likely generated by nuclear activity. All these candidates were ruled out. We conclude that none of our candidates can be considered a viable KN associated with nearby (< 200 Mpc) cataloged galaxies.

4. DISCUSSION

In this work, we used rigorous criteria to identify uncommon transients that could possibly be KNe. The rich ZTF dataset provided us with high cadence photometry and, usually, color information that we could use to find rapidly fading candidates possibly associated with nearby galaxies and separate them from other classes of transients or variables. Our searches did not yield any source that we claim to be a viable KN candidate, although the nature of some fast transients remains unknown, including the possibly extragalactic fast transient ZTF19aanhtzz. It is possible that KNe were present in the dataset, but they were missed in this analysis because, for example, they were too close to the detection limit, due to the pipeline detection efficiency, or because they evolved in different ways than we expected based on available models and on the knowledge of GW170817.

This search for KNe in the ZTF survey, independent of GW or short GRB triggers, complements the ZTF searches for optical counterparts to 13 neutron star mergers found in GWs during O3, described in Kasliwal et al. (2020). In that work, we used the query and photometry methods described in §2 to search for KNe by requiring ≥ 1 detection in the alert stream over the 95% of the localization skymaps in the 3 days following the mergers. The analysis presented in Kasliwal et al.

(2020) led to no viable KN counterpart to O3 neutron star mergers.

This work further demonstrated the importance of repeated, deep observations of wide-field surveys to better understand the nature of newly identified astronomical transients. A key problem in KN searches in “archival” survey data is the ability to recognize KNe without spectroscopic follow-up. The problem of photometric identification of KNe among other transients was already addressed, for example, by Cowperthwaite & Berger (2015); Doctor et al. (2017); Cowperthwaite et al. (2018); Bianco et al. (2019). In general, these works find that a combination of color information (at a given time) and rapid evolution is effective at separating KNe from other extragalactic sources such as supernovae. In our case, the selection criteria on the fading rate and transient duration had already helped us remove all supernova candidate from our sample, leaving AGN and Galactic sources as main contaminants, as expected from previous fast transient searches (e.g., van Roestel et al. 2019; Andreoni et al. 2020b).

We use the grid of models described in §2.3 to visualize the expected $g - r$ color evolution over time for BNS and NSBH mergers. Magnitudes and colors (specifically $g - r$ in this case) are expressed in the AB system. Figure 4 shows that all those candidates for which inter-night color evolution is available have color evolution different than predicted by KN models. Interestingly, the candidate that approaches KN models the most is ZTF19aabgeb, the red and rapidly-evolving afterglow of GRB 190106A. We also considered a set of 30 KN models from the grid computed by Kasen et al. (2017) with parameters similar to the blue component of AT2017gfo in the ranges $M_{ej} \in [0.01, 0.04] M_{\odot}$, $v_k \in [0.1 - 0.3]$, and $X_{lan} \in [1e - 5, 1e - 4]$ for ejecta mass, kinetic ejecta velocity, and lanthanide fraction, respectively. In the first 3 days from the merger, these models are characterized by blue colors and thus provide better match to our KN candidates compared to the POSSIS grid shown in Figure 4. However, the resulting light curves get redder even more steeply than the POSSIS grid, placing the candidates even further from the region of the phase space expected for KNe at later epochs.

In general, systematic searches in the broadest possible parameter space covering the models presented in Section 2.3 yield reasonable fits to our selected candidates (Coughlin et al. 2018; Stachie et al. 2019); the lack of either explosion time or distance constraints make it possible to fit them within error bars of the models. This emphasizes the need for rapid photometric follow-up of

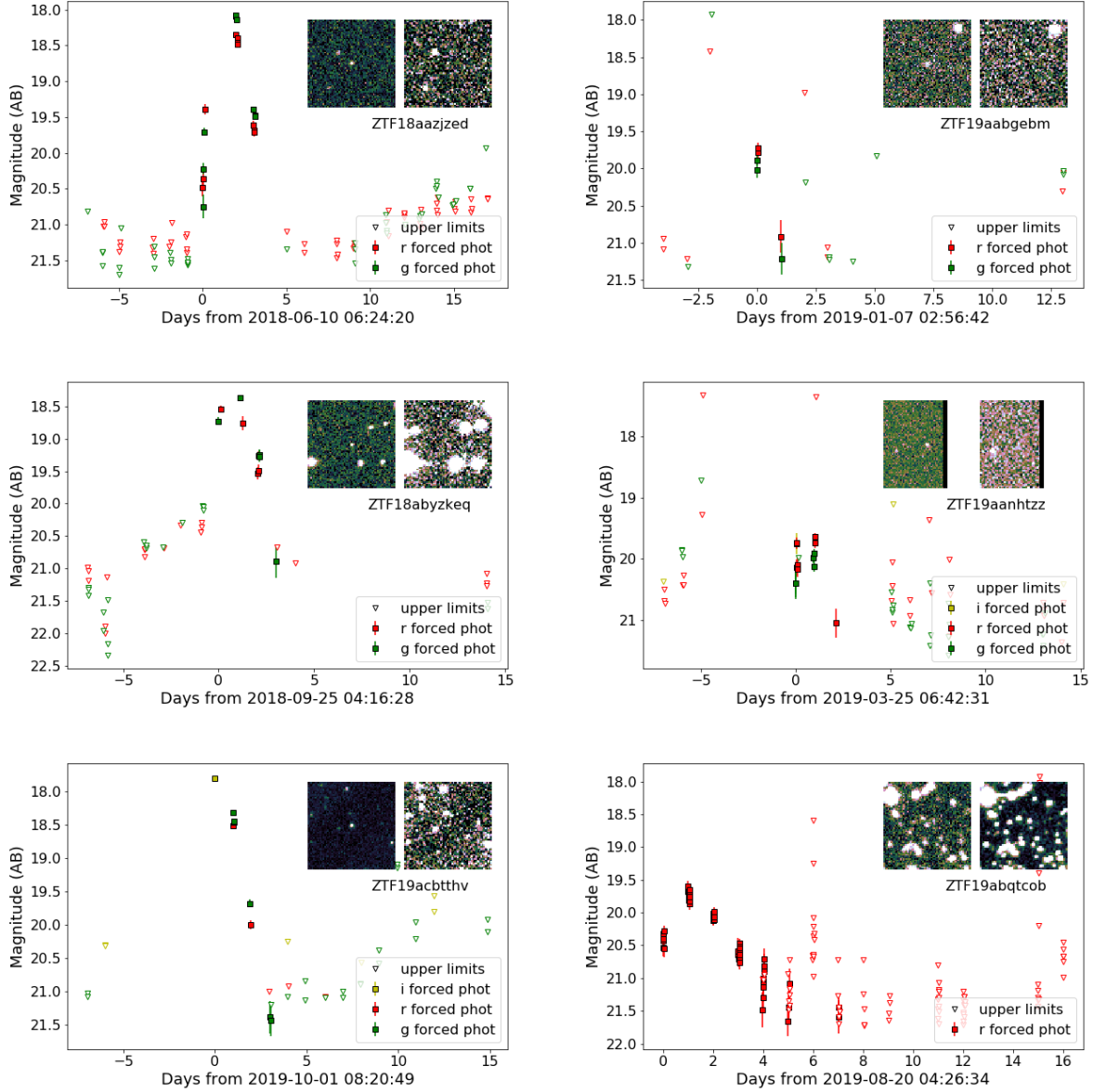


Figure 5. A compilation of forced photometry light curves of candidates presented in Table 1. The compilation includes the GRB afterglow ZTF19aabgebm/AT2019aacx (*top right*) and the still mysterious fast transient ZTF19aanhtzz/AT2019aacu (*center right*). The inset images show the science image (left) and the reference image (right) cutouts. The cutouts are oriented with North to the top and East to the left and have a side of $60''$.

sources of this type to make the most straightforward classifications.

5. KILONOVA RATES

The searches conducted during the first 23 months of the ZTF survey, based off of alerts, have not yielded any likely KN candidate. This result can be used to constrain KN rates to compare against neutron star merger rates obtained from GW and short GRB observations.

Rates were estimated using `simsurvey`³ (Feindt et al. 2019), a simulation software package that accounts for custom transient light curves and observational parameters of the survey. `simsurvey` uses Monte Carlo methods to simulate synthetic lightcurves. We used ZTF data to calculate the number of KNe detected for each rate used in the injection of synthetic transients. Milky-Way extinction was applied based on the Schlegel et al.

³ <https://simsurvey.readthedocs.io/en/latest/>

Name	RA	Dec	b_{gal}	distnr	sgscore	CLU match	Comment
Name	(deg)	(deg)	(deg)	(arcsec)		(boolean)	
ZTF18aazjzed ^a	245.80994	65.01023	39.8	-	-	1	CV
ZTF19abzwbxy ^b	305.86048	6.66687	-17.0	< 1.5	0.13	1	QSO
ZTF18achqdzh ^c	40.20850	-9.17101	-58.5	< 1.5	0.12	1	Bright nuclear variability
ZTF20aaouvjn ^b	169.87812	15.41104	65.7	-	-	1	Multiple outbursts in ZTF
ZTF19abqtcob ^a	295.23436	2.22770	-10.0	-	-	1	Extragalactic nova or foreground CV?
ZTF18abyzkeq	342.39259	37.93156	-19.0	14.35	0.10	0	CV
ZTF19aayhxlo	295.77816	48.32182	12.0	8.85	0.06	0	Post-detections in ZTF
ZTF19acecsfi	119.87837	44.27264	30.3	23.62	0.02	0	Likely stellar/CV
ZTF19aabgebm	29.88002	23.84546	-36.4	9.09	0.01	0	GRB190106A afterglow
ZTF20aaocrjn	109.06754	35.75254	20.2	9.70	0.03	0	Multiple bursts in ZTF
ZTF18abuzpri	288.24987	61.55687	21.2	< 1.5	0.32	0	Stellar
ZTF19abqiwjq	293.06491	6.72184	-5.9	< 1.5	0.38	0	Pre-activity in PS1 images
ZTF19abqneae	295.60303	0.56979	-11.1	< 1.5	0.00	0	Pre-activity in PS1 images
ZTF19acbthtv	16.02320	50.12632	-12.7	< 1.5	0.49	0	Pre- and post-detections in PS1 and ZTF
ZTF19acszwgx	271.89500	10.59102	14.5	< 1.5	0.03	0	Pre-activity in PS1 images
ZTF19abcputm	294.13549	-7.35038	-13.4	< 1.5	0.14	0	Pre-activity in PS1 images
ZTF19abogdfr	293.39693	-17.64588	-17.1	< 1.5	0.08	0	Pre-activity in PS1 images
ZTF19aapbbde	270.30443	13.28065	17.0	< 1.5	0.37	0	Pre-activity in PS1 images
ZTF19abcpiag	264.64519	1.42066	16.8	-	-	0	Catalogued variable source
ZTF18acfmhrt	30.63920	55.41712	-6.1	-	-	0	Color evolution unlike KN
ZTF19abxwwmr	313.90428	22.98274	-14.2	-	-	0	Color evolution unlike KN
ZTF19aanhtzz	200.71300	57.46357	59.2	-	-	0	Cosmological afterglow?
ZTF19abudvoz	46.68777	46.15358	-10.6	-	-	0	Pre-activity in PS1 images
ZTF18acsjqjd	29.91694	54.17361	-7.4	-	-	0	Pre-activity in PS1 images

^aWithin 100 kpc from a galaxy < 10 Mpc away

^bFound in both all-sky and galaxy-targeted searches

^cFound only in galaxy-targeted search

Table 1. Candidates that passed our selection criteria described in §2.3. Along with the equatorial J2000 coordinates and Galactic latitude (b_{gal}), we indicate the distance to the closest source within $30''$ with star/galaxy classification score $\text{sgscore} \leq 0.1$, suggesting the source to be a possible galaxy. The star/galaxy classification score of those candidates lying on top of faint sources ($\text{distnr} < 1.5''$) is reported even where $\text{sgscore} > 0.1$. The 24 candidates are grouped by their possible crossmatch with CLU galaxies, proximity to an extended source further than $1.5''$ and no underlying source, presence of an underlying source within $1.5''$, and finishing with “hostless” candidates. Finally, the comment column summarizes the *post-mortem* description of each candidate from §A.

(1998) reddening maps. We considered three types of KN light curves: a 3-day constant luminosity (or “top-hat”) model, a linear decay model, and models based on radiative transport simulations. Synthetic sources are injected in `simsurvey` assuming a broad range of rates. Our limits on the rate are chosen at the point where three of the injected KNe are recovered, as dictated by Poissonian small number statistics for a 95% confidence level (Gehrels 1986).

- *Top-hat* – Constant 3-day light curve model (Appendix C). The top-hat model at $M_{g,r,i} = -16$ (about the maximum brightness measured for AT2017gfo) yielded a rate of $R < 398 \text{ Gpc}^{-3} \text{ yr}^{-1}$ for at least one 5σ detection, $R < 930 \text{ Gpc}^{-3} \text{ yr}^{-1}$

for at least two 5σ detections separated by at least 3 hr, and $R < 1121 \text{ Gpc}^{-3} \text{ yr}^{-1}$ by requiring at least three 5σ detections. Appendix C presents a table with the results for a range of absolute magnitudes $M \in [-12, -17]$.

- *Linear decay* – We considered a grid of linear decay models by varying the starting absolute magnitude $M \in [-14.5, -17.5] \text{ mag}$ and the decay rate $\alpha \in [0.3, 1.5] \text{ mag day}^{-1}$ to encompass the most probable decay rates that we considered to chose our selection criteria (Figure 3, Appendix D). These models do not account for color evolution and are filter-agnostic. The table in Appendix D presents the results for the linear decay grid and Figure 7

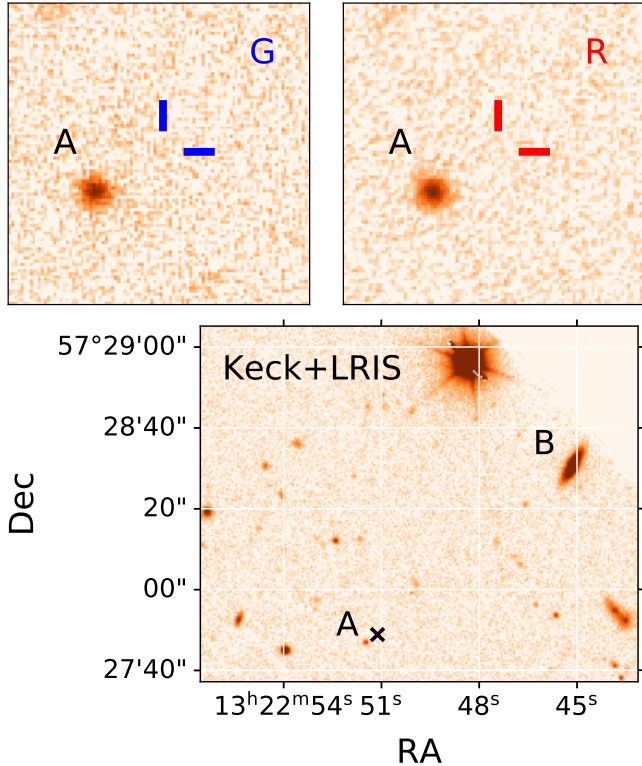


Figure 6. Keck+LRIS images of the field where ZTF19aanhtzz/AT2019aacu was found. The top panels show G - and R -band images centered on the transient location, where the side of each squared image measures $13.5''$. The bottom panel shows a broader view of the field, where the transient location is marked with a black cross. All figures are oriented with North to the top and East to the left. Source “A” is likely stellar and it is the closest object to ZTF19aanhtzz, with an angular separation of $3.5''$. Source “B” is WISE J132245.14+572830.4, a galaxy listed in the GLADE catalog and located at an angular separation of $1.07'$ from ZTF19aanhtzz. Our DBSP spectrum suggests the redshift of this galaxy to be $z = 0.103$, which implies a projected distance of ~ 135 kpc, too large for a reliable host association.

represents contours indicating rates of $R = 500$, 1000 , and $2000 \text{ Gpc}^{-3} \text{ yr}^{-1}$.

- *Radiative transport simulations* – We use the best-fit model for AT2017gfo obtained in Dietrich et al. (2020) and assume two KN populations: the first where all KNe have light curves like AT2017gfo, the second where KNe are intrinsically like AT2017gfo, but with viewing angle i uniformly distributed in $\cos(i)$. The results are shown in Appendix E. In addition, we explore the parameters space of ejecta masses for the models tailored to BNS and NSBH from Dietrich et al. (2020) and Anand et al. (2020, in press), also described in §2.3. The resulting rates for the grid of

models obtained with a fixed half-opening angle $\phi = 30$ deg are shown in Appendix G and illustrated in Figure 8. We note that the NSBH grid provides less constraining results. The light curves are fainter at peak, and broader compare to the BNS grid. Therefore, the detected light curves would be observable for longer times, but in a smaller distance range.

The rates obtained by requiring three 5σ detections represent our all-sky search conservatively. In fact, we queried the ZTF database selecting sources with at least 3 detections in the alerts, however only one alert (chronologically the last one) needs to have $\geq 5\sigma$ significance. For example, it is possible that only 1 alert is issued for a transient when its flux passes the 5σ threshold, but the alert packet includes information about low-significance detections (between 3σ and 5σ) that did not trigger any alert generation. These low-significance detections were accounted for during our query. In addition, our experiment targeting CLU galaxies required only 2 detections at least 3 hr apart, the first of which could be a low-significant detection below the 5σ mark.

On the other hand, *simsurvey* does not account for the detection efficiency curve of the ZTF data processing pipeline, which is currently unavailable. Frohmaier et al. (2017) calculated the detection efficiencies for the Palomar Transient Factory (PTF) pipeline (that relies on the image-subtraction algorithm developed by Alard & Lupton 1998), obtaining a completeness of $\sim 95\%$ where the host galaxy surface brightness is $\lesssim 10\%$ of the transient brightness. From the PTF experience, we can also expect the detection completeness to drop to $60\% - 70\%$ in the presence of bright hosts with $r \lesssim 18$ mag (Frohmaier et al. 2017). However, a dedicated study of the recovery efficiency of the ZTF pipeline (that relies on the ZOGY image-subtraction algorithm; Zackay et al. 2016) is necessary to provide exact completeness figures. Such a study lies outside the scope of this paper.

We estimated that the random misalignment between science and reference images can cause a loss of $\sim 1\%$ of the chip area. Also, Fremling et al. (2020) calculated that $\sim 1\%$ of astronomical transients will be lost due to proximity to bright sources outside the Galactic plane.

Catalog incompleteness should also be taken into account. A galaxy number completeness lower limit of 57% integrated between $0 < z < 0.05$ was obtained for the NASA/IPAC Extragalactic Database (NED) by Fremling et al. (2020) using Type Ia supernovae as proxy. The CLU catalog encompasses NED and includes $> 18,000$ galaxies within 200 Mpc found during the PTF $H\alpha$ survey (Cook et al. 2017), so we expect our integrated completeness to be larger than 57% .

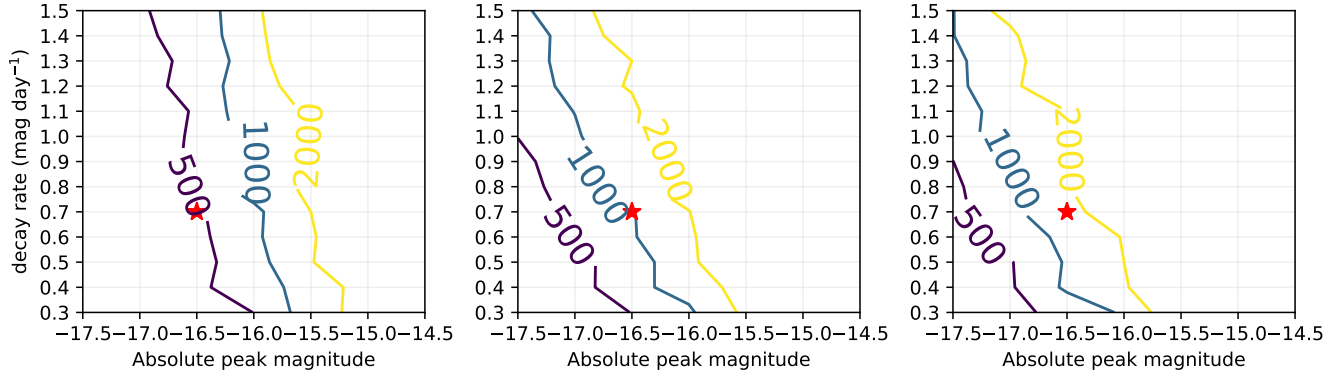


Figure 7. Estimated upper limits on the KN rate ($\text{Gpc}^{-3} \text{yr}^{-1}$, indicated by colored contours) per peak absolute magnitude and linear decay rate requiring 1 (left), 2 (middle) and 3 (right) detections (5σ) for each light curve at a 95% confidence level. The red star marker indicates where a blue KN similar to AT2017gfo would lie if it had a starting absolute magnitude of $M = -16.5$ and a linear decay rate of 0.7 mag day^{-1} , which is the approximate average between the measured decay rates in g - and r -bands. As expected, the slower/brighter KNe are, the more stringent the limit on rates from ZTF is.

With these caveats in mind, we will now discuss the main results obtained in this analysis, considering the case of 2 5σ detections as the best representation of our results.

Using the best-fit model to AT2017gfo in radiative transfer simulations, for two 5σ detections, we obtained a rate of $R < 1775 \text{ Gpc}^{-3} \text{yr}^{-1}$, while considering a population of KNe with the same intrinsic properties of AT2017gfo and with a uniform viewing angle distribution, we obtained a rate of $R < 4029 \text{ Gpc}^{-3} \text{yr}^{-1}$. As discussed in §3, models obtained with POSSIS radiative transport simulations tend to err towards redder and fainter KNe. Assuming a blue KN with a linear decay rate of $\alpha = 0.7 \text{ mag day}^{-1}$ as for AT2017gfo between g - and r -band with a peak magnitude of $M = -16.5$, we can constrain the KN rate to be $R < 937 \text{ Gpc}^{-3} \text{yr}^{-1}$ ($1363 \text{ Gpc}^{-3} \text{yr}^{-1}$) by requiring 2 (3) detections in ZTF data (5σ).

Before the discovery of GW170817, Doctor et al. (2017) constrained the bright KN rate to be $R < 2.4 \times 10^4 \text{ Gpc}^{-3} \text{yr}^{-1}$ (90% confidence) with the Dark Energy Survey. Then, other surveys constrained the KN rate using AT2017gfo as reference. Smartt et al. (2017) set the KN rate to be $R < 3.0 \times 10^4 \text{ Gpc}^{-3} \text{yr}^{-1}$ (95% confidence) with ATLAS and Yang et al. (2017) placed an upper limit of $R < 9.9 \times 10^4 \text{ Gpc}^{-3} \text{yr}^{-1}$ (90% confidence) with 13 months of nightly monitoring of nearby galaxies with DLT40. The limits calculated in this work are more constraining than those listed above. A more stringent limit of $R < 800 \text{ Gpc}^{-3} \text{yr}^{-1}$ was placed by Kasliwal et al. (2017) with PTF data, also focusing on galaxies present in the CLU catalog (although a correction for the galaxy catalog completeness was not applied). Our results are consistent with ZTF survey sim-

ulation predictions described in Sagués Carracedo et al. (2020). The non-detection of a KN in almost 2 years of survey suggests that the number of KNe detectable with ZTF estimated by Scolnic et al. (2018) (using a fixed rate of $R = 1000 \text{ Gpc}^{-3} \text{yr}^{-1}$ and average values for the cadence, zero point, and sky noise) may have been too optimistic.

When comparing KN rates with BNS merger or short GRB rates, a KN luminosity function should be considered, but its uncertainties are still large (Kasliwal et al. 2020). Our limits using a GW170817-like model are consistent with isotropic equivalent short GRB rates including, for example, $R = 270_{-180}^{+1580} \text{ Gpc}^{-3} \text{yr}^{-1}$ (Fong et al. 2015), $R = 352_{-281}^{+810} \text{ Gpc}^{-3} \text{yr}^{-1}$ (Della Valle et al. 2018), or $R = 160_{-100}^{+200} \text{ Gpc}^{-3} \text{yr}^{-1}$ (Dichiara et al. 2020). ZTF results are also consistent with rates estimated with population synthesis models such as $R = 600_{-300}^{+600} \text{ Gpc}^{-3} \text{yr}^{-1}$ (Chruslinska et al. 2018), a solution among those that returned higher rates that are consistent with the BNS merger rate from GWs (Abbott et al. 2017b, 2020) (see also Tutukov & Yungelson 1993).

Assuming that all BNS mergers generate a bright optical transient, the ZTF limits can constrain the upper side of rates obtained via GW observations of $250\text{--}2810 \text{ Gpc}^{-3} \text{yr}^{-1}$ (Abbott et al. 2020), under the assumption that most KNe are intrinsically similar to AT2017gfo. The ZTF KN rate can also constrain the rates of $R = 1109_{-657}^{+1432} \text{ Gpc}^{-3} \text{yr}^{-1}$ (Jin et al. 2018), calculated from short GRB observations, and $R = 830_{-661}^{+2091} \text{ Gpc}^{-3} \text{yr}^{-1}$, derived from BNS system observations in the Milky Way ($R_{\text{BNS}} = 83.0_{-66.1}^{+209.1} \text{ Myr}^{-1}$ at 95% confidence level; Kalogera et al. 2004) assuming a galaxy number density of $\sim 10^{-2} \text{ Mpc}^{-3}$ as in Della Valle et al. (2018). Our results are consistent with BNS

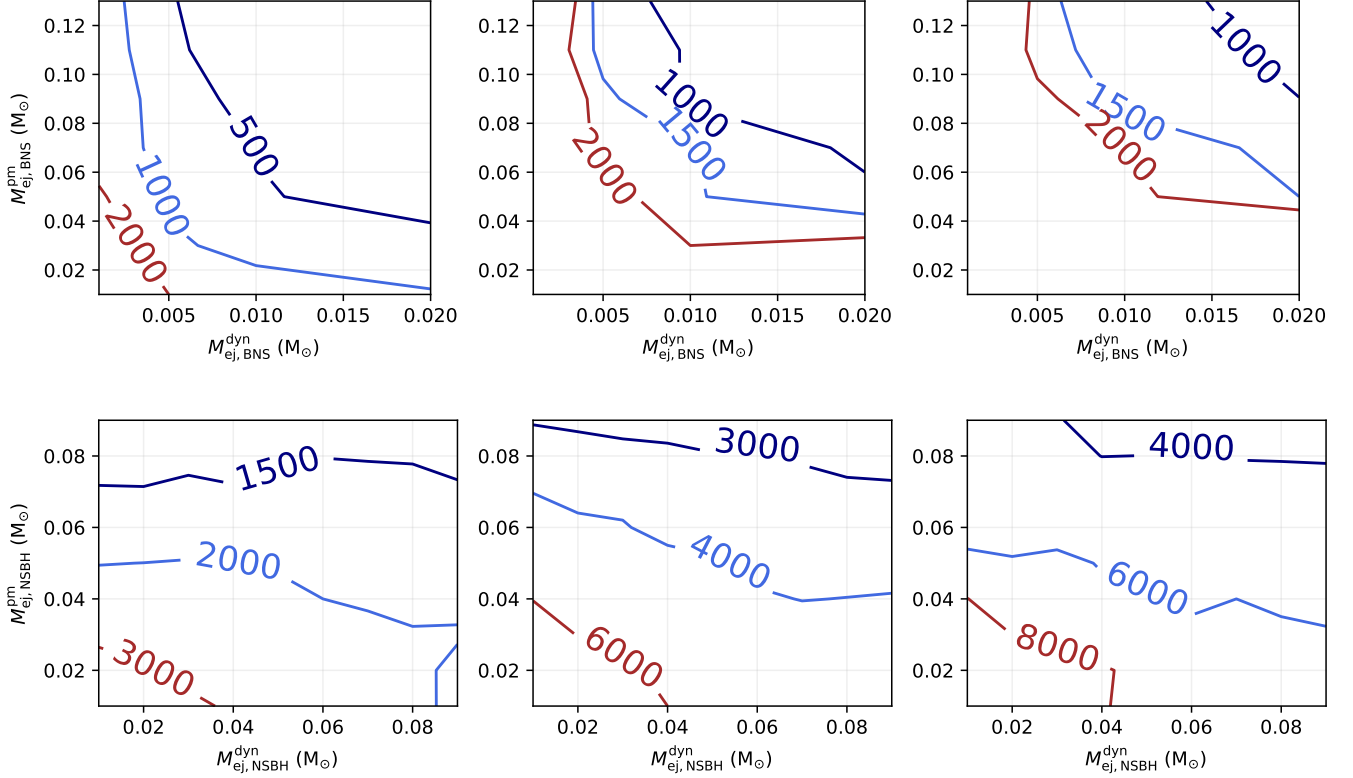


Figure 8. Estimated upper limits on the KN rate ($\text{Gpc}^{-3} \text{yr}^{-1}$, indicated by colored contours) per ejecta mass component from BNS (*top*) and NSBH (*bottom*) grids requiring 1 (*left*), 2 (*middle*) and 3 (*right*) detections (5σ) for each light curve at a 95% confidence level.

merger rates obtained by Kim et al. 2015, who calculated $R_{\text{BNS}} = 21_{-14}^{+28} \text{Myr}^{-1}$ at 95% confidence level. Similarly, our result is compatible with the updated Milky Way BNS merger rate obtained by Pol et al. 2019, 2020 of $R_{\text{BNS}} = 37_{-11}^{+24} \text{Myr}^{-1}$ at 90% confidence level. The rates from Kim et al. 2015 and Pol et al. 2020 translate into $R = 210_{-140}^{+280} \text{Gpc}^{-3} \text{yr}^{-1}$ and $R = 370_{-110}^{+240} \text{Gpc}^{-3} \text{yr}^{-1}$, respectively, using again a galaxy number density of 10^{-2}Mpc^{-3} .

Figure 9 offers a visual representation⁴ of the rates discussed in this section.

If changes in the viewing angle make the KN rate become $R < 4029 \text{Gpc}^{-3} \text{yr}^{-1}$ as we predicted using radiative transfer models (Bulla 2019), our ZTF limits would become unconstraining for BNS mergers. The current rate from GWs does not account for NSBH mergers, that also are expected to be accompanied by bright KNe under favorable conditions of mass ratios and neutron star radii, thus it could be interesting to compare the ZTF

constrains with new BNS + NSBH merger rates from GW observations in the near future.

6. CONCLUSIONS

We explored 23 months of ZTF survey data searching for rapidly-fading transients that could be classified as KNe based on their photometric evolution. In addition to ZTF alert database queries, we employed forced PSF photometry and nightly flux stacking to improve our ability of recognizing KNe among $> 10^4$ candidates. All most promising transients turned out to be either Galactic foreground or cosmological background sources, leaving no viable KN in the sample. The observations allowed us to place constraints on the KN rate for a variety of radiative transport based models, specifically $R < 1775 \text{Gpc}^{-3} \text{yr}^{-1}$ for KNe similar to AT2017gfo and $R < 4029 \text{Gpc}^{-3} \text{yr}^{-1}$ for KNe with the same intrinsic properties of AT2017gfo assuming a uniform viewing angle distribution.

Several on-going surveys observe large volumes of sky at increasingly high cadence including, for example, Pan-STARRS (Chambers et al. 2016), the Asteroid

⁴ A “living” version of Figure 9 can be found at https://www.astro.caltech.edu/~ia/plot_gantt_chart_rates.pdf

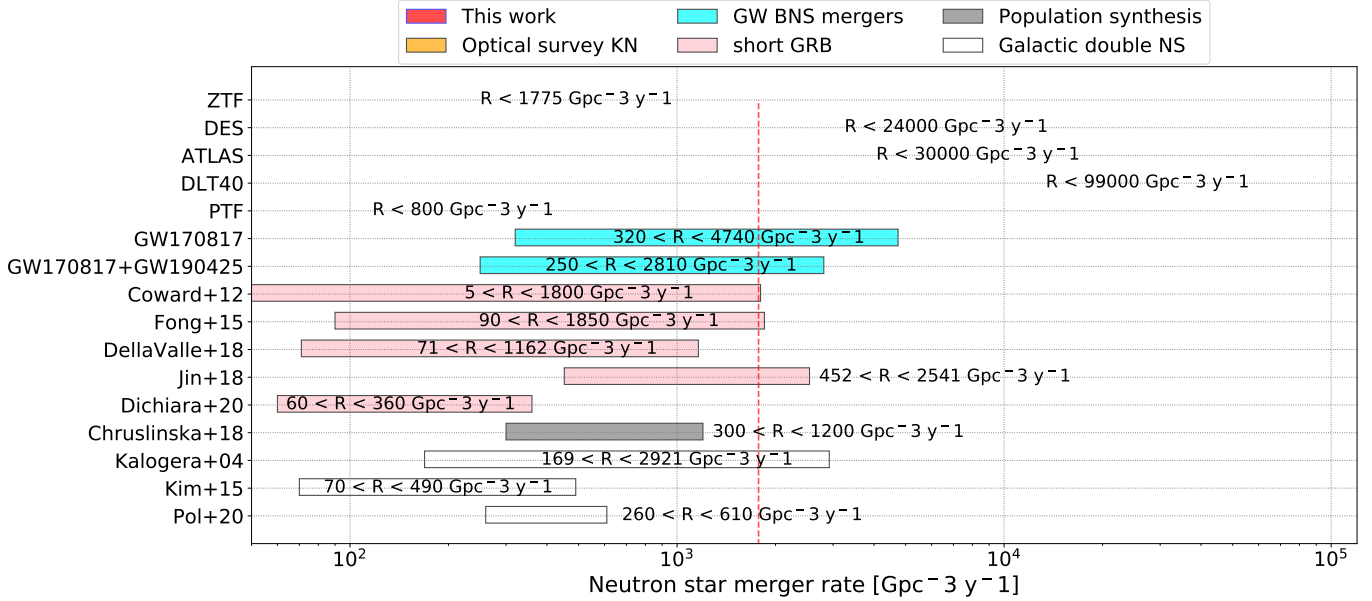


Figure 9. The constraints on the KN rate obtained in this work (red bar, dashed red line) can be compared with the results of other projects (Kasliwal et al. 2017; Smartt et al. 2017; Yang et al. 2017) that considered a uniform KN population similar to GW170817 (barred the DES result, produced before the discovery of GW170817; Doctor et al. 2017). If all BNS mergers are accompanied by KNe as bright as GW170817, then our results could improve the constraints on the BNS merger rate obtained from GW observations (Abbott et al. 2017c, 2020). In fact, the true KN luminosity function is still poorly understood. The plot also includes some examples of neutron star merger rates from short GRBs (Coward et al. 2012; Fong et al. 2015; Della Valle et al. 2018; Jin et al. 2018; Dichiaro et al. 2020), population synthesis (Chruslinska et al. 2018), and BNS observations in the Milky Way (Kalogera et al. 2004; Kim et al. 2015; Pol et al. 2020) for comparison.

Terrestrial-impact Last Alert System (ATLAS⁵), and All-Sky Automated Survey for Supernovae (ASAS-SN; Shappee et al. 2014; Holoiu et al. 2017), ZTF itself, and multi-facility programs such as “Deeper, Wider, Faster” (Andreoni et al. 2020b, Cooke et al. in preparation;). Dedicated searches in these large datasets may be necessary to find KNe (see for example Smartt et al. 2019; McBrien et al. 2020, regarding on-going KN searches with PS1).

Based on this study, it is clear that both increased depth and rapid follow-up of interesting candidates, as executed for example in the ZTF follow-up of gravitational-wave events (Coughlin et al. 2019b; Kasliwal et al. 2020, and Anand et al., in press), should be prioritized to maximize the probability of a KN discovery. In about 2 years, ZTF has allowed us to place tighter constraints on the KN rate than most other surveys, but there is room for improvement in the near future. Two more years of ZTF survey will naturally halve the rate limits that we calculated. To maximize the volume explored, depth should be prioritized over area (e.g., Ghosh et al. 2017). Nightly stacking of ZTF images (Goldstein et al., in preparation) or longer

exposures may be successful avenues for KN discovery. The identification of KN candidates in real time is indisputably valuable because it can trigger rapid multi-wavelength follow-up observations, including optical/IR spectroscopy. On the other hand, the limited availability of 8-m class telescopes, necessary to classify sources fainter than ~ 21 mag, represents a challenge for discovery programs relying on deeper observations.

This work has shown that photometric monitoring combined with archival information from multiple surveys can also be very effective at separating promising KN candidates from other types of rapidly evolving transients. The ability to recognize KNe solely based on their light curves will be key during the upcoming Legacy Survey of Space and Time (LSST; Ivezić et al. 2019) at the Vera C. Rubin Observatory. Photometric KN candidate identification will be possible, in particular, if a “rolling” cadence is chosen that entails nightly multi-band imaging (Andreoni et al. 2019a). Although on-going surveys have some potential to detect KNe independently of GW or GRB triggers, we expect high cadenced LSST observations to yield many serendipitous KN discoveries.

Software: Astropy (The Astropy Collaboration 2018), Pandas (pandas development team 2020), Matplotlib

⁵ <http://atlas.fallingstar.com/>

(Caswell et al. 2020), Kowalski (Duev et al. 2019), lpipe (Perley 2019), PostgreSQL⁶, PyRAF DBSP data reduction pipeline (Bellm & Sesar 2016), ztfquery (Rigault 2018), SExtractor (Bertin & Arnouts 2010), ForcePhotZTF (Yao et al. 2019).

ACKNOWLEDGMENTS

We thank the anonymous referee who helped us improve the quality of the manuscript. We thank P. Nugent for reviewing the manuscript and providing us with useful feedback. We thank D. Perley for useful discussion. Based on observations obtained with the Samuel Oschin 48-inch Telescope and the 60-inch Telescope at the Palomar Observatory as part of the Zwicky Transient Facility project, a scientific collaboration among the California Institute of Technology, the Oskar Klein Centre, the Weizmann Institute of Science, the University of Maryland, the University of Washington, Deutsches Elektronen-Synchrotron, the University of Wisconsin-Milwaukee, and the TANGO Program of the University System of Taiwan. Further support is provided by the U.S. National Science Foundation under Grant No. AST-1440341.

This work was supported by the GROWTH (Global Relay of Observatories Watching Transients Happen) project funded by the National Science Foundation under PIRE Grant No 1545949. GROWTH is a collaborative project among California Institute of Technology (USA), University of Maryland College Park (USA), University of Wisconsin Milwaukee (USA),

Texas Tech University (USA), San Diego State University (USA), University of Washington (USA), Los Alamos National Laboratory (USA), Tokyo Institute of Technology (Japan), National Central University (Taiwan), Indian Institute of Astrophysics (India), Indian Institute of Technology Bombay (India), Weizmann Institute of Science (Israel), The Oskar Klein Centre at Stockholm University (Sweden), Humboldt University (Germany), Liverpool John Moores University (UK) and University of Sydney (Australia).

E. C. K., A. S. C., and A. G. acknowledge support from the G.R.E.A.T research environment funded by *Vetenskapsrådet*, the Swedish Research Council, project number 2016-06012. E. C. K. also acknowledges support from The Wenner-Gren Foundations. M. W. C. acknowledges support from the National Science Foundation with grant number PHY-2010970. D. L. K. is supported by NSF grant AST-1816492.

We thank A. Miller for the star/galaxy classification code development for ZTF. This research has made use of the VizieR catalog access tool, CDS, Strasbourg, France (DOI: 10.26093/cds/vizieR). The original description of the VizieR service was published in A&AS 143, 23. This work has made use of data from the European Space Agency (ESA) mission *Gaia* (<https://www.cosmos.esa.int/gaia>), processed by the *Gaia* Data Processing and Analysis Consortium (DPAC, <https://www.cosmos.esa.int/web/gaia/dpac/consortium>). Funding for the DPAC has been provided by national institutions, in particular the institutions participating in the *Gaia* Multilateral Agreement.

REFERENCES

- Abbott, B., et al. 2017a, *Nature*, 551, 85
 —. 2017b, 118, 221101
 —. 2017c, *Phys. Rev. Lett.*, 119, 161101
 —. 2017d, *ApJL*, 848, L12
 Abbott, B. P., Abbott, R., Abbott, T. D., et al. 2019, *Physical Review X*, 9, 011001
 —. 2020, *ApJ*, 892, L3
 Ackley, K., Amati, L., Barbieri, C., et al. 2020, arXiv e-prints, arXiv:2002.01950
 Alard, C., & Lupton, R. H. 1998, *ApJ*, 503, 325
 Andreoni, I., Ackley, K., Cooke, J., et al. 2017, *PASA*, 34, e069
 Andreoni, I., Anand, S., Bianco, F. B., et al. 2019a, *PASP*, 131, 068004
 Andreoni, I., Goldstein, D. A., Anand, S., et al. 2019b, *ApJ*, 881, L16
 Andreoni, I., Goldstein, D. A., Kasliwal, M. M., et al. 2020a, *ApJ*, 890, 131
 Andreoni, I., Cooke, J., Webb, S., et al. 2020b, *MNRAS*, 491, 5852
 Antier, S., Agayeva, S., Almualla, M., et al. 2020, arXiv e-prints, arXiv:2004.04277
 Arcavi, I., et al. 2017, *Nature*, 551, 64
 Ascenzi, S., Coughlin, M. W., Dietrich, T., et al. 2019, *MNRAS*, 486, 672
 Barnes, J., & Kasen, D. 2013, *ApJ*, 775, 18
 Bellm, E. C., & Sesar, B. 2016, pyraf-dbsp: Reduction pipeline for the Palomar Double Beam Spectrograph, ascl:1602.002
 Bellm, E. C., Kulkarni, S. R., Barlow, T., et al. 2019a, *PASP*, 131, 068003

⁶ <https://www.postgresql.org/>

- Bellm, E. C., Kulkarni, S. R., Graham, M. J., et al. 2019b, *PASP*, 131, 018002
- Beniamini, P., Granot, J., & Gill, R. 2020, *MNRAS*, 493, 3521
- Beniamini, P., Petropoulou, M., Barniol Duran, R., & Giannios, D. 2019, *MNRAS*, 483, 840
- Berger, E. 2014, *Annual Review of Astronomy and Astrophysics*, 52, 43
- Berger, E., Fong, W., & Chornock, R. 2013, *ApJL*, 774, L23
- Bertin, E., & Arnouts, S. 2010, *SExtractor: Source Extractor*, *Astrophysics Source Code Library*, ascl:1010.064
- Bianco, F. B., Drout, M. R., Graham, M. L., et al. 2019, *PASP*, in press
- Blinnikov, S. I., Novikov, I. D., Perevodchikova, T. V., & Polnarev, A. G. 1984, *Soviet Astronomy Letters*, 10, 177
- Brescia, M., Cavuoti, S., & Longo, G. 2015, *MNRAS*, 450, 3893
- Bulla, M. 2019, *MNRAS*, 489, 5037
- Bulla, M., Covino, S., Kyutoku, K., et al. 2019, *Nature Astronomy*, 3, 99
- Caswell, T. A., Droettboom, M., Lee, A., et al. 2020, *matplotlib/matplotlib: REL: v3.2.2*, doi:10.5281/zenodo.3898017
- Cavuoti, S., Brescia, M., D'Abrusco, R., Longo, G., & Paolillo, M. 2014, *MNRAS*, 437, 968
- Chambers, K. C., Magnier, E. A., Metcalfe, N., et al. 2016, *arXiv e-prints*, arXiv:1612.05560
- Chornock, R., Berger, E., Kasen, D., et al. 2017, *ApJ*, 848, L19
- Chruslinska, M., Belczynski, K., Klencki, J., & Benacquista, M. 2018, *MNRAS*, 474, 2937
- Cook, D. O., Kasliwal, M. M., Van Sistine, A., et al. 2017, *arXiv e-prints*, arXiv:1710.05016
- Coughlin, M. W., Dietrich, T., Margalit, B., & Metzger, B. D. 2019a, *MNRAS*, 489, L91
- Coughlin, M. W., Dietrich, T., Doctor, Z., et al. 2018, *MNRAS*, 480, 3871
- Coughlin, M. W., Ahumada, T., Anand, S., et al. 2019b, *ApJ*, 885, L19
- Coughlin, M. W., Dietrich, T., Heinzl, J., et al. 2020, *Physical Review Research*, 2, 022006
- Coulter, D. A., Foley, R. J., Kilpatrick, C. D., et al. 2017, *Science*, 358, 1556
- Coward, D. M., Howell, E. J., Piran, T., et al. 2012, *MNRAS*, 425, 2668
- Cowperthwaite, P. S., & Berger, E. 2015, *ApJ*, 814, 25
- Cowperthwaite, P. S., Berger, E., Villar, V. A., et al. 2017, *ApJ*, 848, L17
- Cowperthwaite, P. S., Berger, E., Rest, A., et al. 2018, *ApJ*, 858, 18
- Dálya, G., Galgóczi, G., Dobos, L., et al. 2018, *MNRAS*, 479, 2374
- D'Avanzo, P., Campana, S., Salafia, O. S., et al. 2018, *A&A*, 613, L1
- De, K., Kasliwal, M. M., Tzanidakis, A., et al. 2020, *arXiv e-prints*, arXiv:2004.09029
- Della Valle, M., Guetta, D., Cappellaro, E., et al. 2018, *MNRAS*, 481, 4355
- Dey, A., Schlegel, D. J., Lang, D., et al. 2019, *AJ*, 157, 168
- Díaz, M. C., Macri, L. M., Garcia Lambas, D., et al. 2017, *ApJ*, 848, L29
- Dichiara, S., Troja, E., O'Connor, B., et al. 2020, *MNRAS*, 492, 5011
- Dietrich, T., Coughlin, M. W., Pang, P. T. H., et al. 2020, *arXiv e-prints*, arXiv:2002.11355
- Doctor, Z., Kessler, R., Chen, H. Y., et al. 2017, *ApJ*, 837, 57
- Drout, M. R., Piro, A. L., Shappee, B. J., et al. 2017, *Science*, 358, 1570
- Duev, D. A., Mahabal, A., Masci, F. J., et al. 2019, *MNRAS*, 489, 3582
- Eichler, D., Livio, M., Piran, T., & Schramm, D. N. 1989, *Nat*, 340, 126
- Evans, P. A., Cenko, S. B., Kennea, J. A., et al. 2017, *Science*, 358, 1565
- Feindt, U., Nordin, J., Rigault, M., et al. 2019, *J. Cosmology Astropart. Phys.*, 2019, 005
- Fong, W., & Berger, E. 2013, *ApJ*, 776, 18
- Fong, W., Berger, E., Margutti, R., & Zauderer, B. A. 2015, *The Astrophysical Journal*, 815, 102
- Foucart, F. 2012, *Phys. Rev.*, D86, 124007
- Fremling, C., Miller, A. A., Sharma, Y., et al. 2020, *ApJ*, 895, 32
- Frohmaier, C., Sullivan, M., Nugent, P. E., Goldstein, D. A., & DeRose, J. 2017, *ApJS*, 230, 4
- Gao, H., Ding, X., Wu, X.-F., Dai, Z.-G., & Zhang, B. 2015, *ApJ*, 807, 163
- Gehrels, N. 1986, *ApJ*, 303, 336
- Ghosh, S., Chatterjee, D., Kaplan, D. L., Brady, P. R., & Van Sistine, A. 2017, *PASP*, 129, 114503
- Goldstein, D. A., Andreoni, I., Nugent, P. E., et al. 2019, *ApJ*, 881, L7
- Gomez, S., Hosseinzadeh, G., Cowperthwaite, P. S., et al. 2019, *ApJ*, 884, L55
- Gompertz, B. P., Levan, A. J., Tanvir, N. R., et al. 2018, *ApJ*, 860, 62
- Gompertz, B. P., Cutter, R., Steeghs, D., et al. 2020, *MNRAS*, 497, 726

- Graham, M., Bellm, E., & et al. 2019, *PASP*, in press
- Hirata, K., Kajita, T., Koshihara, M., Nakahata, M., & Oyama, Y. 1987, *Physical Review Letters*, 58, 1490
- Ho, A. Y. Q., Perley, D. A., Kulkarni, S. R., et al. 2020a, *ApJ*, 895, 49
- Ho, A. Y. Q., Perley, D. A., Beniamini, P., et al. 2020b, arXiv e-prints, arXiv:2006.10761
- Holoien, T. W.-S., Brown, J. S., Stanek, K. Z., et al. 2017, *MNRAS*, 471, 4966
- Hosseinzadeh, G., Cowperthwaite, P. S., Gomez, S., et al. 2019, *ApJ*, 880, L4
- Hotokezaka, K., Kyutoku, K., Tanaka, M., et al. 2013, *ApJ*, 778, L16
- Hotokezaka, K., Nakar, E., Gottlieb, O., et al. 2019, *Nature Astronomy*, 3, 940
- IceCube Collaboration, Aartsen, M. G., Ackermann, M., et al. 2018, *Science*, 361, eaat1378
- Ivezić, Ž., Kahn, S. M., Tyson, J. A., et al. 2019, *ApJ*, 873, 111
- Jin, Z.-P., Covino, S., Liao, N.-H., et al. 2020, *Nature Astronomy*, 4, 77
- Jin, Z.-P., Li, X., Cano, Z., et al. 2015, *ApJ*, 811, L22
- Jin, Z.-P., Hotokezaka, K., Li, X., et al. 2016, *Nature Communications*, 7, 12898
- Jin, Z.-P., Li, X., Wang, H., et al. 2018, *ApJ*, 857, 128
- Kalogera, V., Kim, C., Lorimer, D. R., et al. 2004, *ApJ*, 614, L137
- Kasen, D., Metzger, B., Barnes, J., Quataert, E., & Ramirez-Ruiz, E. 2017, *Nature*, 551, 80
- Kasliwal, M. M., Nakar, E., Singer, L. P., et al. 2017, *Science*, 358, 1559
- Kasliwal, M. M., Kasen, D., Lau, R. M., et al. 2019, *MNRAS*, L14
- Kasliwal, M. M., Anand, S., Ahumada, T., et al. 2020, arXiv e-prints, arXiv:2006.11306
- Kawaguchi, K., Shibata, M., & Tanaka, M. 2018, *ApJ*, 865, L21
- Kim, C., Perera, B. B. P., & McLaughlin, M. A. 2015, *MNRAS*, 448, 928
- Kulkarni, S. R. 2005, *ArXiv Astrophysics e-prints*, astro-ph/0510256
- Lamb, G. P., Tanvir, N. R., Levan, A. J., et al. 2019, *ApJ*, 883, 48
- Li, L.-X., & Paczyński, B. 1998, *ApJ*, 507, L59
- Lundquist, M. J., Paterson, K., Fong, W., et al. 2019, *ApJ*, 881, L26
- Luri, X., Brown, A. G. A., Sarro, L. M., et al. 2018, *A&A*, 616, A9
- Margutti, R., Alexander, K. D., Xie, X., et al. 2018, *ApJ*, 856, L18
- Masci, F. J., Laher, R. R., Rusholme, B., et al. 2019, *PASP*, 131, 018003
- McBrien, O. R., Smartt, S. J., Huber, M. E., et al. 2020, arXiv e-prints, arXiv:2006.10442
- Metzger, B. D. 2019, *Living Reviews in Relativity*, 23, 1
- Metzger, B. D., & Berger, E. 2012, *ApJ*, 746, 48
- Metzger, B. D., Martínez-Pinedo, G., Darbha, S., et al. 2010, *MNRAS*, 406, 2650
- Miller, A. A., Kulkarni, M. K., Cao, Y., et al. 2017, *AJ*, 153, 73
- Nakar, E. 2019, arXiv e-prints, arXiv:1912.05659
- Narayan, R., Paczynski, B., & Piran, T. 1992, *ApJ*, 395, L83
- Oke, J. B., Cohen, J. G., Carr, M., et al. 1995, *PASP*, 107, 375
- Paczynski, B. 1986, *ApJ*, 308, L43
- pandas development team, T. 2020, pandas-dev/pandas: Pandas, doi:10.5281/zenodo.3509134
- Patterson, M. T., Bellm, E. C., Rusholme, B., et al. 2019, *PASP*, 131, 018001
- Perley, D. A. 2019, *PASP*, 131, 084503
- Perley, D. A., Metzger, B. D., Granot, J., et al. 2009, *ApJ*, 696, 1871
- Pian, E., D’Avanzo, P., Benetti, S., et al. 2017, *Nature*, 551, 67
- Planck Collaboration, Abergel, A., Ade, P. A. R., et al. 2014, *A&A*, 571, A11
- Planck Collaboration, Ade, P. A. R., Aghanim, N., et al. 2016, *A&A*, 594, A13
- Pol, N., McLaughlin, M., & Lorimer, D. R. 2019, *ApJ*, 870, 71
- . 2020, *Research Notes of the American Astronomical Society*, 4, 22
- Ricker, G. R., Winn, J. N., Vanderspek, R., et al. 2015, *Journal of Astronomical Telescopes, Instruments, and Systems*, 1, 014003
- Rigault, M. 2018, *ztfquery*, a python tool to access ZTF data, doi:10.5281/zenodo.1345222
- Rossi, A., Stratta, G., Maiorano, E., et al. 2020, *MNRAS*, 493, 3379
- Rosswog, S. 2005, *ApJ*, 634, 1202
- Rosswog, S., Sollerman, J., Feindt, U., et al. 2018, *A&A*, 615, A132
- Sagués Carracedo, A., Bulla, M., Feindt, U., & Goobar, A. 2020, arXiv e-prints, arXiv:2004.06137
- Salafia, O. S., & Giacomazzo, B. 2020, arXiv e-prints, arXiv:2006.07376
- Schady, P., Xu, D., Heintz, K. E., et al. 2019, *GRB Coordinates Network*, 23632, 1

- Schlegel, D. J., Finkbeiner, D. P., & Davis, M. 1998, *ApJ*, 500, 525
- Scolnic, D., Kessler, R., Brout, D., et al. 2018, *ApJ*, 852, L3
- Shappee, B. J., Prieto, J. L., Grupe, D., et al. 2014, *ApJ*, 788, 48
- Shappee, B. J., Simon, J. D., Drout, M. R., et al. 2017, *Science*, 358, 1574
- Siegel, D. M., Barnes, J., & Metzger, B. D. 2019, *Nature*, 569, 241
- Smartt, S. J., Eldridge, J. J., Crockett, R. M., & Maund, J. R. 2009, *MNRAS*, 395, 1409
- Smartt, S. J., Chen, T. W., Jerkstrand, A., et al. 2017, *Nature*, 551, 75
- Smartt, S. J., Chambers, K. C., Smith, K. W., et al. 2019, *Transient Name Server AstroNote*, 48, 1
- Sonbas, E., Barthelmy, S. D., Beardmore, A. P., et al. 2019, *GRB Coordinates Network*, 23615, 1
- Stachie, C., Coughlin, M. W., Christensen, N., & Muthukrishna, D. 2019, arXiv e-prints, arXiv:1912.06383
- Stein, R., van Velzen, S., Kowalski, M., et al. 2020, arXiv e-prints, arXiv:2005.05340
- Tanaka, M., & Hotokezaka, K. 2013, *ApJ*, 775, 113
- Tanvir, N. R., Levan, A. J., Fruchter, A. S., et al. 2013, *Nature*, 500, 547
- Tanvir, N. R., et al. 2017, *ApJ*, 848, L27
- The Astropy Collaboration. 2018, *astropy v3.0.5: a core python package for astronomy*, doi:10.5281/zenodo.2556700
- Troja, E., Piro, L., van Eerten, H., et al. 2017, *Nature*, 551, 71
- Troja, E., Ryan, G., Piro, L., et al. 2018, *Nature Communications*, 9, 4089
- Tutukov, A. V., & Yungelson, L. R. 1993, *MNRAS*, 260, 675
- Utsumi, Y., Tanaka, M., Tominaga, N., et al. 2017, *Publications of the Astronomical Society of Japan*, 69, 101
- Valenti, S., David, Sand, J., et al. 2017, *ApJ*, 848, L24
- van Eerten, H., Zhang, W., & MacFadyen, A. 2010, *ApJ*, 722, 235
- van Roestel, J., Groot, P. J., Kupfer, T., et al. 2019, *MNRAS*, 484, 4507
- Vieira, N., Ruan, J. J., Haggard, D., et al. 2020, arXiv e-prints, arXiv:2003.09437
- Watson, A. M., Butler, N. R., Lee, W. H., et al. 2020, *MNRAS*, 492, 5916
- Yang, B., Jin, Z.-P., Li, X., et al. 2015, *Nature Communications*, 6, 7323
- Yang, S., Valenti, S., Cappellaro, E., et al. 2017, *ApJ*, 851, L48
- Yao, Y., Miller, A. A., Kulkarni, S. R., et al. 2019, *ApJ*, 886, 152
- Yurkov, V., Gabovich, A., Sergienko, Y., et al. 2019, *GRB Coordinates Network*, 23614, 1
- Zackay, B., Ofek, E. O., & Gal-Yam, A. 2016, *ApJ*, 830, 27

APPENDIX

A. KILONOVA CANDIDATES *POST-MORTEM*

We discuss here individual candidates. The main features that we consider are 1) variable catalogs cross-matches; 2) possible CLU galaxy cross-match, or presence of a bright nearby galaxy; 3) past variability in survey data other than ZTF; 4) color evolution.

- ZTF18aazjzed – Reported to Transient Name Server (TNS) as AT2018ltl, it was catalogued as a cataclysmic variable. There are no PS1 pre-detections, but a faint source is visible in the ZTF reference image and there are recent ZTF detections (after the end date of the experiment). In addition, the color evolution is incompatible with KN models (Figure 4).
- ZTF19abzwbxy – The transient is located 86.5 kpc from a CLU galaxy 67.2 Mpc away. However, it is coincident with a faint source present in the PS1 catalog, making an association with the CLU galaxy unlikely. In addition, the source is catalogued as variable in the AAVSO International Variable Star Index, possibly being a quasi-stellar object (QSO; [Brescia et al. 2015](#)).
- ZTF18achqdzh – Nuclear source located in a galaxy with spectroscopic redshift $z = 0.0461$, so at peak the transient is at $M_r < -17$, probably too bright to be a KN ([Kasliwal et al. 2020](#)). The host was classified as a low-ionization nuclear emission-line region (LINER) and can harbor an AGN ([Cavuoti et al. 2014](#)). Sporadic faint detections in ZTF forced photometry suggest the emission to be due to nuclear variability.
- ZTF20aaouvjn – Reported to TNS as AT2020lru. Located 76.2 kpc ($388''$) from a galaxy 40.5 Mpc away. About $2.5''$ from a star, most likely to be the source if it has large proper motion. No other sources are present nearby and there are no PS1 pre-detections. The color evolution is incompatible with KN models (Figure 4).
- ZTF19abqtcob – Reported to TNS as AT2019aadh, it is located 55 kpc ($1313''$) from a CLU galaxy 8.6 Mpc away. If the host is indeed the nearby CLU galaxy, this would imply an absolute magnitude of $M \sim -10$ at peak, consistent with a classical nova. The low Galactic latitude of $b_{\text{gal}} = -10.0$, and the lack of any other possible host nearby make it likely for ZTF19abqtcob to be a foreground Galactic CV.
- ZTF18abyzkeq – Hostless source with no PS1 pre-detections, ZTF18abyzkeq is classified as a variable star in the AAVSO International Variable Star Index. As expected, the color evolution is incompatible with KN models (Figure 4).
- ZTF19aayhxlo – Reported to TNS as AT2019aada, ZTF19aayhxlo appears to be a hostless source with no PS1 pre-detections. The color evolution is incompatible with KN models (Figure 4). Recent ZTF detections (after the end date of the experiment) suggests the source to be a variable object.
- ZTF19acecsfi – Faint PS1 and SDSS pre-detection within $1''$. Deep Legacy Survey images suggest the presence of an underlying blue source deemed as stellar in Legacy Survey DR8 catalog ([Dey et al. 2019](#)). Despite the high Galactic latitude $b_{\text{gal}} = 30.3$, we consider the source to be likely a CV.
- ZTF19aabgebm – Reported to TNS as AT2019aacx, ZTF19aabgebm is the (already known) optical afterglow of long GRB 190106A ([Sonbas et al. 2019](#); [Yurkov et al. 2019](#)) at redshift $z = 1.859$ ([Schady et al. 2019](#)). We note that its color and color evolution are barely compatible with KN models for NSBH mergers (Figure 4)
- ZTF20aahcrjn – Reported to TNS as AT2020atp. A faint source is present at the candidate location in the ZTF reference image. There are no PS1 pre-detections, but forced photometry revealed another possible outburst in April 2018, suggesting this to be a Galactic variable. Moreover, the color evolution is incompatible with KN models (Figure 4).
- ZTF18abuzpri – Reported to TNS as AT2018ltn. A prominent source is present in the ZTF images, likely constituted of 2 stars (Legacy Survey DR8). Although there is no activity recorded in the PS1 catalog, the likely stellarity and the significantly blue color $g - r = -0.73 \pm 0.18$ makes it unlikely for ZTF18abuzpri to be a KN.

- ZTF19abqiwjq – Reported to TNS as AT2019aade, it is located in a crowded field at low Galactic latitude $b_{Gal} = -5.9$ deg. A faint source is present in the reference image at the location of the candidate. PS1 detected this source multiple times in different filters and the flux in these detections has increased significantly (more than 8 times), indicating past activity. We therefore rule out ZTF19abqiwjq as a KN candidate.
- ZTF19abqneae – Reported to TNS as AT2019aadd, it is located in a crowded stellar field at $b_{Gal} = -11.1$ deg. The candidate has multiple PS1 detections on different filters and the flux in these detections has doubled, showing activity in the past.
- ZTF19acbthtv – Reported to TNS as AT2019aacw. Hostless source, however PS1 pre-detections are present within $2''$ and recent additional ZTF detections after the nominal end of the experiment, indicating repeated activity. Moreover, the color evolution is incompatible with KN models (Figure 4).
- ZTF19acszwgx – Previously reported to TNS by ATLAS team as AT2016hnn. An underlying faint source is visible in the ZTF reference image, with multiple PS1 detections within $1''$. The g -band PS1 flux varies 30% thus it was active in the past and a possible re-brightening could be detected in recent ZTF data.
- ZTF19abcputm – Reported to TNS as AT2019aacy. A faint source is present in the ZTF reference image, and it has multiple PS1 detection within $1''$. The r -band PS1 flux varies 300% thus it was active in the past.
- ZTF19abogdfr – Reported to TNS as AT2019aacz, the source shows multiple PS1 detections within $1''$. The g -band PS1 flux varies by a factor of 80, thus it was active in the past.
- ZTF19aapbbde – The source shows an underlying blue point-like source. ZTF19aapbbde has numerous PS1 detections within $1''$, with flux measurements suggesting $\sim 50\%$ increase in its brightness. This is greater than what would be expected within the PSF flux $3\text{-}\sigma$ error, suggesting previous activity. The source shows dramatic reddening at a 3-4 days phase, which is incompatible with the expectations from KN models (Figure 4).
- ZTF19abcpiag – Previously reported by the Gaia team to TNS as AT2017dff, this source is a catalogued variable star listed in the AAVSO International Variable Star Index. The transient presents an extremely rapid r -band light curve, but no color information is available.
- ZTF18acfmhrt – Reported to TNS as AT2018ltm, the source appears to be hostless with no pre-detections in PS1. An underlying faint blue source is visible in PS1 images. The color evolution is incompatible with KN models (Figure 4).
- ZTF19abxwwmr – Hostless and with no PS1 pre-detections. However, the color evolution is incompatible with KN models (Figure 4).
- ZTF19aanhtzz – Reported to TNS as AT2019aacu. The nearest source is $3.5''$ away and it is probably stellar (SDSS, Legacy Survey DR8). This source presents a number of interesting features, including red color, rapid evolution, and high Galactic latitude of $b_{gal} = 59.2$ deg. The lack of an apparent host galaxy suggests the source to be either a luminous cosmological transient (the afterglow of a GRB that went undetected by gamma-ray telescopes?) or some type of Galactic variable, rather than a kilonova. However, the red color disfavors the Galactic scenario and a conclusive answer regarding the nature of ZTF19aanhtzz/AT2019aacu is yet to be found.
- ZTF19abudvoz – Previously reported to TNS by the ATLAS team as AT2016ayj in 2016. Apparently orphan, it has two PS1 pre-detections within $1''$. In addition, the light curve is also unlike what is expected for KNe, with no color evolution during the rise time and with a g -band decay of $\sim 1 \text{ mag day}^{-1}$.
- ZTF18acsqjd – The source shows pre-activity in PS1 images and therefore we exclude that it can be a KN.

B. CANDIDATES FADING RATES

Here we present the fading rates (mag per day) for the candidates that passed our selection criteria and quality checks. Specifically, we show for each band the index obtained by performing a linear fit from the brightest points light curves built with alerts, forced photometry, and nightly stacked forced photometry.

Name	α_g	α_r	α_i	forced α_g	forced α_r	forced α_i	stack α_g	stack α_r	stack α_i
ZTF18aazjzed	1.30	1.29	nan	1.29	1.27	nan	nan	nan	nan
ZTF19abzwbxy	0.82	nan	nan	0.82	nan	nan	0.82	nan	nan
ZTF18achqdzh	nan	nan	nan	nan	0.51	nan	nan	nan	nan
ZTF20aaouvjn	nan	nan	nan	nan	nan	nan	1.49	1.74	nan
ZTF19abqtcob	nan	0.39	nan	nan	0.43	nan	nan	nan	nan
ZTF18abyzkeq	0.85	0.45	nan	1.29	0.43	nan	nan	0.43	nan
ZTF19aayhxlo	nan	nan	nan	1.00	0.97	nan	1.00	nan	nan
ZTF19acecsfi	0.98	nan	nan	1.03	nan	nan	1.04	nan	nan
ZTF19aabgebm	nan	nan	nan	1.24	1.23	nan	1.24	1.24	nan
ZTF20aahcrjn	0.85	0.66	nan	0.89	0.63	nan	0.89	0.63	nan
ZTF18abuzpri	nan	8.89	nan	nan	9.09	nan	nan	3.50	nan
ZTF19abqiwjq	nan	nan	nan	nan	0.86	nan	nan	0.85	nan
ZTF19abqneae	nan	nan	nan	nan	1.10	nan	nan	1.05	nan
ZTF19acbtthv	1.44	1.52	nan	1.47	1.51	nan	1.48	1.51	nan
ZTF19acszwgx	nan	0.52	nan	nan	0.52	nan	nan	0.53	nan
ZTF19abcputm	nan	0.87	nan	nan	0.86	nan	nan	0.86	nan
ZTF19abogdfr	nan	0.63	nan	nan	0.62	nan	nan	0.64	nan
ZTF19aapbbde	1.11	0.50	nan	1.18	0.40	nan	1.18	0.41	nan
ZTF19abcpiag	nan	nan	nan	nan	1.14	nan	nan	1.23	nan
ZTF18acfmhrt	1.00	nan	nan	0.96	1.26	nan	0.96	1.26	nan
ZTF19abxwwmr	nan	nan	nan	0.89	1.05	nan	0.87	1.06	nan
ZTF19aanhtzz	nan	nan	nan	nan	1.25	nan	nan	nan	nan
ZTF19abudvoz	nan	nan	nan	0.91	nan	nan	nan	nan	nan
ZTF18acsjqjd	nan	0.42	nan	nan	0.42	nan	nan	nan	nan

C. KILONOVA RATE GRID FOR TOP-HAT MODELS

M	R (n=1) [Gpc ⁻³ yr ⁻¹]	R (n=2) [Gpc ⁻³ yr ⁻¹]	R (n=3) [Gpc ⁻³ yr ⁻¹]
-17.0	125.0	266.0	323.0
-16.5	229.0	563.0	705.0
-16.0	404.0	949.0	1162.0
-15.5	1041.0	2238.0	2586.0
-15.0	1595.0	3488.0	4285.0
-14.5	2830.0	6521.0	7500.0
-14.0	8571.0	NaN	NaN
-13.5	10000.0	NaN	NaN
-13.0	15000.0	15000.0	15000.0
-12.5	NaN	NaN	NaN
-12.0	NaN	NaN	NaN

D. KILONOVA RATE GRID FOR LINEAR DECAY MODELS

The following table presents results for a grid of linear decay models used to inject synthetic light curves in `simsurvey`. The columns correspond to the starting absolute magnitude, the decay rate, and the rates corresponding to 1, 2, 3 detections (5σ) in ZTF at 95% confidence.

M	α [mag day ⁻¹]	R (n=1) [Gpc ⁻³ yr ⁻¹]	R (n=2) [Gpc ⁻³ yr ⁻¹]	R (n=3) [Gpc ⁻³ yr ⁻¹]
-17.5	0.3	82	141	184
-17.5	0.4	85	173	226
-17.5	0.5	99	200	251
-17.5	0.6	112	242	335
-17.5	0.7	140	306	379
-17.5	0.8	138	314	413
-17.5	0.9	135	340	447
-17.5	1.0	163	500	674
-17.5	1.1	181	545	714
-17.5	1.2	168	540	689
-17.5	1.3	187	594	789
-17.5	1.4	200	674	983
-17.5	1.5	205	750	967
-17.0	0.3	154	288	377
-17.0	0.4	179	335	444
-17.0	0.5	173	363	465
-17.0	0.6	232	535	697
-17.0	0.7	250	600	895
-17.0	0.8	272	722	967
-17.0	0.9	287	740	1016
-17.0	1.0	317	895	1395
-17.0	1.1	315	1016	1276
-17.0	1.2	344	1250	1874
-17.0	1.3	375	1333	1666
-17.0	1.4	382	1250	1666
-17.0	1.5	441	1764	2500

-16.5	0.3	304	508	645
-16.5	0.4	408	800	1090
-16.5	0.5	422	740	1052
-16.5	0.6	397	952	1132
-16.5	0.7	447	937	1363
-16.5	0.8	545	1463	1874
-16.5	0.9	576	1428	1874
-16.5	1.0	550	1764	2142
-16.5	1.1	530	1621	2000
-16.5	1.2	666	2142	2500
-16.5	1.3	594	2000	2857
-16.5	1.4	759	2727	4000
-16.5	1.5	789	2500	3333
-16.0	0.3	504	857	1071
-16.0	0.4	779	1304	1874
-16.0	0.5	645	1395	2000
-16.0	0.6	833	1500	2068
-16.0	0.7	789	1935	3333
-16.0	0.8	1395	3000	4285
-16.0	0.9	983	2400	3157
-16.0	1.0	1276	5000	6666
-16.0	1.1	1428	4285	5000
-16.0	1.2	1395	4615	6000
-16.0	1.3	1304	5000	6000
-16.0	1.4	1304	3333	4000
-16.0	1.5	1304	5000	6000
-15.5	0.3	1276	2222	3000
-15.5	0.4	1200	2500	3333
-15.5	0.5	1935	5000	5454
-15.5	0.6	1935	5454	6666
-15.5	0.7	2000	5000	6000
-15.5	0.8	2222	5000	5454
-15.5	0.9	2400	6666	10000
-15.5	1.0	1764	8571	12000
-15.5	1.1	2142	5000	7500
-15.5	1.2	2727	12000	15000
-15.5	1.3	3750	nan	nan
-15.5	1.4	4615	20000	nan
-15.5	1.5	6000	nan	nan
-15.0	0.3	3333	7500	12000
-15.0	0.4	2222	4285	4615
-15.0	0.5	3000	5000	5454
-15.0	0.6	2222	5000	6666
-15.0	0.7	2142	4615	5000
-15.0	0.8	4285	12000	12000
-15.0	0.9	5454	20000	20000
-15.0	1.0	3000	10000	nan
-15.0	1.1	4615	10000	12000
-15.0	1.2	3750	12000	15000
-15.0	1.3	3750	15000	20000

-15.0	1.4	7500	nan	nan
-15.0	1.5	10000	10000	nan
-14.5	0.3	5000	6000	6000
-14.5	0.4	5454	10000	10000
-14.5	0.5	4285	10000	12000
-14.5	0.6	7500	15000	20000
-14.5	0.7	8571	15000	15000
-14.5	0.8	7500	15000	15000
-14.5	0.9	15000	20000	nan
-14.5	1.0	8571	nan	nan
-14.5	1.1	10000	nan	nan
-14.5	1.2	8571	15000	15000
-14.5	1.3	7500	nan	nan
-14.5	1.4	15000	nan	nan
-14.5	1.5	10000	10000	10000

E. KILONOVA RATE FOR BEST-FIT MODEL AT2017GFO

viewing angle [deg]	R (n=1) [Gpc ⁻³ yr ⁻¹]	R (n=2) [Gpc ⁻³ yr ⁻¹]	R (n=3) [Gpc ⁻³ yr ⁻¹]
fixed 20°	613	1775	2400
uniform distribution in cosine	1273	4029	5510

F. KILONOVA RATE EJECTA MASS BNS GRID

m_{dyn} [M _⊙]	m_{win} [M _⊙]	R (n=1) [Gpc ⁻³ yr ⁻¹]	R (n=2) [Gpc ⁻³ yr ⁻¹]	R (n=3) [Gpc ⁻³ yr ⁻¹]
0.001	0.01	5000	12000	14117
0.001	0.03	2876	6562	9545
0.001	0.05	2142	5384	8076
0.001	0.07	1500	2957	4117
0.001	0.09	1478	3230	4200
0.001	0.11	1354	2727	3620
0.001	0.13	1272	3230	4772
0.005	0.01	2000	6000	11250
0.005	0.03	1153	3396	4390
0.005	0.05	845	2278	3050
0.005	0.07	711	1800	2368
0.005	0.09	666	1636	2222
0.005	0.11	538	1304	1682
0.005	0.13	517	1200	1636
0.010	0.01	1440	4090	6428
0.010	0.03	694	2000	2535
0.010	0.05	520	1538	2117
0.010	0.07	491	1525	1978
0.010	0.09	377	913	1276
0.010	0.11	378	957	1267
0.010	0.13	349	829	1132

0.020	0.01	1052	3103	3750
0.020	0.03	590	2168	3333
0.020	0.05	396	1129	1500
0.020	0.07	331	871	1250
0.020	0.09	269	711	1004
0.020	0.11	253	666	878
0.020	0.13	228	623	850

G. KILONOVA RATE EJECTA MASS NSBH GRID

m_{dyn}	m_{win}	R (n=1)	R (n=2)	R (n=3)
[M_{\odot}]	[M_{\odot}]	[$\text{Gpc}^{-3} \text{yr}^{-1}$]	[$\text{Gpc}^{-3} \text{yr}^{-1}$]	[$\text{Gpc}^{-3} \text{yr}^{-1}$]
0.01	0.01	4384	11632	16285
0.01	0.02	3677	10555	14250
0.01	0.03	2226	5229	6867
0.01	0.04	2244	5876	8028
0.01	0.05	1821	4318	6195
0.01	0.06	1701	4318	5700
0.01	0.07	1503	3986	5000
0.01	0.08	1393	3220	4710
0.01	0.09	1212	2968	4285
0.02	0.01	3617	7846	10625
0.02	0.02	3128	8225	12439
0.02	0.03	2628	5862	7968
0.02	0.04	2056	4358	5730
0.02	0.05	1984	4473	6071
0.02	0.06	1634	3445	5257
0.02	0.07	1522	3669	5257
0.02	0.08	1370	2982	4080
0.02	0.09	1338	2931	4047
0.03	0.01	3355	9107	10625
0.03	0.02	2524	6219	8360
0.03	0.03	2383	5543	7727
0.03	0.04	2286	4766	6710
0.03	0.05	2023	4766	6144
0.03	0.06	1634	3333	4678
0.03	0.07	1522	3493	4636
0.03	0.08	1370	3072	4080
0.03	0.09	1256	2698	3617
0.04	0.01	2756	6000	7083
0.04	0.02	2428	5730	8095
0.04	0.03	2116	4146	5604
0.04	0.04	2207	4473	6800
0.04	0.05	2073	4553	6986
0.04	0.06	1694	3445	4811
0.04	0.07	1432	2897	3750
0.04	0.08	1495	3128	4722
0.04	0.09	1404	2771	4080
0.05	0.01	2451	4594	5862
0.05	0.02	2512	4766	6623

0.05	0.03	2081	4473	6538
0.05	0.04	2073	4146	5730
0.05	0.05	1969	3566	5151
0.05	0.06	1578	3333	4636
0.05	0.07	1495	2897	3805
0.05	0.08	1378	2475	3566
0.05	0.09	1297	2500	3227
0.06	0.01	2550	5151	7083
0.06	0.02	2256	4636	5862
0.06	0.03	2417	5368	7727
0.06	0.04	2000	3692	5052
0.06	0.05	1951	3749	5393
0.06	0.06	1454	2637	3692
0.06	0.07	1618	3191	4166
0.06	0.08	1496	2984	4042
0.06	0.09	1289	2467	3114
0.07	0.01	2368	5113	6428
0.07	0.02	2132	4054	5696
0.07	0.03	2261	5294	7031
0.07	0.04	1867	3629	5113
0.07	0.05	1679	3284	4368
0.07	0.06	1704	3600	5232
0.07	0.07	1685	3191	4205
0.07	0.08	1535	3169	4245
0.07	0.09	1319	2777	3719
0.08	0.01	1867	3879	5921
0.08	0.02	2083	4205	5921
0.08	0.03	2031	3939	6724
0.08	0.04	1788	4239	6190
0.08	0.05	1751	3453	4615
0.08	0.06	1777	3404	4485
0.08	0.07	1384	2472	3169
0.08	0.08	1465	2760	3750
0.08	0.09	1235	2346	3360
0.09	0.01	1925	3564	4615
0.09	0.02	1925	4235	6000
0.09	0.03	1836	3600	4337
0.09	0.04	2130	4615	6206
0.09	0.05	1825	3692	5217
0.09	0.06	1685	3082	3982
0.09	0.07	1555	3134	4285
0.09	0.08	1390	2709	3925
0.09	0.09	1220	2320	3157
